

# LUXURY



"Artisans since 1982 – Handmade Art"



TIMELESS  
HANDMADE  
DESIGN

# THE BRAND

HANDMADE EXCELLENCE  
FROM COLOMBIA.  
CREATED FOR THE WORLD.



## Brand Essence

LUJANA is evolving tradition.

A Colombian workshop with a designer's soul and artisan hands, where every piece tells a story of craft, detail, and beauty.

We create with intention, produce with excellence, and partner with brands that value authenticity.



**ABOUT  
AS**

**MODERN  
ARTWORK  
DESIGN**



Since 1982, LUJANA has been a Colombian workshop dedicated to creating handcrafted pieces for the fashion industry. We blend tradition with contemporary design to develop components, accessories, and one-of-a-kind items made by hand with high quality standards.

For over 40 years, we've collaborated with both national and international brands, including Marni (Italy), bringing artisanal sensibility and tailored production to their collections.

Today, LUJANA stands for experience, attention to detail, and a deep commitment to handmade craftsmanship.

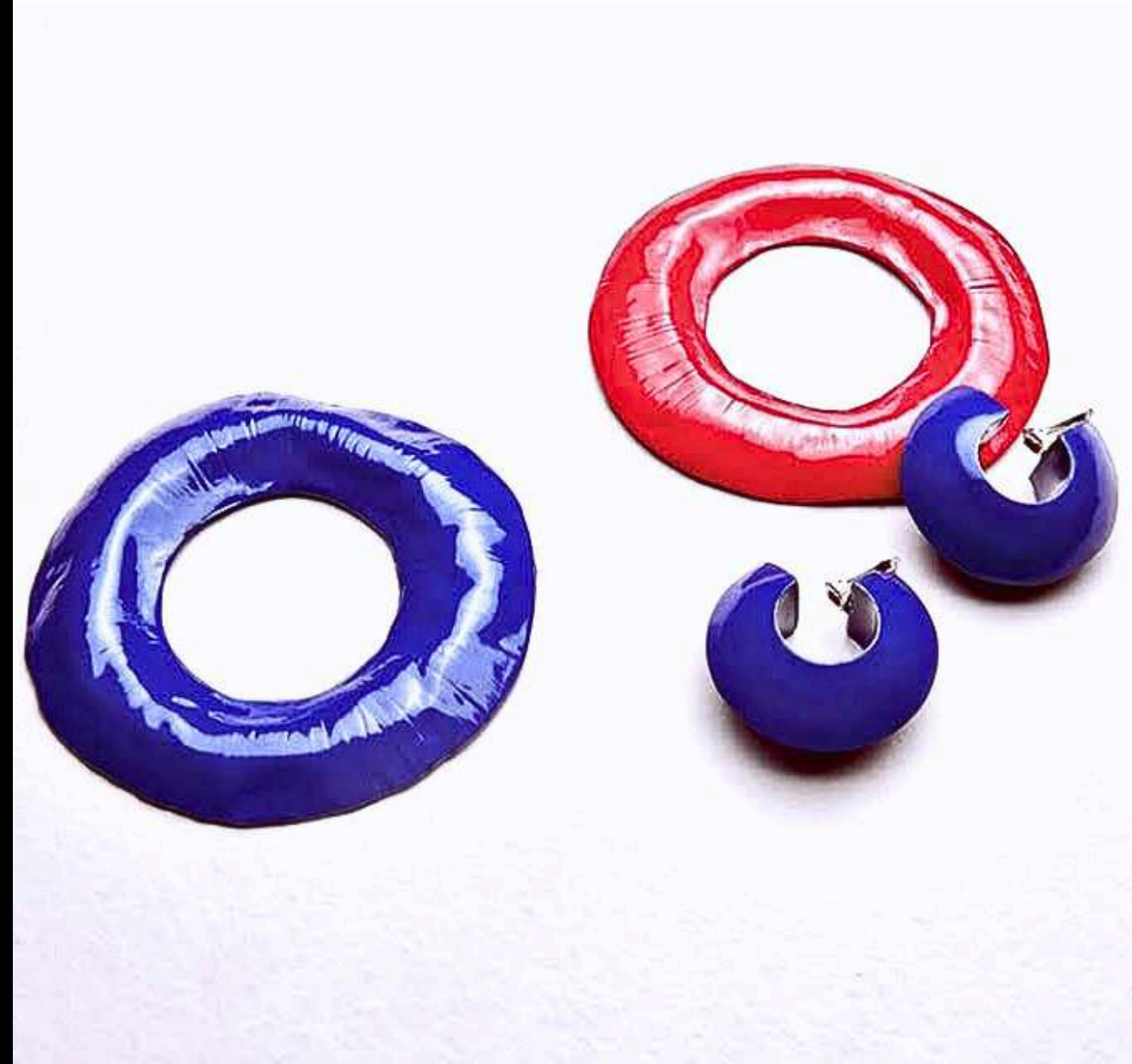




# OUR MISSION

"THE SOUL OF CRAFT,  
SERVING DESIGN."

To create high-quality handcrafted pieces that blend tradition, design, and purpose — supporting fashion brands that value detail, craftsmanship, and authenticity. We are a strategic partner in the development of collections with a unique identity.





## OUR VISION



### VISION FOR THE FUTURE

To be globally recognized as Colombia's leading artisanal workshop for luxury fashion brands seeking responsible production, soulful design, and handmade excellence.

Our past collaboration with renowned houses such as Marni (Italy) inspires us to continue partnering with brands that value authenticity, innovation, and craftsmanship.

"Connecting Colombian tradition with global runways."

**"LUXURY ARTISANAL EXCELLENCE"**

# WHAT WE OFFER



## Artisanal, sustainable services and specialized production

At **LUJANA**, we provide flexible, high-quality solutions for fashion brands seeking soulful craftsmanship and environmental commitment.

Our workshop blends traditional techniques with innovative materials, allowing for the creation of unique and responsible products.

### ◆ Our services include:

- Handcrafted accessory manufacturing (earrings, necklaces, pins, hardware)
- Design and development of exclusive components using materials such as:
  - Natural bovine horn
  - Hand-shaped resin
  - Semi-precious stones
  - Cast and hand-hammered metals (zamak, bronze)
  - Molded plastics and recovered/recycled materials
- Eco-conscious production with sustainable inputs upon request
- We work with any material provided or proposed by the client
- Special finishes: antique, patina, gold plating, hand-hammered textures
- Export-ready logistics with reliable delivery





STONE, RESIN, AND GOLD-PLATED BRONZE.



STONE, RESIN, AND GOLD-PLATED BRONZE



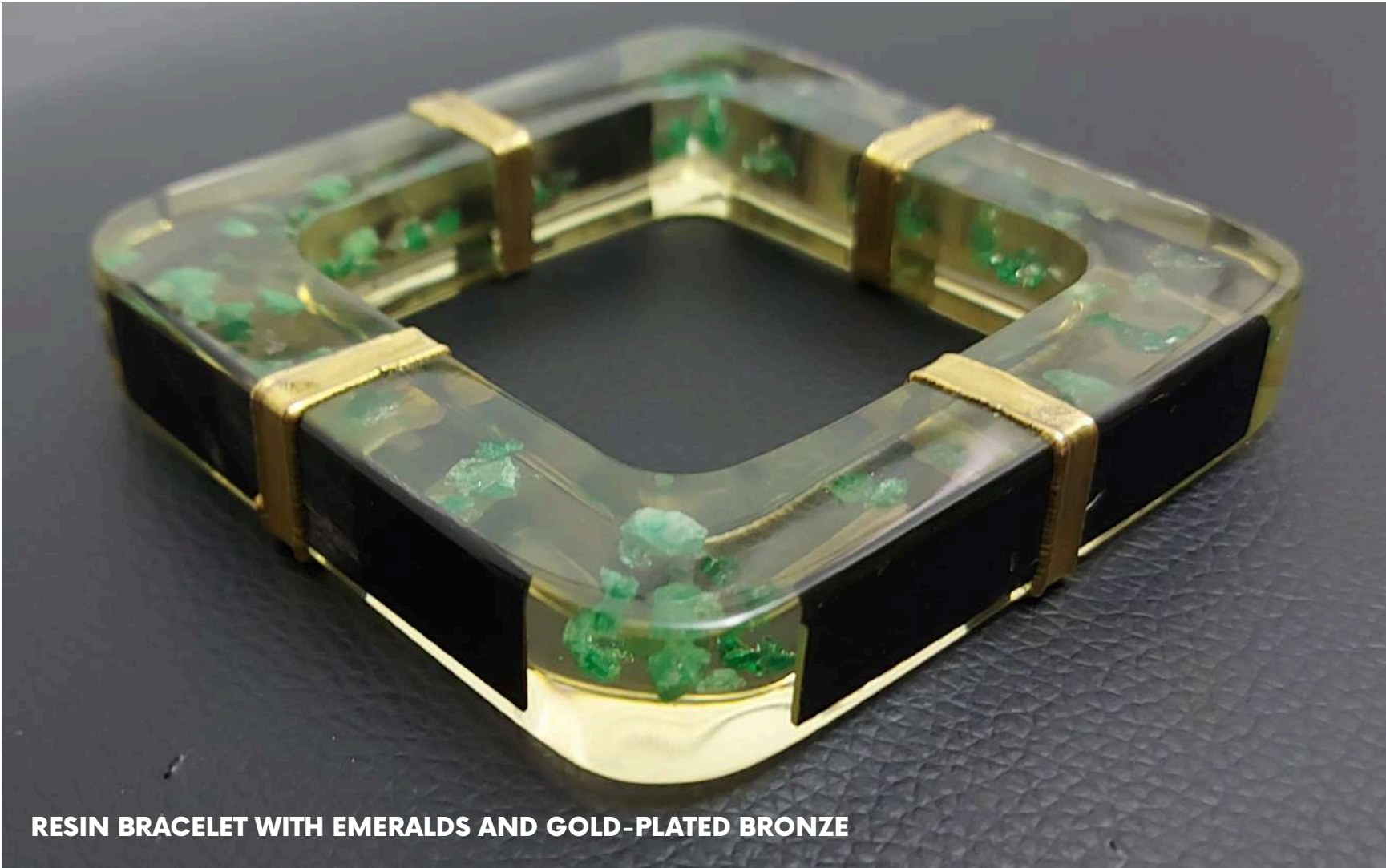
MIYUKI BEADED ORCHID EARRINGS



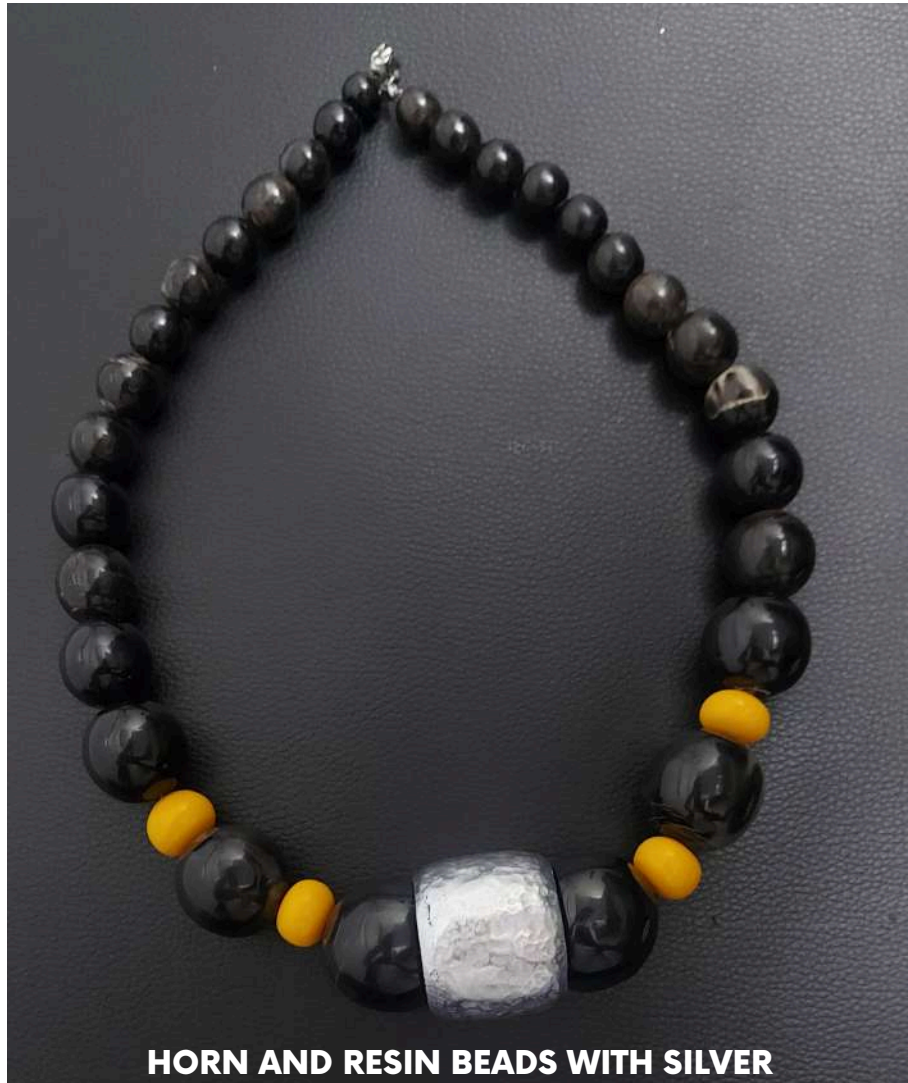
MIYUKI BEADED EARRINGS

# COLLECTION

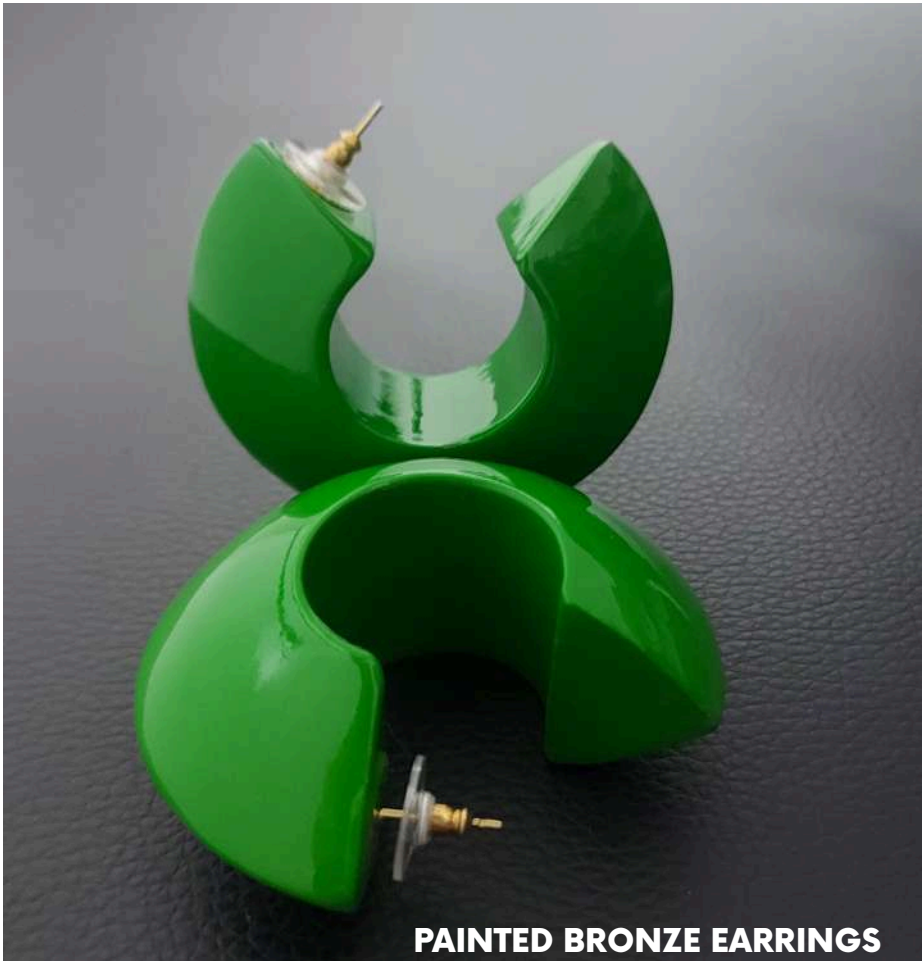
"100% HANDMADE IN COLOMBIA — CRAFTED WITH SOUL, SKILL, AND TRADITION."



RESIN BRACELET WITH EMERALDS AND GOLD-PLATED BRONZE



HORN AND RESIN BEADS WITH SILVER



PAINTED BRONZE EARRINGS



FORMA 2

fronte

retro

lato

prospettiva

2,1 cm

1 cm

Colori:

- biondo

- nero

- pantone 195917 sycamore

- pantone 191629 ruby wine

- pantone 194027 estate blue

FORMA 3

fronte

retro

lato

prospettiva

2,7 cm

1,4 cm

Colori:

- biondo

- nero

- pantone 195917 sycamore

- pantone 191629 ruby wine

- pantone 194027 estate blue

FORMA 4

fronte

retro

lato

prospettiva

3,3 cm

1,2 cm

Colori:

- biondo

- nero

- pantone 195917 sycamore

- pantone 191629 ruby wine

- pantone 194027 estate blue

I BORDI IN ALTO DELLE FOGLIE DEVONO ESSERE BEN LIMATI, NON COME I NOSTRI CAMPIONI

bordes arriba de las hojas

Ellos están bien presentadas , no como nuestros campeones

pag 8a

VARIANTE COLORE

ART. **BJ**

FOGLIA CORNO GRANDE SENZA FORO

(da realizzare come il campionario)

FORNITORE **LUJANA**

COD. ART. FORNITORE

LISTINO MARNI

LISTINO FORNITORE

fronte

retro

spessore como como desarollo entre 1,2-1,5mm

69 MM

61 MM

COL 00W19 CUERNO CLARO (como hecho por desarollo)

COL 00R66 CUERNO ROJO (como hecho por desarollo)

COL 00V60 CUERNO VERDE (como hecho por desarollo)

STAGIONE: E18

PROGETTO: pag 4b

NOME: COMPONENTE IN RESINA SEMITRASPARENTE

PACKETTO/LINEA: ART. FORNITORE: COD.ART. FORNITORE: LISTINO MARNI: LISTINO FORNITORE: PROTOTIPO CAMPIONE

COLORI/QUANTITA DA ORDINARE:

Realizzare un prototipo in resina semitrasparente, come il campione in foto. La base è in corno biondo spessore 5 mm. L'altezza totale è 1,2 cm

QUANTITA': 10 pezzi x colore

fronte

lato

due fori passanti da 2 mm

4,5 cm

4 cm

1,2 cm

2,5 cm

1 fori devono essere fatti nella parte in corno biondo non sulla resina!

RIFERIMENTO COLORI: vedi pezzi fisici inviati

colore 1

colore 2

colore 3

colore 4

\*valido solo x colore

Proyecto 9

VISTA SUPERIOR

VISTA LATERAL

1,9 cm

0,7 mm

Agujero 3 mm

OPCIONES DE COLOR

Fablicar 20 piezas de cuerno natural

Fablicar 20 piezas de cuerno negro

FABRICAR 20 PIEZAS DE CUERNO COLOR NATURAL + 20 PIEZAS DE CUERNO COLOR NEGRO

LOS COMPONENTES DEBEN TENER LAS MISMAS MEDIDAS DE LA MUESTRA( 1,7X 3,1X2,2 CM).

REALIZAR UN AGUERO DE 3 MM PARA PERMITIR EL PASO DEL ALAMBRE METALICO.

# ACCESSORY COMPONENTS COLLECTION

ALL OF OUR COMPONENTS AND PRODUCT DEVELOPMENTS ARE ENTIRELY HANDCRAFTED.

FORMA 2

fronte

retro

lato

47 mm

27 mm

10 mm

base en cuerno rubio de 3 mm

FORMA 3

fronte

retro

lato

63 mm

25 mm

10 mm

base en cuerno rubio de 3 mm

pag 7a

VARIANTE COLORE

ART. **B**

CUBO RETTANGOLARE CON FORO 14x14 MM

EL HUECO DEBE SER PASANTE DIAMETRO 2 MM

FORNITORE **LUJANA**

COD. ART. FORNITORE

LISTINO MARNI

LISTINO FORNITORE

43 MM

14 MM

14 MM

spessore

ATENCION : LA PIEZA DEBE SER HECHA EN UN UNICA FORMA DE CUERNO SIN PEGAMENTO!

COL 00W19 CUERNO CLARO NO TRASPARENTE NO QUEREMOS VER EL HUECO PASANTE

COL 00N99 CUERNO NERO

Por la referencia de estos colores mira la carta colores cuerno:

COL00B80 CUERNO BLU

COL00V60 CUERNO VERDE

COL 00R66 CUERNO ROJO

FRONTALE

LATERALE

FORMA 3

50 mm

45 mm

Quantità:

- 10 pz. con foro passante per ciascun colore

- 5 pz. con foro a croce per ciascun colore

- 3 pz. senza foro per ciascun colore

FORMA 4

50 mm

10 mm

28 mm

16 mm

45 mm

Quantità:

- 3 pz. con foro passante per ciascun colore

- 6 pz. senza foro per ciascun colore

FRONTALE

LATERALE

FORMA 7

20 mm

50 mm

37 mm

Quantità:

- 4 pz. con foro passante per ciascun colore

- 4 pz. senza foro per ciascun colore

COLORI:

FORMA 1 - Nero - Asparagus Green 120311 - Hunter Green 195511

FORMA 2 - Asparagus Green 120311 - Transparent Yellow 110617 - Hunter Green 195511 - Mandarin Red 171562

FORMA 3 - Asparagus Green 120311 - Hunter Green 195511 - Mandarin Red 171562

FORMA 4 - a: Nero, b: Asparagus Green 120311 - c: Nero

a: Asparagus Green 120311, b: Transparent Yellow 110617, c: Asparagus Green 120311

FORMA 5 - Nero - Asparagus Green 120311 - Hunter Green 195511 - Transparent Yellow 110617

FORMA 6 - a: Asparagus Green 120311, b: Nero

a: Transparent Yellow 110617, b: Asparagus Green 120311

FORMA 7 - Nero - Asparagus Green 120311 - Transparent Yellow 110617

pag 4 D NUOVO

FORMA 2 fronte

FORMA 2 lato

foro diametro 2mm

110 mm

25 mm

6 mm

12 mm

ESEMPIO DI FORI AGLI ESTREMI

pag 6a





## **LUJANA Advantages:**

- 40+ years of artisanal experience
- Customizable production
- Material versatility
- Eco-conscious processes
- Reliable international logistics

**WHY CHOOSE US**  
**SIMPLEONE**








"LET'S COLLABORATE — CONTACT US TO SCHEDULE A CALL OR REQUEST MORE DETAILS."

## CONTACT US

### SOCIAL MEDIA

 @lujanajoyeria  
 lujana joyeria  
 lujana joyeria

Sud America  
Bogotá D.C., Colombia  
Cll 19A # 91-05  
 +57 316-226 1605  
 Lujanaexport@gmail.com