



2023 / 24

”

## WELCOME TO THE DYNAMIC ORGANIZATION OF CERAMIC WORLD.

Established in 2015, Neelson Group is an ISO 9001-2008 certified, reputed, and leading manufacturer & supplier of glazed porcelain tiles in India, with its headquarters located in the ceramic hub of India – Morbi.

Following the remarkable success of Neelson Ceramic in a very short time, we set up our second plant – Neelson Porselano in 2019 to accelerate our production and meet the growing demand.

With its worldwide presence, cutting-edge modern technology, multi-layer distribution network, quality products, and skilled human resources, Neelson has successfully established itself as one of the most reliable porcelain tiles manufacturers in India.





## VISION

The ultimate vision of Neelson Group is to play a pivotal role in bringing the ceramic industry to the next level. To achieve this landmark, we are determined to establish ourselves in the growing ceramic industry through quality ceramic products, advanced technology and skilled workforce.

At the same time, we will endeavor to continually sharpen our knowledge and expertise to provide effective, sustainable and affordable ceramic solutions to our esteemed customers to keep up with their expectation.



## MISSION

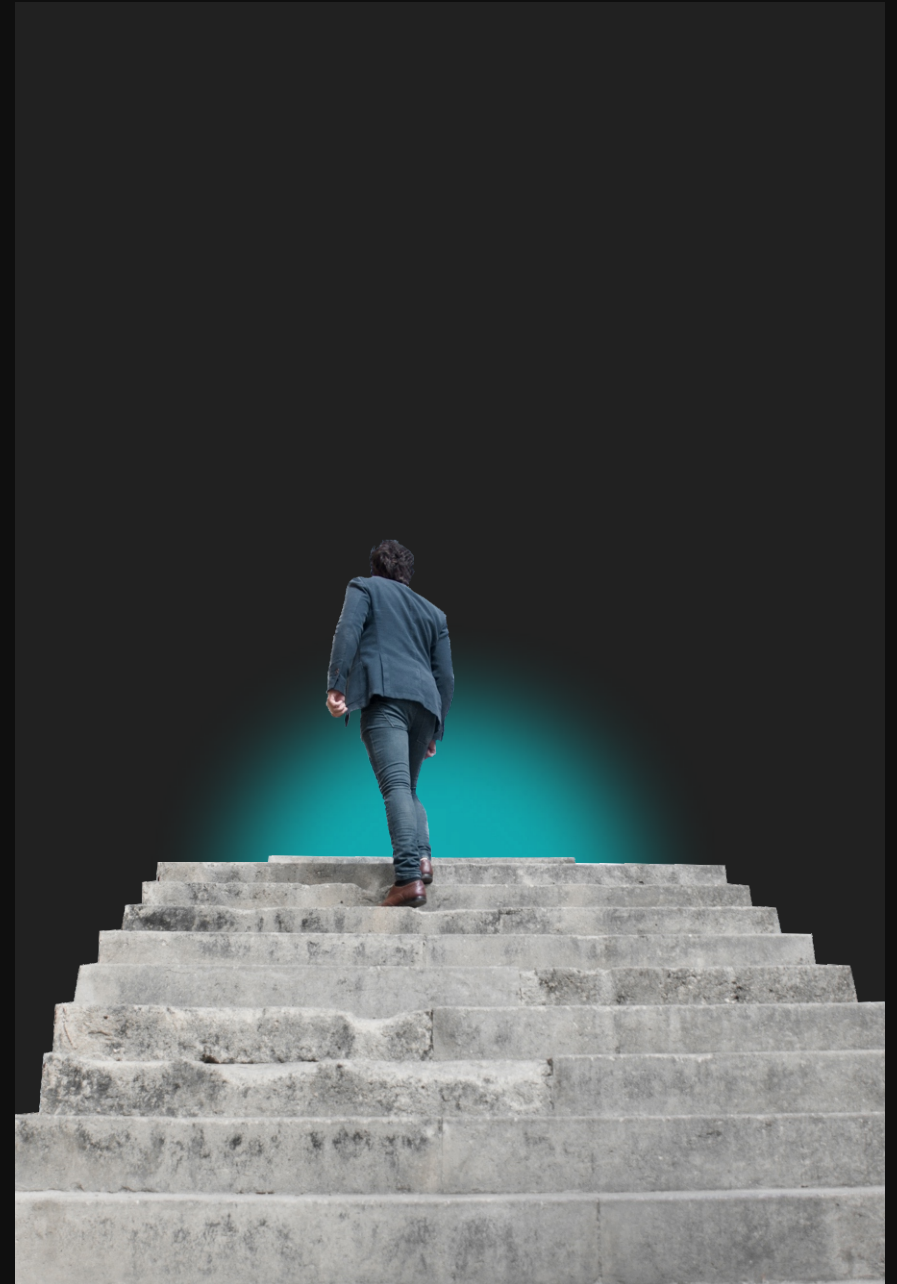
At Neelson, we are determined to offer a full spectrum of quality ceramic products to our worldwide customers. We are resolute in bringing positive changes in the Indian ceramic industry by establishing high-quality standards and providing exceptional products. We reiterate that quality and customer satisfaction will always be our top priority.

We are confident that, through the finest quality glazed porcelain tiles, advanced infrastructure and unmatched geographic coverage, we will indeed dominate the Indian ceramic industry in the coming years.



## OUR VALUE

Innovation, Quality, Integrity and Customer Satisfaction are the four pillars of Neelson Group. We are committed to keeping these four pillars strong forever and ensuring that none pillar gets weakened or corrupted in any circumstance. And to assure this, we constantly work on our infrastructure, quality and skills besides upgrading them as and when needed. We make sure that our partners – distributors, retailers and agents, also flourish while we grow. These four values are no less than a constitution for us.



”

## WORLD CLASS MANUFACTURING UNIT

Neelson's technologies are unique : they are devised, designed and implemented directly in-house at the company's own sites, and are all protected by international patents (which cover the know-how, mechanics and software). Neelson's high-tech porcelain tiles are made using only the choicest of natural and mineral raw materials which are subjected to a process similar to that undergone by rocks on our planet over millennia. Put to high pressure and intense heat (1300°) these raw materials, carefully researched worldwide, form a material of extreme compactness, and non-absorbency.





”

## CHOOSE YOUR SIZE

Charming crossovers with  
different size and finishes.

- **60X120CM**
- **60X60CM**
- **30X60CM**
- Glossy
- Matt
- High Gloss

  
**NEELSON**  
TILES

[www.neelson.in](http://www.neelson.in)



”

## WHY CHOOSE NEELSON CERAMIC?

### State Of The Art Technology

Being one of the Manufacturer and Supplier of Glazed Porcelain Tiles in India, meeting customer expectations is our key priority. In order to meet customer needs, we use the latest manufacturing technologies that help us produce stunning designs and top quality porcelain tiles in India. Our technological infrastructure also enables us to scale up and grow our production capacity whenever needed to manage small as well as bulk orders with ease.

### Breakthrough Innovations

Constant innovation is an essential need to be ahead in the business. At Neelson, we embrace innovation and have a dedicated Research, Development & Innovation team who regularly research and innovate new & sustainable designs, products and technologies that empower us to produce the finest glazed porcelain tiles in the ceramic industry. We strongly believe that money spent on innovation is the biggest investment.

## APPLICATION AREAS



KITCHEN  
COUNTER TOP



DINING  
TABLE



LIVING  
ROOM



FURNITURE



STAIRCASE



OFFICE TABLE



TABLE TOP



DOOR \  
WINDOW FRAME

## TECHNICAL FEATURES



LIGHT  
WEIGHT



WATER  
PROOF



SCRATCHES  
RESISTANT



RESISTANT TO HIGH  
TEMPERATURES



EASY TO  
CLEAN



RESISTANT TO  
BENDING



100%  
NATURAL



RECYCLABLE



RESISTANT TO  
UV RAYS



HYGIENIC

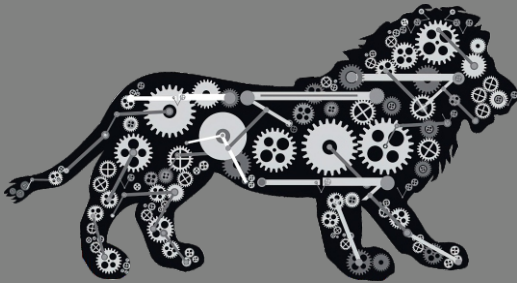
”

## MADE IN INDIA PRODUCTS

Each of our ceramic products are 100% Made In India, which means from raw material to technologies to the workforce– we rely entirely on the Indian market.

We continuously channelize technologies, foster innovation, enhance skill development, protect intellectual property, and build the best in the class manufacturing infrastructure to produce top quality porcelain tiles in India.

MAKE  
IN  
INDIA



”

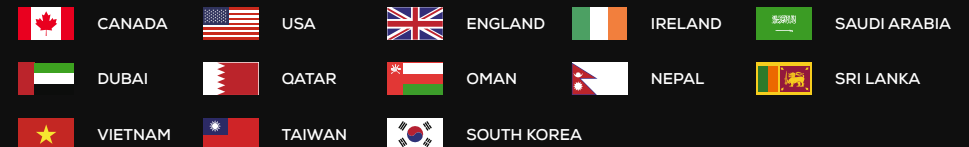
## GLOBAL PRESENCE

Neelson Group has been international in its approach since its inception in 2015. We have taken giant strides across the geographies with time and putting our products into the hands of customers located in the farthest corners of the world. At present, our global footprint spans the Middle East, Europe, Africa, and Asia pacific.

Being one of the leading manufacturer & exporter of glazed porcelain tiles in India, we make sure that our tiling solutions are feasible, sustainable and match the international standards to help us remain the power player in the ceramic industry.



**WE ARE EXPORTING OUR PRODUCTS**  
IN MORE THEN 15+ COUNTRIES AROUND THE WORLD





## Neelson Ceramic LLP

### Unit : 1

S.No. 149/1, Taraviya Sanala Road, Halvad Road, At. Unchi  
Mandal, Morbi - 363 642, (Gujarat) INDIA.

## Neelson Porselano LLP

### Unit : 2

S.No. 81/1 & 80, Taraviya Sanala Road, Halvad Road, At. Ghuntu  
Mandal, Morbi - 363 642, (Gujarat) INDIA.

[www.neelson.in](http://www.neelson.in)

### Domestic Inquiry :

[info@neelsonceramic.com](mailto:info@neelsonceramic.com) | +91 99096 88577

### Export Inquiry :

[export@neelsonceramic.com](mailto:export@neelsonceramic.com) | +91 99798 88533