



MAXON STEEL

IND PANEL ROOF & SIDING

SHANGHAI MTC INDUSTRIAL.CO.,LTD



Index IND PANEL

PU Roof Sandwich	4
Brick Patterns	6
Wood Patterns	8
Stucco Patterns	10
Fluted Design	12
Pure Plain	14
Corrugated Pattern/Longish Stone	16
Stone Patterns/Other Patterns	18

ABOUT IND PANEL

Insulation and Decoration Panels

MAXON STEEL, as a subsidiary to MTC, was established in the end of 2019, when the pandemic plunged the entire world into sorrow and panic. Through those tough years, Ms launched products -IND panels- for both external wall metal facade panel and internal wall panel and the innovative products are PU insulated aluminum roofing panels. MS started international business in the beginning of 2023 when Chinese government announced the ending of pandemic, and now MS built solid partnerships with agents in Vietnam and Nigeria.

Company Mission: To contribute to the growth and development of global construction by providing sustainable and innovative eco-friendly solutions.

Sustainability initiatives: implementing eco-friendly manufacturing processes and reducing carbon footprint.

Industry Recognition: Awarded for excellence in innovation and customer service.



What We Do?

As a specialized manufacturer of Pu insulated panels, MAXONSTEEL provides one-stop service of supplying IND panels for decoration and insulation projects both of wall and roofing. Our main products include the following:

■ EXTERNAL WALL PANELS

Sorts of 3D embossed patterns are available for external wall decoration and heat as well as sound insulation.

■ INTERNAL WALL PANELS

Pre-printed patterns, like wood patterns, stone patterns are perfect options for internal wall decoration and sound insulation.

■ ALUMINUM ROOFING

This is our new released product. Right now there are only extruded aluminum roofing. However, we are the first manufacturer that can produce Pu insulated aluminum roofing continuously.

■ Insulation and Decoration Panels

IND panels excel on both external and internal walls due to their unique combination of thermal insulation properties, durability, and aesthetic versatility. These metal siding panels effectively regulate indoor temperatures by minimizing heat transfer, keeping interiors comfortable in all seasons. Their robust construction withstands external elements, including harsh weather conditions, UV radiation, and moisture, ensuring long-term performance and structural integrity.



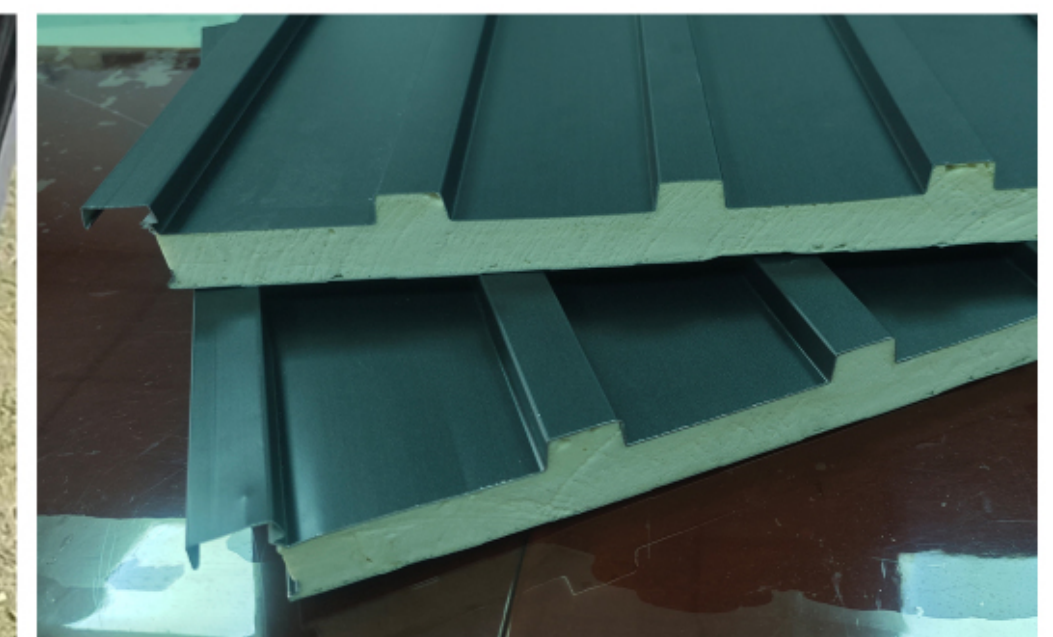
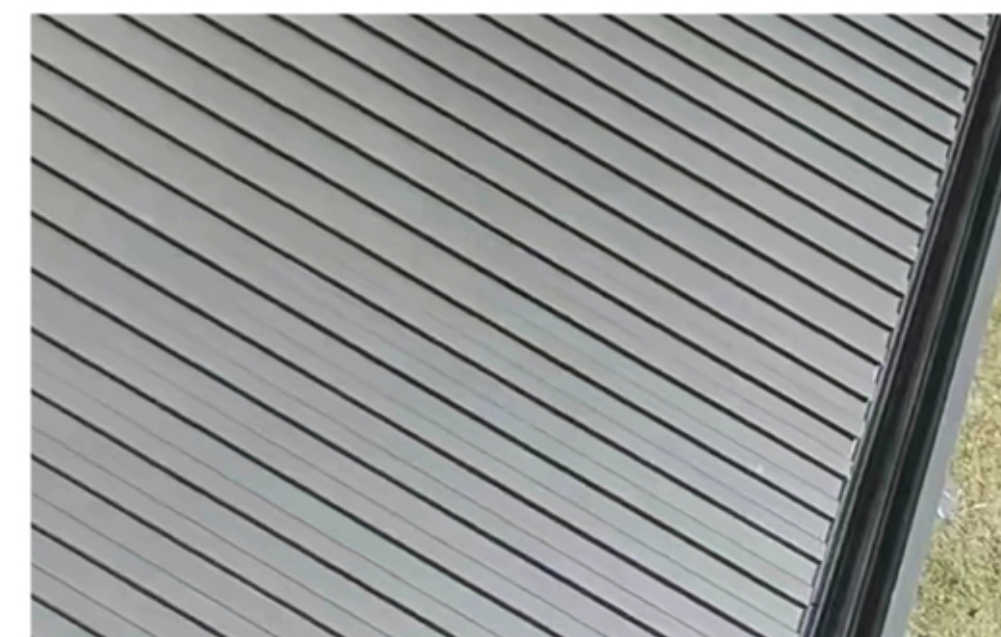
■ Insulation and Decoration Panels

The polyurethane-sealed edges ensure airtightness and moisture resistance, minimizing thermal bridging and energy loss. The Galvalume steel exterior offers exceptional corrosion resistance and longevity, ideal for harsh climates. The Rockwool core provides superior fire resistance (A2 non-combustible rating), sound absorption (NRC >0.8), and thermal insulation ($\lambda \sim 0.035$ w/m·k) reducing HVAC costs by up to 30%.



■ Insulation and Decoration Panels

The FAIR panel sandwich structure with interlocking system provides excellent thermal insulation, reducing energy costs and maintaining stable indoor temperatures, and the most important, corrosion resistant. Lightweight and easy to install, they offer a versatile and efficient roofing solution.

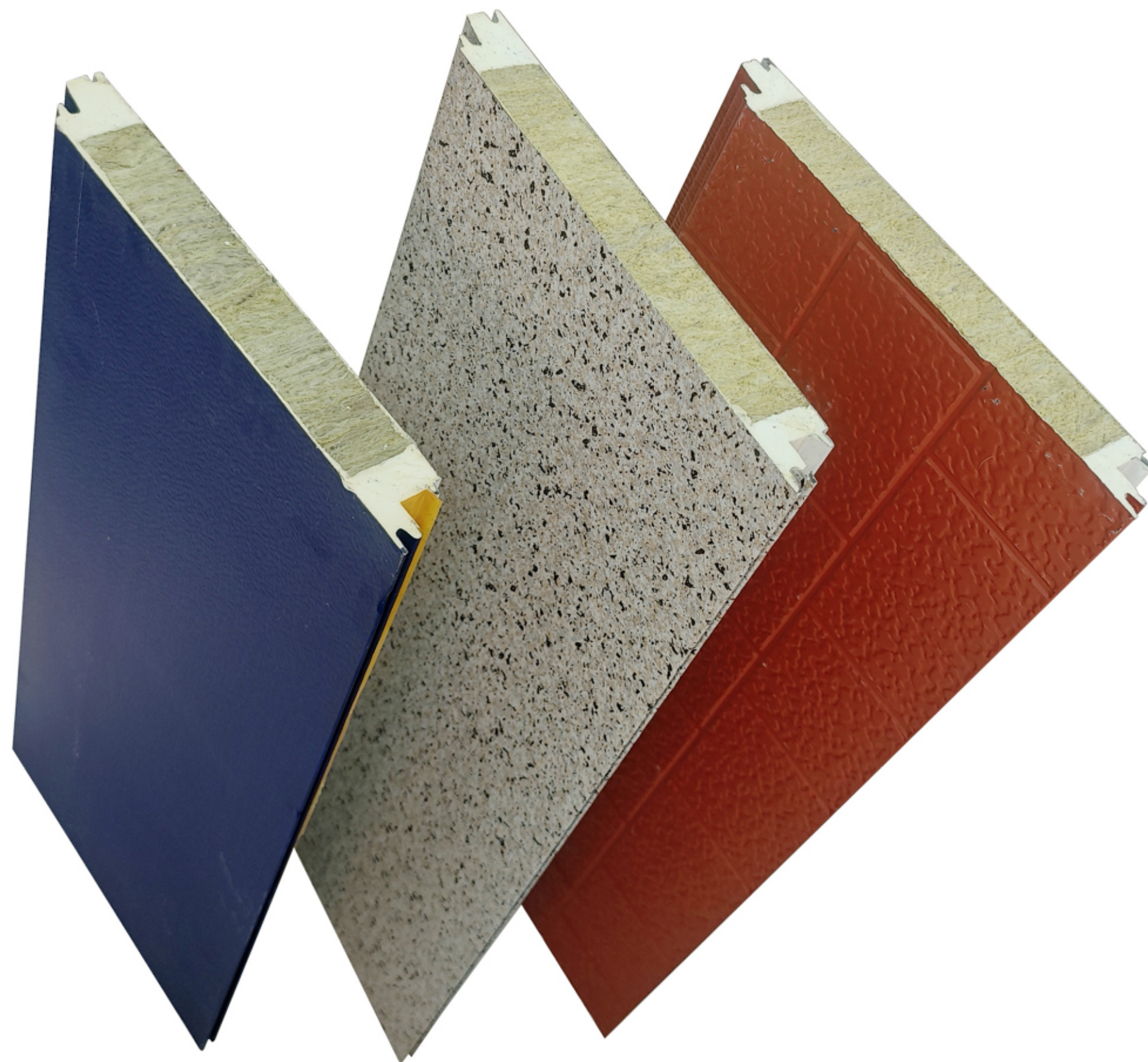


Rockwool Metal Siding

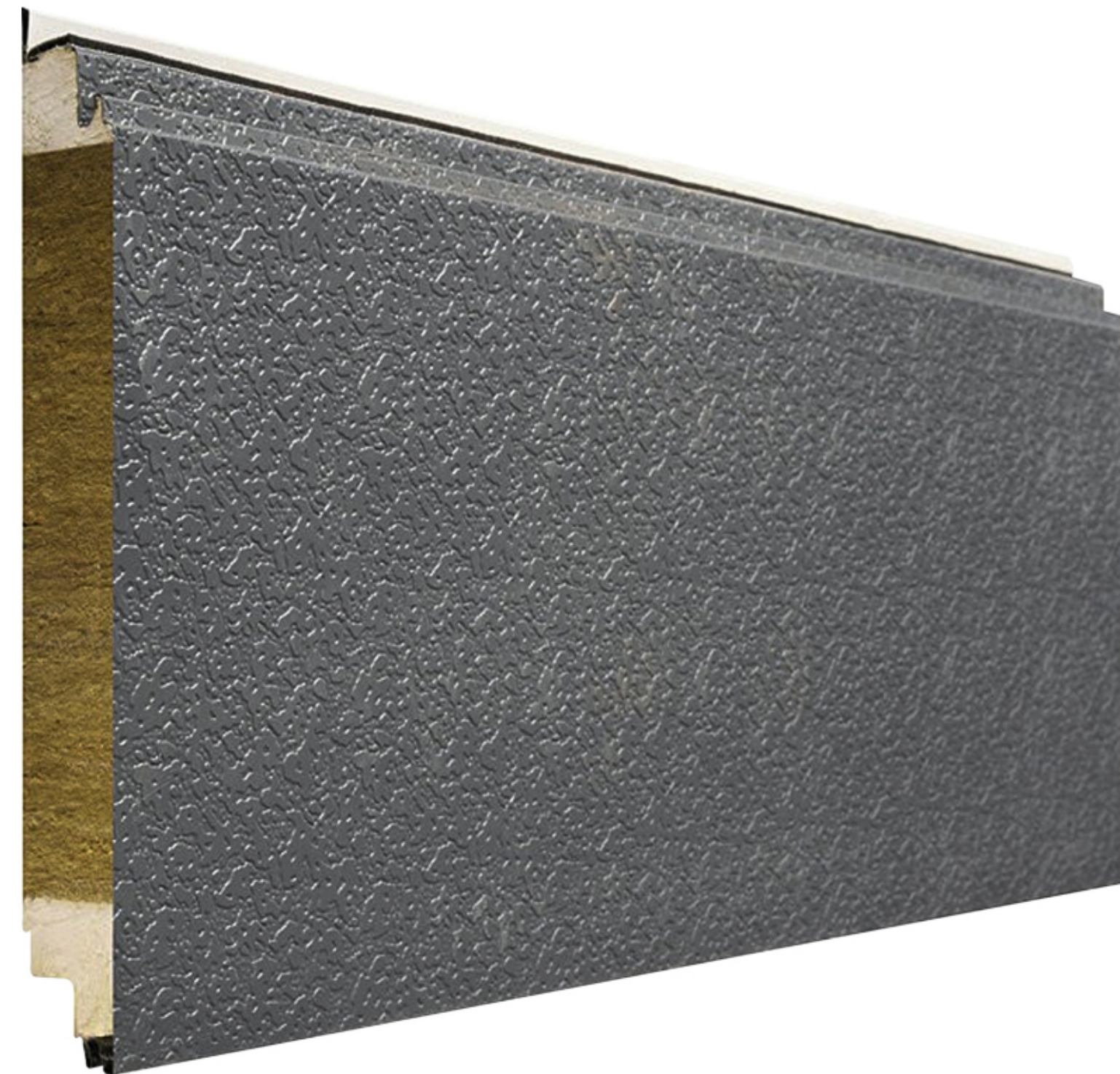
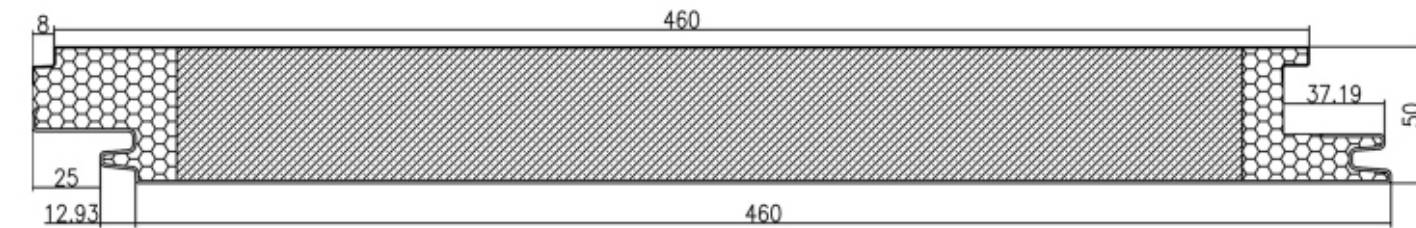
This high-performance cladding system integrates 50mm-thick Rockwool insulation (density 80kg/m³) sandwiched between durable Galvalume steel layers.

The polyurethane-sealed edges ensure airtightness and moisture resistance, minimizing thermal bridging and energy loss. The Galvalume steel exterior offers exceptional corrosion resistance and longevity, ideal for harsh climates. The Rockwool core provides superior fire resistance (A2 non-combustible rating), sound absorption (NRC >0.8), and thermal insulation ($\lambda \approx 0.035$ w/m·K) reducing HVAC costs by up to 30%.

Designed for industrial, commercial, and residential applications, this system meets ASTM and EN standards, combining sustainability (recyclable materials) with low-maintenance durability. Its light weight yet rigid structure of the **rockwool wall sandwich panel** or **rockwool roof sandwich panel** allows fast installation while maintaining structural integrity under wind loads up to 2.5 kPa.



Rockwool Works With PU Foam



Material composition

Galvalume steel (55% Al-Zn alloy coating) + 50mm Rockwool core.



Sealing Technology

Polyurethane edge sealing for enhanced weatherproofing.



Performance Metrics

Fireproof, noise reduction, and energy efficiency



Applications

Versatile for roofs, walls, and facades in diverse climates.

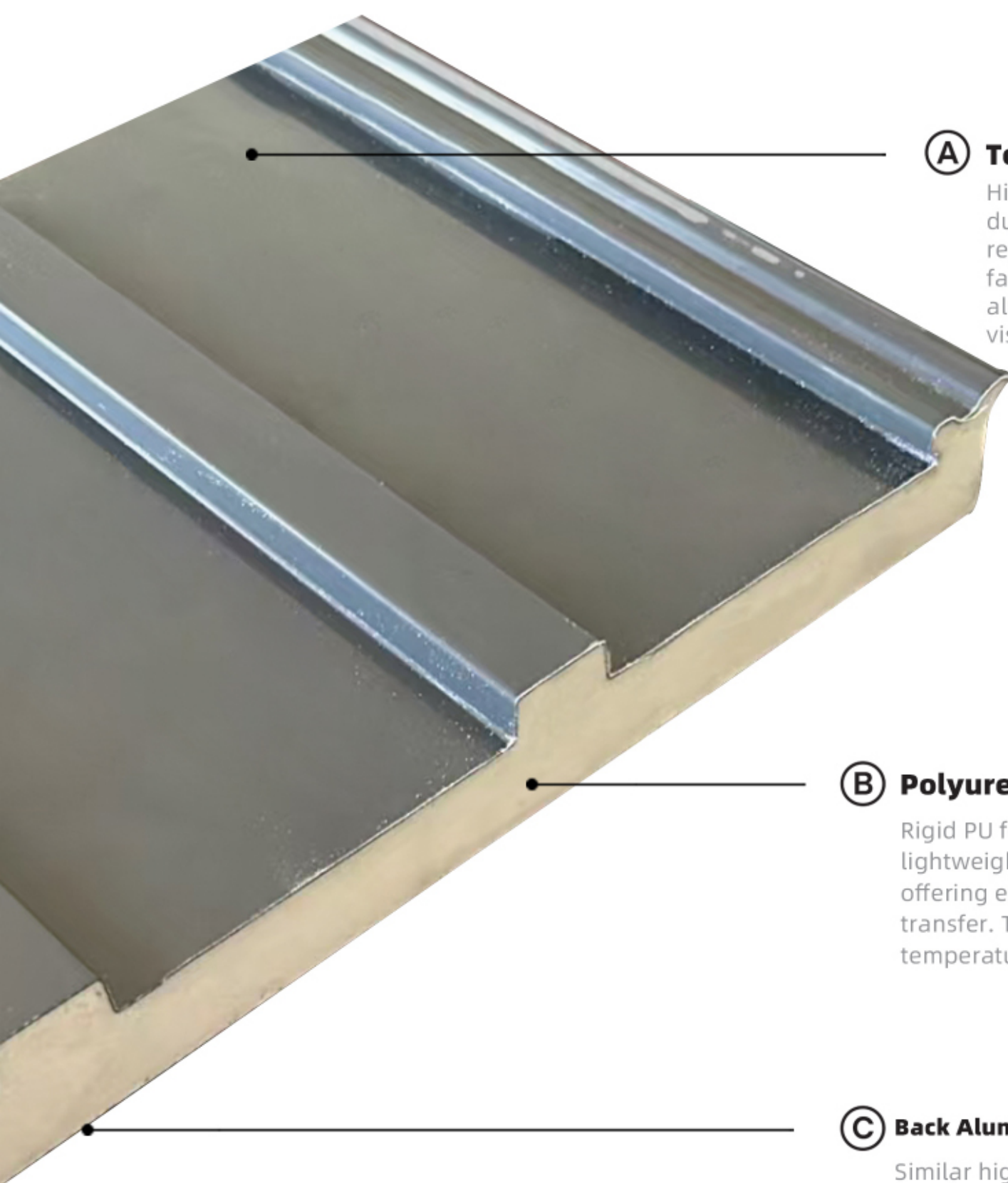
This Rockwool insulated panel features an effective width of 460mm and a thickness of 50mm, ensuring excellent thermal and acoustic insulation. The Rockwool core has a density of 80kg/m³, providing superior fire resistance and stability. The panel is clad with 0.25mm thick Galvalume steel, offering enhanced durability, corrosion resistance, and structural strength.

The PU foam-sealed edges improve moisture resistance and sealing performance, making it suitable for various applications, including wall and roof insulation, cold storage, and cleanroom constructions. Its combination of high-performance insulation and robust exterior protection ensures long-lasting efficiency in industrial and commercial environments.

The male and female interlocking system, or tongue and groove joint method, ensures a secure, seamless connection between panels. The male (tongue) fits precisely into the female (groove), enhancing structural stability, insulation, and waterproofing. This method is widely used in PU metal siding, rock wool panels, and sandwich panels for efficient installation and durability.

PU Roof Sandwich

FAIR is the abbreviation for Fluted Aluminum Roof panels. FAIR panels are high-performance roofing solutions combining durability and thermal efficiency. They feature an top and back aluminum layer with a rigid PU or Polyurethane foam core. This structure provides excellent insulation and energy savings by reducing heat transfer. The interlocking design ensures a sleek, modern look with concealed fasteners and robust weather protection. In addition, it prevents leaks and enhances structural integrity. Lightweight and corrosion-resistant, these insulating roof aluminum sandwich panels are easy to install and require minimal maintenance. Ideal for both residential and commercial applications, PU roof sandwich panels aluminum offer a durable, efficient, and aesthetically pleasing roofing option.

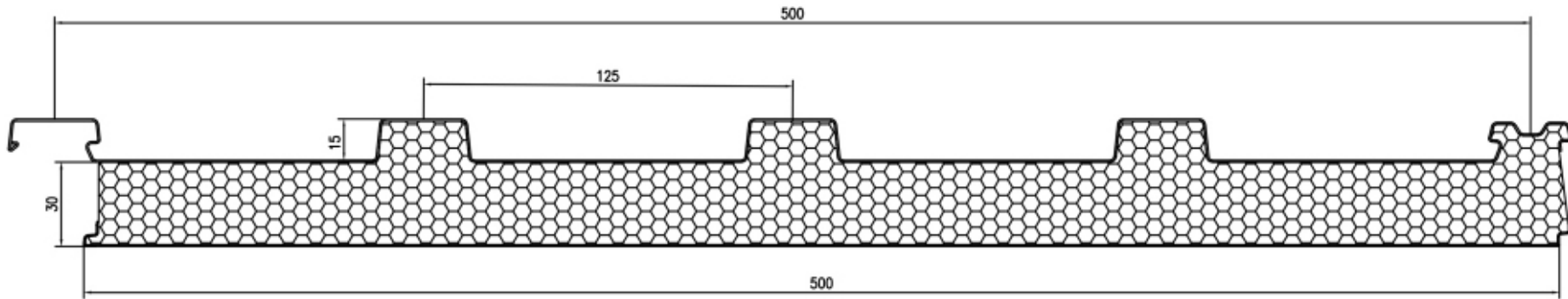


A Top Aluminum Layer
High-grade aluminum, often pre-coated for enhanced durability and aesthetics, Provides a strong, weather-resistant outer surface that protects against environmental factors like rain, wind, and UV radiation. It also adds to the aluminum pu roof sandwich panel's structural integrity and visual appeal.

B Polyurethane(PU)Core
Rigid PU foam, known for its high thermal resistance and lightweight properties, acts as the primary insulation layer, offering excellent thermal performance by reducing heat transfer. This core helps in maintaining consistent indoor temperatures and contributes to energy efficiency.

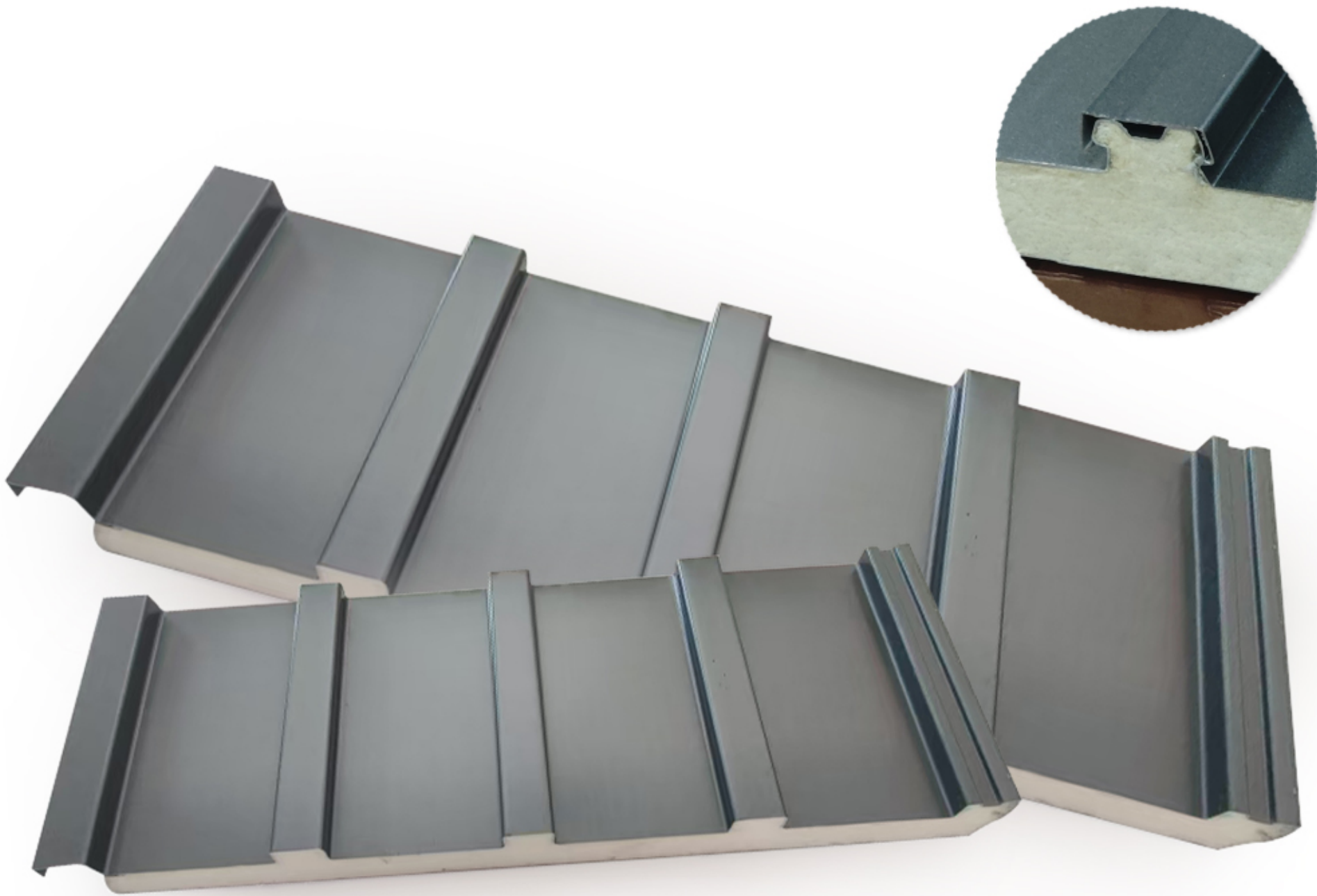
C Back Aluminum Layer
Similar high-grade aluminum as the outer layer, often with protective coatings, serves as the internal facing of the panel, providing additional structural support and maintaining the roof's integrity from the underside.

DIMENSION



Size	500mm(width)*3850mm(Lengths)
Panel Thickness	45mm
Aluminum Thickness	0.5mm(Facial)+0.3mm(Back)
Area	1.925m ² /pcs
Weight	6-6.5kg/m ²
Packing	5 pcs / box,144 box/40ft

There are other thickness optional, like 65mm and 95mm. Also, the pu aluminum roof sandwich panels can be cut to any desired lengths, but for convenient shipping, it is suggested to choose length 2900mm or 3850mm.



High weather resistance and high corrosion resistance

A Closer look at thermal Metal Siding panels

Exterior wall metal siding IND panels are a highly efficient building envelope solution, designed for superior thermal insulation, structural strength, and aesthetic appeal. These external metal siding panels consist of an insulating core—typically made from polyurethane, polyisocyanurate, or mineral wool—sandwiched between two metal facings, often steel or aluminum. They provide excellent thermal performance, significantly reducing energy costs by maintaining interior temperature stability.

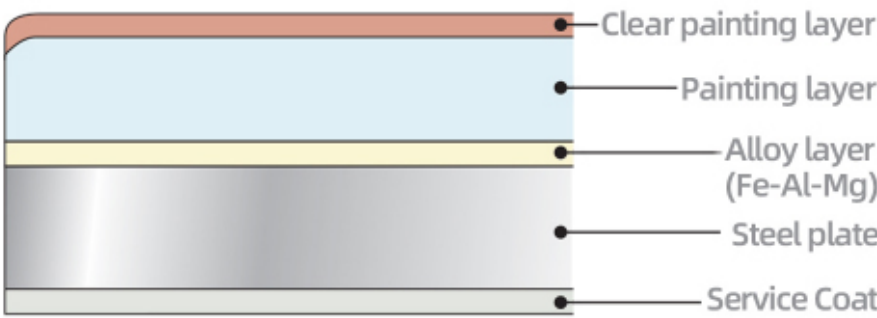
Durability is a key feature; the metal facings are coated for weather resistance and longevity, capable of withstanding harsh conditions like wind, rain, and UV exposure. Fire resistance and acoustic insulation are additional benefits, particularly in mineral wool panels, making them suitable for diverse applications from industrial warehouses to commercial buildings and modern residential homes.

Installation is straightforward due to the prefabricated nature of the panels, reducing construction time and labor costs. They come in various finishes and colors, allowing for extensive architectural creativity. Overall, external wall IND panels offer a blend of energy efficiency, resilience, and design versatility, making them a preferred choice for contemporary construction projects.



(A) Surface painted, high-corrosion-resistant steel plate that is rust-resistant and durable.

■ Surface structure



(B) Insulator High-rigid Polyurethane foam
High density and sound insulation
Excellent performance of heat insulation

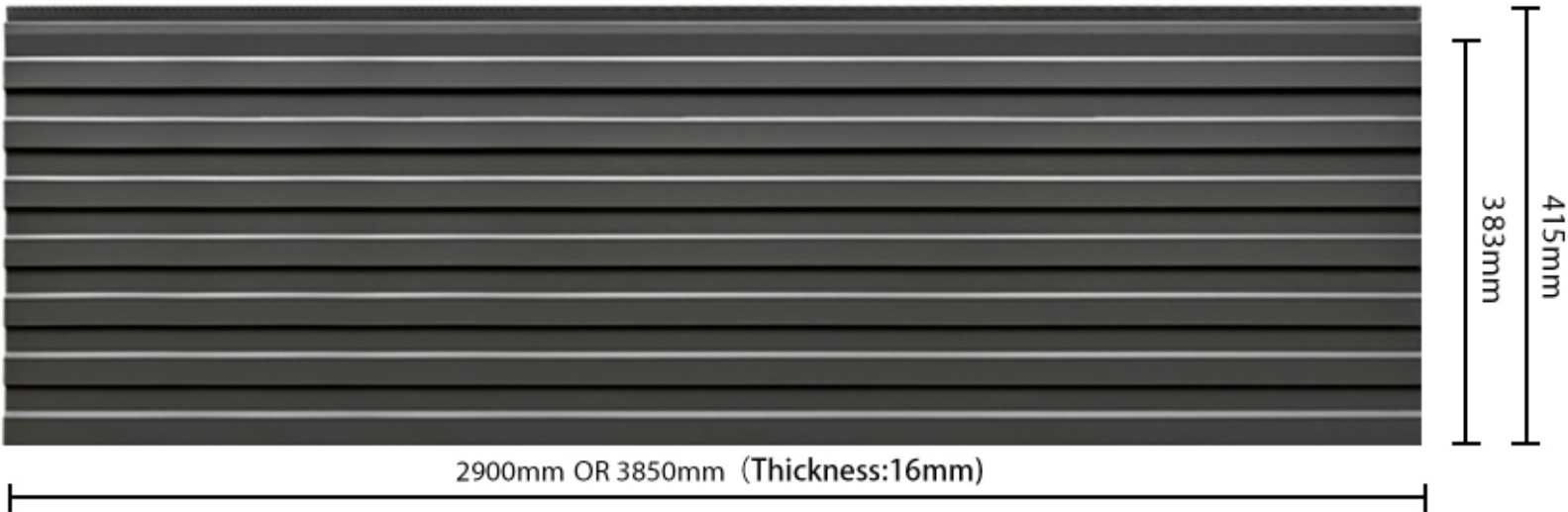
■ Polyurethane foam density: **40-45kg/m³**

(C) Back material Durable aluminum laminate processing paper.
Maintains a comfortable indoor temperature by reflecting radiant heat.

External Wall Panel Dimensions

Cut to standard sizes and desired lengths. We provide varied decorative textures tailored to different architectural styles, each with slightly differing sizes and specifications.

DIMENSION A



Size	16mm(Thickness) x 383mm(Height) X 2900mm(Lengths)
Area	about 1.11m ² / pcs
Weigh	about 2.8-3.5kg / m ²
Packing	10 sheet / box, 280box / 40ft

We can produce customised thickness for external IND panels like 15mm, 20mm and 23mm etc. Also, the panels can be cut to any desired lengths, but for convenient shipping, it is suggested to choose length 2900mm or 3850mm.

DIMENSION B



Size	16mm(Thickness) x 400mm(Height) X 2900mm(Lengths)
Area	about 1.16m ² / pcs
Weigh	about 2.8-3.5kg / m ²
Packing	10 sheet / box, 280box / 40ft

We can produce customised thickness for external IND panels like 15mm, 20mm and 23mm etc. Also, the panels can be cut to any desired lengths, but for convenient shipping, it is suggested to choose length 2900mm or 3850mm.



STANDARD BRICK SERIES



NOTE: THERE ARE TOO MANY COLORS TO BE ALL LISTED ABOVE. IF NONE OF THE ABOVE COLORS IS YOUR TASTE, PLEASE CONTACT US FOR UPDATED COLORS OR CUSTOMISE YOUR REQUIRED COLORS..

COARSE BRICK SERIES



WIDE-NARROW BRICK SERIES



3 Bricks Patterns





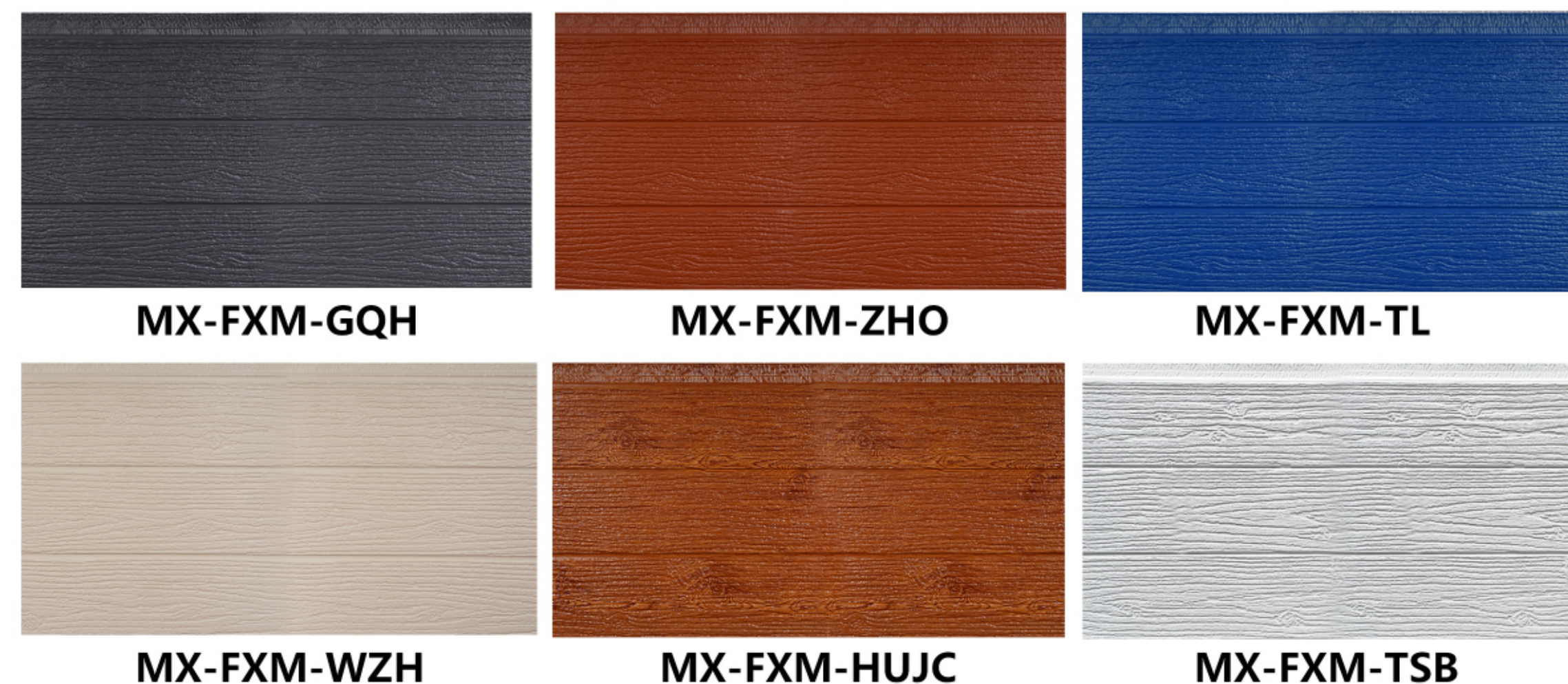
WOOD PATTERNS SERIES

3D Wood Grain



NOTE: THERE ARE TOO MANY COLORS TO BE ALL LISTED ABOVE. IF NONE OF THE ABOVE COLORS IS YOUR TASTE, PLEASE CONTACT US FOR UPDATED COLORS OR CUSTOMISE YOUR REQUIRED COLORS..

3D OAK Grain

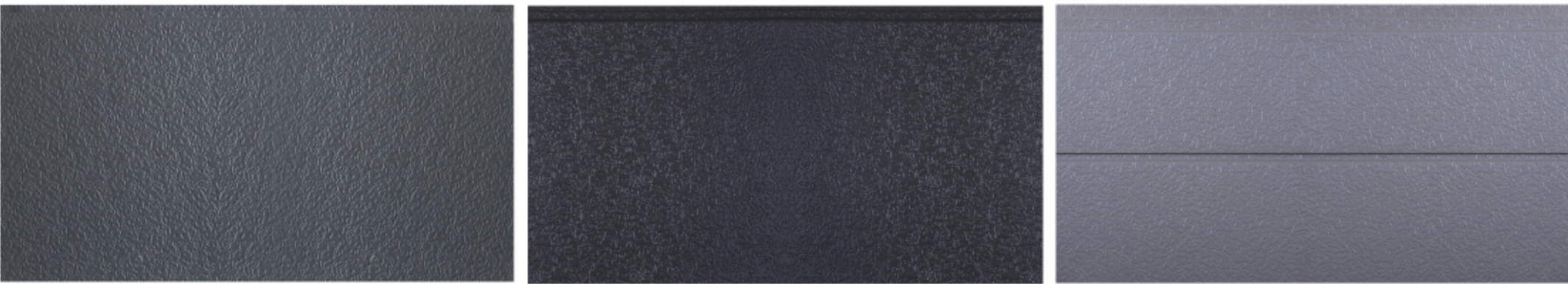


Wood Textures





Stucco Series



GQH-TTW

SH-TTW

QH-TTW1G



SYH-TTW

XYB-TTW

WZHU-TTW



TSB-TTW

WZHU-TTW2G

MHU-TTW1G



MHU-TTW

SMH-TTW

QZS-TTW1G

NOTE: THERE ARE TOO MANY COLORS TO BE ALL LISTED ABOVE. IF NONE OF THE ABOVE COLORS IS YOUR TASTE, PLEASE CONTACT US FOR UPDATED COLORS OR CUSTOMISE YOUR REQUIRED COLORS..

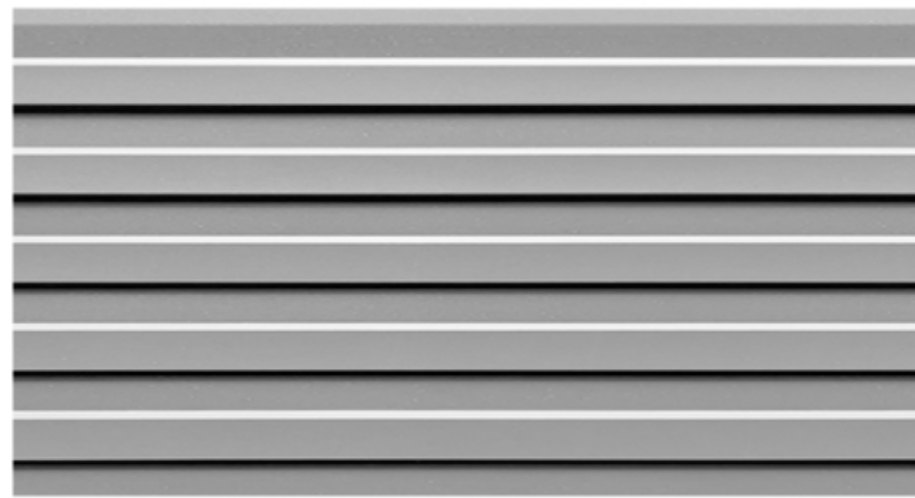
VERTICAL SERIES



TRB-XYB



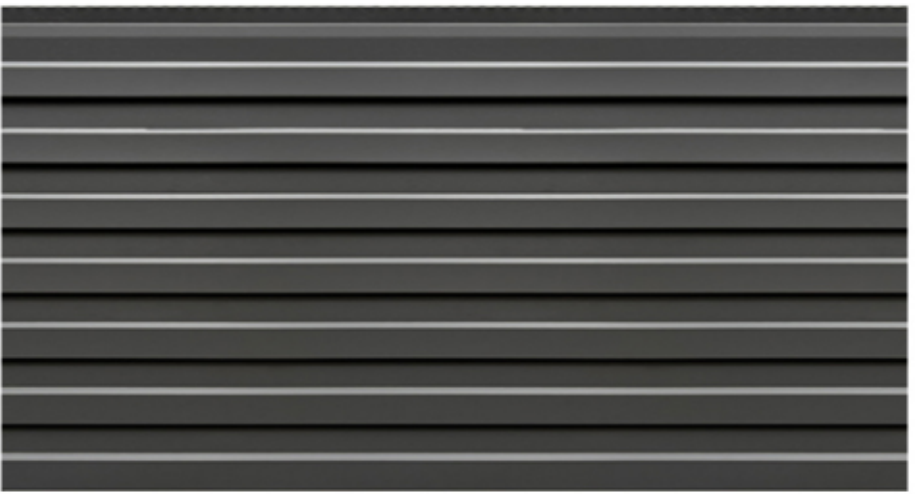
TRB-GQH



TRB-QH



TRB-TSB



TRB-SH



TRB-SH



TRB-HUJC



TRB-HSM

NOTE: THERE ARE TOO MANY COLORS TO BE ALL LISTED ABOVE. IF NONE OF THE ABOVE COLORS IS YOUR TASTE, PLEASE CONTACT US FOR UPDATED COLORS OR CUSTOMISE YOUR REQUIRED COLORS..





PLAIN DESIGN SERIES

Pure Flat



PBD-TSB



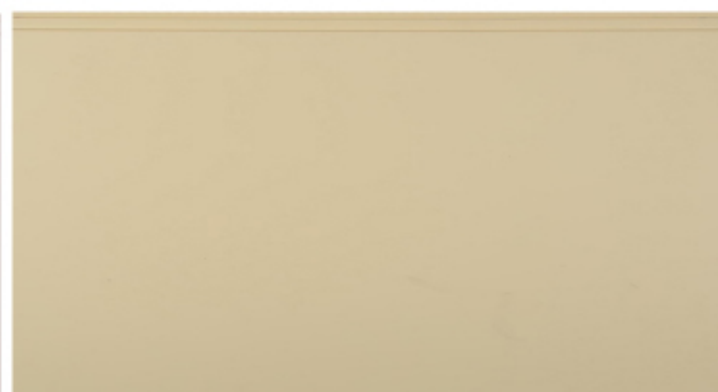
PBD-QH



PBD-GQH



PBD-WZH

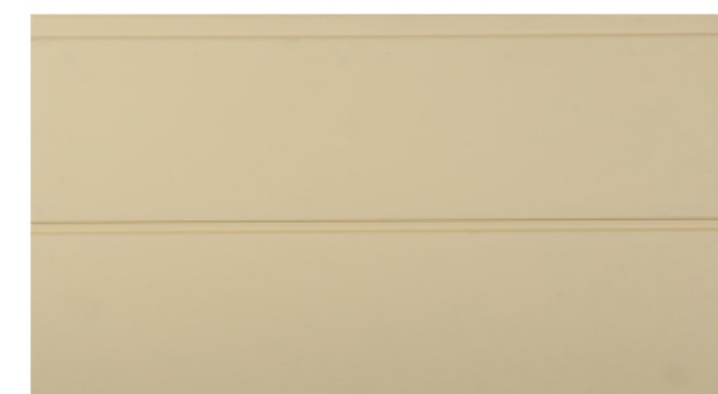


PBD-MHU

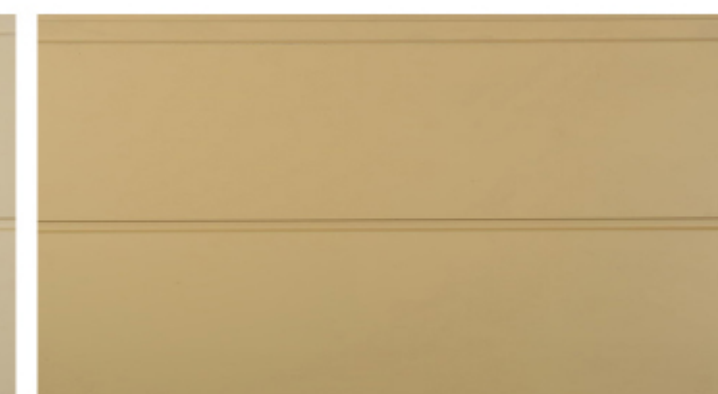


PBD-ZHO

Flat Extensions



PBG-MHU



PBG-SMHU



PBG-QZS



PBG-TSB



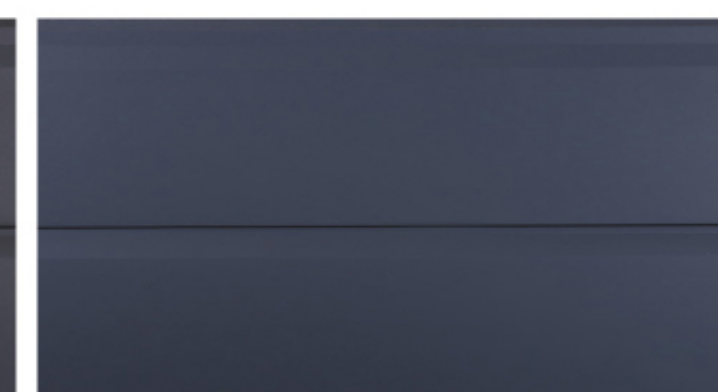
PBG-QH



PBG-XYB



PBV-SH



PBV-GQH

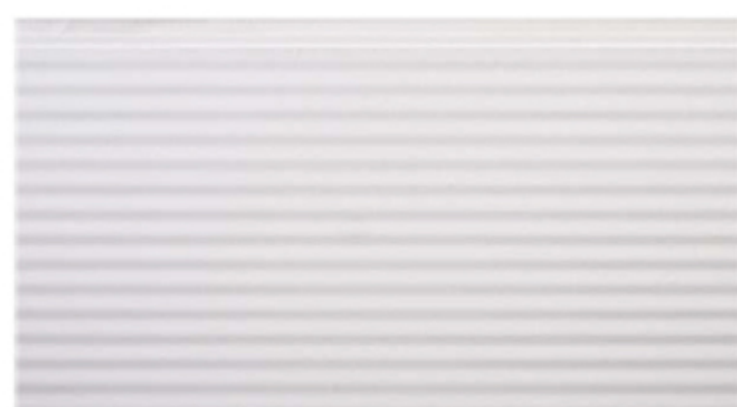


PB2V-LH

NOTE: THERE ARE TOO MANY COLORS TO BE ALL LISTED ABOVE. IF NONE OF THE ABOVE COLORS IS YOUR TASTE, PLEASE CONTACT US FOR UPDATED COLORS OR CUSTOMISE YOUR REQUIRED COLORS..



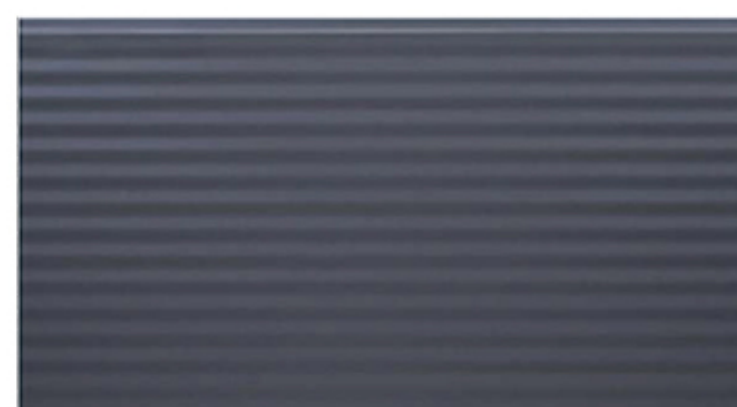
CORRUGATED PATTERN SERIES



RIB-TSB



RIB-QH



RIB-GQH



RIB-WZHU



RIB-QZS



RIB-SH



TSB-CTS



QH-CTS



GQH-CTS



RHU-CTS



MHU-CTS

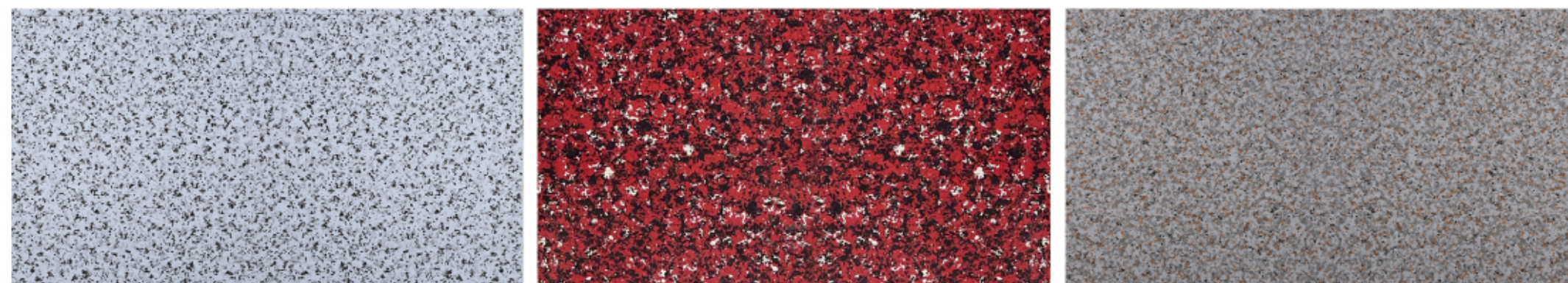


QZS-CTS

NOTE: THERE ARE TOO MANY COLORS TO BE ALL LISTED ABOVE. IF NONE OF THE ABOVE COLORS IS YOUR TASTE, PLEASE CONTACT US FOR UPDATED COLORS OR CUSTOMISE YOUR REQUIRED COLORS..



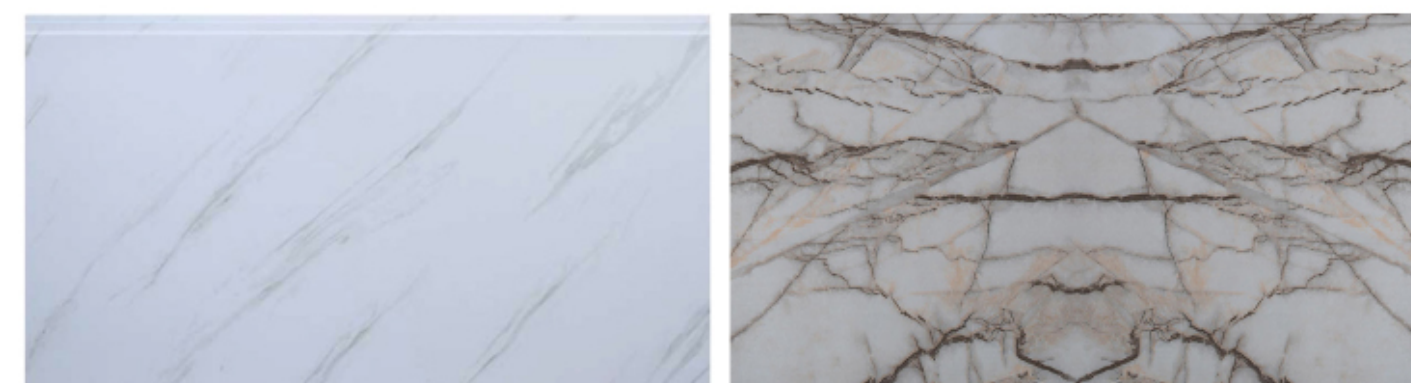
Marble Stone Series



PPBW-MBS-ZMS

PP-MBS-TD

PP3C-MBS-SMS



PP-MBS-TD

PP-MBS-TD

Masonry Series



PP-SAC



PP-SAC-TT



PP-HOAC



PP-HOAC-TT



PP3D-HAS



PP3D-MHUAS

Other patterns



MX-HOBZ-PR3D



MX-HBZ-PR3D



MX-3SZ-PR3D



MX-3701-3D



MX-3SZ-PR3D

TO BE CONTINUED.....

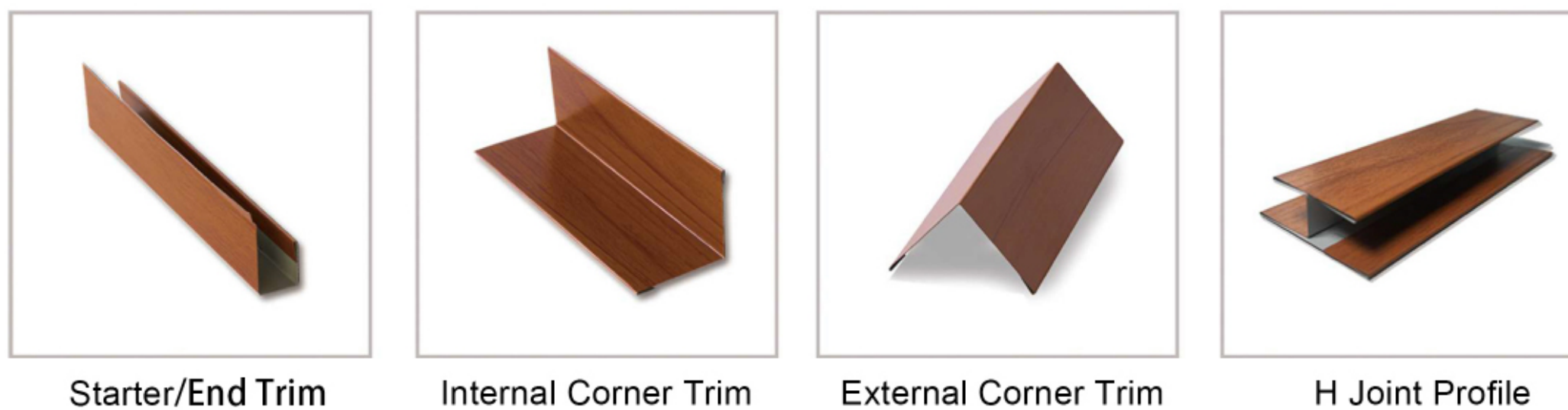
NOTE: THERE ARE TOO MANY COLORS TO BE ALL LISTED ABOVE. IF NONE OF THE ABOVE COLORS IS YOUR TASTE, PLEASE CONTACT US FOR UPDATED COLORS OR CUSTOMISE YOUR REQUIRED COLORS..

Metal Siding Trim & Accessories

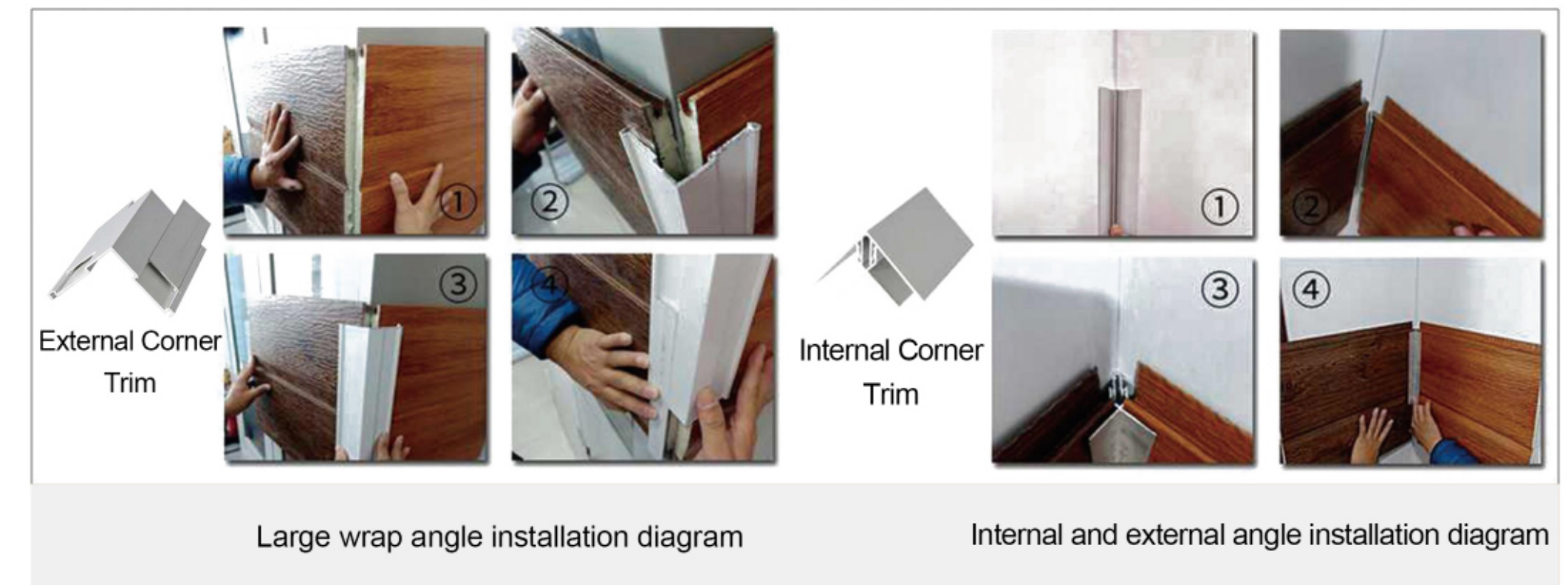
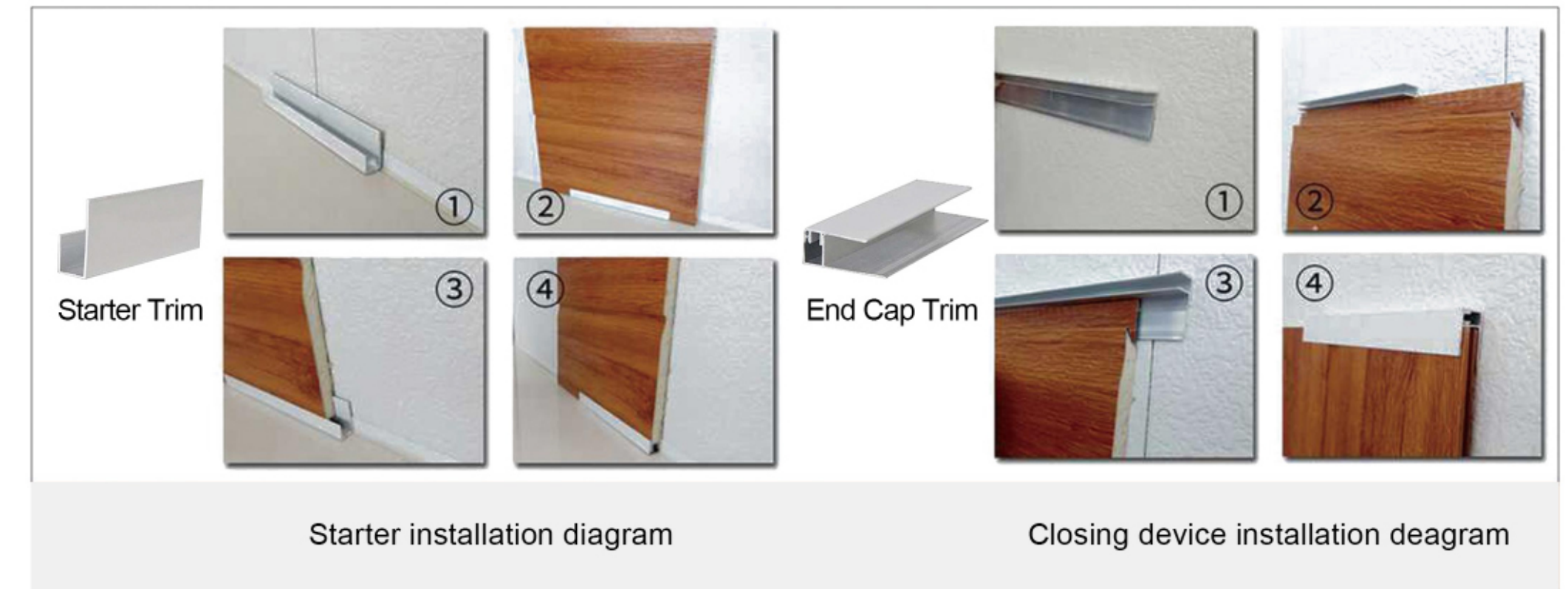
Aluminium Profile Accessories



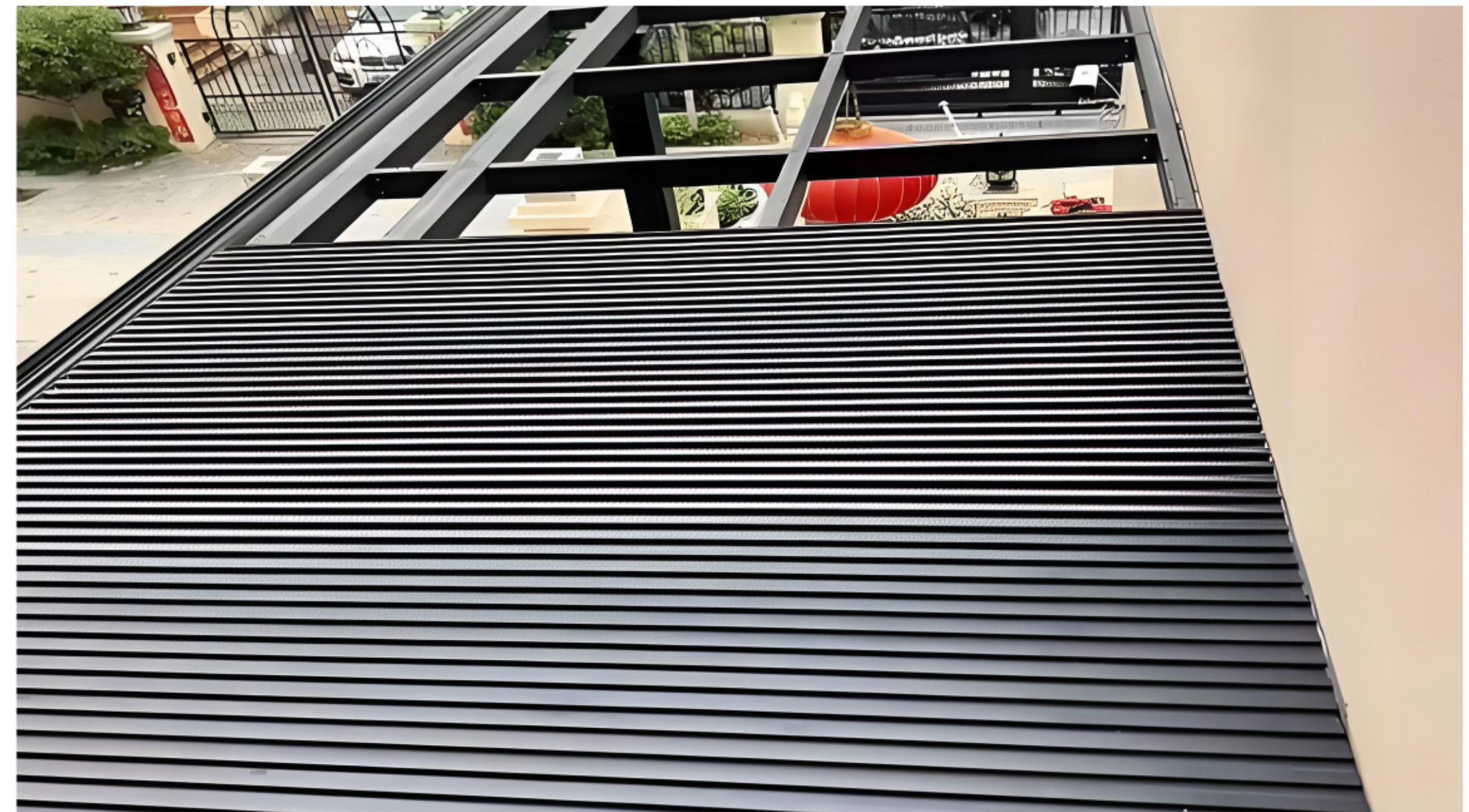
Color-Coated Steel Accessories



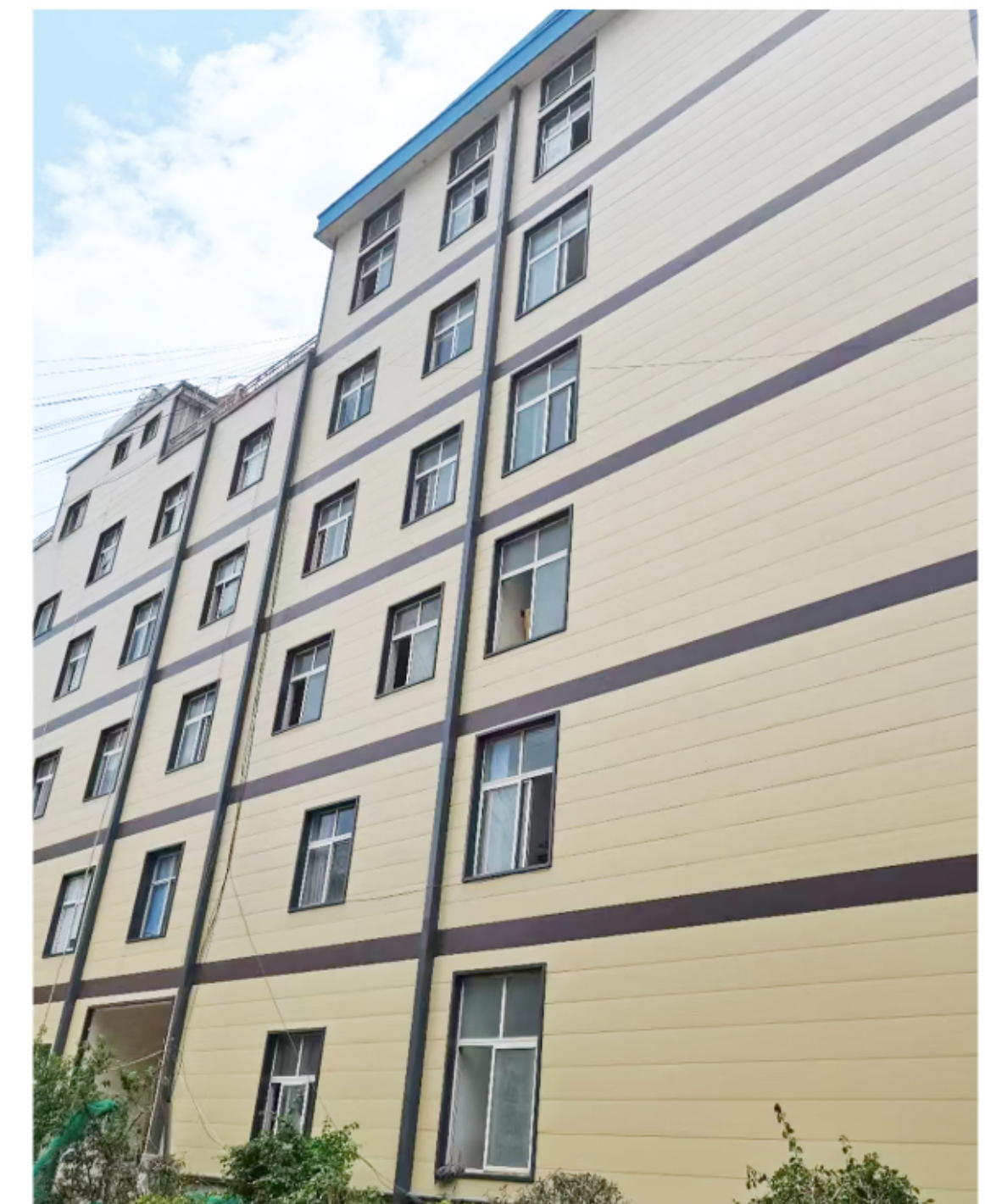
Accessories Installation Guide



FAIR Panels Installation



CASES





QJC-SP1V

WOOD PATTERNS SERIES



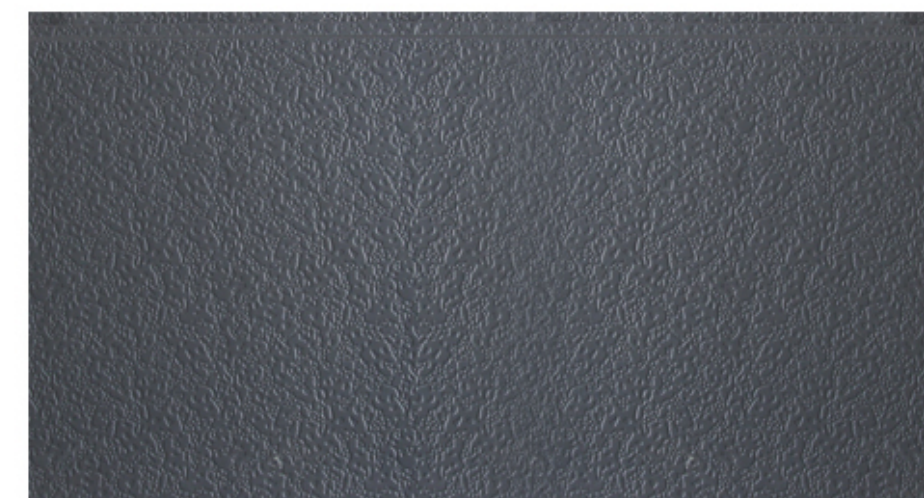
VERTICAL SERIES



TRB-HSM



STUCCO SERIES



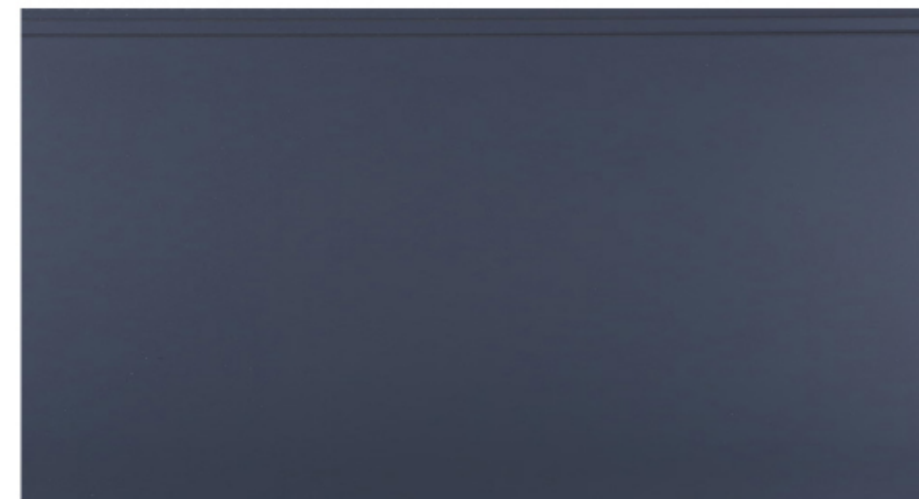
GQH-TTW



MHU-TTW



PLAN DESIGN SERIES



PBD-GQH



PBG-TSB



XYB-BZ7



GQH-BZ7



STANDARD BRICK SERIES

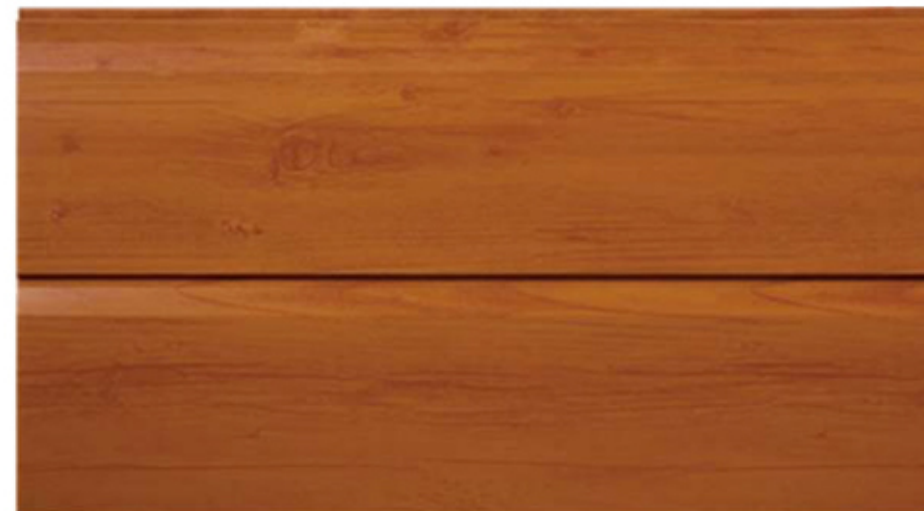


GQH-CTS



TSB-CTS

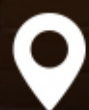
LONGISH STONE SERIES



HUSM-PM1V



HEJC-SP1V



HQ: 609 Jinzhang Hwy, Zhangyan Town, Jinshan District of Shanghai.
Facility: Industry Park of Gushi County, Henan Province, China



Website: www.maxon-steel.com | www.indpanel.com
Email: info@indpanel.com