

KERNEL

Kernel Global Headquarters and
Medical Innovation Center

www.kernelmedint.com 

Please refer to our website
For more product information



Kernel Building, Economic Development District,
Xuzhou City, Jiangsu Province, China



0086-516-8773 2209 / 8773 2210 / 8773 2218



admin@kernelmed.com



This album is copyrighted and any reproduction is prohibited Feb. 2025

KERNEL

Be concentrated on the field of
Skin photomedicine

DERMATOLOGY & HAIR
SMART HOME HEALTHCARE
MEDICAL AESTHETIC

WE WERE FOUNDED
IN 1997

5⁺

NATIONAL SCIENCE
AND TECHNOLOGY PLAN PROJECT

14⁺

SCIENCE AND TECHNOLOGY
PLAN PROJECT

160⁺

MEDICAL DEVICES
REGISTERED PRODUCTS

200⁺

INTELLECTUAL PROPERTY

ABOUT KERNEL

Kernel Medical, founded in 1997, is a joint-stock enterprise specializing in the research and development, production, sales, and service of high-tech medical electronic products. It is recognized as a national high-tech enterprise, an intellectual property advantage enterprise, and a United Nations supplier.

The company is committed to providing global clients with skin and hair diagnosis and treatment devices, smart home healthcare products, high-value medical aesthetic products, and innovative solutions.

"Leading in technology, promises to lives" is the company's mission. Through deep collaboration and interaction with top academic experts in related fields, Kernel Medical continuously pushes the boundaries of experience and technology, explores the forefront of the industry, and enhances the accessibility of high-value medical devices and services.

With a global presence, Kernel Medical has established branches in the United States, Russia, Singapore, Europe, Southeast Asia, and other countries and regions. Additionally, the company maintains offices across various provinces in China.





CATALOG >

09-36

DERMATOLOGY & HAIR GROWTH

09-11

Clinical UV phototherapy device 311nm series

12-14

Clinical UV phototherapy device 308nm series

15-16

Clinical UV phototherapy device 365 nm series

17-18

Skin and hair observation device

19-20

Home UV phototherapy device 311nm series

21-28

Home UV phototherapy device 308nm series

29-32

LED light therapy device

33-36

Hair growth system

39-44

INTELLIGENT HOME-USE MEDICAL DEVICES

39-44

- Nasal irrigation and laser therapy device/ semiconductor laser therapy device
- Medical electronic thermometer
- Rebound tonometer
- Pelvic floor muscle therapy device
- Pelvic floor magnetic therapy device

47-52

MEDICAL AESTHETICS

47-50

Superficial X-ray radiotherapy system

51-52

In vivo reflectance confocal microscope

DERMATOLOGY &
HAIR GROWTH

01

DERMATOLOGY & HAIR GROWTH

LIGHT SOURCE
AND TECHNOLOGY

UV PHOTOTHERAPY | PHOTODYNAMIC THERAPY
PDT PHOTODYNAMIC THERAPY | LLLT LOW LEVEL LASER THERAPY





KN-4001

KN- 4001 Series

- Full-body cabinet UV phototherapy device.
- Under the configuration of mixed light source, it supports independent irradiation of UVA and UVB.
- Time/dose dual mode, convenient for different treatment habits.
- Software and hardware dual treatment monitoring, microcomputer control is convenient and fast.

Product model	KN-4001A/B/AB		
Treatment area	49000cm ² ±10%		
Lamp configuration	KN-4001A/B	UVA*40 / UVB*40	
	KN-4001AB	UVA*20 + UVB*20	

Scope of application:

Applicable to clinical units or under the guidance of doctors, for skin disease patients to self-treat vitiligo, psoriasis, pityriasis rosea, eczema skin diseases with ultraviolet irradiation.



KN-4005

KN- 4005 Series

- UVA and UVB work independently and can be freely combined.
- Scientific ventilation and cooling system and large treatment space.
- Each lamp is equipped with an independent reflector.
- Software and hardware dual treatment monitoring system.

Product model	KN-4005A/B/AB		
Treatment area	43000cm ² ±10%		
Lamp configuration	KN-4005A/B	UVA*26 / UVB*26	
	KN-4005AB	UVA*13 + UVB*13	



KN-4004

KN- 4004 Series

- Double-door structure, adjustable doors to achieve free adjustment of the irradiation area.
- Hidden circuit control system, saving placement space.
- UVA and UVB work independently and can be freely combined.
- Pulleys are installed at the bottom to facilitate user movement.

Product model	KN-4004A/B/AB		
Treatment area	14771cm ² ±10%		
Lamp configuration	KN-4004A/B	UVA*8 / UVB*8	
	KN-4004AB	UVA*4 + UVB*4	



KN-4002

KN- 4002 Series

- Half-body and half-cabin floor-standing phototherapy device
- Under the configuration of mixed light source, it supports independent irradiation of UVA and UVB.
- Touch screen operation Convenient and fast operation, dual hardware and software treatment monitoring.
- Electric lifting and 90° rotation of the irradiator, convenient for multi-position irradiation.

Product model	KN-4002A/B/AB		
Treatment area	4020cm ² ±10%		
Lamp configuration	KN-4002A/B	UVA*10 / UVB*10	
	KN-4002AB	UVA*6 + UVB*4	

Scope of application:

Applicable to clinical units or under the guidance of doctors, for skin disease patients to self-treat vitiligo, psoriasis, pityriasis rosea, eczema skin diseases with ultraviolet irradiation.



KN-4002B1/AB1

KN- 4002 Series

- Open door structure, half-body irradiation treatment can be achieved by opening.
- Under mixed light source configuration, supports independent irradiation of UVA and UVB.
- Time/dose dual mode, convenient for different treatment habits.
- Foldable irradiator, space-saving, easy to store.

Product model	KN-4002B1/AB1		
Treatment area	5200cm ² ±10%		
Lamp configuration	KN-4002B1	UVA*8	
	KN-4002AB1	UVA*4 + UVB*4	



KN-4006AL3/BL3

KN- 4006 Series

- Two light source configurations (UVA, UVB)
- Four groups of irradiation modules can be freely raised and lowered for easy use.
- Touch screen operation, independent switch, convenient and safe.
- Time/dose dual mode, convenient for different treatment habits.

Product model	KN-4006AL3/BL3 Series		
Treatment area	4664cm ² ±10%		
Lamp configuration	KN-4006AL3-4	UVA*16	
	KN-4006BL3-4	UVB*16	

Scope of application:

Applicable to clinical units or under the guidance of doctors, for skin disease patients to self-treat vitiligo, psoriasis, pityriasis rosea, eczema skin diseases with ultraviolet irradiation.



KN-4007A/B

KN- 4007 Series

- Trolley-type head light therapy device
- Helmet design, partition control, convenient for head irradiation.
- Freely retractable cantilever, double-screen countdown prompt.
- With voice prompt function, humanized experience.

Product model	KN-4007A/B		
Treatment area	880cm ² ±10%		
Lamp configuration	KN-4007A	UVA*18	
	KN-4007B	UVB*18	

Scope of application:

Scope of application: Applicable to medical institutions for auxiliary treatment of vitiligo and psoriasis or for skin disease patients to assist in vitiligo and psoriasis under the guidance of doctors.

KN- 5000D

- Independent treatment handle, convenient for irradiation of any part.
- Xenon chloride (XeCl) excimer, pure light source, high intensity.
- Matched with multiple specifications of reduction tips to reduce normal skin pigmentation.
- Equipped with fingerprint management system to realize rapid medical record management function.
- Intensity automatic calibration function to avoid errors and precise treatment.

Light source type	308nm±2nm
Irradiation intensity	60mW/cm ²
Treatment area	20cm±1cm





KN- 5000L

- Independent treatment handle, for irradiation of any part.
- High intensity, short recovery period, suitable for treatment of difficult-to-heal parts.
- Aluminum gallium nitride (AlGaIn) LED light source, high stability, long life.
- Water-cooled circulation heat dissipation system, reduce heat and increase safety.

Light source type	308nm±2nm
Irradiation intensity	≥100mW/cm²
Treatment area	43cm²±10%

Scope of application:
Scope of application: for medical institutions to assist in the treatment of psoriasis and vitiligo.



KN- 5000M

- Adopts nano-scale aluminum gallium nitride (AlGaIn) light-emitting device.
- The light source is pure and high intensity, suitable for treatment of difficult-to-heal parts.
- The light outlet adopts a rectangular design, with a variety of specifications of reduction tips.
- Fingerprint management system, convenient and quick to retrieve user information.

Light source type	308nm±2nm
Irradiation intensity	≥80mW/cm²
Treatment area	38cm²±10%



CN-308E

- Imported UV LED light source, high stability, long life.
- Built-in light source calibration system to ensure accurate dose output.
- High-intensity UV output, with multiple specifications of reduction tips.
- 10.4" color LCD display, easier touch screen operation.
- The treatment head can be handheld for flexible irradiation.

Light source type	308nm±2nm
Irradiation intensity	60mW/cm²
Treatment area	30cm²±10%

Scope of application: Applicable to clinical units or under the guidance of doctors, for skin disease patients to self-treat vitiligo, psoriasis, pityriasis rosea, and eczema skin diseases with UV irradiation.





KN-4101UVA1

- High-power LED light source, high intensity and long light spot life.
- Irradiation area and distance indication, convenient adjustment of treatment position.
- Built-in 5 conventional treatment plans.

Light source type	365nm±3nm
Irradiation intensity	150mW/cm ²
Treatment area	1600cm ² ±10%

Scope of application:
for medical institutions to use for auxiliary treatment of patients with psoriasis, vitiligo and localized scleroderma.



KN-4102UVA1

- High-power LED light source, high intensity, long light spot life.
- Array-type reflective light path design.
- Infrared measurement and positioning treatment distance.
- Touch screen operation, independent switch, convenient and safe.

Light source type	365nm±3nm
Irradiation intensity	120mW/cm ²
Treatment area	1024cm ² ±10%

Scope of application:
Scope of application: For use by medical institutions as an auxiliary treatment for patients with psoriasis, vitiligo, and localized scleroderma.



KN-4103UVA1/4104UVA1

- Adopts GaAlN solid-state cold light source.
- Superconducting material heat-conducting substrate to ensure stable light source.
- Multiple specifications of hoods options, accurately control the irradiation range.
- Suitable for small area treatment, good targeting.

Light source type	365nm±3nm
Irradiation intensity	150mW/cm ²
Treatment area	KN- 4103UVA1 43cm ² ±10% KN- 4104UVA1 4cm ² ±10%



KN-4105UVA1/4106UVA1

- High-power LED light source, uniform and stable light spot.
- Automatic intensity calibration for precise treatment.
- Independent treatment handle, convenient for irradiation of any part.
- Small size and light weight, easy to move and place.

Light source type	365nm±3nm
Irradiation intensity	150mW/cm ²
Treatment area	KN- 4105UVA1 20cm ² ±10% KN- 4106UVA1 30cm ² ±10%



KN-9000A

- Built-in independent operating system, touch screen for easy operation.
- Skin and hair testing and diagnostic function analysis.
- 13-million-pixel camera, can record videos and photos for archiving.
- Medical record management system, convenient for retrieving historical records during follow-up visits.
- Built-in standard medical record library, convenient for comparative analysis of lesion sites.

Light source brightness	0~100%Adjustable
Visual lens magnification	≥2X
Working distance	5cm±1cm

Scope of application:

Used to collect digital images and videos of human skin and hair for medical institutions to conduct detailed magnified observation of human skin and hair.



KN- 9000B

- Small size, light weight, can be carried with you.
- Optional mobile phone camera stand.
- UVA and white LED light sources, three-level light source brightness adjustment.
- Observation window uses a magnifying lens that is not transparent to ultraviolet light.

Light source brightness	L, M, H three levels of brightness adjustable
Visual lens magnification	2x±20%
Working distance	5cm±1cm

Scope of application:

used to increase the operator's viewing angle and facilitate observation of object details.



KN- 9000C

- Small size, light weight, can be carried around.
- LED light source, light source is dispersed in a ring shape, good heat dissipation.
- One-touch switch, easier operation.
- Observation window uses high-tech UV isolation material.

Peak wavelength	365nm±10nm
Irradiation intensity	≥33mW/cm²
Visual lens magnification	2x±20%



KN-4003A/B & AL/BL

- Handheld operation, flexible irradiation area.
- The irradiator is equipped with a reflector inside to improve irradiation efficiency.
- Unique comb design, suitable for scalp treatment.
- Lightweight and portable, cost-effective, suitable for home use.

Light source	Fluorescent tube	
Treatment area	55cm ² ±10%	
Lamp configuration	KN-4003A/B	UVA*1 / UVB*1
	KN-4003AL/BL	UVA*1 / UVB*1

KN-4006A/B & AL/BL

- Adjust the irradiator angle according to treatment needs.
- Multiple configurations available.
- With timing control function.
- Simple operation, suitable for home use.

Light source	Fluorescent tube	
Treatment area	104cm ² ±10%	
Lamp configuration	KN-4006A/B	UVA*2 / UVB*2
	KN-4006AL/BL	UVA*2 / UVB*2

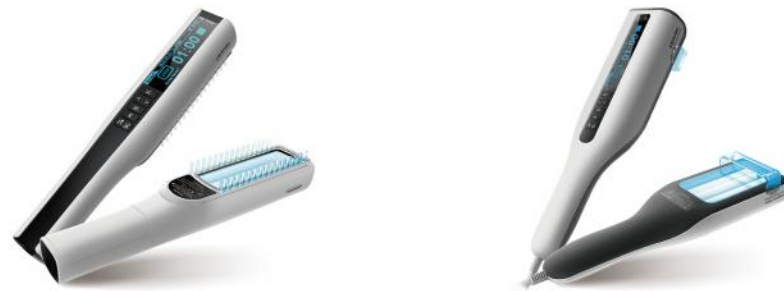
KN-4006A1/B1 & AL2/BL2

- The safety shield made of special optical materials makes treatment safer.
- Multiple configurations available.
- Microcomputer control, can work according to dose or time countdown.
- Small area, Modular ultraviolet.

Light source	Fluorescent tube	
Treatment area	KN-4006A1/B1	540cm ² ±10%
	KN-4006AL2/BL2	1233cm ² ±10%
Lamp configuration	KN-4006A1/B1	UVA*6 / UVB*6
	KN-4006AL2/BL2	UVA*4 / UVB*4

Scope of application:

Used in clinical units or under the guidance of doctors, for skin disease patients to self-treat vitiligo, psoriasis, pityriasis rosea, eczema skin diseases at home.



KN-4003AL2/BL2/BL2D

- Small size, light weight, patients can carry it with them.
- Microcomputer timing function improves the accuracy of treatment.
- Independent PUVA or NB-UVB treatment can be selected.
- Unique comb design can also consider the treatment of scalp.

Product model	KN-4003AL2/BL2/BL2D	
Treatment area	KN-4003AL2/BL2	50cm ² ±10%
	KN-4003BL2D	56cm ² ±10%
Lamp configuration	KN-4003AL2/BL2	UVA*1 / UVB*1
	KN-4003BL2D	UVB*1

KN-4006AL1/BL1/BL1D

- Simple operation, easy to master, more suitable for home treatment.
- Use special optical material protective cover to provide safety protection.
- The instrument is equipped with a positioning device to quickly locate the working distance.
- Can be used with a lazy stand to avoid limb fatigue.

Product model	KN-4006AL1/BL1/BL1D	
Treatment area	KN-4006AL1/BL1	104cm ² ±10%
	KN-4006BL1D	100cm ² ±10%
Lamp configuration	KN-4006AL1/BL1	UVA*2 / UVB*2
	KN-4006BL1D	UVB*2

Scope of application:

Used in clinical units or under the guidance of doctors, for skin disease patients to self-treat vitiligo, psoriasis, pityriasis rosea, eczema skin diseases at home.



CN-308P1

- Child lock protection, safe and worry-free.
- Universal Type-C charging port, convenient life.
- 6 imported Top-level LED light sources provide stable irradiation intensity.
- Touch upgrade, LCD screen operation is intuitive and convenient.

Light source type	LED308
Irradiation intensity	20mW/cm ²
Irradiation area	2.5cm ²

CN-308P2

- Dual-wing strong heat dissipation, powerful performance
- 30° micro-tilt R angle, easy to fit all parts of the body
- Small size, light weight, easy to move and carry
- 6 imported Top-level LED light sources provide stable irradiation intensity

Light source type	LED308
Irradiation intensity	25mW/cm ²
Irradiation area	2.5cm ²

CN-308P3

- 30° micro-tilt R angle, easy to fit all parts of the body
- 6 imported Top-level LED light sources provide stable irradiation intensity
- Touch upgrade, LCD screen operation is intuitive and convenient
- Intelligent prompts, instant feedback

Light source type	LED308
Irradiation intensity	30mW/cm ²
Irradiation area	2.5cm ²

Scope of application:

It is suitable for medical institutions to use as an auxiliary treatment for vitiligo, psoriasis, eczema, and atopic dermatitis, and can also be used by patients with skin diseases to treat themselves at home under the guidance of a doctor.



CN-308P4

- Intelligent prompts, instant feedback
- 9 imported Top-level LED light sources provide stable irradiation intensity
- Touch upgrade, LCD screen operation is intuitive and convenient
- Small size, light weight, easy to carry

Light source type	LED308
Irradiation intensity	40mW/cm ²
Irradiation area	2.5cm ²

CN-308P5

- Intelligent prompts, instant feedback
- 9 imported Top-level LED light sources provide stable irradiation intensity
- Touch upgrade, LCD screen operation is intuitive and convenient
- Time/dose dual treatment mode

Light source type	LED308
Irradiation intensity	50mW/cm ²
Irradiation area	2.5cm ²

CN-308P6

- Intelligent prompts, instant feedback
- 9 imported Top-level LED light sources provide stable irradiation intensity
- Time/dose dual treatment mode
- LCD intelligent rotating touch screen

Light source type	LED308
Irradiation intensity	60mW/cm ²
Irradiation area	2.5cm ²

Scope of application:

It is suitable for medical institutions to use as an auxiliary treatment for vitiligo, psoriasis, eczema, and atopic dermatitis, and can also be used by patients with skin diseases to treat themselves at home under the guidance of a doctor.



KN-4003B1

- Special UV LED light source.
- Small size, light weight, easy to carry it.
- Strong targeting, simple operation, suitable for home treatment.
- Built-in MED test program, convenient for users to test.

Light source type	LED308
Irradiation intensity	25mW/cm ²
Irradiation area	4.5cm ² ± 10%



KN-4003B2

- Special UV LED as light source.
- Strong targeting, suitable for home treatment.
- Built-in MED test program, convenient for users to test.
- OLED display, two treatment modes dose/time optional.

Light source type	LED308
Irradiation intensity	20mW/cm ²
Irradiation area	4.5cm ² ± 10%



KN-5000G

- High-intensity LED UV light, longer light source life span.
- Suitable for small area treatment, good targeting.
- Flexible treatment handle can accurately control the exposure range.
- Multi-specification reduction tips.

Light source type	LED308
Irradiation intensity	50mW/cm ²
Irradiation area	22cm ² ± 10%



KN-5000H

- High-intensity LED ultraviolet light, longer light source life span.
- Suitable for small area treatment, good targeting.
- Flexible treatment handle can accurately control the exposure range.
- Equipped with a bracket, easy to place.

Light source type	LED308
Irradiation intensity	35mW/cm ²
Irradiation area	12cm ² ± 10%



KN-5000K

- High-intensity LED ultraviolet light, longer light source life span.
- Suitable for small area treatment, good targeting.
- Built-in MED test program, convenient for users to test.
- Dose/time two treatment modes optional.

Light source type	LED308
Irradiation intensity	45mW/cm ²
Irradiation area	12cm ² ± 10%

KN-4003B1/B2 Scope of application: It is suitable for use in clinical units or under the guidance of a doctor, for skin disease patients to treat vitiligo, psoriasis, roseola, and eczema at home through ultraviolet irradiation.

KN-5000G Scope of application: It is suitable for clinical units or under the guidance of doctors, for skin disease patients to treat vitiligo, psoriasis, roseola, eczema and other skin diseases by ultraviolet irradiation at home.

Scope of application: It is suitable for clinical units or under the guidance of doctors, for skin disease patients to treat vitiligo, psoriasis, roseola, eczema and other skin diseases by ultraviolet irradiation at home.



CN-308A

- Utilizes imported light source with matrix arrangement, providing high intensity.
- Compact size and lightweight design, allowing patients to carry it easily.
- Strong targeting capability, and flexible irradiation site.
- Built-in MED (Minimum Erythema Dose) test program for convenient self-testing by users.

Light Source type	LED308
Irradiation intensity	12.5mW/cm ²
Irradiation area	33cm ² ± 10%

Scope of application:
Designed for use in clinics or under medical guidance, enabling patients with skin disorders such as vitiligo, psoriasis, pityriasis rosea, and eczema to perform ultraviolet irradiation treatments at home.



CN-308B

- Utilizes imported light source with matrix arrangement, providing high intensity.
- Compact size and lightweight design, allowing patients to carry it easily.
- Strong targeting capability, and flexible irradiation site.
- Offers treatment modes based on dose or time.

Light Source type	LED308
Irradiation intensity	15mW/cm ²
Irradiation area	33cm ² ± 10%



KN-4003B3

- Compact size , allowing patients to carry it easily.
- Utilizes a specialized LED light source with high stability and long lifespan.
- Streamlined and stylish appearance, exquisitely designed for portability.
- Features a Minimum Erythema Dose (MED) test function.

Light Source type	LED308
Irradiation intensity	30mW/cm ²
Irradiation area	8cm ²

Scope of application:
Used in clinical units or under the guidance of a doctor, for skin disease patients to treat vitiligo, psoriasis, rosacea, and eczema at home through ultraviolet radiation.



KN-4003B4

- Utilizes a specialized LED light source with high stability and long lifespan.
- Strong targeting capability and user-friendly operation, suitable for home treatment.
- Offers treatment modes based on dose or time.
- Equipped with a Type-C interface for easy operation and extended battery life.

Light Source type	LED308
Irradiation intensity	40mW/cm ²
Irradiation area	8cm ²



CN-308C

- Medical standard, short treatment period.
- Flexible treatment handle for precise control of the irradiation range.
- Two treatment modes (dose and time).
- Built-in MED (Minimum Erythema Dose) test program for convenient self-testing by users.

Light Source type	LED308
Irradiation intensity	50mW/cm ²
Irradiation area	20cm ²

Scope of application:
Designed for use in medical institutions to assist in the treatment of vitiligo and psoriasis. It can also be used by patients for self-treatment at home under medical guidance.



KN-5000C

- High energy output and short treatment cycles, reducing patient treatment time.
- Dual-channel heat dissipation technology for improved performance.
- Strong targeting capability and easy operation, suitable for home treatment.
- Includes a Minimum Erythema Dose (MED) test function.

Light Source type	XeCl
Irradiation intensity	≥50mW/cm ²
Irradiation area	20cm ² ±10%

Scope of application:
Designed for use in medical institutions to assist in the treatment of vitiligo and psoriasis. It can also be used by patients for self-treatment at home under medical guidance.



KN-7000A

- High-power LED solid-state cold light source with matrix arrangement, delivering high intensity.
- A variety of wavelength light sources are available to meet clinical treatment needs.
- Large irradiation area with uniform light spots for precise treatment of targeted areas.
- Features both continuous and pulse irradiation working modes.

Number of LEDs	1820
Irradiation area	800cm ² ±10%
Irradiation distance	6cm±1cm



KN-7000B

- High-power LED solid-state cold light source with matrix arrangement, delivering high intensity.
- The light source can be extended according to the treatment area, enabling large-area irradiation.
- Multiple light sources are available to achieve different treatment effects.
- Stores five commonly used treatment plans for easy operation.

Number of LEDs	660
Irradiation area	510cm ² ±10%
Irradiation distance	6cm±1cm



KN-7000D

- High-power SMD LED light source (SMD) with higher intensity.
- Combines three light sources (red, blue, and yellow) in one device, meeting diverse clinical needs.
- Real-time intensity detection function.
- Two working modes: continuous irradiation or pulse irradiation.

Number of LEDs	1100
Irradiation area	850cm ² ±10%
Irradiation distance	6cm±1cm

Scope of application: Used in medical institutions. Red/yellow/blue light is used to treat inflammatory acne, eliminate inflammation, and promote skin wound healing; yellow light (590nm)/infrared light (830nm) is used to promote wound healing (surgical wounds, bite wounds, infected wounds, skin wounds) and relieve wound pain; red/green light is used to treat inflammatory acne.



KN-7000L/L-F

- High-power SMD LED light source arranged in a matrix.
- Multi-light source custom cycle irradiation mode for flexible control.
- AI intelligent temperature monitoring system, ensuring safe treatment.
- Combines five light sources in one device, allowing free combination for diversified choices.
- Features a 10.4-inch full touch screen with a user-friendly GUI design.

Number of LEDs	1400	
Irradiation area	900cm ² ±10%	
Peak Wavelength	Red light	633nm±10nm
	Blue light	417nm±10nm
	Yellow light	590nm±10nm
	Green light	525nm±10nm(7000L-F)
	Infrared light	830nm±10nm

Scope of application:

Used in medical institutions. Red/yellow/blue light is used to treat inflammatory acne, eliminate inflammation, and promote skin wound healing; yellow light (590nm)/infrared light (830nm) is used to promote wound healing (surgical wounds, bite wounds, infected wounds, skin wounds) and relieve wound pain; red/green light is used to treat inflammatory acne.



KN-7000A1

- High-purity, high-power integrated chip-type solid cold light source.
- Light source connected to a free telescopic lifting arm.
- Pre-stored 4 treatment plans with one-click selection for easy operation.
- Equipped with an efficient heat dissipation system to extend service life.

Light source type	High power red and blue light
Irradiation area	350cm ² ±10%
Irradiation distance	10cm±1cm



KN-7000A2

- High-purity, high-power integrated chip-type solid cold light source.
- Features a positioning indicator rod to ensure effective irradiation distance.
- Pre-stored 4 treatment plans with one-click selection for easy operation.
- Adjustable light source intensity to meet diverse clinical needs.

Light source type	High power red and blue light
Irradiation area	250cm ² ±10%
Irradiation distance	10cm±1cm



KN-7000A4

- COB-packaged LED light source with high density and uniform light emission.
- Variable grating to adjust the spot size for precise treatment.
- Efficient heat dissipation system to ensure the longevity of the light source.
- Free-style telescopic bracket design with adjustable irradiation angles.

Light source type	High power red light
Irradiation area	50cm ² ±10%
Irradiation distance	5cm±1cm



KN-7000C1

- High-power LED light source with high intensity.
- Unique optical technology for uniform light spots and significant therapeutic effects.
- Additional positioning indicator rod to ensure effective irradiation distance.
- With timer countdown function.

Light source type	High power red light
Irradiation area	30cm ² ±10%
Irradiation distance	10cm±1cm



KN-7000C

- Streamlined, fashionable, and exquisite design for portability.
- Offers 1, 2, 3, 5 minutes, and continuous working modes.
- Features both continuous / pulse working modes.
- Equipped with 48 LED cold light sources in a dot matrix arrangement.

Light source type	48
Irradiation area	26cm ² ±10%
Irradiation distance	2cm±1cm



KN-7000C2

- Compact and lightweight design for handheld operation and portability.
- Non-invasive operation with no damage to skin cells and no side effects.
- Precise targeted irradiation for professional treatment of small-area skin problems.
- Utilizes 8 chip-level LEDs in a matrix arrangement for balanced light energy.

Light source type	8
Irradiation area	4cm ² ±10%
Irradiation distance	2cm±1cm

Scope of application:
Suitable for the treatment of inflammatory acne, eliminating inflammation and promoting skin wound healing.

Scope of application:
Suitable for the treatment of inflammatory acne, eliminating inflammation and promoting skin wound healing.



KN-8000A

- Utilizes LLLT (Low-Level Laser Therapy) low-energy soft laser irradiation technology, ensuring safety and reliability.
- Divided into 5 independently controlled treatment panels based on the physiological structure of the head.
- Laser light sources are arranged in a dot matrix for more balanced spot distribution.
- Equipped with a working distance positioning device to ensure effective irradiation distance.

Number of lasers	424
Irradiation area	900cm ² ±10%
Irradiation distance	4cm±1cm

KN-8000A **Scope of application:** Suitable for head irradiation to promote hair growth.
 KN-8000B/C/D/E **Scope of application:** Used to promote hair growth in male patients with androgenic alopecia.



KN-8000B/C/D/E

- Utilizes LLLT (Low-Level Laser Therapy) low-energy soft laser irradiation technology.
- Laser light sources are arranged in a dot matrix to promote rapid hair growth.
- Features a helmet-style design, compact size, lightweight, and easy to use.
- Incorporates humanized head fixation technology, suitable for individuals of different sizes.

Type of light source	650nm Low-Level Laser Therapy	
Irradiation area	370cm ² ±10%	
Number of lasers	KN-8000B	204 lasers
	KN-8000C	80 lasers + 30 red LEDs
	KN-8000D	21 lasers + 30 red LEDs
	KN-8000E	81 lasers



KN-8000A1

- Made of high thermal conductivity material for reliable heat dissipation, ensuring no heat during hair growth treatment.
- Constant power drive design for continuous, stable, and consistent output.
- Combines perfect body industrial design with both artistic and technological elements.
- Treatment panel partition control system for targeted and efficient treatment.
- Equipped with 300pcs 3R-level lasers to reach more scalp hair follicles.

Number of lasers	300
Irradiation area	900cm ² ±10%
Irradiation distance	4cm±1cm

Scope of application: Used to promote hair growth in male patients with androgenic alopecia.





KN-8000A2

HEART WITHOUT BOUNDARIES
RE-EXPLORING THE BOUNDARIES
OF HAIR GROWTH SCIENCE

The industry's first second-generation LLLT (Low-Level Laser Therapy) medical hair growth system. Equipped with the Kernel semiconductor laser technology research and development platform, concentrating on numerous industry-first innovative technologies. Full-chain innovation in hair growth equipment hardware and software depth, interactive friendliness, and service accessibility, achieving a comprehensive leap in equipment performance.



Scope of application: Used to promote hair growth in male patients with androgenic alopecia.

KN-8000A2/A3

- Utilizes LLLT low-energy soft laser irradiation, with the irradiation area divided into zones for lighting control.
- High thermal conductivity materials for efficient heat transfer, maximizing the lifespan of the light source.
- Features a 12.1-inch LCD ultra-large touch screen.
- Remote control and dual-end control capabilities.
- Equipped with an electric lifting function for multi-position, highly adaptive use.
- Incorporates core innovations, including the BASP grading method and hardware integration.



Irradiation area	KN-8000A2	900cm ² ±10%
	KN-8000A3	Laser treatment head:1000cm ² ±10% Red and blue light therapy head:900cm ² ±1%
Light source type	KN-8000A2	Red+ infrared (laser) + red+ blue (light)
	KN-8000A3	Laser treatment head: red laser + infrared laser Red and blue light treatment head: red light + blue light
Number of lasers	KN-8000A2	334 red lasers + 101 infrared lasers 816 red lasers + 408 blue lasers
	KN-8000A3	384 red lasers + 120 infrared lasers 724 red lasers + 356 blue lasers

Scope of application: Mainly used for analgesia and anti-inflammation, promoting tissue repair, promoting hair growth, stimulating the activity of multiple enzymes and increasing skin elasticity and firmness, used to treat allergic dermatitis and inflammatory acne.



KN-8000A3

HAIR GROWTH SYSTEM

INTELLIGENT HOME-USE
MEDICAL DEVICES

02 INTELLIGENT HOME-USE MEDICAL DEVICES

LIGHT SOURCE AND
TECHNOLOGY

HOME PELVIC FLOOR MUSCLE TRAINING | MAGNETIC STIMULATION AND ELECTRICAL STIMULATION
FAMILY EYE HEALTH MANAGEMENT | FAMILY HEALTH MANAGEMENT

NASAL IRRIGATION AND LASER THERAPY DEVICE



Children: KN-3110L
(Remark: Customized color)



Adult: KN-3112L



Adult: KN-3111L
(Remark: Available in Pink or Blue)

KN-3110/3111/3112/3110L/3111L/3112L

- Combines water and light therapy in one device, featuring spray flushing and 650nm laser for anti-inflammatory effects.
- Utilizes Venturi atomization technology for fine spray and deep cleaning.
- 15/30/45min intelligent timing mode.
- Adjustable spray rate with three levels: mild, strong, and pulse.
- Small size and light weight, patients can carry it with them.
- Humanized double-headed laser nose clip design, wearing more securely and comfortably.

Product model	KN-3110/3110L	KN-3111/3111L	KN-3112/3112L
Water tank capacity	15±3mL	18±3mL	25±3mL
Waterproof level	650nm±5nm (Applicable: KN-3110L/3111L/3112L)		

Scope of application:

KN-3110/KN-3111/KN-3112: Used with nasal cleaning solution to rinse the nasal cavity.
KN-3110L/KN-3111L/KN-3112L:

Flushing part: Used for nasal cavity flushing. Laser part: Used for local irradiation of the nasal cavity, providing anti-inflammatory and pain-relief effects.



KN-3113L

- Special laser light source as a therapeutic light source, offering high stability and long life.
- Handheld operation, compact and lightweight, suitable for multiple scenarios.
- Adjustable irradiation time and output power to meet different clinical needs.
- Humanized double-headed laser nose clip design, ensuring a firmer and more comfortable fit.

Laser Wavelength	650nm±5nm
Pre-stored Output Power	5mW, 3.75mW, 2.5mW
Timer	0-45min

Scope of application:

KN-3113L: Used for local irradiation of the nasal cavity, providing anti-inflammatory and pain-relief effects.



KN-6211/6212

- Continuously monitors body temperature, providing intuitive data insights.
- Uses a high-precision temperature sensor and a large-size, high-thermal conductivity temperature sensor.
- Enables remote body temperature monitoring, allowing temperature changes to be tracked at any time.
- Multi-function base with both Bluetooth and Wi-Fi capabilities.

Structural form	Wearable
Display mode	LCD
Protection level	Main unit: IPX6; Charging box: IP22



KN-6210

- Continuously monitors body temperature, providing intuitive data insights.
- Uses a high-precision temperature sensor and a large-size, high-thermal conductivity thermometer.
- Enables remote body temperature monitoring, allowing temperature changes to be tracked at any time.
- Features settable high and low-temperature reminder functions.

Structural form	Wearable
Power supply time	4000
Operation mode	Continuous operation

Scope of Application:

It is used for measuring human body temperature in households and medical departments.



CN-1613

- Supports wireless printing and APP-side data exchange to improve diagnosis and treatment efficiency.
- Equipped with measurement data storage, viewing, and printing functions.
- Handheld single support structure, balancing professionalism and portability.
- Features error measurement prompts and left/right eye intelligent recognition functions.

Structural form	Single support
Measurement range	3-70mmHg
Display mode	Color screen

Scope of Application:

Applicable for measuring intraocular pressure, including preliminary detection and screening for glaucoma.



CN-1612

- Enables autonomous measurement of intraocular pressure, making it easy to operate.
- Handheld double support structure, ensuring stability and comfort.
- Color large screen for better visual effects.
- Features error measurement prompts and left/right eye intelligent recognition functions.

Structural form	Double support
Power supply time	3-70mmHg
Operation mode	Large color screen



KN-2612ESeries

- Dual assessment modes: pressure assessment + surface electromyography assessment.
- Independent channels, pelvic floor + postpartum rehabilitation treatment mode.
- Kegel training can be used, with abdominal muscle monitoring function.
- OLED screen display, both APP and stand-alone operation.

Stimulation intensity	0-90mA adjustable
Output frequency	1Hz-300Hz
Output pulse width	20μs ~ 600μs

KN-2615ESeries

- Integrated electrode structure
- Charging and disinfection compartment to improve safety
- Surface electromyography assessment, APP intelligent operation
- Kegel training can be used, with abdominal muscle monitoring function.

Stimulation intensity	0-90mA adjustable
Output frequency	1Hz-300Hz
Output pulse width	20μs ~ 500μs

Scope of Application:

Collect, analyze, and evaluate surface electromyographic signals of the patient's pelvic floor muscles. Treat pelvic floor dysfunction and sexual dysfunction through neuromuscular electrical stimulation, electromyographic triggering electrical stimulation, and electromyographic biofeedback. Pelvic floor health care.** Prevent pelvic floor dysfunction and improve pelvic floor muscle health.



KN-2610M Series integrated

- Compact size with high energy output.
- Ultra-silent operation for no disturbance.



KN-2612M Series Division type

- Deeply focused magnetic field lines with triple safety protection.
- Provides a comfortable user experience.

Stimulation frequency	0-60Hz multi-frequency solution
Product power	Transient 4000VA/Steady state 1500VA
Magnetic field strength	Up to 6T

Scope of application: Stimulate the central nervous system and peripheral nerves of the human body, used to improve the functions of the central nervous system and peripheral nerves, and used as an auxiliary treatment for pelvic floor nerve injury diseases.

MEDICAL
AESTHETICS



LIGHT SOURCE AND
TECHNOLOGY

HIGH VALUE MEDICAL BEAUTY | REFLECTIVE CONFOCAL OPTICS
RADIOFREQUENCY ULTRASOUND BEAUTY | SUPERFICIAL X-RAY RADIATION THERAPY

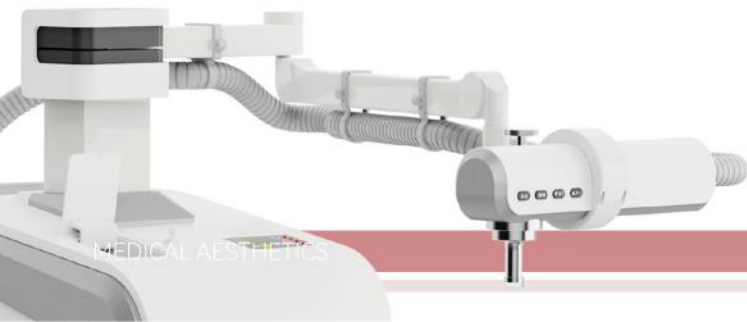
03

MEDICAL
AESTHETICS

XT-5600

SUPERFICIAL X-RAY RADIATION THERAPY SYSTEM

SUPERFICIAL RADIATION | DOMESTIC SUBSTITUTION
RADIOTHERAPY FOR SKIN DISEASES



TREATMENT PRINCIPLE

The free charges generated by the cathode of the X-ray tube in the X-ray generating device are accelerated by the high voltage produced by the high-voltage generator and then collide with the target, interacting with the anode target to emit X-rays. The X-rays are directed through a beam limiter to irradiate epithelial cell cancer and keloids. X-rays are high-energy electromagnetic waves that can penetrate matter and produce ionizing radiation effects, directly killing cancer cells or inhibiting their growth.



INNOVATIVE TREATMENT HEAD DESIGN

Safe and accurate X-ray emission device, equipped with various specifications of beam limiters



EQUIPPED WITH COLLABORATIVE ROBOT SYSTEM

High-performance motion positioning mechanism, used for movement and positioning of the treatment head, full-body treatment



FULLY AUTOMATIC IDENTIFICATION OF BEAM LIMITER FUNCTION

Replace different beam limiters before treatment, and the host will automatically identify them



HIGH QUALITY X-RAY TUBE

The application of internationally leading X-ray tube technology, high pressure resistance, ensures stable ray quality



SMART HD CONSOLE

12.1-inch touch panel, equipped with safety interlock + key switch + time adjustment device





XT-5601

SUPERFICIAL X-RAY RADIATION THERAPY SYSTEM

SUPERFICIAL RADIATION | DOMESTIC SUBSTITUTION
RADIOTHERAPY FOR SKIN DISEASES



INNOVATIVE TREATMENT HEAD DESIGN

Safe and accurate X-ray emission device, equipped with various specifications of beam limiters



EQUIPPED WITH COLLABORATIVE ROBOT SYSTEM

High-performance motion positioning mechanism, used for movement and positioning of the treatment head, full-body treatment



HIGH PERFORMANCE TUBE

High power, high heat capacity bulb tube, to meet the actual operation of continuous, high throughput clinical treatment needs



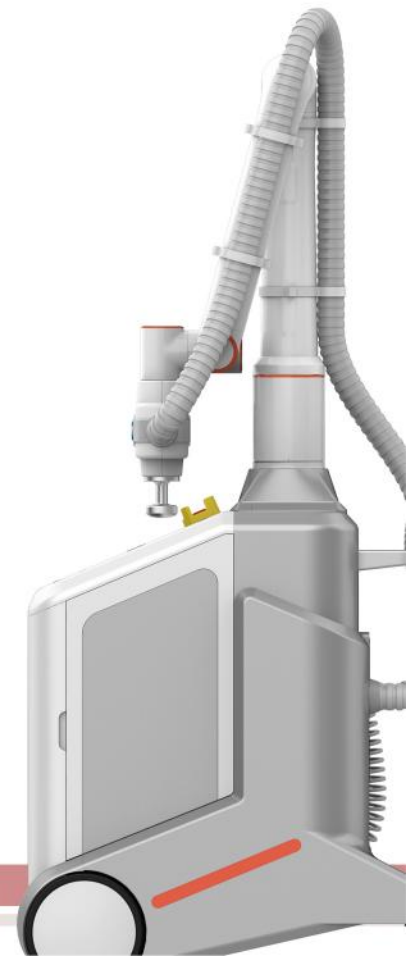
HIGH QUALITY X-RAY TUBE

The application of internationally leading X-ray tube technology, high pressure resistance, ensures stable ray quality



SMART HD CONSOLE

12.1-inch touch panel, equipped with safety interlock + key switch + time adjustment device





RCM-9503

THE FIRST SKIN CT(RCM) IN
CHINA WITH THE INDEPENDENT
INTELLECTUAL PROPERTY

IN VIVO
REFLECTANCE CONFOCAL MICROSCOPY

THE PRINCIPLES OF RCM SYSTEM

In Vivo Reflectance Confocal Microscopy (RCM) In Vivo Reflectance Confocal Microscopy (RCM) is based on the principle of optical confocal imaging. It utilizes the reflected light from a low-energy laser source focused by the system on specific layers of the skin to generate images, provides non-invasive imaging of skin lesions at cellular-level magnification and ultra-high resolution, demonstrating good consistency with dermatopathological examinations and effectively reducing unnecessary biopsies.

RCM generates images with varying degrees of brightness based on the differences in refractive index of microstructures within the skin tissue. Due to its cross-sectional imaging characteristics, it enables layer-by-layer scanning of the skin from superficial to deep, similar to Computed Tomography (CT), and is thus figuratively referred to as "Skin CT."

EXCELLENT IMAGING EXQUISITE CRAFTSMANSHIP

-  SOFTWARE
EMBEDDED ALGORITHM
-  NON-INVASIVE
CELL-LEVEL DIAGNOSIS
-  STRONG BREAKTHROUGH
IN IMAGING PERFORMANCE
-  HIGH-PRECISION
SCANNING CAPABILITY



GLOBAL STRATEGY

Our products are trusted and used by more than 16,000 medical institutions around the world

OWNED ABROAD

8 8 overseas representative offices

4 4 overseas branches

**IN THE COUNTRY
THERE ARE MORE THAN**

30 30 provinces and autonomous regions

