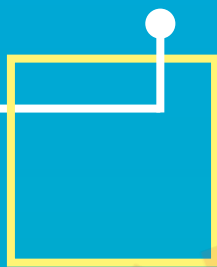




湖北新阳特种纤维股份有限公司  
HUBEI XINYANG SPECIAL FIBER CO., LTD



试用水印

**EXPERT OF ACETATE TOW**

■ **SINCE 2002!**

# COMPANY BRIEF

Established in October 2002. Our company, Xinyang is located in Dangyang City, Hubei Province, central China. The company covers an area of 100 acres. it mainly researches, produces and sells acetate tow.

We have been researching the field of acetate fiber tow since 2002 and have been listed as the national "Torch Plan" and the "High-tech Industrialization Demonstration Project" of Hubei Province. Relying on its own scientific research capabilities and cooperating with famous universities and research institutes, the company built the first "special acetate fiber tow" production line in China based on domestic technology and equipment in 2004. It is the earliest non-state-owned acetate fiber tow manufacturer in China.





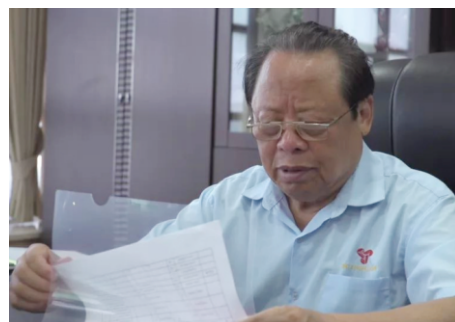


The company always adheres to being close to customers and realizing product innovation and improvement. So far, 14 patents have been obtained. Adhering to the market orientation, Our products have been sold to major markets around the world, and stable cooperative relationships with major cigarette and filter rods factories in the market have been established.



# TO OUR CUSTOMERS

Xinyang always believe that quality is the life of the enterprise, and innovation is the driving force of the enterprise's development. All of our employees work together to create a responsible enterprise. We will continue to improve product strength and improve market network, and develop together with global customers!



(Ye Zhaoqing, The boss of xinyang. He has been awarded the titles of "National Township Entrepreneur", "Spark Plan Model", "Outstanding Rural Talent in Hubei Province", "Star Township Entrepreneur", "Spark Entrepreneur", "Yichang City Model".

## Enterprise Spirit

*Start the business with integrity , persist in development;  
Make resolution depend on the actual situation;  
Pursue excellence and innovate intelligently.*





# WHY US?

## Our Advantages

- More than 20 years of experience in production and service in the acetate tow field ensure quality and service.
- Co-building laboratories with materials and textile colleges of some important universities for continuous research and development.
- With an annual production capacity of 30,000 tons, ensure sufficient supply.
- Insisting on solving problems and improving product quality, ensure our customers' confidence in cooperation with us.
- Professional team for export, and understanding the request of oversea markets.
- Convenient transportation, close to the Yangtze River and national railway station, the China-Europe Express and railway-sea combined transport ensure quick logistics to the market.
- Owning our own raw material factory, we can better control quality and cost.

## Our Partners



# THE PRODUCTION PROCESS OF ACETATE TOW



1)Material (Acetate flake)



2)Recycle



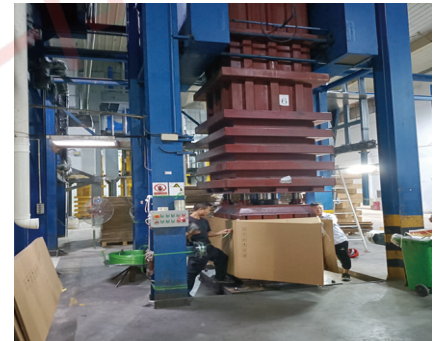
3)Spining



4)Crimp



5)Drying



6)Packing

## The Applications Of Acetate Tow



1)Cigarette filter material:



2) Fabric for traditional garment:

## The Advantages Of Acetate Tow

So far, there are three main tow materials for cigarette filter materials, PP tow (Polypropylene) , Acetate tow (Cellulose diacetate) and PLA tow (Polylactic acid fiber), as the best material among all current cigarette filter materials, acetate tow has irreplaceable advantages.

- 1)For health, acetate fiber and PLA fiber are healthier when heated. PP, as a petrochemical product, is not good for human health.
- 2)For smoking feeling, cigarettes with acetate fiber as filter tips have better taste and other experiences.
- 3)For production process, acetate tow is very suitable in the production of various new designed filter and complex filter, including capsule filter, No burn-heated cigarettes, etc. And it is more suitable for achieving the performance of the filter demands.
- 4) For production efficiency, most of factories use high-speed filter machines which are for acetate tow processing design. Using acetate tow is more efficient and ensure the filter quality.

## What We Supply

The main items we produce are:

- 2.5Y30000,

- 3.0Y30000,

- 3.0Y35000,

- 3.3Y37000,

- 4.0Y35000,

- 5.0Y30000,

- 6.0Y17000.



We can produce various specifications with single fiber 2.2--15 and total fiber 15000--40000, and can develop according to customer needs.

Loading :  
23.5-25MT per 40HQ

We not only supply products  
but also provide solutions



试用水印