

# Shreeji Enterprise

An ISO 9001:2015 certified company

2, Rani Industrial, Vavdi, near Krishna Park  
Hotel, B/h. Parin Furniture, National  
Highway Rajkot-Gondal, Rajkot – 360004  
(GUJ) INDIA

Mob- +91 9879074176

Email :

[srj.chirag@yahoo.com](mailto:srj.chirag@yahoo.com)

[info@shreejienterprise.co.in](mailto:info@shreejienterprise.co.in)

Web : [www.shreejienterprise.co.in](http://www.shreejienterprise.co.in)

**A quality manufacturer of all types of  
components of forging flanges , forging  
Ring & investment castings & Bar stock  
Components & Valve-pump parts**



# INTRODUCTION

- **Shreeji Enterprise** (A Partnership Company), Valve-pump & Engineering component & Die Mould / Pattern manufacturing unit was incorporated in the year 2003 with aim to cater Quality Product requirement of their customers. Company has state of art technological work shop for manufacturing facilitated with 15-CNC & 14-VMC Machine with standard room inspection & measuring facility. Company has its own conventional Shop for Pre machining facilitate with 6 Lathes and 3 drilling machines and others.

# QUALITY

- We are Specialized in development of best Class Quality Stainless Steel, Mild Steel and Aluminium Parts, Components and Manual, semi & fully automatic Investment casting mould, Impeller, diffuser propeller, Diffuser Die/Pattern designing and manufacturing and machining(our expertise and prior area).
- Quality and perfection has been the foundation stones of success for the company. We are Certified with **ISO 9001-2015 Quality** standard organization.
- We use regular quality control measures of all critical operations, to nurture quality at all levels of the business.
- We not only emphasize the need for quality in all our operations, but we constantly strive to follow and improve our quality standards.

# INFRASTRUCTURE

---

- **Facility : 9600 Sq. Feet building area in near of Rajkot**
- **Manpower : Team of Highly qualified & Individually skilled engineers.  
(Total 95 employees)**
- **Software & Hardware : CAD/CAM software Delcam  
CAD Software - Autocad**



# Our Strength

- **Full Finished Components of forging flanges , forging rings & investment casting & bar stock Components & Valve pump parts.**
- All type precision Manual, semi & fully automatic Investment casting mould mfg.
- Supporting in Precision Parts & Developed parts mfg.
- Mechanical design & Prototype Development.
- Technical support to our vendor & customer.
- Impeller, diffuser propeller, Diffuser Die/Pattern designing and mfg and machining(our expertise and prior area)

# PRODUCT RANGE

- 
- **Bar Stock & Hardware Parts**
  - **Bar Stock Valve Parts**
  - **Forging Ring, Ring Rolling Parts**
  - **Impeller-casing-bowl Investment Casting Parts**
  - **Pipe & Fitting Parts**
  - **Pipe-flanges & Forging-flanges**
  - **All Types Of Still –Flange**
  - **Submersible-pump Parts**
  - **Valve & Pump Parts**



Bar Stock & Hardware Parts

Bar Stock Valve Parts







**Submersible-pump Parts**

**Valve & Pump Parts**







**Impeller-casing-bowl  
Investment Casting  
Parts**



## Forging Ring, Ring Rolling Parts



## Pipe & Fitting Parts



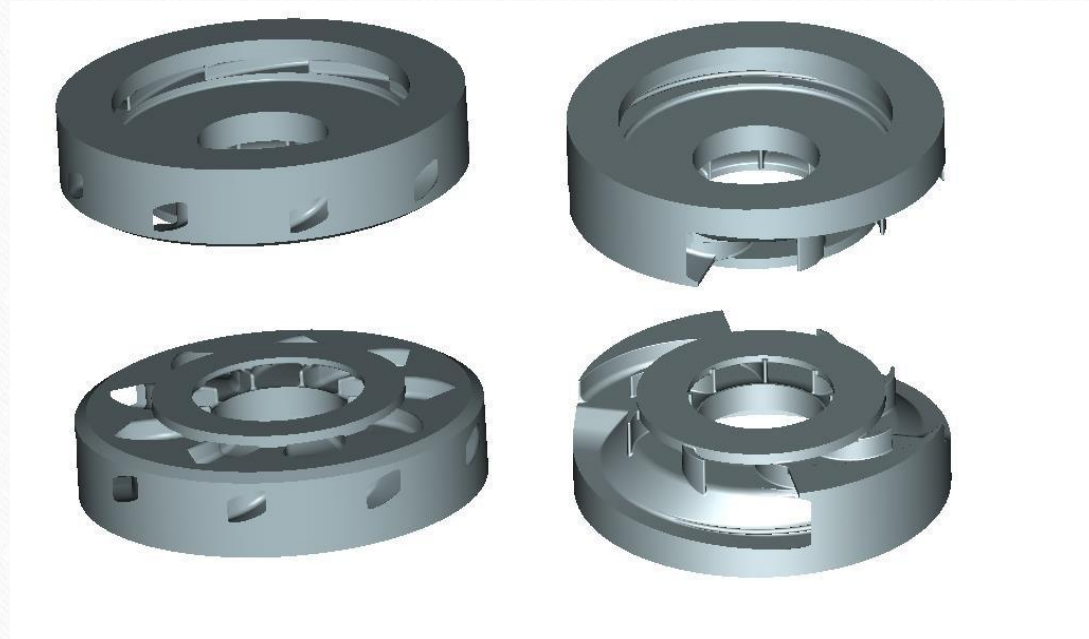


Pipe Flanges



Steel (SS - MS) - flanges

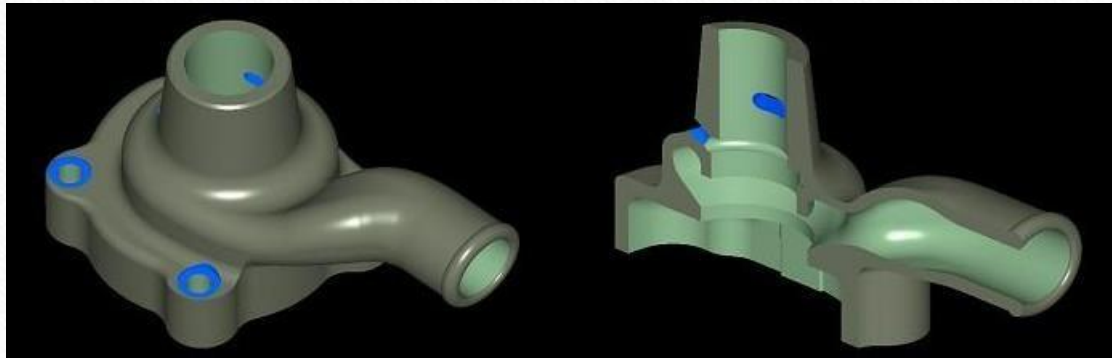




Diffuser Die  
For Investment Cating



Spiral Die  
For Investment Casting



Pump Part Die  
For Investment Casting



Pump & Casting Die  
For Investment Casting

# VALUED CUSTOMERS

---

- **Boehler EINBAUTEILE GHBH – GERMANY**
- **Linit Exports – Mumbai**
- **Nikki Saw (ACD) – Baroda (USA Based Company)**
- **ISRO – Govt. of India Organization**
- **WPIL Limited Ghaziabad**
- **Singla Motors – Karnal - Haryana**
- **Phoenix Maccano – Pune**
- **Nova Technocast – Rajkot**
- **Amtech Investment Cast – Rajkot**
- **Rotex Automation – Baroda**
- **Exxon International – Mumbai**
- **Mekatronics – pune**
- **Catalyst – Jamshedpur**



# THANK YOU

---

**Please Feel Free to Contact us for your valuable inquiry @**

**Email : [srj.chirag@yahoo.com](mailto:srj.chirag@yahoo.com)**

**[info@shreejienterprise.co.in](mailto:info@shreejienterprise.co.in)**

**[www.shreejienterprise.co.in](http://www.shreejienterprise.co.in)**

**Works :**

**Shreeji Enterprise**

**2, Rani Industrial Area, Vavdi(near Krishna Park Hotel), B/h. Parin Furniture, National  
Highway Rajkot-Gondal, Rajkot – 360 004(GUJ)-INDIA**

**Cell : +91 9879074176**