



Scan the QR Code to Learn More

Zhongshan Vastfafa Intelligent Technology Co.,Ltd.

Address: Building B, #19 Yixian Road, Torch Development Zone, Zhongshan City, Guangdong Province of China.

Tel: +86-760-88222309 Fax: +86-760-87963922

E-mail: [andy@vastfafa.com.cn](mailto:andy@vastfafa.com.cn)

Web: [www.vastfafa.com](http://www.vastfafa.com)



Zhongshan Vastfafa Intelligent Technology Co.,Ltd.



# COMPANY ADVANTAGE

## A Factory Introduction

VASTFAFA

Fonded in 2018, Vastfafa has been delighting customers worldwide as the full-line supplier of products including Surge Protection, Master/Slave power strips, WiFi Control Socket, Power strip with USB charge, Power Extension Cable, Power travel adaptor, etc.

We have abundant experience of all kinds of socket, as well as strong technology power, advanced equipments, full testing measures, high product qualities and service, which win satisfaction and trust from many customers.

### Always Focused on Quality

Based on outstanding quality, advanced technology philosophy, our customers are all round the world. Focus on special requirements, we can have tailor made service, reduce customer cost at maximum level to meet customer needs, to produce safe, energy saving and intelligent products.

## B Factory Strength

VASTFAFA

200+

Number of Employees

8,000+

Factory Area

30+

Injection Machine

10

R & D

6

Assembling Line

6

Quality Control  
IQC, IPQC, FQC, QA

Another Department  
Mold dept, Injection dept, SMT dept.



# ENTERPRISE PATENT CERTIFICATION







PG SERIES



PG250-CUW  
(2AC Outlets + USB Ports 3A1C)



PG260-CUW  
(2AC Outlets + USB Ports 2C1A)



PG210-CU  
(2AC Outlets + USB Ports 2C1A)

SPECIFICATIONS

	PG250-CUW	PG260-CUW	PG210-CU
AC Rating	230V/10A/2300W	125V/10A/1250W	250V/10A/2500W
Cable	3G 1.0mm² 1.5M	3G 16AWG 6FT	3G 1.0mm² 1.5M
Power Plug	AU Plug	US Plug	CN Plug
Product Size	80x80x40mm	80x80x35mm	80x80x35mm
Fast Charger USB Output	PD20W & Wireless Charging 10W		PD20W / 5V3A
Housing Material	PC UL 94V-0		
Color	White, Black, Teal, Yellow and Red, can Also be Customized		

PA SERIES



PAA0360  
(3AC Outlets + USB Ports 2C1A)



PAB0360  
(3AC Outlets + USB Ports 1C1A)

SPECIFICATIONS

	PAA0360	PAB0360
AC Rating	125V/10A/1250W	
Cable	3G 16AWG 6FT	
Power Plug	US Plug	
Product Size	90x85x78.5mm	
Fast Charger USB Output	PD20W	5V3A
Housing Material	PC UL 94V-0	
Color	White, Black, Teal, Yellow and Red, can Also be Customized	

ZBA SERIES



ZBA0360  
(3AC Outlets + USB Ports 2C2A)

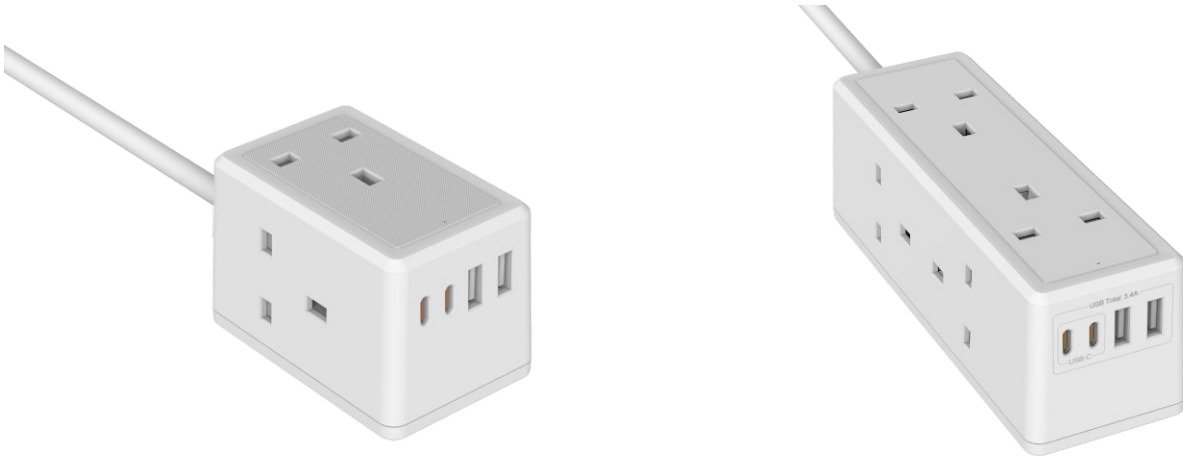
ZBA0660  
(6AC Outlets + USB Ports 2C2A)

ZBA0960  
(9AC Outlets + USB Ports 2C2A)

SPECIFICATIONS

	ZBA0360	ZBA0660	ZBA0960
AC Rating	125V/15A/1250W		
Cable	3G 16AWG 6FT		
Power Plug	US Plug		
Product Size	83x51x48mm	131x51x48mm	179x51x48mm
Fast Charger USB Output	PD20W / 5V3A		
Housing Material	PC UL 94V-0		
Color	White, Black, Teal, Yellow and Red, can Also be Customized		

ZBA SERIES



ZBA0380  
(3AC Outlets + USB Ports 2C2A)

ZBA0680  
(6AC Outlets + USB Ports 2C2A)

SPECIFICATIONS

	ZBA0380	ZBA0680
AC Rating	250V/13A/3250W	
Cable	3G 1.25mm² 1.5M	
Power Plug	UK Plug	
Product Size	83x51x55mm	151x51x55mm
Fast Charger USB Output	PD20W / 5V3A	
Housing Material	PC UL 94V-0	
Color	White, Black, Teal, Yellow and Red, can Also be Customized	



QBC SERIES



QBC0320  
(3AC Outlets + USB Ports 2A1C)

QBC0420  
(3AC Outlets + USB Ports 2A1C)

QBC0520  
(3AC Outlets + USB Ports 2A1C)

QBD SERIES



QBD0420  
(4AC Outlets)

QBD0520  
(5AC Outlets)

QBD0620  
(6AC Outlets)

SPECIFICATIONS

	QBC0320	QBC0420	QBC0520
AC Rating	230V/16A/3680W		
Cable	3G 1.5mm² 1.5M		
Power Plug	EU Plug		
Product Size	245x57x40mm	292x57x40mm	343x57x40mm
Fast Charger USB Output	PD20W / 5V3A		
Housing Material	PC UL 94V-0		
Color	White, Black, Teal, Yellow and Red, can Also be Customized		

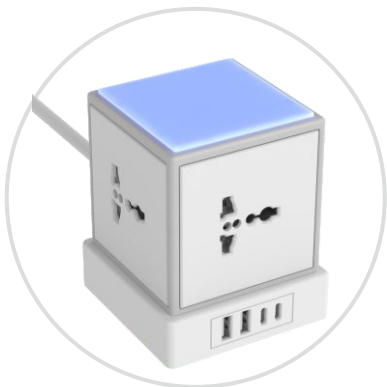
SPECIFICATIONS

	QBD0420	QBD0520	QBD0620
AC Rating	230V/16A/3680W		
Cable	3G 1.5mm² 1.5M		
Power Plug	EU Plug		
Product Size	245x57x40mm	292x57x40mm	343x57x40mm
Fast Charger USB Output	N/A		
Housing Material	PC UL 94V-0		
Color	White, Black, Teal, Yellow and Red, can Also be Customized		

QDB SERIES



QDB0420  
(4AC Outlets + USB Ports 2C2A)



QDB0411  
(4AC Outlets + USB Ports 2C2A)

SPECIFICATIONS

	QDB0420	QBC0411
AC Rating	230V/16A/3680W	250V/16A/4000W
Cable	3G 1.5mm² 1.5M	3G 1.5mm² 1.5M
Power Plug	EU Plug	Universal Plug
Product Size	88x88x106mm	70x70x85mm
Fast Charger USB Output	PD20W / 5V3A	
Housing Material	PC UL 94V-0	
Color	White, Black, Teal, Yellow and Red, can Also be Customized	

QDB SERIES



QDB0820  
(4AC Outlets + USB Ports 2C2A)

QDB0850  
(4AC Outlets + USB Ports 2C2A)

QDB1220  
(4AC Outlets + USB Ports 2C2A)

SPECIFICATIONS

	QDB0850	QDB0820	QDB1220
AC Rating	240V/10A/2400W	230V/16A/3680W	
Cable	3G 1.5mm² 1.5M	3G 1.5mm² 1.5M	
Power Plug	AU Plug	EU Plug	
Product Size	90x90x174mm	90x90x174mm	90x90x224mm
Fast Charger USB Output	PD20W / 5V3A		
Housing Material	PC UL 94V-0		
Color	White, Black, Teal, Yellow and Red, can Also be Customized		



SL SERIES



SL320  
(3AC Outlets + USB Ports 2C2A)



SL320  
(3AC Outlets + USB Ports 3A1C)



SL320  
(3AC Outlets + USB Ports 4A)

SPECIFICATIONS

	SL320
AC Rating	230V/16A/3680W
Cable	3G 1.5mm² 1.5M
Power Plug	EU Plug
Product Size	85x85x75mm
Fast Charger USB Output	PD35W / PD20W / 5V3A
Housing Material	PC UL 94V-0
Color	White, Black, Teal, Yellow and Red, can Also be Customized

SL SERIES



SL350  
(3AC Outlets + USB Ports 3A1C)



SL360  
(3AC Outlets + USB Ports 2A2C)



SL380  
(3AC Outlets + USB Ports 3A1C)

SPECIFICATIONS

	SL350	SL360	SL380
AC Rating	240V/10A/2400W	125V/15A/1875W	250V/13A/3250W
Cable	3G 1.5mm² 1.5M	3G 16AWG 6FT	3G 1.25mm² 1.5M
Power Plug	AU Plug	US Plug	UK Plug
Product Size	85x85x75mm	85x85x75mm	85x85x75mm
Fast Charger USB Output	PD35W / PD20W / 5V3A		
Housing Material	PC UL 94V-0		
Color	White, Black, Teal, Yellow and Red, can Also be Customized		

SH SERIES



SH120  
(1AC Outlets + USB Ports 1C1A / 2A)

SH130  
(1AC Outlets + USB Ports 1C1A / 2A)

SPECIFICATIONS

	SH120	SH130
AC Rating	230V/16A/3680W	230V/16A/3680W
Cable	3G 1.5mm² 1.5M	3G 1.5mm² 1.5M
Power Plug	EU Plug	FR Plug
Product Size	78x78x42mm	78x78x42mm
Fast Charger USB Output	5V3A	
Housing Material	PC UL 94V-0	
Color	White, Black, Teal, Yellow and Red, can Also be Customized	

PL SERIES



PL420  
(4AC Outlets + USB Ports 2A2C)

PL420  
(4AC Outlets + USB Ports 4A)

PL450  
(4AC Outlets + USB Ports 2A1C)

SPECIFICATIONS

	PL420	PL450
AC Rating	230V/16A/3680W	240V/10A/2400W
Cable	3G 1.5mm² 1.5M	3G 1.5mm² 1.5M
Power Plug	EU Plug	AU Plug
Product Size	81x81x76mm	60x81x60mm
Fast Charger USB Output	PD20W / 5V3A	
Housing Material	PC UL 94V-0	
Color	White, Black, Teal, Yellow and Red, can Also be Customized	



ZBC SERIES



ZBC0420  
(4AC Outlets + USB Ports 2A1C)



ZBC0460  
(4AC Outlets + USB Ports 2A1C)



ZBC0480  
(4AC Outlets + USB Ports 2A1C)

SPECIFICATIONS

	ZBC0420	ZBC0460	ZBC0480
AC Rating	230V/16A/3680W	125V/15A/1875W	250V/13A/3250W
Cable	3G 1.5mm² 1.5M	3G 16AWG 6FT	3G 1.25mm² 1.5M
Power Plug	EU Plug	US Plug	UK Plug
Product Size	80x57x68mm	80x57x63.5mm	80x57x64.3mm
Fast Charger USB Output	5V3A		
Housing Material	PC UL 94V-0		
Color	White, Black, Teal, Yellow and Red, can Also be Customized		

ZBD SERIES



ZBD0420  
(3AC Outlets + USB Ports 2A1C)

SPECIFICATIONS

	ZBD0420
AC Rating	230V/16A/3680W
Cable	3G 1.5mm² 1.5M
Power Plug	EU Plug
Product Size	80x57x45mm
Fast Charger USB Output	5V3A
Housing Material	PC UL 94V-0
Color	White, Black, Teal, Yellow and Red, can Also be Customized

PEA SERIES



PEA0520  
(4AC Outlets + USB Ports 2A2C)

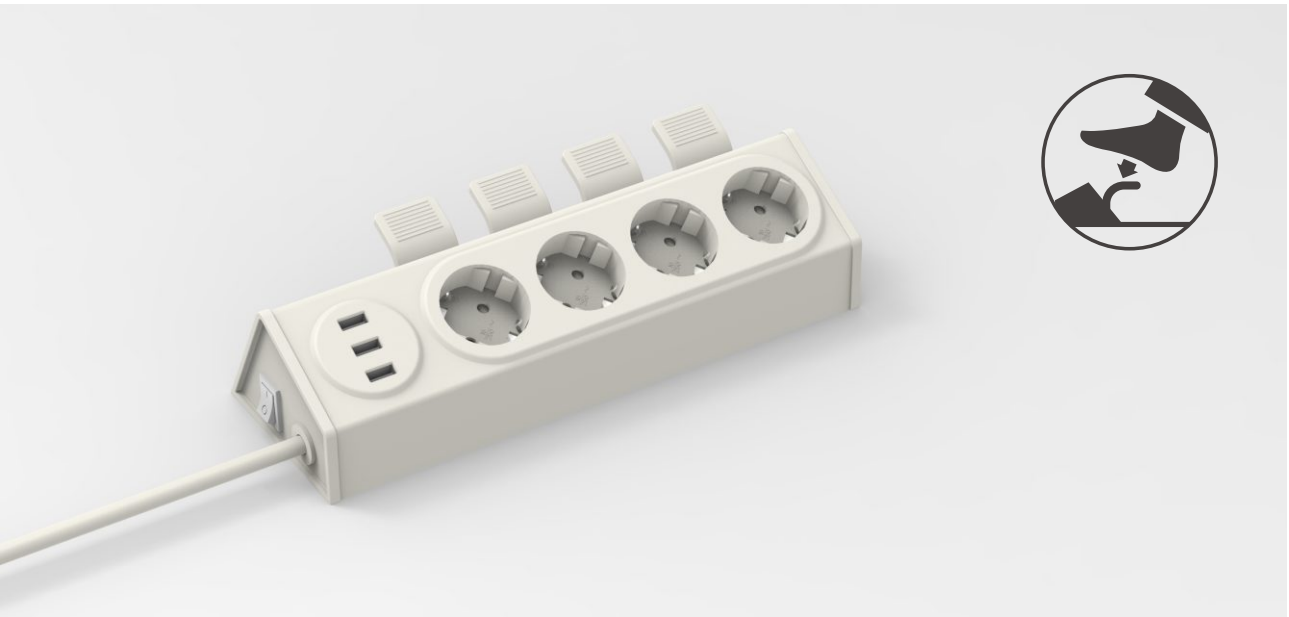


PEA0520  
(4AC Outlets + USB Ports 2A2C)

SPECIFICATIONS

	PEA0520
AC Rating	230V/16A/3680W
Cable	3G 1.5mm² 1.5M
Power Plug	EU Plug
Product Size	324x75x65mm
Fast Charger USB Output	PD20W / 5V3A
Housing Material	PC UL 94V-0
Color	White, Black, Teal, Yellow and Red, can Also be Customized

ST SERIES



ST420  
(4AC Outlets)



ST420  
(4AC Outlets + USB Ports 3A)

SPECIFICATIONS

	ST420
AC Rating	230V/16A/3680W
Cable	3G 1.5mm² 1.5M
Power Plug	EU Plug
Product Size	265x64x110mm
Fast Charger USB Output	5V3A
Housing Material	PC UL 94V-0
Color	White, Black, Teal, Yellow and Red, can Also be Customized



PDU SERIES



HBB0860  
(8AC Outlets + USB Ports 2A1C)

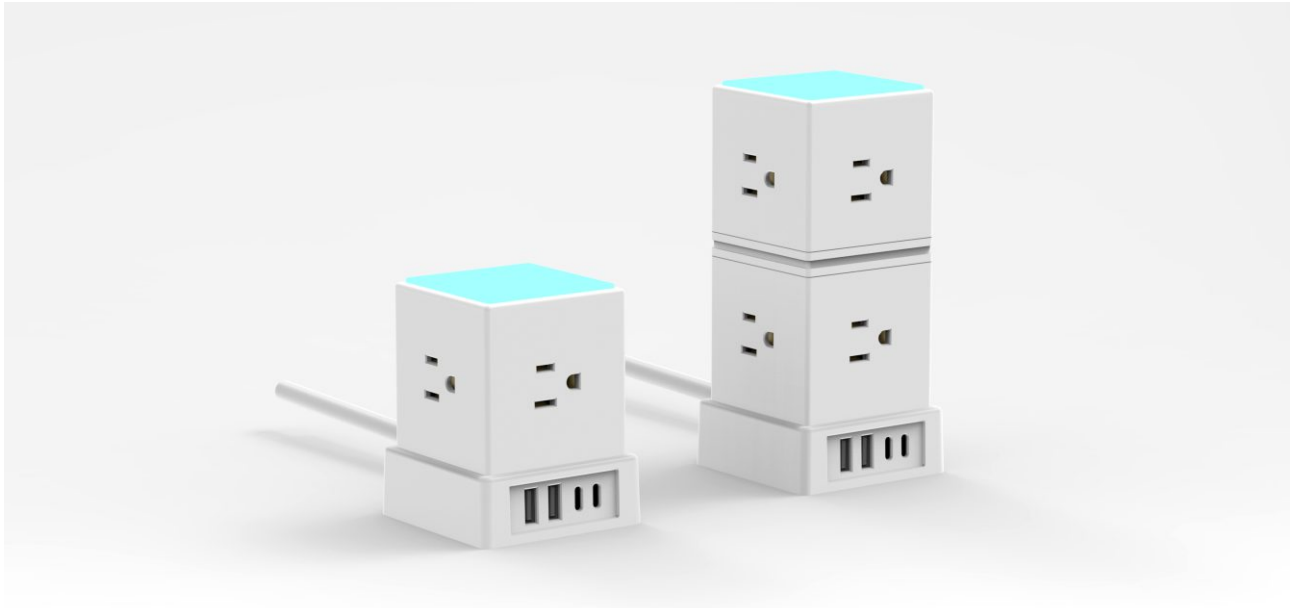
HA820  
(8AC Outlets + USB Ports 2A1C)

HA1020  
(10AC Outlets)

SPECIFICATIONS

	HBB0860	HA620/HA820/HA1020
AC Rating	125V/15A/1875W	230V/16A/3680W
Cable	3G 16AWG 6FT	3G 1.25mm² 1.5M
Power Plug	US Plug	EU Plug
Product Size	485x45x45mm	504x45x45mm
Fast Charger USB Output	PD20W / 5V3A	
Housing Material	PC UL 94V-0	
Color	White, Black, Teal, Yellow and Red, can Also be Customized	

QBD SERIES



QDB0460  
(4AC Outlets + USB Ports 2A2C)

QDB0860  
(8AC Outlets + USB Ports 2A2C)

SPECIFICATIONS

	QDB0460	QDB0860
AC Rating	125V/15A/1875W	125V/15A/1875W
Cable	3G 16AWG 6FT	3G 16AWG 6FT
Power Plug	US Plug	US Plug
Product Size	68x68x86mm	68x68x146mm
Fast Charger USB Output	PD20W / 5V3A	
Housing Material	PC UL 94V-0	
Color	White, Black, Teal, Yellow and Red, can Also be Customized	

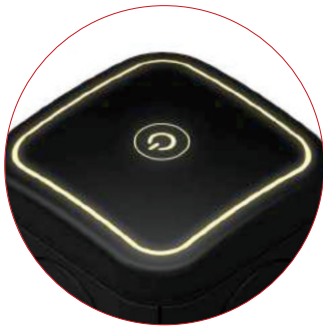
SH SERIES



SH850  
(8AC Outlets + USB Ports 4A2C)



SH860  
(8AC Outlets + USB Ports 4A2C)

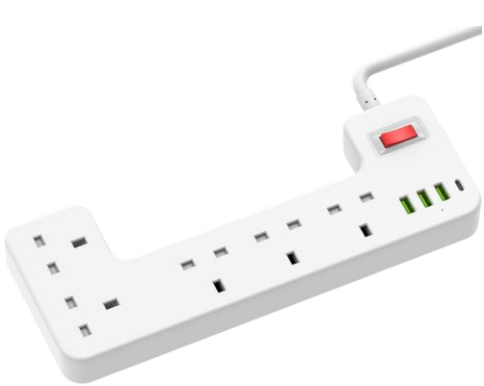


- Touch Sensor Switch**
- The first touch of the switch is yellow light,
  - The second is white,
  - The third is mixed yellow and white light,
  - The fourth is to turn off the lights.

SPECIFICATIONS

	SH850	SH860
AC Rating	250V/10A/2500W	125V/15A/1875W
Cable	3G 1.5mm² 1.5M	3G 16AWG 6FT
Power Plug	AU Plug	US Plug
Product Size	170x170x232mm	170x170x230mm
Fast Charger USB Output	5V4A x2 Total 40W max	
Housing Material	PC UL 94V-0	
Color	White, Black, Teal, Yellow and Red, can Also be Customized	

PW SERIES



PW0580  
5AC Outlets + USB Ports 3A1C)



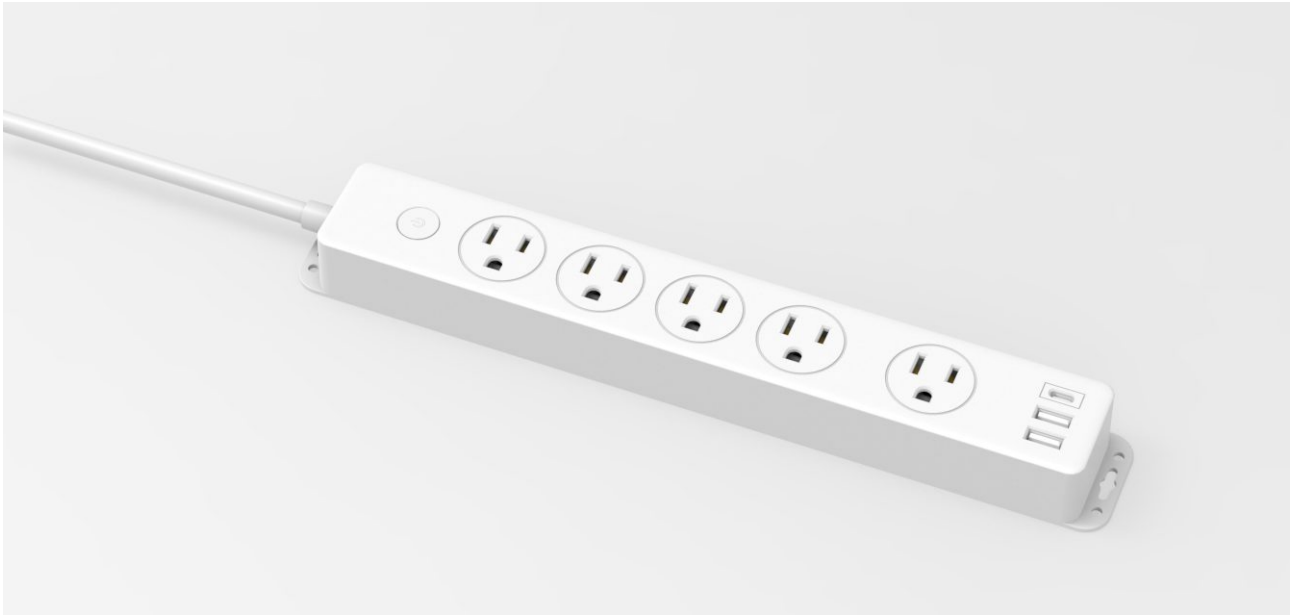
PW0620  
(6AC Outlets + USB Ports 3A1C)

SPECIFICATIONS

	PW0580	PW0620
AC Rating	250V/13A/3250W	230V/16A/3680W
Cable	3G 1.25mm² 1.5M	3G 1.5mm² 1.5M
Power Plug	UK Plug	EU Plug
Product Size	310x158x62mm / 286x110x30mm	310x158x62mm / 286x110x40mm
Fast Charger USB Output	PD20W / 5V3A	
Housing Material	PC UL 94V-0	
Color	White, Black, Teal, Yellow and Red, can Also be Customized	



PB SERIES



PB660  
(6AC Outlets + USB Ports 4A)

PB560  
(5AC Outlets + USB Ports 2A1C)

PB410  
(4AC Outlets + USB Ports 2A1C)

SPECIFICATIONS

	PB660	PB560	PB410
AC Rating	125V/15A/1875W		250V/10A/2500W
Cable	3G 16AWG 6FT		3G 1.0mm² 1.5M
Power Plug	US Plug		CN Plug
Product Size	310x38x26mm	310x45x29mm	300x45.5x33mm
Fast Charger USB Output	5V3A		
Housing Material	PC UL 94V-0		
Color	White, Black, Teal, Yellow and Red, can Also be Customized		

SN SERIES



SN660  
(6AC Outlets + USB Ports 2A2C)

SN560  
(5AC Outlets + USB Ports 3A)

SN560  
(5AC Outlets + USB Ports 2A1C)

SPECIFICATIONS

	SN660	SN560	SN560
AC Rating	125V/15A/1875W		
Cable	3G 16AWG 6FT		
Power Plug	US Plug		
Product Size	332x52x34mm	260x50x27.5mm	260x55x27.5mm
Fast Charger USB Output	PD20W / 5V3A		
Housing Material	PC UL 94V-0		
Color	White, Black, Teal, Yellow and Red, can Also be Customized		

PN SERIES



PN460  
(4AC Outlets + USB Ports 2A1C)

SPECIFICATIONS

	PN460
AC Rating	125V/10A/1250W
Cable	3G 16AWG 6FT
Power Plug	US Plug
Product Size	379x46x60mm
Fast Charger USB Output	5V3A
Housing Material	PC UL 94V-0
Color	White, Black, Teal, Yellow and Red, can Also be Customized

PT SERIES



PT880  
(8AC Outlets + USB Ports 2A2C)

PT1020  
(10AC Outlets + USB Ports 2A2C)

SPECIFICATIONS

	PT880	PT1020
AC Rating	250V/13A/3250W	230V/16A/3680W
Cable	3G 1.25mm² 1.5M	3G 1.5mm² 1.5M
Power Plug	UK Plug	EU Plug
Product Size	270x110x29mm	308x110x40mm
Fast Charger USB Output	PD20W / 5V3A	
Housing Material	PC UL 94V-0	
Color	White, Black, Teal, Yellow and Red, can Also be Customized	

PA1260



PA1260  
(12AC Outlets + USB Ports 2A2C)

FC0620



FC0620  
(4AC Outlets + USB Ports 2A1C)

SQ1060



SQ1060  
(10AC Outlets + USB Ports 2A1C)

PU1560



PU1560  
(15AC Outlets + USB Ports 3A1C)

SPECIFICATIONS

	PA1260	FC0620
AC Rating	125V/15A/1875W	230V/16A/3680W
Cable	3G 16AWG 6FT	3G 1.5mm² 1.5M
Power Plug	US Plug	EU Plug
Product Size	300x84x28mm	374x80x42mm
Fast Charger USB Output	PD20W / 5V3A	
Housing Material	PC UL 94V-0	
Color	White, Black, Teal, Yellow and Red, can Also be Customized	

SPECIFICATIONS

	SQ1060	PU1560
AC Rating	125V/15A/1875W	125V/15A/1875W
Cable	3G 16AWG 6FT	3G 16AWG 6FT
Power Plug	US Plug	US Plug
Product Size	268x100x31mm	265x113x28mm
Fast Charger USB Output	PD20W / 5V3A	
Housing Material	PC UL 94V-0	
Color	White, Black, Teal, Yellow and Red, can Also be Customized	



SU SERIES



SU520  
(5AC Outlets + USB Ports 2A1C)



SU530  
(5AC Outlets + USB Ports 2A1C)

SPECIFICATIONS

	SU520	SU530
AC Rating	230V/16A/3680W	230V/16A/3680W
Cable	3G 1.5mm² 1.5M	3G 1.5mm² 1.5M
Power Plug	EU Plug	FR Plug
Product Size	352x55x40mm	352x55x40mm
Fast Charger USB Output	PD20W / 5V3A	
Housing Material	PC UL 94V-0	
Color	White, Black, Teal, Yellow and Red, can Also be Customized	

SC/SD SERIES



SC850  
(8AC Outlets + USB Ports 4A)



SD820  
(8AC Outlets + USB Ports 4A)



SD880  
(8AC Outlets + USB Ports 4A)

SPECIFICATIONS

	SC850	SD820	SD880
AC Rating	250V/10A/3250W	230V/16A/3680W	250V/13A/2500W
Cable	3G 1.5mm² 1.5M	3G 1.5mm² 1.5M	3G 1.25mm² 1.5M
Power Plug	AU Plug	EU Plug	UK Plug
Product Size	311x111x28mm	301x122x43.5mm	327x126x43.5mm
Fast Charger USB Output	5V3A		
Housing Material	PC UL 94V-0		
Color	White, Black, Teal, Yellow and Red, can Also be Customized		



SR SERIES



SR620  
(6AC Outlets)



SR520-4U  
(5AC Outlets + USB Ports 2A)



SR420-2U  
(4AC Outlets + USB Ports 4A)

SPECIFICATIONS

AC Rating	230V/16A/3680W
Cable	1.5M 3G 1.0mm <sup>2</sup>
Surge Protection	MOV Surge Protection
Power Plug	VDE Plug
Product Size	440x70x43mm
Fast Charger USB Output	Total 5V DC 3.1A Single Port: Max. 5V DC 2.1A
Housing Material	PC UL 94V-0
Color	White, Black, Teal, Yellow and Red, can Also be Customized



SR SERIES



SR630  
(6AC Outlets)



SR530-2U  
(5AC Outlets + USB Ports 2A)



SR430-4U  
(4AC Outlets + USB Ports 4A)

SPECIFICATIONS

AC Rating	230V/16A/3680W
Cable	1.5M 3G 1.0mm <sup>2</sup>
Surge Protection	MOV Surge Protection
Power Plug	VDE Plug
Product Size	440x70x43mm
Fast Charger USB Output	Total 5V DC 3.1A Single Port: Max. 5V DC 2.1A
Housing Material	PC UL 94V-0
Color	White, Black, Teal, Yellow and Red, can Also be Customized





SPECIFICATIONS

AC Rating	100-250V/10-16A
Cable	1.5M 3G 16AWG
Power Plug	US,EU,AU Plug
Product Size	108x102x31.6mm
Fast Charger USB Output	5-20V,Max 30W
Housing Material	PC UL 94V-0
Color	White, Black, Teal, Yellow and Red, can Also be Customized

QG220-U

VED Plug AC Rating: 250V/10A/2500W



QG220-CU White  
(With Type C)



QG220-CU Black  
(With Type C)



QG220-U White



QG220-U Black

QG230-U

VDE Plug AC Rating: 250V/10A/2500W



QG230-CU White  
(With Type C)



QG230-CU Black  
(With Type C)



QG230-U White



QG230-U Black

QG250-U

AU Plug AC Rating: 240V/10A/2400W



QG250-CU White  
(With Type C)



QG250-CU Black  
(With Type C)



QG250-U White



QG250-U Black

QG260-U

US Plug AC Rating: 125V/15A/1875W



QG260-CU White  
(With Type C)



QG260-CU Black  
(With Type C)



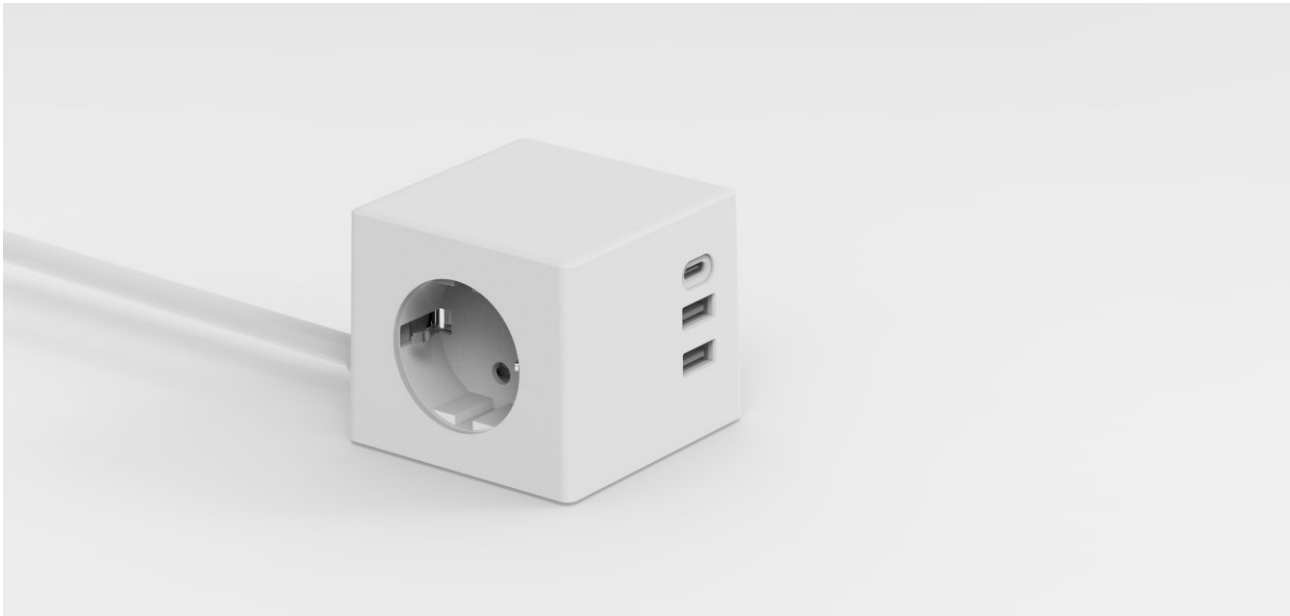
QG260-U White



QG260-U Black



QB/QC SERIES



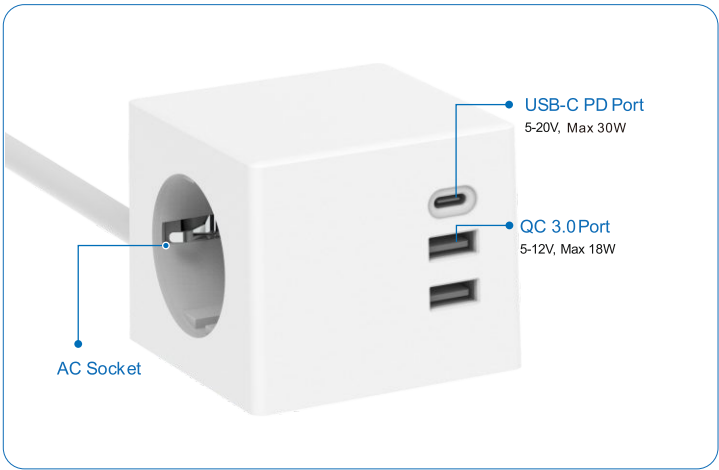
1

Sockets

USB Charger

QC 3.0

Type-C



QB0120  
(1AC Outlets + USB Ports 2A1C)

SPECIFICATIONS

	QB0120
AC Rating	230V/16A/3680W
Cable	3G 1.5mm² 1.5M
Power Plug	EU Plug
Product Size	324x75x65mm
Fast Charger USB Output	PD30W / 5V3A
Housing Material	PC UL 94V-0
Color	White, Black, Teal, Yellow and Red, can Also be Customized

QC120-U

VED Plug AC Rating: 230V/10A/2500W



QC120-U White(with switch)



QC120-U Black(with switch)



QC120-U White(no switch)



QC120-U Black(no switch)

QC130-U

VDE Plug AC Rating: 250V/10A/2500W



QC130-U White(with switch)



QC130-U Black(with switch)



QC130-U White(no switch)



QC130-U Black(no switch)

QC150-U

AU Plug AC Rating: 240V/10A/2400W



QC150-U White(with switch)



QC150-U Black(with switch)



QC150-U White(no switch)



QC150-U Black(no switch)

QC160-U

US Plug AC Rating: 125V/15A/1875W



QC160-U White(with switch)



QC160-U Black(with switch)



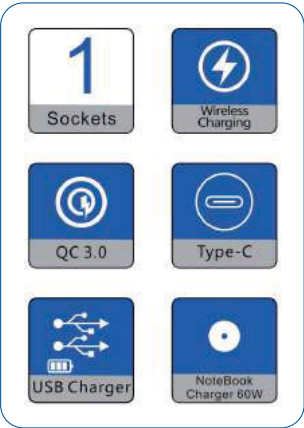
QC160-U White(no switch)



QC160-U Black(no switch)



QT SERIES



QT160  
(1AC Outlets + USB Ports 2A2C)

SPECIFICATIONS

	QT160
AC Rating	125V/15A/1875W
Cable	3G 16AWG 6FT
Power Plug	US Plug
Product Size	138x70x39mm
Fast Charger USB Output	PD65W / Wireless Charger
Housing Material	PC UL 94V-0
Color	White, Black, Teal, Yellow and Red, can Also be Customized

QT120-U

VED Plug AC Rating: 230V/10A/2500W



QT130-U

VDE Plug AC Rating: 230V/10A/2500W



QT150-U

AU Plug AC Rating: 240V/10A/2400W



QT160-U

US Plug AC Rating: 125V/15A/1875W





QEA SERIES



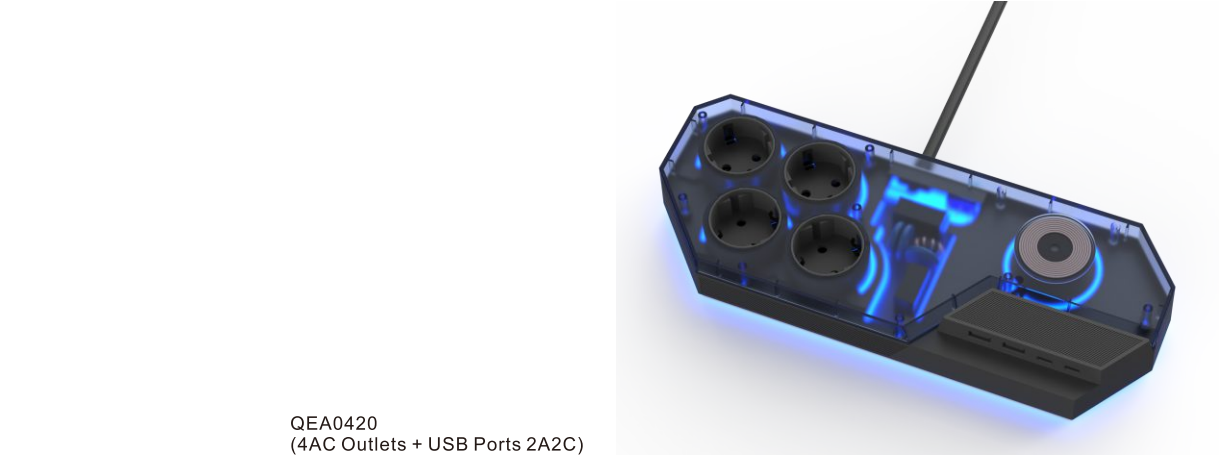
QEA0620  
(6AC Outlets + USB Ports 2A2C)



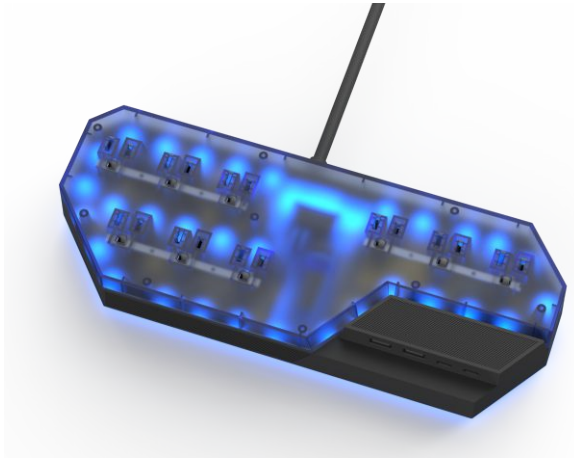
SPECIFICATIONS

	QEA0620
AC Rating	250V/16A/3250W
Cable	3G 1.5mm² 1.5M
Power Plug	EU Plug
Product Size	305x116x42mm
Fast Charger USB Output	PD65W / PD30W / PD20W / 5V3A
Housing Material	PC UL 94V-0
Color	White, Black, Teal, Yellow and Red, can Also be Customized

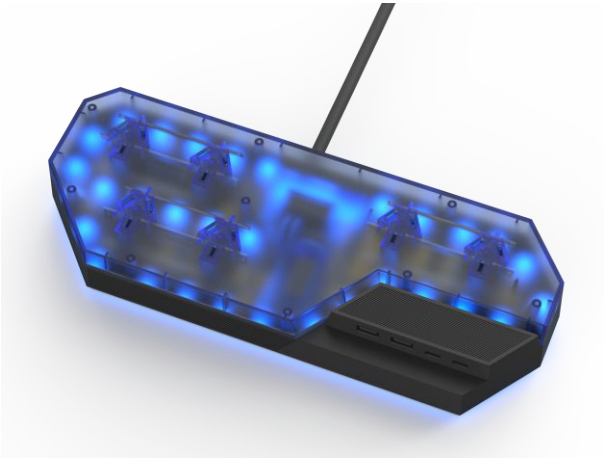
QEA SERIES



QEA0420  
(4AC Outlets + USB Ports 2A2C)



QEA0660  
(6AC Outlets + USB Ports 2A2C)



QEA0650  
(6AC Outlets + USB Ports 2A2C)

SPECIFICATIONS

	QEA0420	QEA0660	QEA0650
AC Rating	250V/16A/2500W	125V/15A/1875W	250V/10A/3250W
Cable	3G 1.5mm² 1.5M	3G 16AWG 6FT	3G 1.5mm² 1.5M
Power Plug	EU Plug	US Plug	AU Plug
Product Size	305x116x42mm	305x116x42mm	
Fast Charger USB Output	PD20W / Wireless Charger	PD65W / PD30W / PD20W / 5V3A	
Housing Material	PC UL 94V-0		
Color	White, Black, Teal, Yellow and Red, can Also be Customized		