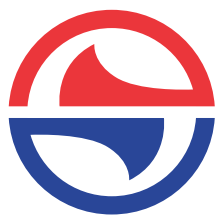




REVEALS AND MOLDINGS PROFILES

PROAKS METAL BUILDING SYSTEM



PROAKS METAL

We...

As Proaks Metal we would like to inform you about our products which we manufacture and market. We stand by our products reliability not only throughout the project and essembly stages but also in the course of utilization, even after years. Our sole purpose is earning your trust and deserving your preference for your next project based upon your impression of our products.

Finding the best solutions for your projects with Proaks products, prioritising our customers satisfaction in every step of production. Therefore, we process the best quality raw materials with our experience and fund of knowledge. On top of that, we guarantee our quality with the certificates we proudly own. Despite all, if any irregularities occur during application which are not in accordance with our standarts, we simply replace it.

That way the solution always provides satisfactory consequences. That result is the biggest source of pride for Proaks Metal staff. Constant drive for progress is the result of our passion and respect to our jobs.





WORLD QUALITY REGISTRAR

CERTIFICATE

Nr : A-221177 EC DECLARATION OF CONFORMITY AT UYGUNLUK BEYANI

Manufacturer / Üretici :

PROAKS METAL YAPI SİSTEMLERİ SANAYİ VE TİC. LTD. ŞTİ.

Address / Adres :

ORGANİZE SANAYİ BÖLGESİ BİRLİK KÜÇÜK SAN. SİT. 17. ADA 5. CAD. NO:29
BEYLİKDÜZÜ İSTANBUL TÜRKİYE TURKEY

Products / Ürün :

ALÇI LEVHA MÜDEHALE KAPAKLARI / PLASTERBOARD ACCESS PANEL
FUGA VE DETAY PROFİLLERİ / REVEALS AND MOLDINGS PROFILES
ASMA TAVAN, DUVAR BÖLME AKSESUARLARI / SUSPENDED CEILING, WALL PARTITION ACCESSORIES

Related Standards / İlgili Standartlar :

TS EN 14190:2014 - ALÇI LEVHALAR - TEKRAR İŞLEME TABİ TUTULARAK ELDE EDİLEN - TARİFLER, GEREKLER VE DENEY
YÖNTEMLERİ / GYPSUM BOARD PRODUCTS FROM REPROCESSING - DEFINITIONS, REQUIREMENTS AND TEST METHODS
TS EN 14195:2014 - ALÇI LEVHA SİSTEMLERİNDE KULLANILAN METAL ÇERÇEVE BİLEŞENLERİ - TARİFLER, GEREKLER VE DENEY
YÖNTEMLERİ / METAL FRAMING COMPONENTS FOR GYPSUM BOARD SYSTEMS - DEFINITIONS, REQUIREMENTS AND TEST METHODS

Base of Certification / Sertifikasyon Zemini :

Technical File No: CE-PROAKS-221118

For the above products, the technical file and base product provided by the manufacturer is prepared on the basis of a voluntary test in accordance with the Construction Products Regulation 305/2011/EU Category I basic protection requirements.

The CE mark shown below can be used on the product at the discretion of the company, after the preparation of the necessary technical documents and declaration of conformity, and as long as other relevant directives and standards are complied with.

The use of CE marking is at the discretion of the company.

Yukarıda belirtilen ürünler için, üretici tarafından sunulan teknik dosya ve baz alınan ürün, gönüllü bir test temelinde

Yapı Malzemeleri Yönetmeliği 305/2011/AB temel koruma gereksinimlerine uygun hazırlanmışsa, gerekli teknik

belgelerin ve uygunluk beyanının hazırlanmasından sonra ve diğer ilgili direktifler ve standartlara uyum sağlandığı

sürece aşağıda gösterilen CE işareti firmanın inisiyatifiyle ürün üzerine kullanılabilir.

CE işaretinin kullanılması firmanın inisiyatifindedir.

CERT. PUBLICATION DATE
SERT. YAYIN TARİHİ
18.11.2022

CERT. EXPIRY DATE
SERT. GEÇERLİLİK TARİHİ
17.11.2023


DIRECTOR

WQR International Certification Ltd.
www.wqrcert.com | info@wqrcert.com



The validity of the certificate can be checked through www.wqrcert.com
Bu belgenin geçerliği www.wqrcert.com internet sitesinden kontrol edilebilir.



CERTIFICATE

**Proaks Metal Yapı Sistemleri Sanayi ve
Ticaret Ltd. Şti.**

**Organize Sanayi Bölgesi Birlik Küçük San. Sit. 17. Ada 5. Cad.
No: 29 Beylikdüzü İstanbul Turkey**

The above-mentioned organization implements and maintains a management system in the following scope, and its compliance with the standard has been approved by KingCert.

ISO 45001:2018
Occupational Health and Safety Management System

**Scope : Manufacturing and Sales of Galvanized Sheet Roof Connection
Elements, Suspended Ceiling Partition Wall Accessories, Plastic Anchor
Aluminum Intervention Cover and Detail Profiles**
IAF/EA Code: 14,17



This certificate is valid during above mentioned company perform the requirements of ISO 45001:2018 standard and fulfill all responsibilities to KingCert.

Certificate Publication Date : 18.11.2022
Cert. Last Issue Date : 18.11.2022
Cert. Expiry Date : 17.11.2025
Cert. Period Exp. Date : 17.11.2025
Certificate Number : 116887558530


King Cert International Certification Ltd.
Director

King Cert International
Certification Ltd.
Manastirski Livadi, Str. Lavski
Rid 19, Sofia Bulgaria
info@KingCert.com
FR.25. / 01.09.2018 / 04.06.2019 / 02

Hereby, King Cert International Certification Ltd., certifies that the above stated company have the appropriate management system according to the requirements of the above standards. This certificate is valid for three years as long as the system effectively maintained and surveillance audits are carried out. The validity of the certificate can be checked through www.KingCert.com. The certificate is property of King Cert International Certification Ltd. and shall be returned if so requested.



CERTIFICATE

**Proaks Metal Yapı Sistemleri Sanayi ve
Ticaret Ltd. Şti.**

**Organize Sanayi Bölgesi Birlik Küçük San. Sit. 17. Ada 5. Cad.
No: 29 Beylikdüzü İstanbul Turkey**

The above-mentioned organization implements and maintains a management system in the following scope, and its compliance with the standard has been approved by KingCert.

ISO 9001:2015 Quality Management System

**Scope : Manufacturing and Sales of Galvanized Sheet Roof Connection
Elements, Suspended Ceiling Partition Wall Accessories, Plastic Anchor
Aluminum Intervention Cover and Detail Profiles**
IAF/EA Code: 14,17



ACCREDITED
Management Systems
Certification Body
MSCB-196



This certificate is valid during above mentioned company perform the requirements of ISO 9001:2015 standard and fulfill all responsibilities to KingCert.

Certificate Publication Date : 16.11.2022

Cert. Last Issue Date : 16.11.2022

Cert. Expiry Date : 17.11.2025

Cert. Period Exp. Date : 17.11.2025

Certificate Number : H668765B17Q

King Cert International Certification Ltd.
Director

King Cert International
Certification Ltd.
Manastirski Livadi, Str. Lavski
Rid 15, Sofia Bulgaria
info@KingCert.com
FR.25. / 01.05.2016 / 04.06.2019 / 02

Hereby, King Cert International Certification Ltd., certifies that the above stated company have the appropriate management system according to the requirements of the above standards. This certificate is valid for three years as long as the system effectively maintained and surveillance audits are carried out. The validity of the certificate can be checked through www.KingCert.com. The certificate is property of King Cert International Certification Ltd. and shall be returned if so requested.



CERTIFICATE

**Proaks Metal Yapı Sistemleri Sanayi ve
Ticaret Ltd. Şti.**

**Organize Sanayi Bölgesi Birlik Küçük San. Sit. 17. Ada 5. Cad.
No: 29 Beylikdüzü İstanbul Turkey**

The above-mentioned organization implements and maintains a management system in the following scope, and its compliance with the standard has been approved by KingCert.

ISO 14001:2015 Environmental Management System

**Scope : Manufacturing and Sales of Galvanized Sheet Roof Connection
Elements, Suspended Ceiling Partition Wall Accessories, Plastic Anchor
Aluminum Intervention Cover and Detail Profiles**
IAF/EA Code: 14,17



ACCREDITED
Management Systems
Certification Body
MSCB-196



This certificate is valid during above mentioned company perform the requirements of ISO 14001:2015 standard and fulfill all responsibilities to KingCert.

Certificate Publication Date : 16.11.2022

Cert. Last Issue Date : 16.11.2022

Cert. Expiry Date : 17.11.2025

Cert. Period Exp. Date : 17.11.2025

Certificate Number : H668765895E

King Cert International Certification Ltd.
Director

King Cert International
Certification Ltd.
Manastirski Livadi, Str. Lavski
Rid 15, Sofia Bulgaria
info@KingCert.com
FR.25 / 01.09.2016 / 04.06.2019 / 02

Hereby, King Cert International Certification Ltd., certifies that the above stated company have the appropriate management system according to the requirements of the above standards. This certificate is valid for three years as long as the system effectively maintained and surveillance audits are carried out. The validity of the certificate can be checked through www.KingCert.com. The certificate is property of King Cert International Certification Ltd. and shall be returned if so requested.

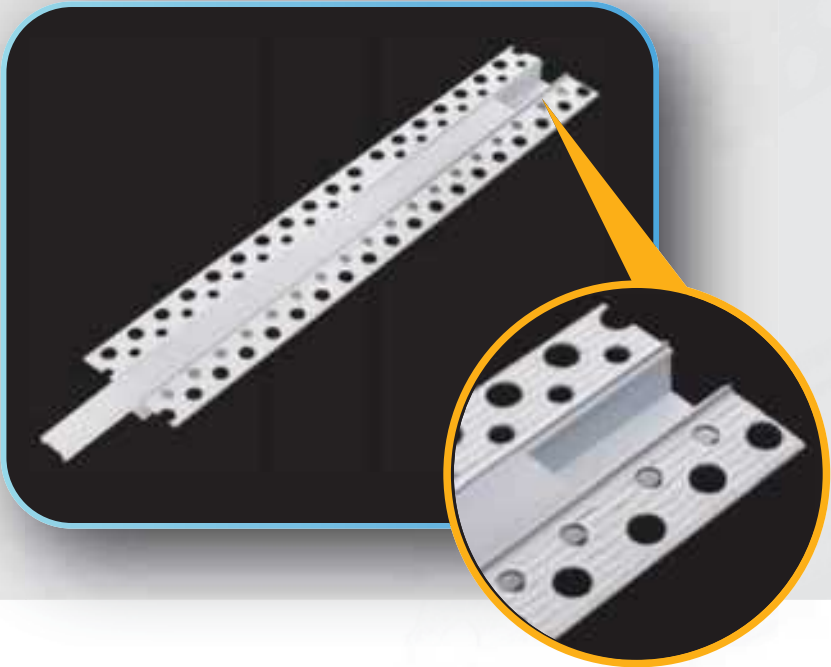
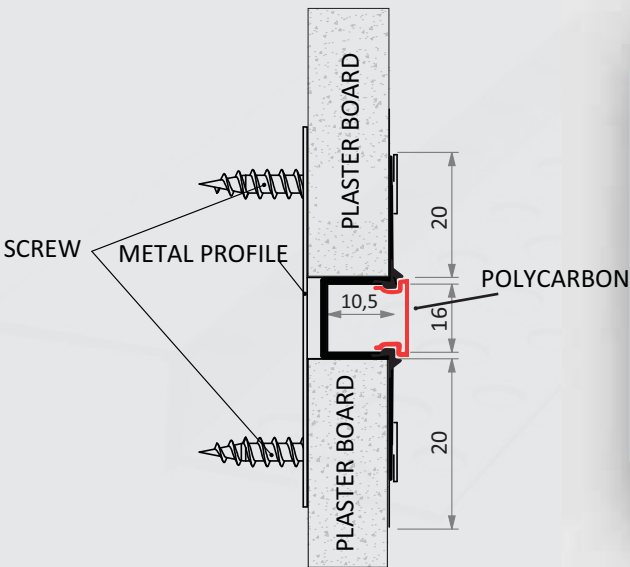
JOINT GAP AND DETAIL PROFILES

Profile accessories are used as complementary materials in plasterboard suspended ceiling partition systems. The raw material used in the accessories is manufactured with hot dip galvanization properties and provides protection against rust. None of our products are stainless. Due to the coating that our products have, their coating does not fall off when folded. When used in application standards, it distributes the load evenly and does not cause cracking in any component of the system. When our products are modular, they can be easily disassembled and assembled.



PROAKS METAL

LED PROFILES (WITH POLYCARBON COVER)



ALUMINUM LED PROFILE

| Order Code | Product Type | Package Quantity |
|------------|------------------|------------------|
| 1300 | LED PROFILE 16mm | 25 pcs x 3m |
| 1301 | LED PROFILE 35mm | 10 pcs x 3m |
| 1302 | LED PROFILE 46mm | 10 pcs x 3m |

Product Description:

It is used to prevent cracks in wide movable joints at the junctions of plasterboard suspended ceiling and partition wall systems and separate surfaces at junction points such as ceramics in wet areas. It provides ease of use and provides visual aesthetics without making any additions to the areas where it is used.

Area of Use

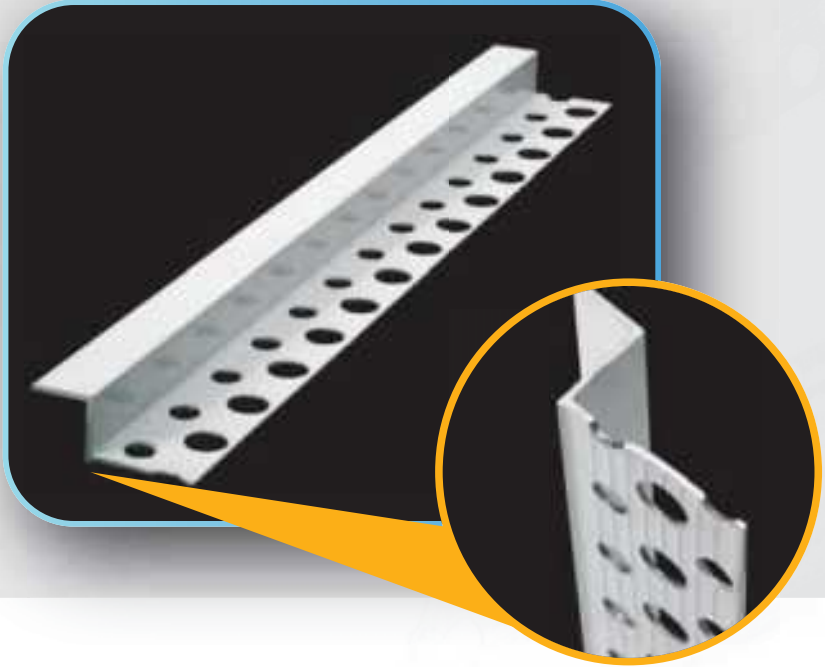
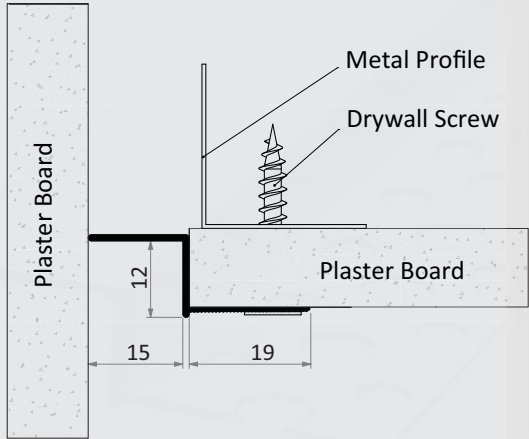
It is used in drywall, suspended ceiling and wall joints.

Product Storage Conditions

All joints and detail profiles are painted to avoid surface sensitivity, and galvanized profiles to avoid contact with water and in order to obtain a flat surface, it must be kept in a way that it will not be subjected to impact.

Our aluminum white painted products are in Ral 9016 code. Optional special color production can be done.

JOINT GAP AND DETAIL PROFILES



ALUMINUM Z PROFILE SHORT EDGE

| Order Code | Product Type | Package Quantity |
|------------|----------------------------|------------------|
| 1110 | Z profile 5 mm short side | 50 pcs x 3m |
| 1123 | Z profile 10 mm short side | 50 pcs x 3m |
| 1124 | Z profile 15 mm short side | 50 pcs x 3m |
| 1125 | Z profile 20 mm short side | 50 pcs x 3m |
| 1174 | Z profile 25 mm short side | 50 pcs x 3m |

Product description:

It is used to prevent cracks in wide movable joints at the junctions of plasterboard suspended ceiling and partition wall systems and separate surfaces at junction points such as ceramics in wet areas.
It provides ease of use and provides visual aesthetics without making any additions to the areas where it is used.

Area of Use

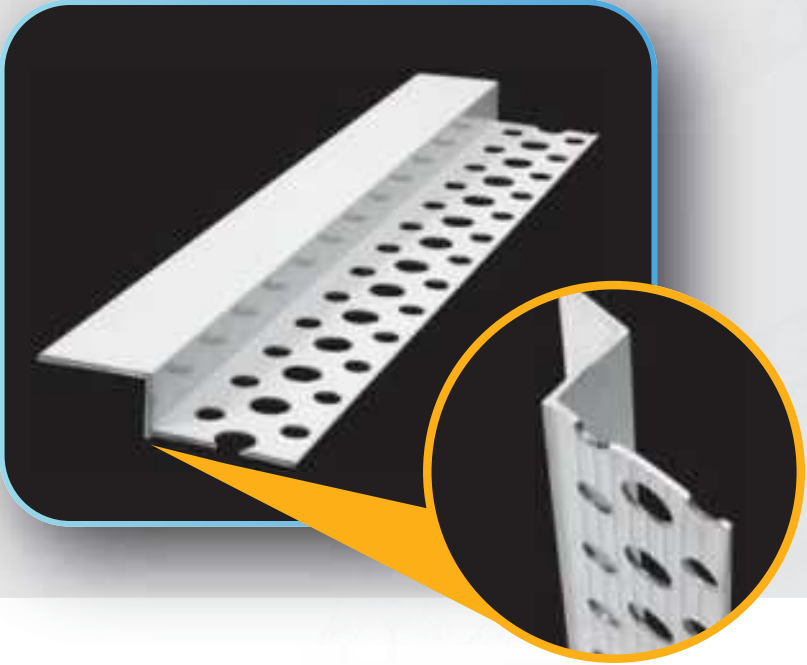
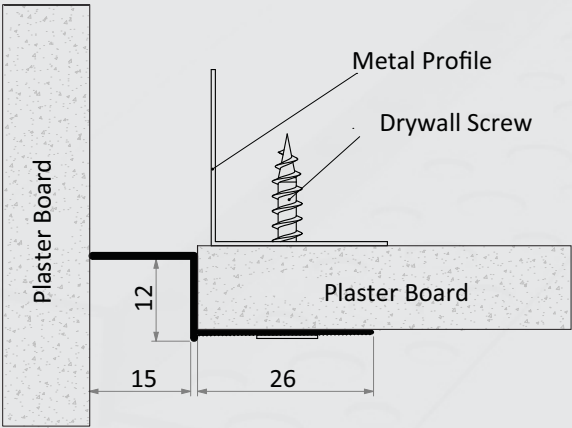
It is used in drywall, suspended ceiling and wall joints.

Product storage conditions

It is used to prevent cracks in wide movable joints at the junctions of plasterboard suspended ceiling and partition wall systems and separate surfaces at junction points such as ceramics in wet areas.
It provides ease of use and provides visual aesthetics without making any additions to the areas where it is used.

Our aluminum white painted products are in Ral 9016 code. Optional special color production can be done.

JOINT GAP AND DETAIL PROFILES



ALUMINUM
PAINTED WHITE
Z PROFILE LONG EDGE

| Order Code | Product Type | Package Quantity |
|------------|------------------|------------------|
| 1112 | Aluminum Z 10 mm | 50 pcs x 3m |
| 1113 | Aluminum Z 15 mm | 50 pcs x 3m |
| 1114 | Aluminum Z 20 mm | 50 pcs x 3m |
| 1116 | Aluminum Z 30 mm | 50 pcs x 3m |

Product description:

It is used to prevent cracks in wide movable joints at the junctions of plasterboard suspended ceiling and partition wall systems and separate surfaces at junction points such as ceramics in wet areas.
It provides ease of use and provides visual aesthetics without making any additions to the areas where it is used.

Area of Use

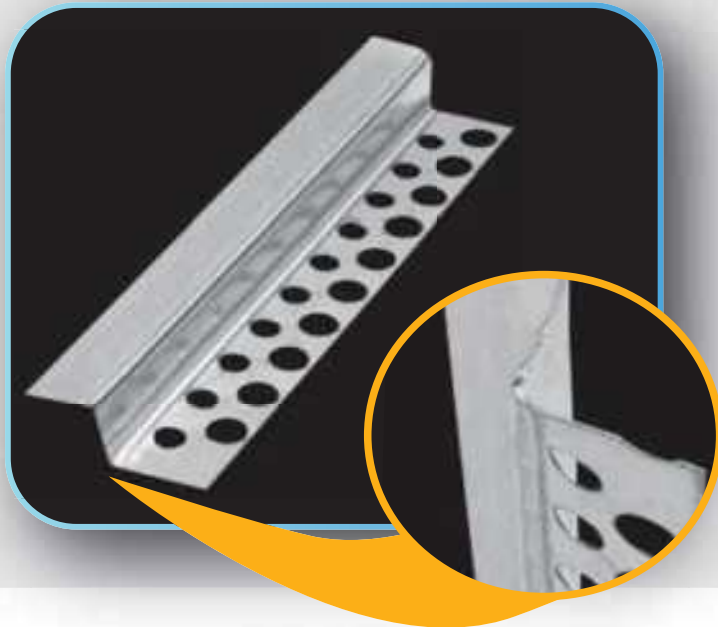
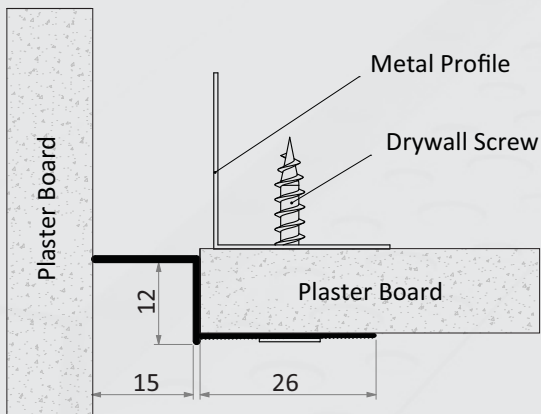
It is used in drywall, suspended ceiling and wall joints.

Product storage conditions

It is used to prevent cracks in wide movable joints at the junctions of plasterboard suspended ceiling and partition wall systems and separate surfaces at junction points such as ceramics in wet areas.
It provides ease of use and provides visual aesthetics without making any additions to the areas where it is used.

Our aluminum white painted products are in Ral 9016 code. Optional special color production can be done.

JOINT GAP AND DETAIL PROFILES



GALVANIZED Z PROFILE LONG EDGE

| Order Code | Product Type | Package Quantity |
|------------|--------------------|------------------|
| 1117 | Galvanized z 15 mm | 25 pcs/3 mt |
| 1118 | Galvanized z 10 mm | 25 pcs/3 mt |
| 1119 | Galvanized z 20 mm | 25 pcs/3 mt |

Product description:

It is used to prevent cracks in wide movable joints at the junctions of plasterboard suspended ceiling and partition wall systems and separate surfaces at junction points such as ceramics in wet areas. It provides ease of use and provides visual aesthetics without making any additions to the areas where it is used.

Area of Use

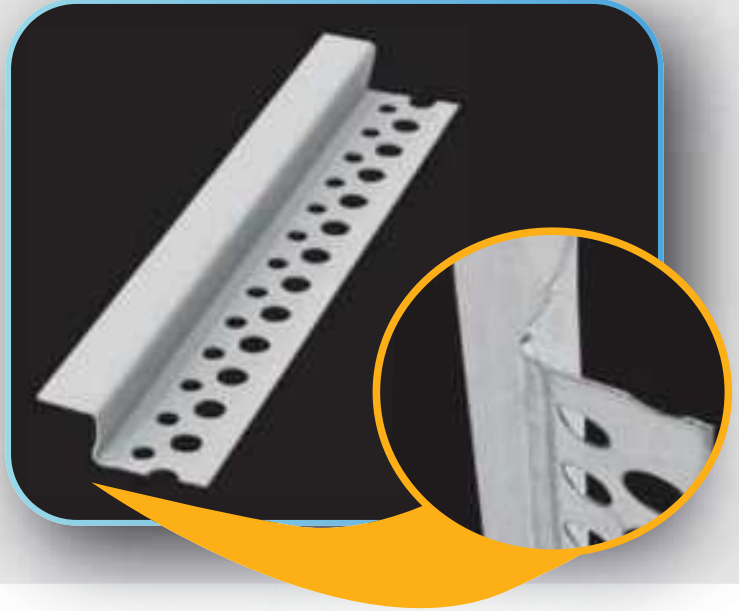
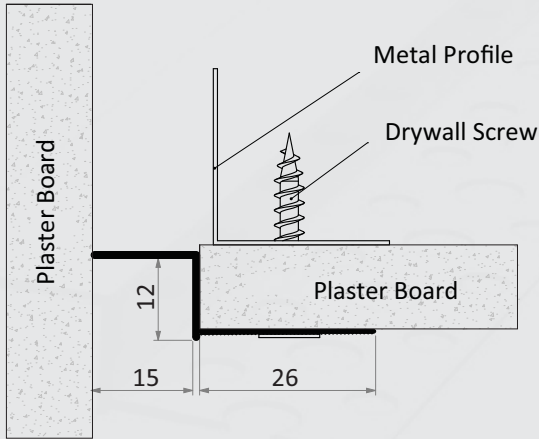
It is used in drywall, suspended ceiling and wall joints.

Product storage conditions

All joints and detail profiles are painted to avoid surface sensitivity, and galvanized profiles to avoid contact with water and in order to obtain a flat surface, it must be kept in a way that it will not be subjected to impact.

Our aluminum white painted products are in Ral 9016 code. Optional special color production can be done.

JOINT GAP AND DETAIL PROFILES



PVC Z PROFILE LONG SIDE

| Order Code | Product Type | Package Quantity |
|------------|--------------|------------------|
| 1122 | Pvc Z 15 mm | 100 pcs x 3m |

Product description:

It is used to prevent cracks in wide movable joints at the junctions of plasterboard suspended ceiling and partition wall systems and separate surfaces at junction points such as ceramics in wet areas. It provides ease of use and provides visual aesthetics without making any additions to the areas where it is used.

Area of Use

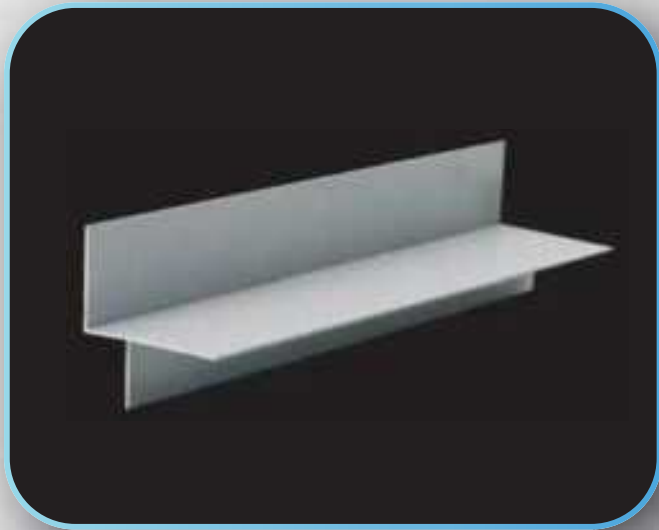
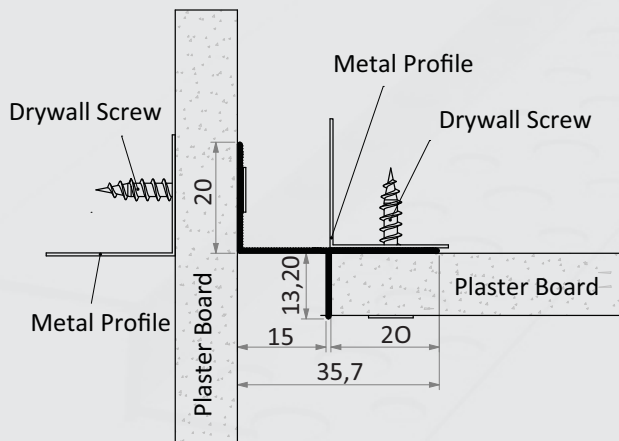
It is used in drywall, suspended ceiling and wall joints.

Product storage conditions

All joints and detail profiles are painted to avoid surface sensitivity, and galvanized profiles to avoid contact with water and in order to obtain a flat surface, it must be kept in a way that it will not be subjected to impact.

Our aluminum white painted products are in Ral 9016 code. Optional special color production can be done.

JOINT GAP AND DETAIL PROFILES



ALUMINUM T PROFILE

| Order Code | Product Type | Package Quantity |
|------------|------------------|------------------|
| 1126 | Aluminum T 10 mm | 20 pcs x 3m |
| 1127 | Aluminum T 15 mm | 20 pcs x 3m |
| 1128 | Aluminum T 20 mm | 20 pcs x 3m |
| 1129 | Aluminum T 25 mm | 20 pcs x 3m |

Product description:

It is used to prevent cracks in wide movable joints at the junctions of plasterboard suspended ceiling and partition wall systems and separate surfaces at junction points such as ceramics in wet areas. It provides ease of use and provides visual aesthetics without making any additions to the areas where it is used.

Area of Use

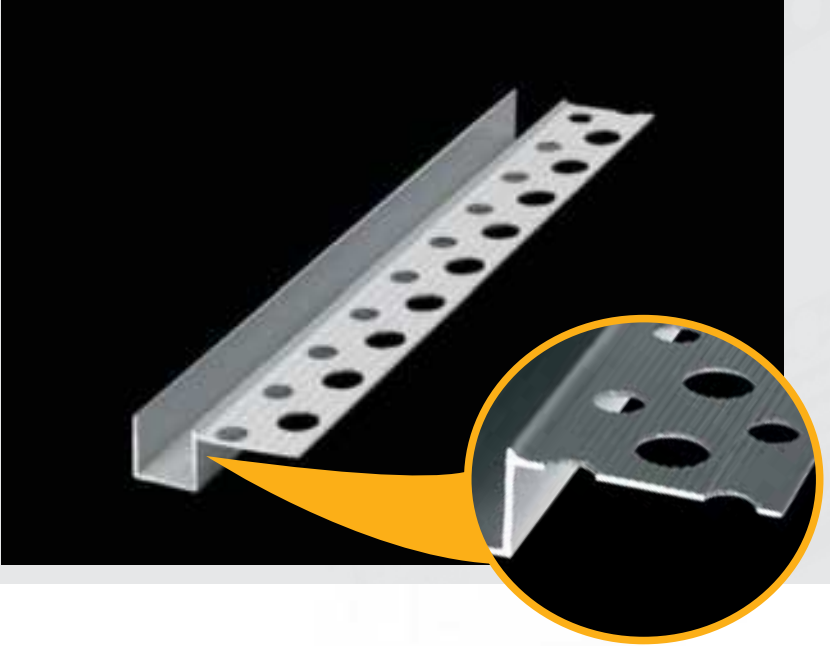
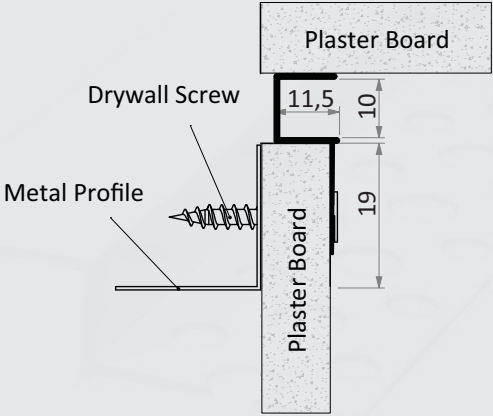
It is used in drywall, suspended ceiling and wall joints.

Product storage conditions

All joints and detail profiles are painted to avoid surface sensitivity, and galvanized profiles to avoid contact with water and in order to obtain a flat surface, it must be kept in a way that it will not be subjected to impact.

Our aluminum white painted products are in Ral 9016 code. Optional special color production can be done.

JOINT GAP AND DETAIL PROFILES



SINGLE WING JOINT GAP PROFILE SHORT EDGE

| Order Code | Product Type | Package Quantity |
|------------|---|------------------|
| 1135 | Aluminum Single Wing Gap Profile Short Edge U10 mm | 25 pcs x 3m |

Product description:

It is used to prevent cracks in wide movable joints at the junctions of plasterboard suspended ceiling and partition wall systems and separate surfaces at junction points such as ceramics in wet areas. It provides ease of use and provides visual aesthetics without making any additions to the areas where it is used.

Area of Use

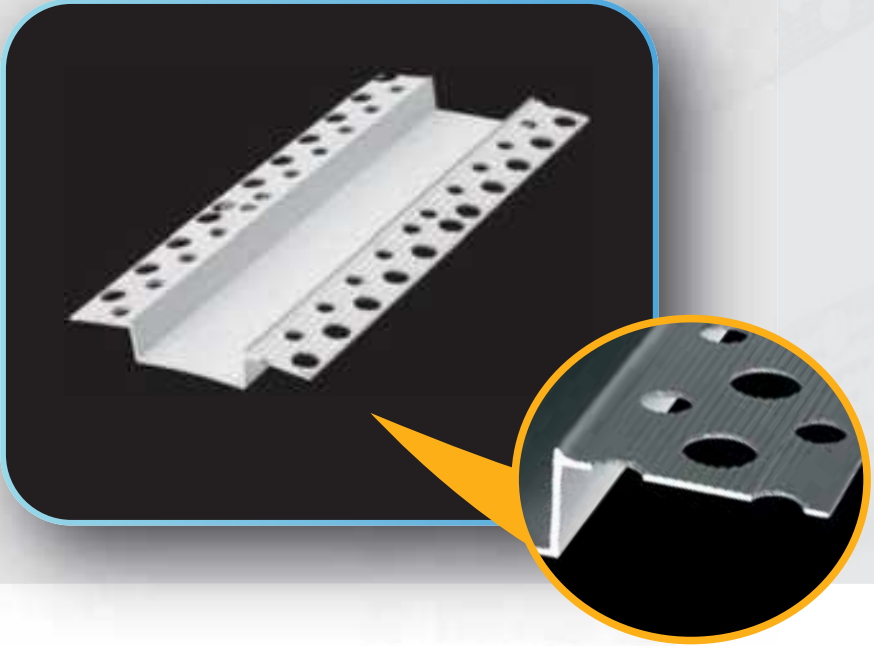
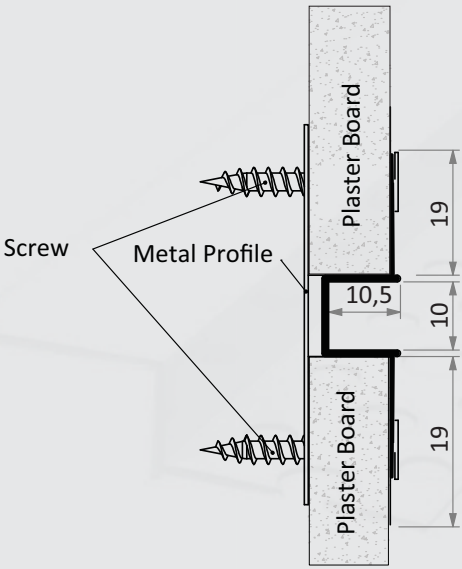
It is used in drywall, suspended ceiling and wall joints.

Product storage conditions

All joints and detail profiles are painted to avoid surface sensitivity, and galvanized profiles to avoid contact with water and in order to obtain a flat surface, it must be kept in a way that it will not be subjected to impact.

Our aluminum white painted products are in Ral 9016 code. Optional special color production can be done.

JOINT GAP AND DETAIL PROFILES



DOUBLE WING JOINT GAP PROFILE SHORT EDGE

| Order Code | Product Type | Package Quantity |
|------------|------------------------------------|---------------------|
| 1140 | Double wing gap Profile short side | 10 mm 25 size /3 mt |
| 1141 | double wing gap profile short side | 20 mm 10 size /3 mt |
| 1153 | double wing gap profile short side | 30 mm 10 size /3 mt |
| 1216 | double wing gap profile short side | 50 mm 10 size /3 mt |

Product description:

*It is used to prevent cracks in wide movable joints at the junctions of plasterboard suspended ceiling and partition wall systems and separate surfaces at junction points such as ceramics in wet areas.
It provides ease of use and provides visual aesthetics without making any additions to the areas where it is used.*

Area of Use

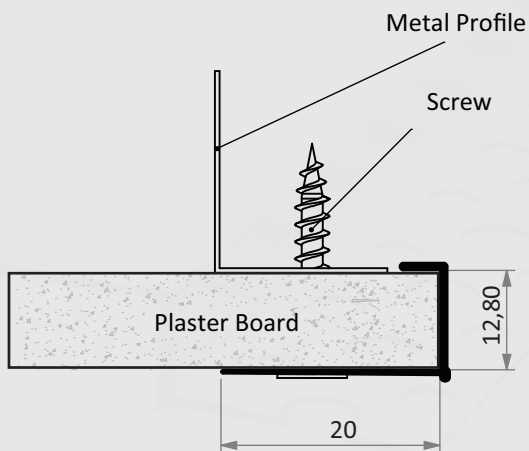
It is used in drywall, suspended ceiling and wall joints.

Product storage conditions

All joints and detail profiles are painted to avoid surface sensitivity, and galvanized profiles to avoid contact with water and in order to obtain a flat surface, it must be kept in a way that it will not be subjected to impact.

Our aluminum white painted products are in Ral 9016 code. Optional special color production can be done.

JOINT GAP AND DETAIL PROFILES



GALVANIZED DETAIL U PROFILE

| Order Code | Product Type | Package Quantity |
|------------|---------------------|------------------|
| 1143 | Galvanized Detail U | 60 pcs x 3m |
| 1217 | Galvanized Detail U | 60 pcs x 2,5m |

Product description:

It is used to create a straight and sharp line at plasterboard corner unit points and to create a hidden LED light band. It provides ease of use without making any additions to the area where it is used and provides visual aesthetics.

Area of Use

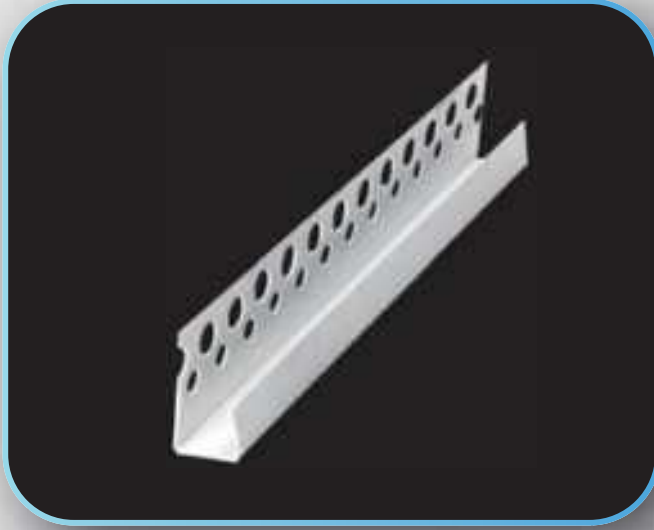
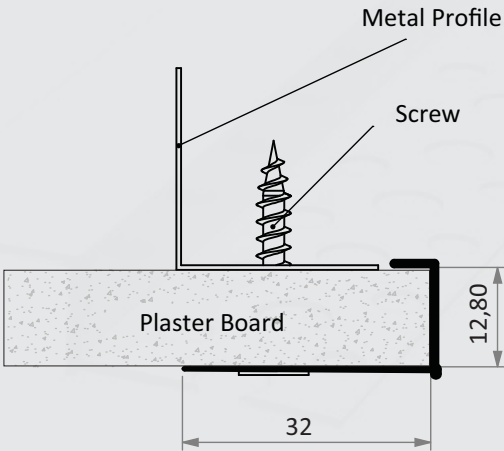
It is used in drywall, suspended ceiling and wall joints.

Product storage conditions

All joints and detail profiles are painted to avoid surface sensitivity, and galvanized profiles to avoid contact with water and in order to obtain a flat surface, it must be kept in a way that it will not be subjected to impact.

Our aluminum white painted products are in Ral 9016 code. Optional special color production can be done.

JOINT GAP AND DETAIL PROFILES



PVC DETAIL U PROFILE

Order Code
1144

Product Type
PVC Detail U

Package Quantity
50 pcs x 3m

Product description:

It is used to create a straight and sharp line at plasterboard corner unit points and to create a hidden LED light band. It provides ease of use without making any additions to the area where it is used and provides visual aesthetics.

Area of Use

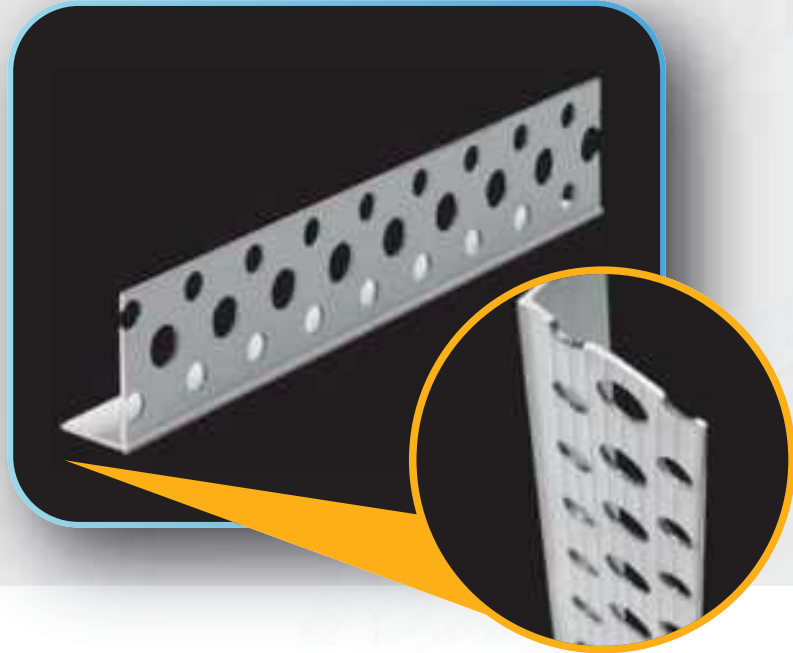
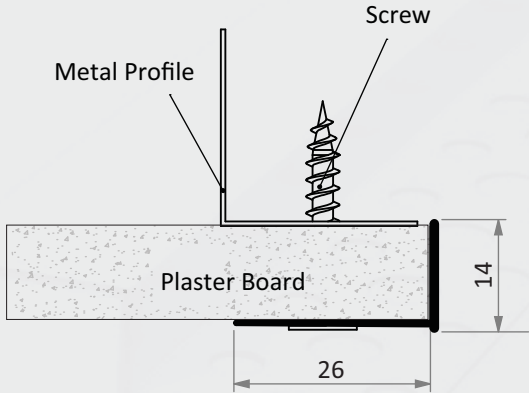
It is used in drywall, suspended ceiling and wall joints.

Product storage conditions

All joints and detail profiles are painted to avoid surface sensitivity, and galvanized profiles to avoid contact with water and in order to obtain a flat surface, it must be kept in a way that it will not be subjected to impact.

Our aluminum white painted products are in Ral 9016 code. Optional special color production can be done.

JOINT GAP AND DETAIL PROFILES



ALUMINUM WHITE PAINTED DETAIL L PROFILE

| Order Code | Product Type | Package Quantity |
|------------|---------------------------|------------------|
| 1145 | ALUMINUM PAINTED DETAIL L | 25 pcs x 3m |

Product description:

It is used to create a straight and sharp line at plasterboard corner unit points and to create a hidden LED light band. It provides ease of use without making any additions to the area where it is used and provides visual aesthetics.

Area of Use

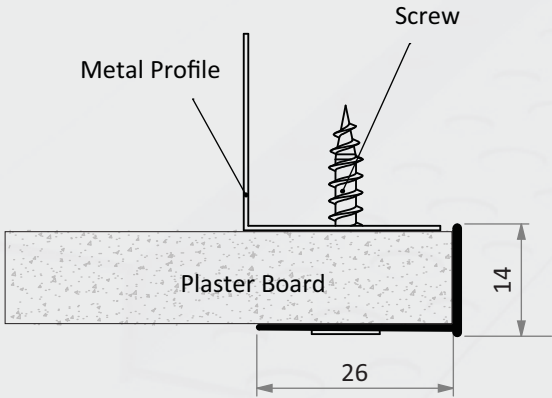
It is used in drywall, suspended ceiling and wall joints.

Product storage conditions

All joints and detail profiles are painted to avoid surface sensitivity, and galvanized profiles to avoid contact with water and in order to obtain a flat surface, it must be kept in a way that it will not be subjected to impact.

Our aluminum white painted products are in Ral 9016 code. Optional special color production can be done.

JOINT GAP AND DETAIL PROFILES



GALVANIZED DETAIL L PROFILE

| Order Code | Product Type | Package Quantity |
|------------|---------------------|------------------|
| 1147 | GALVANIZED DETAIL L | 50 pcs x 3m |

Product description:

It is used to create a straight and sharp line at plasterboard corner unit points and to create a hidden LED light band. It provides ease of use without making any additions to the area where it is used and provides visual aesthetics.

Area of Use

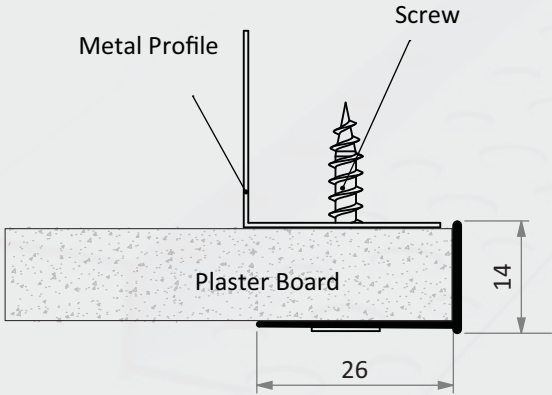
It is used in drywall, suspended ceiling and wall joints.

Product storage conditions

All joints and detail profiles are painted to avoid surface sensitivity, and galvanized profiles to avoid contact with water and in order to obtain a flat surface, it must be kept in a way that it will not be subjected to impact.

Our aluminum white painted products are in Ral 9016 code. Optional special color production can be done.

JOINT GAP AND DETAIL PROFILES



ALUMINUM DETAIL L PROFILE

Order Code
1194

Product Type
Aluminum Detail L

Package Quantity
25 pcs x 3m

Product description:

It is used to create a straight and sharp line at plasterboard corner unit points and to create a hidden LED light band. It provides ease of use without making any additions to the area where it is used and provides visual aesthetics. It does not corrode due to its raw material properties.

Area of Use

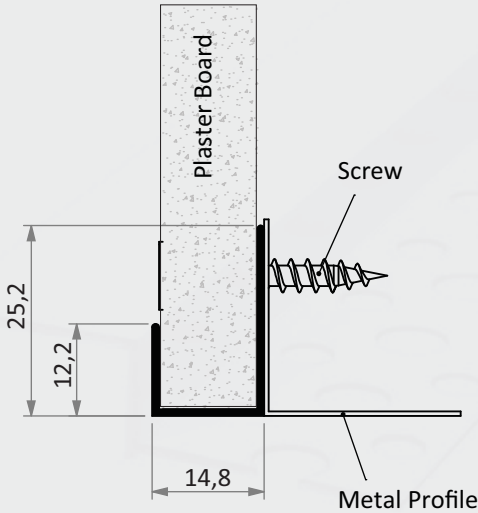
It is used in plasterboard, suspended ceiling and wall connection systems.

Product storage conditions

All joints and detail profiles are painted to avoid surface sensitivity, and galvanized profiles to avoid contact with water and in order to obtain a flat surface, it must be kept in a way that it will not be subjected to impact.

Our aluminum white painted products are in Ral 9016 code. Optional special color production can be done.

JOINT GAP AND DETAIL PROFILES



ALUMINUM CORNER END PROFILE

| Order Code | Product Type | Package Quantity |
|------------|---------------------|------------------|
| 1148 | ALUMINUM CORNER END | 50 pcs x 3m |

Product description:

It is used to create a straight and sharp line at plasterboard corner unit points and to create a hidden LED light band. It provides ease of use without making any additions to the area where it is used and provides visual aesthetics.

Area of Use

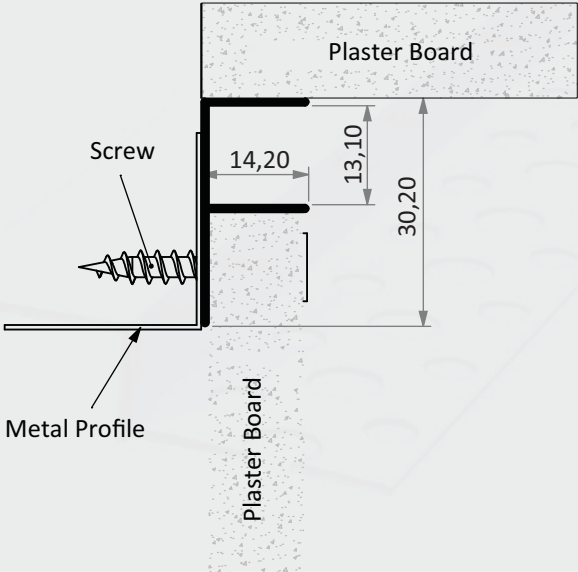
It is used in drywall, suspended ceiling and wall joints.

Product storage conditions

All joints and detail profiles are painted to avoid surface sensitivity, and galvanized profiles to avoid contact with water and in order to obtain a flat surface, it must be kept in a way that it will not be subjected to impact.

Our aluminum white painted products are in Ral 9016 code. Optional special color production can be done.

JOINT GAP AND DETAIL PROFILES



ALUMINUM F PROFILE

Order Code
1149

Product Type
ALUMINUM F

Package Quantity
20 pcs x 3m

Product description:

It is used to create a straight and sharp line at plasterboard corner unit points and to create a hidden LED light band. It provides ease of use without making any additions to the area where it is used and provides visual aesthetics.

Area of Use

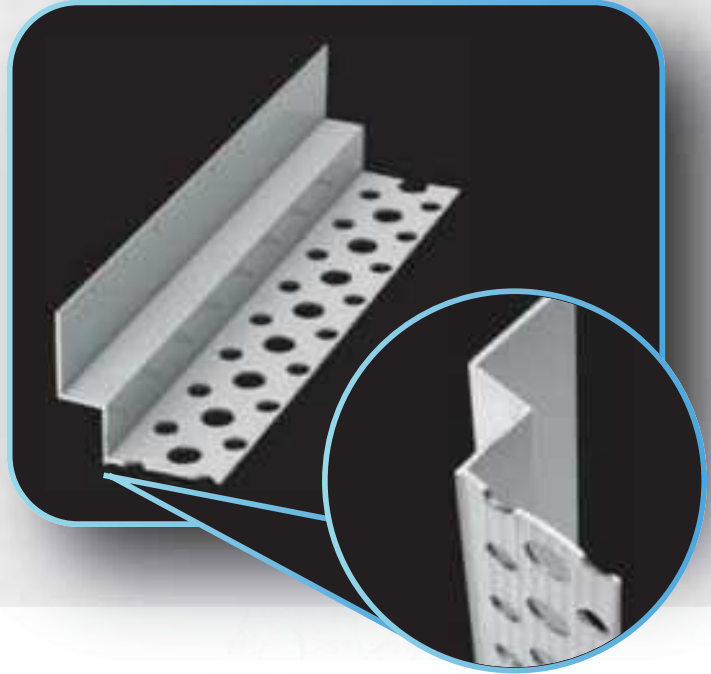
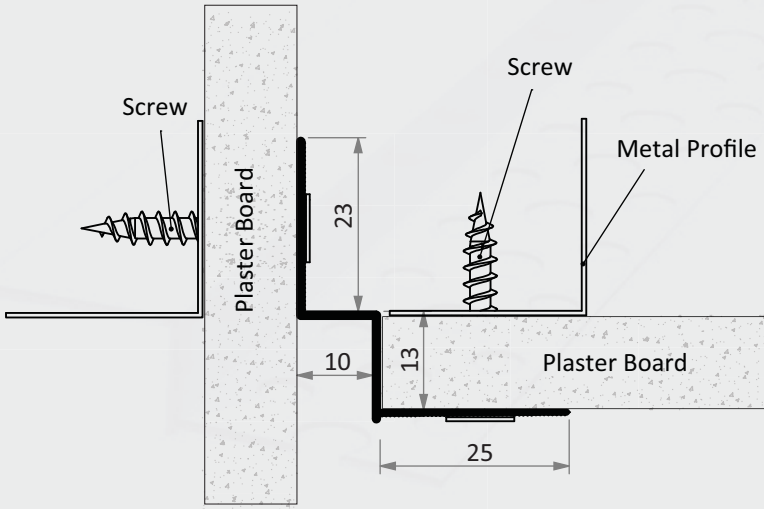
It is used in drywall, suspended ceiling and wall joints.

Product storage conditions

All joints and detail profiles are painted to avoid surface sensitivity, and galvanized profiles to avoid contact with water and in order to obtain a flat surface, it must be kept in a way that it will not be subjected to impact.

Our aluminum white painted products are in Ral 9016 code. Optional special color production can be done.

JOINT GAP AND DETAIL PROFILES



ALUMINUM GRADUAL Z PROFILE

| Order Code | Product Type | Package Quantity |
|------------|--------------------|------------------|
| 1151 | ALUMINUM GRADUAL Z | 25 pcs x 3m |

Product description:

All joints and detail profiles are painted to avoid surface sensitivity, and galvanized profiles to avoid contact with water and in order to obtain a flat surface, it must be kept in a way that it will not be subjected to impact.

Area of Use

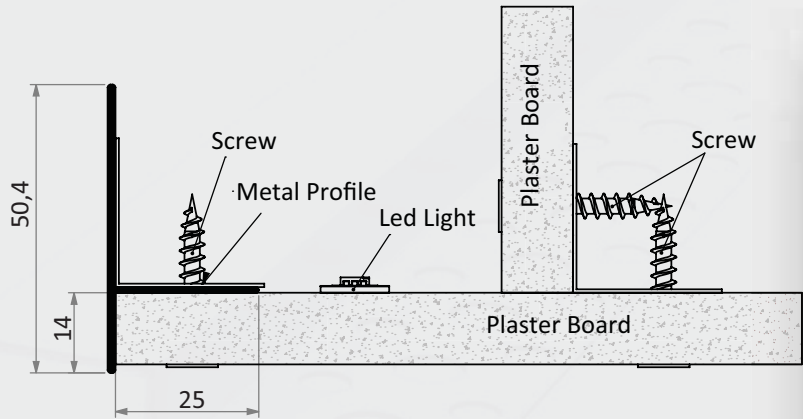
It is used in drywall, suspended ceiling and wall joints.

Product storage conditions

All joints and detail profiles are painted to avoid surface sensitivity, and galvanized profiles to avoid contact with water and in order to obtain a flat surface, it must be kept in a way that it will not be subjected to impact.

Our aluminum white painted products are in Ral 9016 code. Optional special color production can be done.

JOINT GAP AND DETAIL PROFILES



ALUMINUM HIDDEN LIGHT BAND PROFILE 50 mm

| Order Code | Product Type | Package Quantity |
|------------|----------------------------|------------------|
| 1152 | ALUMINUM HIDDEN LIGHT BAND | 20 pcs x 3m |

Product description:

It is used to create a straight and sharp line at plasterboard corner unit points and to create a hidden LED light band. It provides ease of use without making any additions to the area where it is used and provides visual aesthetics.

Area of Use

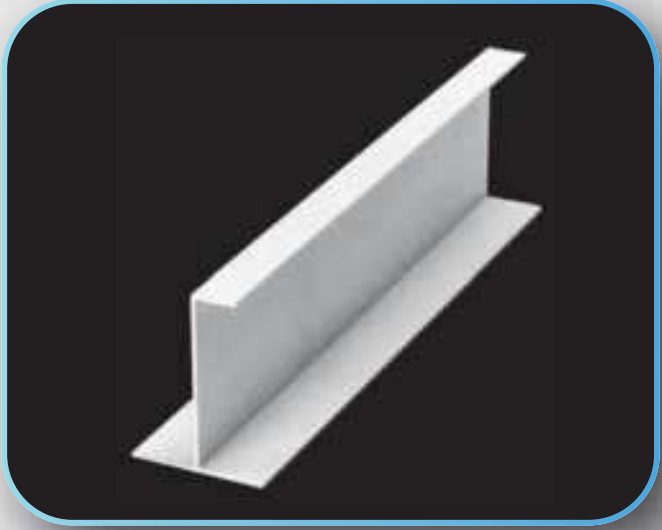
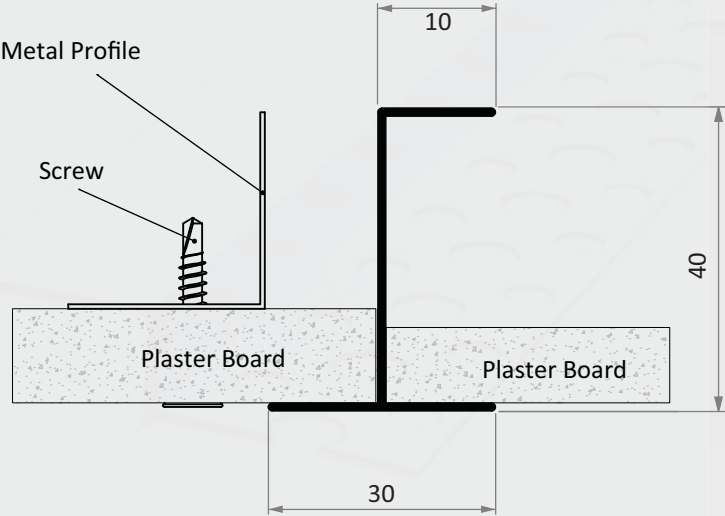
It is used in drywall, suspended ceiling and wall joints.

Product storage conditions

All joints and detail profiles are painted to avoid surface sensitivity, and galvanized profiles to avoid contact with water and in order to obtain a flat surface, it must be kept in a way that it will not be subjected to impact.

Our aluminum white painted products are in Ral 9016 code. Optional special color production can be done.

JOINT GAP AND DETAIL PROFILES



ALUMINUM CLIPINS H PROFILE

| Order Code | Product Type | Package Quantity |
|------------|--------------------|------------------|
| 1156 | ALUMINUM CLIPINS H | 20 pcs x 3m |

Product description:

It is used to create a straight and sharp line at plasterboard corner unit points and to create a hidden LED light band. It provides ease of use without making any additions to the area where it is used and provides visual aesthetics.

Area of Use

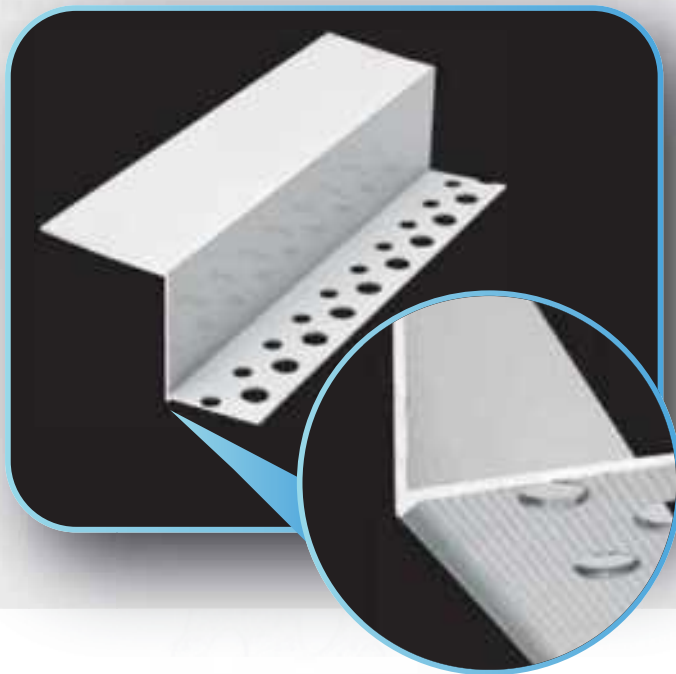
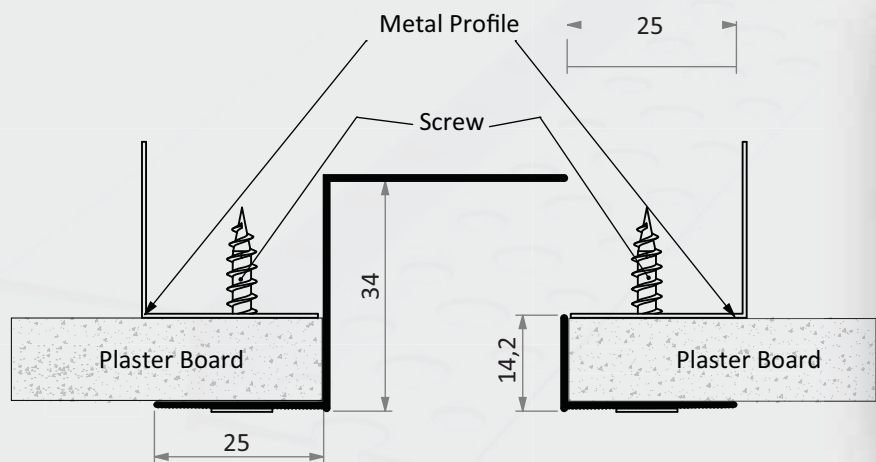
It is used in drywall, suspended ceiling and wall joints.

Product storage conditions

All joints and detail profiles are painted to avoid surface sensitivity, and galvanized profiles to avoid contact with water and in order to obtain a flat surface, it must be kept in a way that it will not be subjected to impact.

Our aluminum white painted products are in Ral 9016 code. Optional special color production can be done.

JOINT GAP AND DETAIL PROFILES



ALUMINUM DILETATION PROFILE

| Order Code | Product Type | Package Quantity |
|------------|--------------------------------|------------------|
| 1158 | Aluminum Dilatation Transition | 25 pcs x 3m |

Product description:

It is used to create a straight and sharp line at plasterboard corner unit points and to create a hidden LED light band. It provides ease of use without making any additions to the area where it is used and provides visual aesthetics.

Area of Use

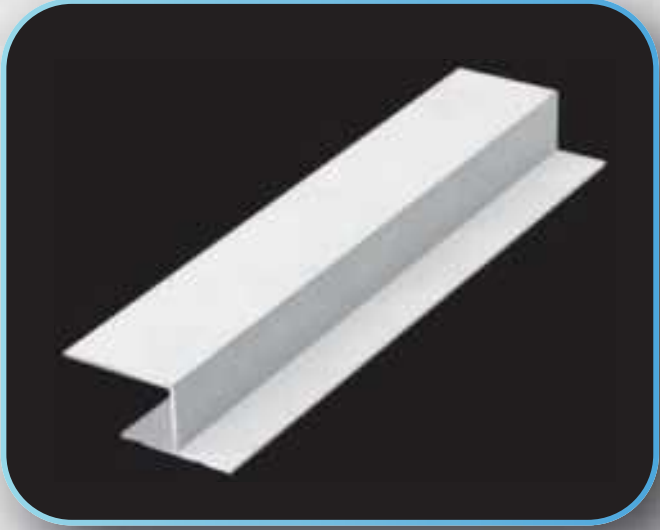
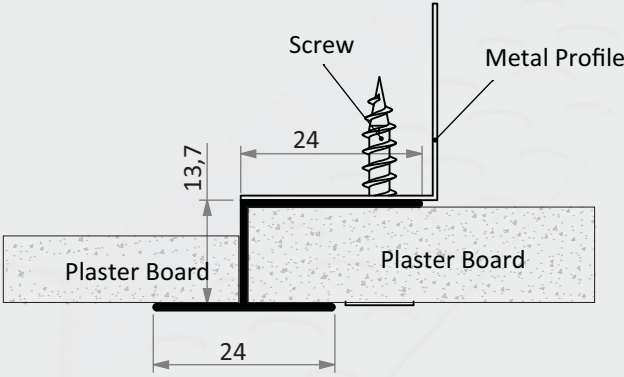
It is used in drywall, suspended ceiling and wall joints.

Product storage conditions

All joints and detail profiles are painted to avoid surface sensitivity, and galvanized profiles to avoid contact with water and in order to obtain a flat surface, it must be kept in a way that it will not be subjected to impact.

Our aluminum white painted products are in Ral 9016 code. Optional special color production can be done.

JOINT GAP AND DETAIL PROFILES



ALUMINUM PANEL PLATE U TRANSITION PROFILE

| Order Code | Product Type | Package Quantity |
|------------|--------------------------------------|------------------|
| 1161 | ALUMINUM PANEL PLATE U TRANSITION | 20 pcs x 3m |

Product description:

It is used to create a straight and sharp line at plasterboard corner unit points and to create a hidden LED light band. It provides ease of use without making any additions to the area where it is used and provides visual aesthetics.

Area of Use

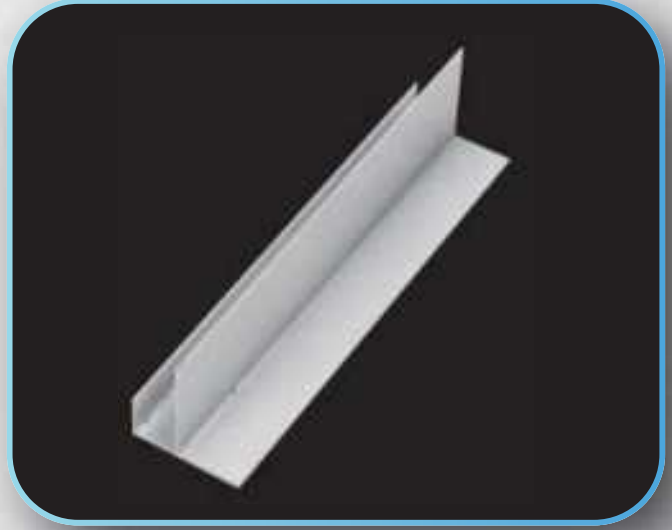
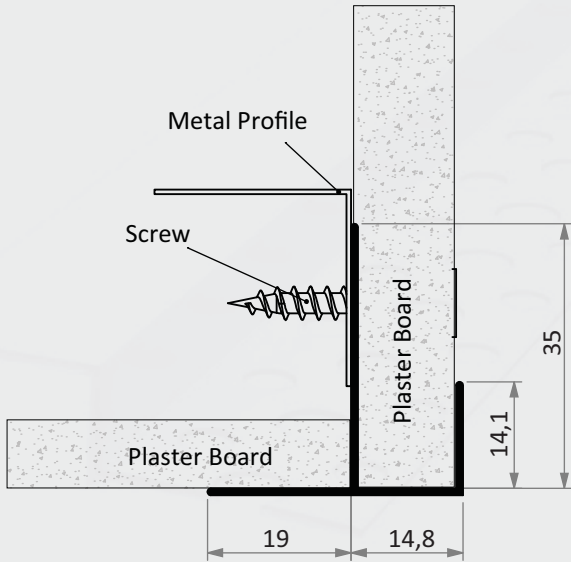
It is used in drywall, suspended ceiling and wall joints.

Product storage conditions

All joints and detail profiles are painted to avoid surface sensitivity, and galvanized profiles to avoid contact with water and in order to obtain a flat surface, it must be kept in a way that it will not be subjected to impact.

Our aluminum white painted products are in Ral 9016 code. Optional special color production can be done.

JOINT GAP AND DETAIL PROFILES



ALUMINUM DRYWALL FRAME CORNER TRANSITION PROFILE

| Order Code | Product Type | Package Quantity |
|------------|---|------------------|
| 1162 | ALUMINUM DRYWALL FRAME CORNER TRANSITION | 20 pcs x 3m |

Product description:

It is used to create a straight and sharp line at plasterboard corner unit points and to create a hidden LED light band. It provides ease of use without making any additions to the area where it is used and provides visual aesthetics.

Area of Use

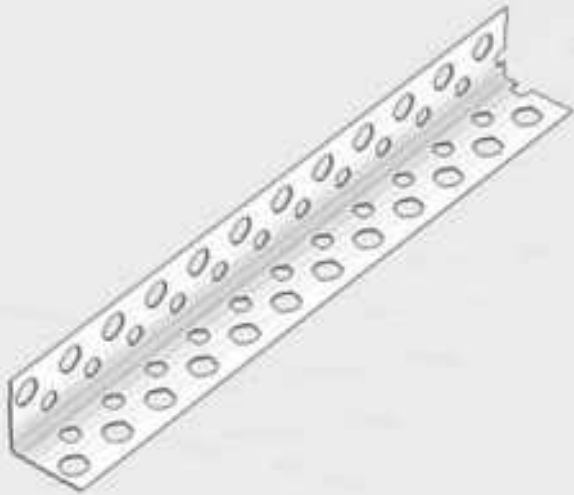
It is used in drywall, suspended ceiling and wall joints.

Product storage conditions

All joints and detail profiles are painted to avoid surface sensitivity, and galvanized profiles to avoid contact with water and in order to obtain a flat surface, it must be kept in a way that it will not be subjected to impact.

Our aluminum white painted products are in Ral 9016 code. Optional special color production can be done.

JOINT GAP AND DETAIL PROFILES



PERFORATED GALVANIZED CORNER PROFILE

| Order Code | Product Type | Package Quantity |
|------------|------------------------------------|------------------|
| 1175 | 19x19 perforated galvanized corner | 50 pcs x 2.70 mt |
| 1176 | 19x19 perforated galvanized corner | 50 pcs x 3.00 mt |
| 1183 | 23x23 perforated galvanized corner | 50 pcs x 2.70 mt |
| 1183 | 23x23 perforated galvanized corner | 50 pcs x 3.00 mt |

Product description:

Creating a smooth line at corner joints in plasterboard partition wall systems and increasing resistance to impacts.

Area of Use

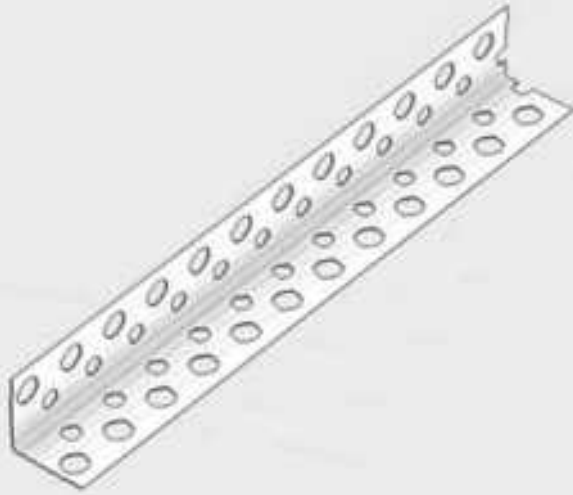
It is used in drywall, suspended ceiling and wall joints.

Product storage conditions

All joints and detail profiles are painted to avoid surface sensitivity, and galvanized profiles to avoid contact with water and in order to obtain a flat surface, it must be kept in a way that it will not be subjected to impact.

Our aluminum white painted products are in Ral 9016 code. Optional special color production can be done.

JOINT GAP AND DETAIL PROFILES



PERFORATED CORNER PROFILE ALUMINUM

| Order Code | Product Type | Package Quantity |
|------------|---------------------------|------------------|
| 1188 | 21x21 ALM PERFORATED EDGE | 50 pcs x 2,70 mt |
| 1181 | 21x21 ALM PERFORATED EDGE | 50 pcs x 3.00 mt |
| 1200 | 23x23 ALM PERFORATED EDGE | 50 pcs x 2,70 mt |
| 1201 | 23x23 ALM PERFORATED EDGE | 50 pcs x 3.00 mt |

Product description:

Creating a smooth line at corner joints in plasterboard partition wall systems and increasing resistance to impacts.

Area of Use

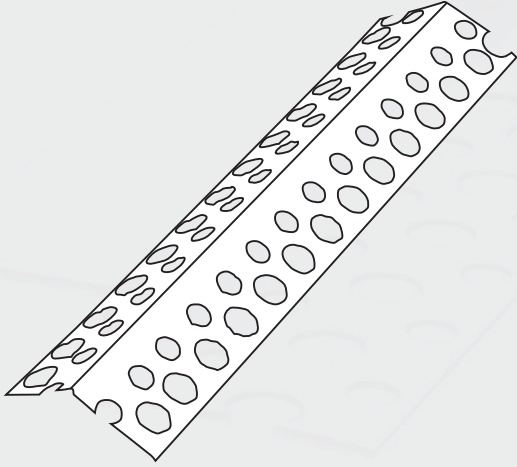
It is used in drywall, suspended ceiling and wall joints.

Product storage conditions

All joints and detail profiles are painted to avoid surface sensitivity, and galvanized profiles to avoid contact with water and in order to obtain a flat surface, it must be kept in a way that it will not be subjected to impact.

Our aluminum white painted products are in Ral 9016 code. Optional special color production can be done.

JOINT GAP AND DETAIL PROFILES



GALVANIZED 135° ANGLE PERFORATED CORNER PROFILE

Order Code

1186

Product Type

135° Angled Perforated
Corner Profile Galvanized

Package Quantity

50 pcs x 2,70 m.

Product description:

Creating a smooth line at corner joints in plasterboard partition wall systems and increasing resistance to impacts.

Area of Use

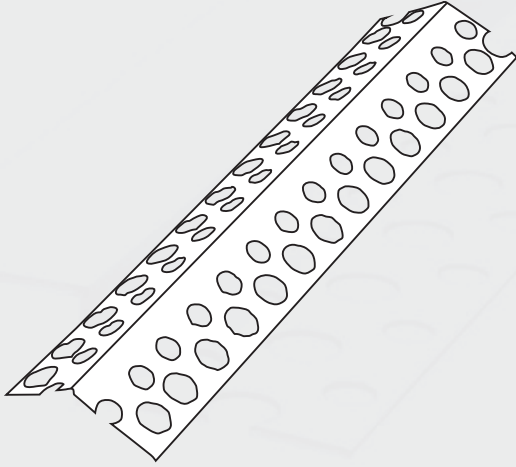
It is used in drywall, suspended ceiling and wall joints.

Product storage conditions

All joints and detail profiles are painted to avoid surface sensitivity, and galvanized profiles to avoid contact with water and in order to obtain a flat surface, it must be kept in a way that it will not be subjected to impact.

Our aluminum white painted products are in Ral 9016 code. Optional special color production can be done.

JOINT GAP AND DETAIL PROFILES



ALUMINUM 135° ANGLE HOLE CORNER PROFILE

| Order Code | Product Type | Package Quantity |
|------------|--|------------------|
| 1228 | 135° Angled Perforated Corner Profile Aluminum | 50 pcs x 2,70 m. |

Product description:

Creating a smooth line at corner joints in plasterboard partition wall systems and increasing resistance to impacts. It does not corrode due to its raw material properties.

Area of Use

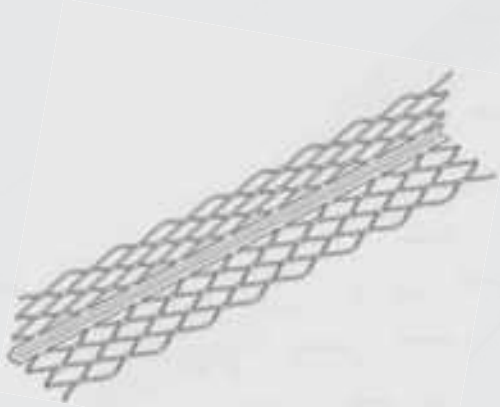
It is used in drywall, suspended ceiling and wall joints.

Product storage conditions

All joints and detail profiles are painted to avoid surface sensitivity, and galvanized profiles to avoid contact with water and in order to obtain a flat surface, it must be kept in a way that it will not be subjected to impact.

Our aluminum white painted products are in Ral 9016 code. Optional special color production can be done.

JOINT GAP AND DETAIL PROFILES



DIAMOND-SHAPED CORNER PROFILE

| Order Code | Product Type | Package Quantity |
|------------|--|------------------|
| 1184 | Diamond shaped corner profile galvanized | 25 pcs x 2,70 m. |
| 1191 | Diamond shaped corner profile galvanized | 25 pcs x 3 m. |

Product description:

Creating a smooth line at corner joints in plasterboard partition wall systems and increasing resistance to impacts. Thanks to its diamond-shaped edges, it becomes easier to hold mortar.

Area of Use

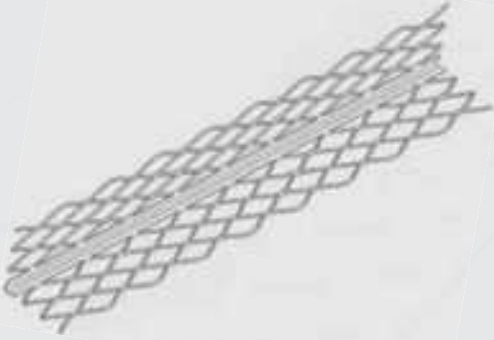
It is used in drywall, suspended ceiling and wall joints.

Product storage conditions

All joints and detail profiles are painted to avoid surface sensitivity, and galvanized profiles to avoid contact with water and in order to obtain a flat surface, it must be kept in a way that it will not be subjected to impact.

Our aluminum white painted products are in Ral 9016 code. Optional special color production can be done.

JOINT GAP AND DETAIL PROFILES



ALUMINUM DIAMOND-SHAPED CORNER PROFILE

| Order Code | Product Type | Package Quantity |
|------------|--|------------------|
| 1190 | Diamond shaped corner profile ALUMINUM | 25 pcs x 2,70 m. |
| 1182 | Diamond shaped corner profile ALUMINUM | 25 pcs x 3 m. |

Product description:

Creating a smooth line at corner joints in plasterboard partition wall systems and increasing resistance to impacts. It does not corrode due to its raw material properties. Thanks to its diamond-shaped edges, it becomes easier to hold mortar.

Area of Use

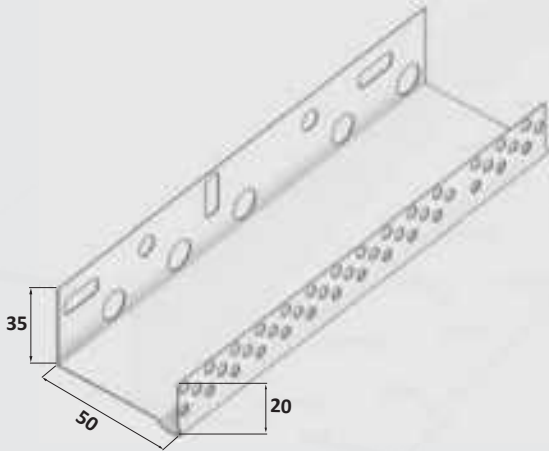
It is used in drywall, suspended ceiling and wall joints.

Product storage conditions

All joints and detail profiles are painted to avoid surface sensitivity, and galvanized profiles to avoid contact with water and in order to obtain a flat surface, it must be kept in a way that it will not be subjected to impact.

Our aluminum white painted products are in Ral 9016 code. Optional special color production can be done.

JOINT GAP AND DETAIL PROFILES



ALUMINUM WATER BASE PROFILE

| Order Code | Product Type | Package Quantity |
|------------|---------------------------|------------------|
| 1400 | 30 mm WATER BASE PROFILE | 8 pcs x 2,50 m |
| 1401 | 50 mm WATER BASE PROFILE | 8 pcs x 2,50 m |
| 1402 | 70 mm WATER BASE PROFILE | 8 pcs x 2,50 m |
| 1403 | 80 mm WATER BASE PROFILE | 8 pcs x 2,50 m |
| 1404 | 100 mm WATER BASE PROFILE | 8 pcs x 2,50 m |
| 1405 | 140 mm WATER BASE PROFILE | 8 pcs x 2,50 m |

Product description:

In order to determine the starting levels of thermal insulation boards, to protect the finish at the bottom and, when necessary, at the side. It is the reference profile used for this purpose. Its widths vary depending on the insulation thickness.

Area of Use

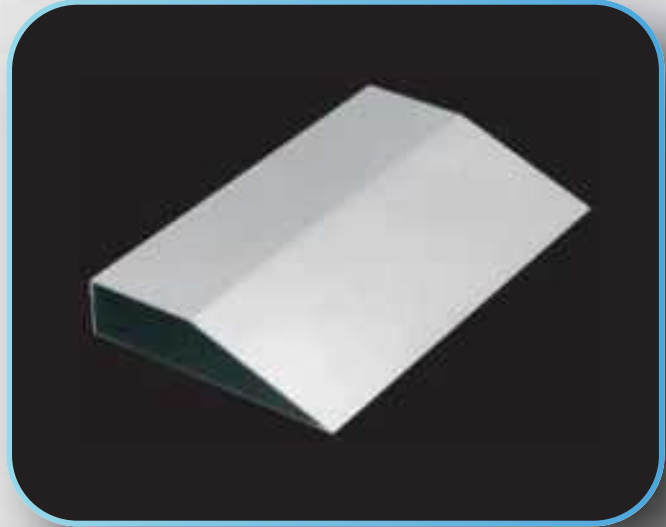
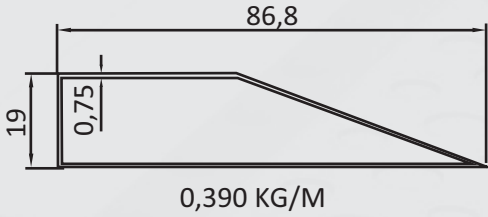
It is used in exterior mountings.

Product storage conditions

All joints and detail profiles are painted to avoid surface sensitivity, and galvanized profiles to avoid contact with water and in order to obtain a flat surface, it must be kept in a way that it will not be subjected to impact.

Our aluminum white painted products are in Ral 9016 code. Optional special color production can be done.

JOINT GAP AND DETAIL PROFILES



KNIFE GAUGE

| Order Code | Product Type | Package Quantity |
|------------|--------------|------------------|
| 1165 | KNIFE GAUGE | 10 pcs x 3m |

Product description:

It is used to prevent cracks in wide and moving joints at plasterboard ceiling joints. It provides ease of use without making any additions to the areas where it is used and provides visual aesthetics in the area where it is used.

Area of Use

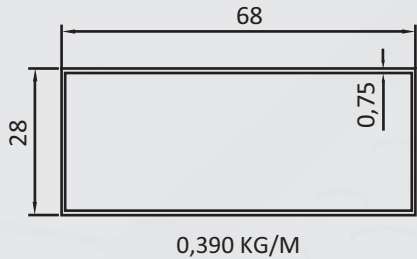
It is used in drywall, suspended ceiling and wall joints.

Product storage conditions

All joints and detail profiles are painted to avoid surface sensitivity, and galvanized profiles to avoid contact with water and in order to obtain a flat surface, it must be kept in a way that it will not be subjected to impact.

Our aluminum white painted products are in Ral 9016 code. Optional special color production can be done.

JOINT GAP AND DETAIL PROFILES



BOX GAUGES

| Order Code | Product Type | Package Quantity |
|------------|--------------------|------------------|
| 1171 | BOX GAUGE 30x70 mm | 10 pcs x 3m |

Product description:

It is used to prevent cracks in wide and moving joints at plasterboard ceiling joints. It provides ease of use without making any additions to the areas where it is used and provides visual aesthetics in the area where it is used.

Area of Use

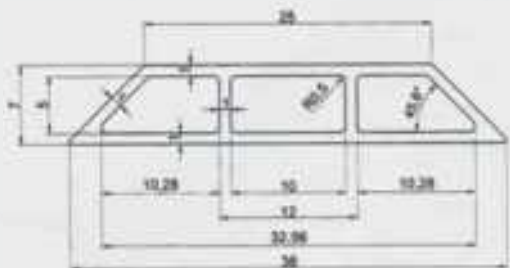
It is used in drywall, suspended ceiling and wall joints.

Product storage conditions

All joints and detail profiles are painted to avoid surface sensitivity, and galvanized profiles to avoid contact with water and in order to obtain a flat surface, it must be kept in a way that it will not be subjected to impact.

Our aluminum white painted products are in Ral 9016 code. Optional special color production can be done.

JOINT GAP AND DETAIL PROFILES



Plaster Strip Bar

| Order Code | Product Type | Package Quantity |
|------------|----------------------------|------------------|
| 1166 | Plaster Strip Bar 5 mm | 30 pcs x 3m |
| 1167 | Plaster Strip Bar 7 mm | 30 pcs x 3m |
| 1169 | Plaster Strip Bar 7 mm | 30 pcs x 2,70m |
| 1170 | Plaster Strip Bar 7 mm | 30 pcs x 2,70m |
| 1171 | Plaster Strip Bar 7 mm | 30 pcs x 3m |
| 1172 | Plaster Strip Bar 7 mm PRO | 30 pcs x 2.70 m |
| 1173 | Plaster Strip Bar 7 mm PRO | 30 pcs x 3 m |

Product description:

It is a profile that can be used more than once to eliminate wall curves during the plastering process.

Area of Use

It is used in wall plaster applications.

Product storage conditions

All joints and detail profiles are painted to avoid surface sensitivity, and galvanized profiles to avoid contact with water and in order to obtain a flat surface, it must be kept in a way that it will not be subjected to impact.

Our aluminum white painted products are in Ral 9016 code. Optional special color production can be done.

JOINT GAP AND DETAIL PROFILES



GALVANIZED FLUSH MOUNTED PLASTER STRIP BAR

| Order Code | Product Type | Package Quantity |
|------------|-------------------------|------------------|
| 1230 | Plaster Strip Bar 6 mm | 50 pcs x 2,70 m |
| 1231 | Plaster Strip Bar 10 mm | 50 pcs x 2,70 m |
| 1232 | Plaster Strip Bar 6 mm | 50 pcs x 3 m |
| 1233 | Plaster Strip Bar 10 mm | 50 pcs x 3 m |

Product description:

Thanks to the flush-mounted galvanized plaster strip that remains under the plaster, a surface of the same thickness is obtained at every point. The final surface allows flawless plaster application. Based on the application, the distance between the profiles should be at least 180 cm.

Area of Use

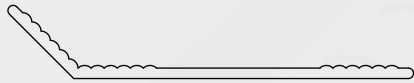
It is used in wall plaster applications.

Product storage conditions

All joints and detail profiles are painted to avoid surface sensitivity, and galvanized profiles to avoid contact with water and in order to obtain a flat surface, it must be kept in a way that it will not be subjected to impact.

Our aluminum white painted products are in Ral 9016 code. Optional special color production can be done.

JOINT GAP AND DETAIL PROFILES



DILITATION PRESSURE BAR

Order Code

2920

Product Type

Single Lugged

Package Quantity

50 pcs x 3m

Product description:

It is used as a starting and ending profile in membrane applications. Prevents leakage when applied with membrane adhesive.

Area of Use

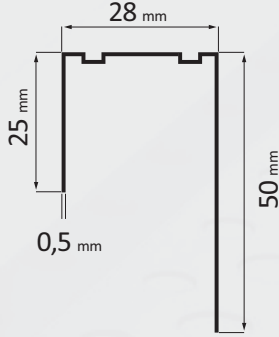
It is used for fixing the drainage plate in curtain insulation and membrane applications.

Product storage conditions

All joints and detail profiles are painted to avoid surface sensitivity, and galvanized profiles to avoid contact with water and in order to obtain a flat surface, it must be kept in a way that it will not be subjected to impact.

Our aluminum white painted products are in Ral 9016 code. Optional special color production can be done.

JOINT GAP AND DETAIL PROFILES



GALVANIZED LAME U PROFILE

| Order Code | Product Type | Package Quantity |
|------------|----------------|------------------|
| 1219 | LAME U PROFILE | 24 pcs x 3m |

Product description:

It is the profile used in plasterboard ceiling applications.

Area of Use

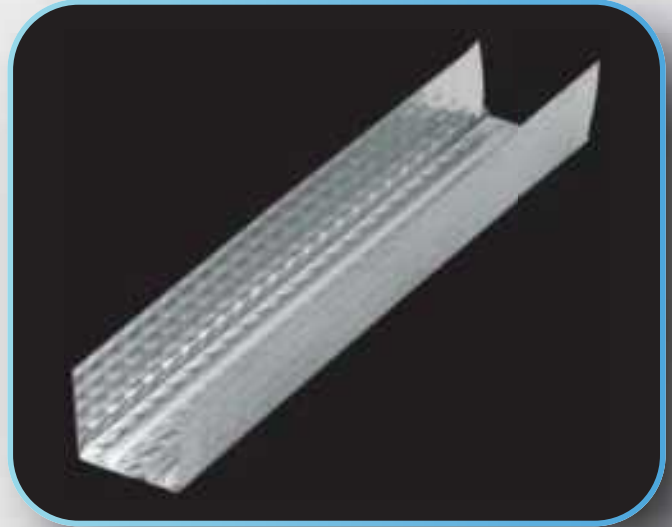
It is used for fixing the drainage plate in curtain insulation and membrane applications.

Product storage conditions

All joints and detail profiles are painted to avoid surface sensitivity, and galvanized profiles to avoid contact with water and in order to obtain a flat surface, it must be kept in a way that it will not be subjected to impact.

Our aluminum white painted products are in Ral 9016 code. Optional special color production can be done.

JOINT GAP AND DETAIL PROFILES



GALVANIZED CEILING U PROFILE

| Order Code | Product Type | Package Quantity |
|------------|-------------------|------------------|
| 1803 | CEILING U PROFILE | 24 pcs x 3m |

Product description:

It is the profile used in plasterboard ceiling applications.

Area of Use

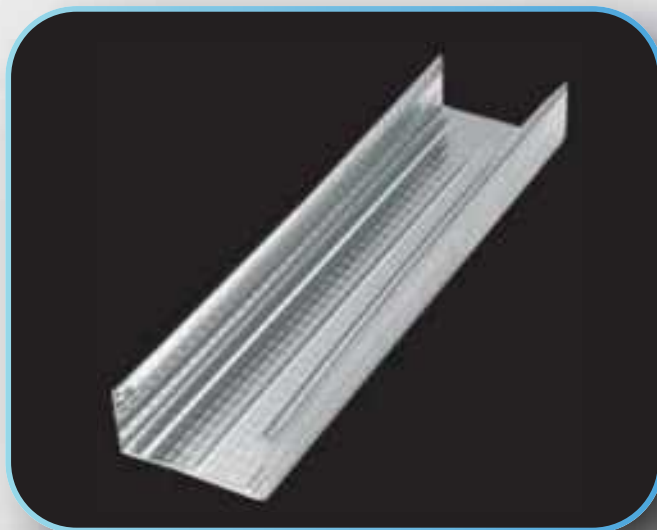
It is used in plasterboard and suspended ceiling systems.

Product storage conditions

All joints and detail profiles are painted to avoid surface sensitivity, and galvanized profiles to avoid contact with water and in order to obtain a flat surface, it must be kept in a way that it will not be subjected to impact.

Our aluminum white painted products are in Ral 9016 code. Optional special color production can be done.

JOINT GAP AND DETAIL PROFILES



GALVANIZED CEILING C PROFILE

| Order Code | Product Type | Package Quantity |
|------------|-------------------|------------------|
| 1804 | CEILING C PROFILE | 12 pcs x 3m |

Product description:

It is the profile used in plasterboard ceiling applications.

Area of Use

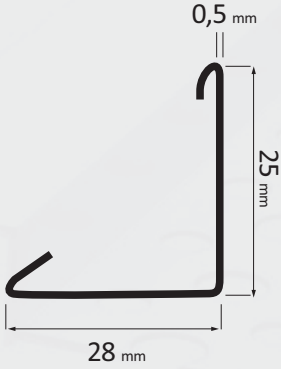
It is used in plasterboard and suspended ceiling systems.

Product storage conditions

All joints and detail profiles are painted to avoid surface sensitivity, and galvanized profiles to avoid contact with water and in order to obtain a flat surface, it must be kept in a way that it will not be subjected to impact.

Our aluminum white painted products are in Ral 9016 code. Optional special color production can be done.

JOINT GAP AND DETAIL PROFILES



GALVANIZED PAINTED T 24 L CORNER PROFILE

Order Code
1805

Product Type
T 24 L CORNER

Package Quantity
50 pcs x 3 m.

Product description:

It is the corner profile used in Modular Suspended ceiling systems.

Area of Use

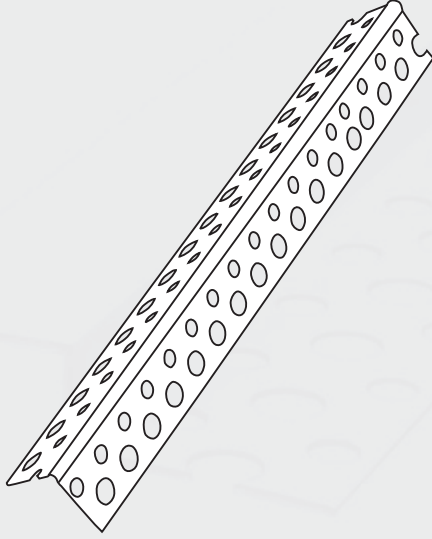
It is used in modular suspended ceiling systems.

Product storage conditions

All joints and detail profiles are painted to avoid surface sensitivity, and galvanized profiles to avoid contact with water and in order to obtain a flat surface, it must be kept in a way that it will not be subjected to impact.

Our aluminum white painted products are in Ral 9016 code. Optional special color production can be done.

JOINT GAP AND DETAIL PROFILES



PVC PERFORATED CORNER PROFILE

| Order Code | Product Type | Package Quantity |
|------------|-----------------------|------------------|
| 1806 | PVC PERFORATED CORNER | 50 pcs x 3m |

Product description:

Creating a smooth line at corner joints in plasterboard partition wall systems and increasing resistance to impacts. It does not corrode due to its raw material properties.

Area of Use

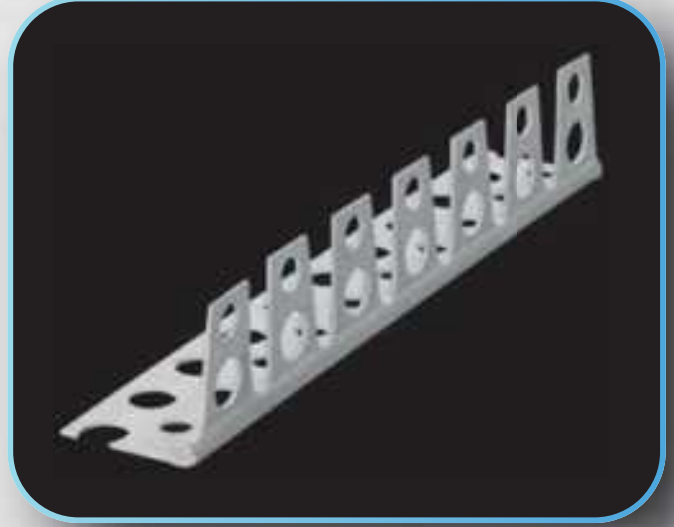
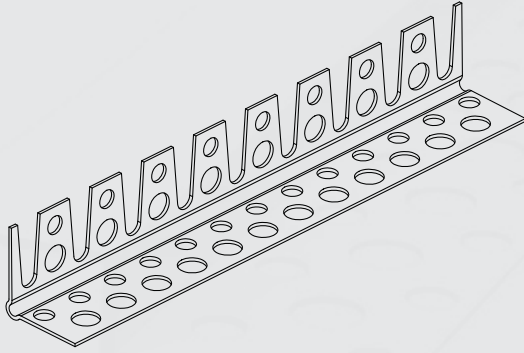
It is used in plasterboard and suspended ceiling, partition and wall joints.

Product storage conditions

All joints and detail profiles are painted to avoid surface sensitivity, and galvanized profiles to avoid contact with water and in order to obtain a flat surface, it must be kept in a way that it will not be subjected to impact.

Our aluminum white painted products are in Ral 9016 code. Optional special color production can be done.

JOINT GAP AND DETAIL PROFILES



PVC CUT CORNER PROFILE

| Order Code | Product Type | Package Quantity |
|------------|----------------|------------------|
| 1164 | PVC CUT CORNER | 100 pcs x 2,5m |

Product description:

It is the profile used to make curved corners resistant to impacts in suspended ceiling systems.

Area of Use

It is used in plasterboard, suspended ceiling and wall connection systems.

Product storage conditions

All joints and detail profiles are painted to avoid surface sensitivity, and galvanized profiles to avoid contact with water and in order to obtain a flat surface, it must be kept in a way that it will not be subjected to impact.

Our aluminum white painted products are in Ral 9016 code. Optional special color production can be done.



PROAKS METAL

Proaks Metal Yapı Sistemleri San. Tic. Ltd. Şti.

Beylikdüzü, Birlik Sanayi Sitesi 5. Cadde No:29 PK: 34524 İstanbul TÜRKİYE

Tel: 0090 212 541 0924
info@proaksmetal.com.tr

Faks: 0090 212 426 7803
www.proaksmetal.com.tr

