

A Leading manufacturer of **GFO Fire Safety Equipment's**
Since 2019

GFO AUTOMATIC Fire Safety Presentation

We are the biggest manufacturer,
supplier, exporter of Automatic Fire
Safety Products



ABOUT US

Introduction

Fire And Personal Safety Enterprises Is A Leading Company In The Fire Protection Industry. We Are Manufacturer Of Automatic Fire safety device. A business that was established in 2019. We are dedicated to manufacturing high-quality fire extinguisher device as well as providing world-class fire extinguisher equipment services. We have many new Innovative products in fire safety sector



The background of the slide features a dramatic, high-contrast image. At the top and bottom, there are horizontal bands of bright, intense fire with orange and yellow flames. Between these bands, the background is a dark, almost black, surface with a network of glowing, reddish-orange cracks, resembling cooled lava or parched earth. The overall effect is one of danger and resilience.

OUR MISSION

At fire and personal safety our mission is to design, develop, and deliver cutting-edge fire safety devices that empower individuals, organizations, and communities to mitigate risks, save lives, and protect property from the devastating effects of fire hazards. We are committed to providing innovative solutions that prioritize safety, reliability, and ease of use, while upholding the highest standards of quality, integrity, and customer satisfaction.

OUR VISION

We always want to find out the 100% solution to the risk of fire because the existing systems of fire extinguishing are not efficient. We believe in Upgradation Of The Technology & Innovation Of New Products In Fire Safety Sectors

Growth

We envision our impact extending beyond borders, reaching communities around the globe irrespective of geographical or socioeconomic barriers. By establishing strategic partnerships, expanding our presence in key markets, and fostering collaborations with international organizations, we aim to create a safer world for generations to come.

Ongoing Partnership

With years of experience in the fire safety industry, Fire and personal safety enterprises has earned a reputation for excellence and reliability. Countless businesses and organizations trust our products to safeguard their assets and personnel from the threat of fires, making us a trusted partner in fire safety With the increasing focus on fire safety and the need for reliable fire suppression solutions, the demand for GFO fire extinguisher balls is rapidly growing. By becoming a distributor, you can tap into this vast market potential and benefit from recurring sales and long-term partnerships

OUR INNOVATIVE FIRE SAFETY PRODUCTS



GFO AUTOMATIC FIREBALL



**GFO FIRE
FIGHTER DRUM**



**GFO EB (ELECTRIC
BOARD) DEVICE**



**GFO AUTOMATIC
FLOWERPOT EXTINGUISHER**



GFO SMART FIREBALL

**INTRODUCING OUR
INNOVATIVE PRODUCT**

GFO AUTOMATIC FIREBALL

GFO AUTOMATIC FIREBALL

The GFO Fire Safety Fire Ball is a compact advanced fire-extinguishing device designed to quickly and effectively combat fire in various environment. It's an automatic fire extinguisher ball that get activate when it directly comes into contact with fire. This innovative fire safety method saves your life, time, and money and is portable, making it an ideal addition to any fire safety plan.

[Live Demo](#)



FEATURES



01 HDPE Plastic body

02 Shape - Ball

03 Weight - 0.88 lbs,
2.87 lbs & 3.75 lbs

04 Coverage area 3 - 5
Cubic meter

05 Diameter - 144 mm

06 Sound Noise - 120 decibels

07 Activation time 3 - 5 secs

08 Chemical Map - 90% mono
Ammonium phosphate

09 Sensor - 6 multiple
sensors

10 Eco Friendly

11 Accessories - Ball with
Stand, and screw

HOW DOES IT WORK?

When Flame Touches The Fireball. It Automatically Get Blast and within 3-5 Seconds Extinguish The Fire immediately

How to Install a GFO Fireball?

1. You can install this device near fire-prone areas or where there is a high risk of fire incidents.
2. fire ball should be placed or installed above 30 cm of the circuit box, MCB box, electric meter, etc.
3. Install The Fireball With Help Of Screw And Stand

HOW TO USE GFO AUTOMATIC FIREBALL?

Passive User

You can install GFO fireballs near fire-prone areas, or there will be a high risk of fire incidents. Like near switchboards, in server rooms, inverters, electricity rooms, etc. Once touched by the fire, the GFO firefighter ball will explode and extinguish the fire immediately within 3 to 5 seconds.



Step - 1
Short Circuit



Step - 2
Fire Initiated



Step - 3
The ball activates
within 3-5 seconds and explode.



Step - 4
Fire under control

HOW TO USE GFO AUTOMATIC FIREBALL?

Active User

Simply throw a GFO fire ball towards the fire, and it will work automatically.
No need to go near the fire.



Step - 1
Presence of fire



Step - 2
Throw fireball into the
fire



Step - 3
Fireball activates
within 3-5 seconds and explode



Step - 4
Fire under control

APPLICATION AREA





INTRODUCING OUR NEXT PRODUCT

GFO FLOWERPOT EXTINGUISHER

GFO FLOWERPOT EXTINGUISHER

GFO Automatic Flowerpot Extinguisher is an advanced and modern device that provides beauty as well as protection from fire. You can use it in your home, office or wherever you want to decorate and make the place beautiful while also ensuring safety. It is available in different size and color for customer convenience

[Live Demo](#)



FEATURES



01 HDPE Plastic body

02 Shape - Flower Pot

03 Weight - 2.20 lbs &
4.40 lbs

04 Coverage area 3 - 7
Cubic meter

05 Sensor - 4 multiple
sensors

06 Sound Noise - 120 decibels

07 Chemical Map - 90% mono
Ammonium phosphate

08 Activation time 3 - 5 secs

09 Eco Friendly

HOW DOES IT WORK?

When flame touches the flowerpot device, its automatically activate

The flowerpot blast and releases a fire-extinguishing dry chemical powder. That chemical powder extinguishes the fire immediately within 3 to 5 seconds.

How to Install a GFO Flowerpot?

Place the GFO flowerpot where you want to decorate



HOW TO USE GFO

AUTOMATIC FLOWERPOT EXTINGUISHER?

Simply throw a GFO fire flowerpot towards the fire, and it will work automatically. There is no need to go near the fire



Step - 1
Presence of fire



Step - 2
Throw GFO Automatic
Flowerpot into the
fire



Step - 3
GFO flowerpot activates
and explode



Step - 4
extinguishes the fire
within 3-5sec
and Fire under control

APPLICATION AREA



Reception Area

Offices

Restaurants

Cafe

Home



INTRODUCING OUR NEXT PRODUCT

GFO FIRE FIGHTER DRUM

GFO FIRE FIGHTER DRUM

GFO fire fighter drum is a fire extinguishing device. It is a compact cylindrical-shaped device filled with fire-extinguishing chemicals that is typically activated by contact with fire and extinguishes the fire immediately within 3–5 seconds. The GFO fire fighter is equipped with a fire sensor, which activates immediately during a fire call. It is made of totally harmless material and safe for the users the exploding power has been accurately calculated to be safe.

Live Demo



FEATURES



01 HDPE Plastic body

02 Shape - Cylindrical

03 Weight - 2.87 lbs &
3.75 lbs

04 Coverage area 3 - 5
Cubic meter

05 Diameter - 120 mm

06 Sound Noise - 120 decibels

07 Activation time 3 - 5 secs

08 Chemical Map - 90% mono
Ammonium phosphate

09 Sensor - 6 multiple
sensors

10 Eco Friendly

11 Accessories - Drum with
Stand, and screw

HOW DOES IT WORK?

When Flame Touches The fire fighter drum. It Automatically Get Blast and In 3-5 Seconds Extinguish The Fire immediately.



How to Install a GFO FIRE DRUM?

You can install this device near fire-prone areas or where there is a high risk of fire incidents. fire drum should be placed or installed above 30 cm of the circuit box, MCB box, electric meter, etc. Install The fire fighter drum With Help Of Screw And Stand.



HOW TO USE GFO FIRE FIGHTER DRUM?

Passive User

You can install GFO drum near fire-prone areas, or there will be a high risk of fire incidents. Like near switchboards, in server rooms, inverters, electricity rooms, etc. Once touched by the fire, the GFO drum will explode and extinguish the fire immediately within 3 to 5 seconds.



Step - 1
Short Circuit



Step - 2
Fire Initiated and the
firefighter drum
activates



Step - 3
The firefighter drum get blast and
extinguishes the fire within 3-5
sec



Step - 4
and Fire under control

HOW TO USE GFO FIRE FIGHTER DRUM?

Active User

Simply throw a GFO fire fighter drum towards the fire, and it will work automatically.

There is no need to go closer to the fire.



Step - 1
Presence of fire



Step - 2
Throw fire fighter drum
into the fire



Step - 3
fire fighter drum activates and
explode



Step - 4
extinguishes the fire within
3-5sec
and Fire under control

APPLICATION AREA



Residential Area

Industrial Area

Ware Houses

Commercial Area





INTRODUCING OUR NEXT PRODUCT

GFO EB FIRE SAFETY DEVICE

GFO EB(ELECTRIC BOARD) FIRE SAFETY DEVICE

The GFO EB device is the world's first innovative fire safety device. GFO EB device is a unique design specifically designed for electric boards and panels, providing targeted protection. It is designed to extinguish fires automatically without human intervention. Most of the fires start from the electric board. Our fire safety device is an innovative device which extinguishes the fire in its initial stages and prevents the fire from spreading and causing a major accident.

Live Demo



FEATURES



01 HDPE Plastic body

02 Shape - Rectangular

03 Weight - 0.55lbs

04 Size: Height - 25mm,
Width: 30mm,
Length: 50mm

05 Sensor Based

06 Sound Noise - 70 decibels

07 Chemical Map - 90% mono
Ammonium phosphate

08 Activation time 3 - 5 secs

09 Eco Friendly

HOW DOES IT WORK?



When flame touches the EB device, It automatically gets blast and, in 3-5 seconds extinguish the fire immediately.

How to Install a GFO EB(Electric Board) Device?

1. You can install this device on your electric board with the help of sticky tape.
2. Simply remove the sticky tape cover and stick this device on the electric board's upper side.

FOLLOW THESE STEPS

To peel off the protective backing and properly attach the device, follow these steps:

Step 1: Clean the Surface: Before peeling off the tape, ensure that the surface of the electric box or meter is clean and free from dust or debris. Cleaning the area with a cloth or wipe can help create a better bond.

Step 2: Identify the protective layer. On the back of the device, you'll find a protective layer covering the adhesive tape. This layer is usually made of paper or plastic.

Step 3: Involves gently lifting the protective layer from the adhesive tape, peeling it away slowly and evenly to prevent wrinkles or air bubbles.

Step 4: Securely attach the device to the electric board, gently press it onto the surface, apply even pressure, and straighten the sensor's length to prevent fire contact.

Step 5: Locate the Tear Point: On the front of the device, you'll notice a designated "tear point." This tear point is designed for easy access to the elongated sensor within

Step 1



Step 2



Step 3



Step 4



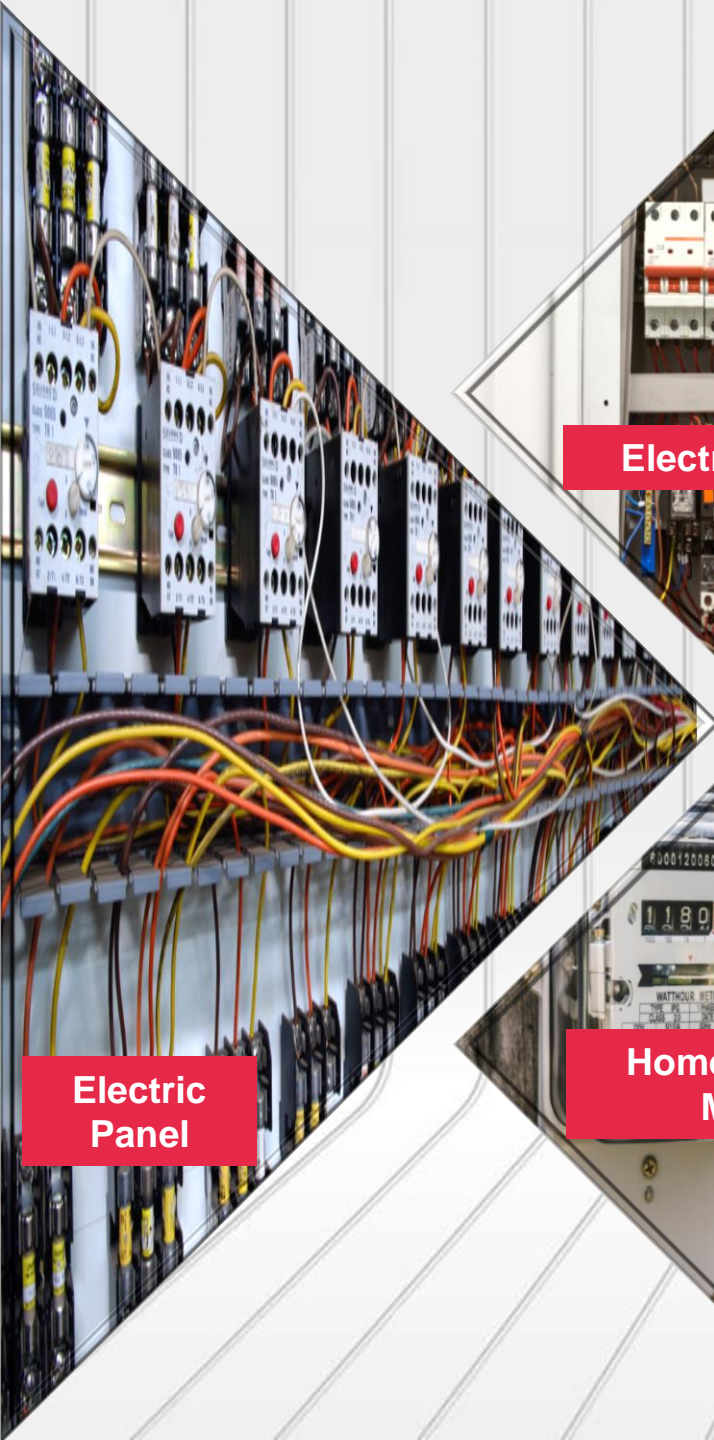
Step 4



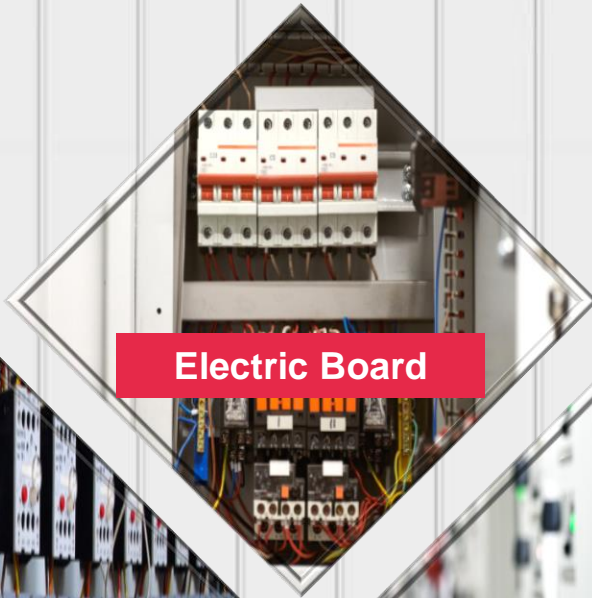
Done



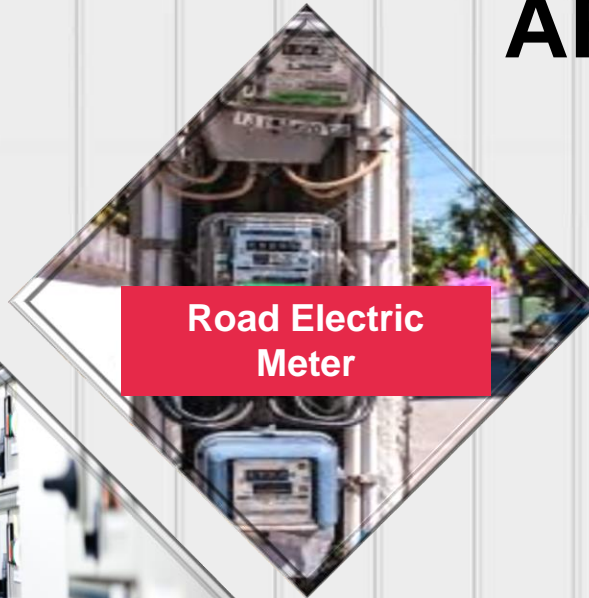
APPLICATION AREA



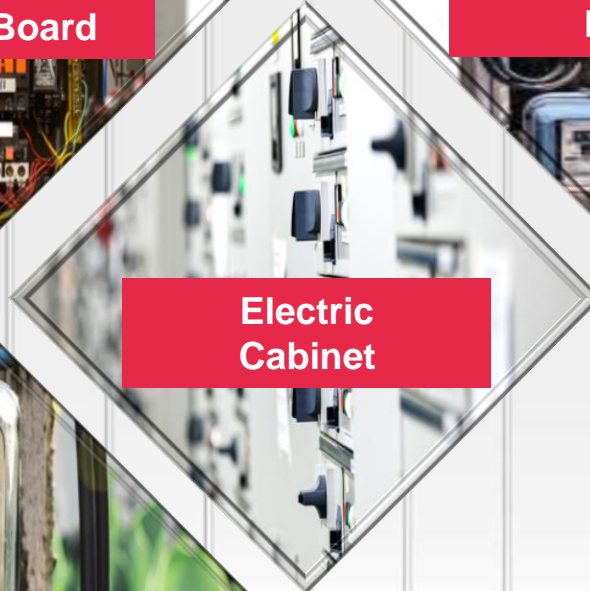
**Electric
Panel**



Electric Board



**Road Electric
Meter**



**Electric
Cabinet**



**Home Electric
Meter**





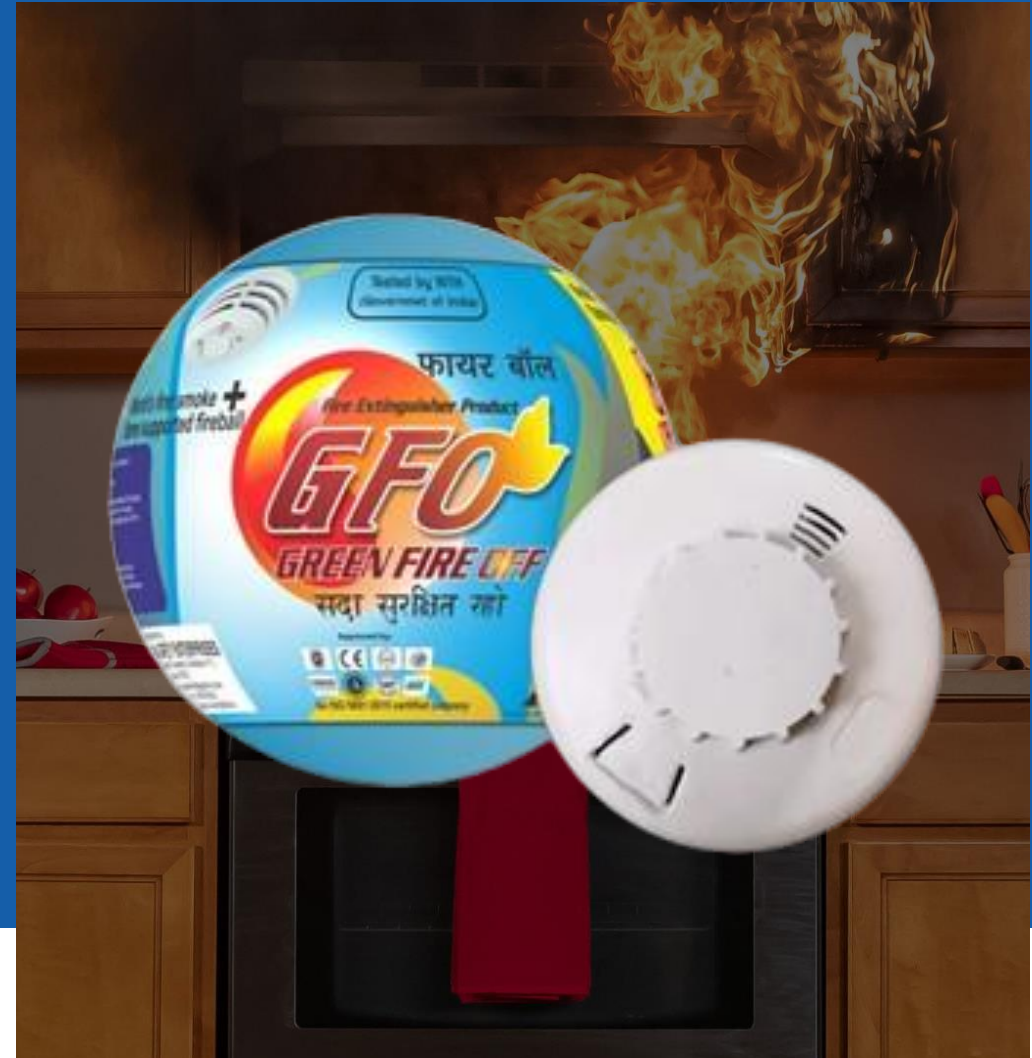
INTRODUCING OUR NEXT PRODUCT

GFO SMART FIREBALL

GFO SMART FIREBALL

The GFO smart Fireball is a technologically advanced device that detect, prevent, or mitigate fires in various environment. it designed to extinguish fires automatically without human intervention. It use sensors connectivity features, and intelligent algorithms to enhance fire safety measures. These self-activating fire suppression balls deploy automatically upon smoke or flame detection, extinguishing fires quickly and efficiently, offering a portable and user-friendly solution.

[Live Demo](#)



FEATURES



01 HDPE Plastic body

02 Shape - Ball

03 Weight - 3.30 lbs

04 Coverage area 3 - 5
Cubic meter

05 Diameter - 148 mm

06 Sound Noise - 120 decibels

07 Activation time 3 - 5 secs

08 Chemical Map - 90% mono
Ammonium phosphate

09 Sensor - 6 multiple
sensors

10 Battery Life - 1 Year

11 Ball with detector, stand
and screw

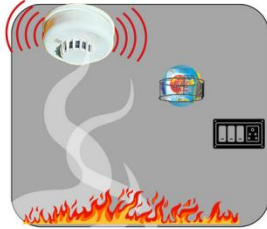
HOW DOES IT WORK?

Fireballs are strategically placed, such as near switchboards, to cover various areas of a room.

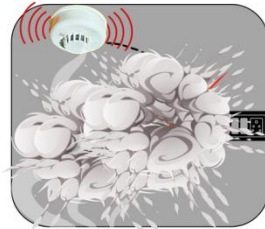
- The smoke detector detects fire at its earliest stage by sensing smoke.
- Upon detection, it activates the fireball.
- The fireballs blast and release a fire-extinguishing dry chemical powder and extinguishes fires within 3 to 5 seconds.



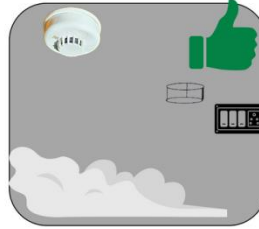
Step - 1
Presence of fire
immediately detector
detect the smoke



Step - 2
Detector start blowing
and give command to
GFO fireball for
Activation



Step - 3
Fireball activates
and explode



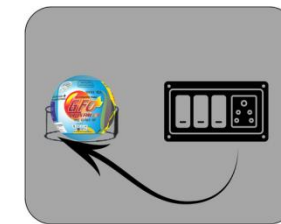
Step - 4
extinguishes the fire
within 3-5sec
and Fire under control

How to Install a GFO Smart Fireball?

- You can install the smoke detector under the roof.
- With the help of a screw.
- Set the fireball near switch board or Where there is high risk of fire.



Step - 1
Set the detector under
the roof



Step - 2
Set the GFO fireball
near switchboard with
help of screw



Step - 2
Final Look

APPLICATION AREA





INTRODUCING OUR LATEST PRODUCTS

OUR LATEST PRODUCTS



**GFO Location Sharing + Water
Sprinkler operating Detector**



GFO Location Sharing Smart Smoke Detector

**GFO LOCATION
SHARING + WATER
SPRINKLER OPERATING
DETECTOR**

GFO LOCATION SHARING + WATER SPRINKLER OPERATING DETECTOR

GFO smart detector detects the smoke at initial stage and immediately activates the water sprinkler system, as well as shares the exact location of fire accident on the LED screen. Even after spending cores of dollars, if the sprinkler system is not able to protect people, then what's its benefit? That's why we encourage you to immediately install our GFO smart Detector to avoid your sprinkler system from being damage. The GFO Location Sharing + Water Sprinkler operating Detector is smart and safe.

[Live Demo](#)



HOW TO USE GFO LOCATION SHARING + WATER SPRINKLER OPERATING DETECTOR?

Fireballs are strategically placed, such as near switchboards, to cover various areas of a room.

- Firstly, we check your sprinkler condition.
- When everything is fine, the GFO smoke detector is connected to the sprinkler tube with the help of a wire.
- LED panels are set in the reception area or can be installed wherever the owner wants to.

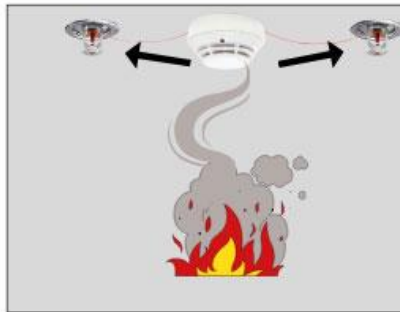


HOW DOES IT WORK?

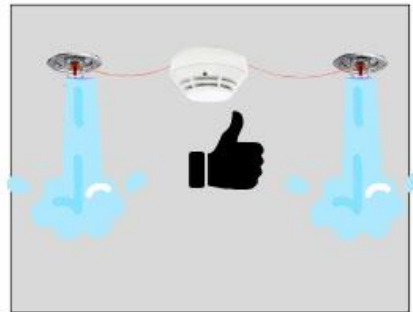
1. Presence of Fire
2. Detector detect the smoke
3. The GFO smoke detector activates.
4. Then it activates the sprinkler tube by giving it 80 degrees of heat.
5. Immediately tube activates it blast and extinguish the fire with the help of water.
6. And shares the exact location on the LED screen. also shows an alert message on owner smartphone.



Step -1



Step -2



Step -3



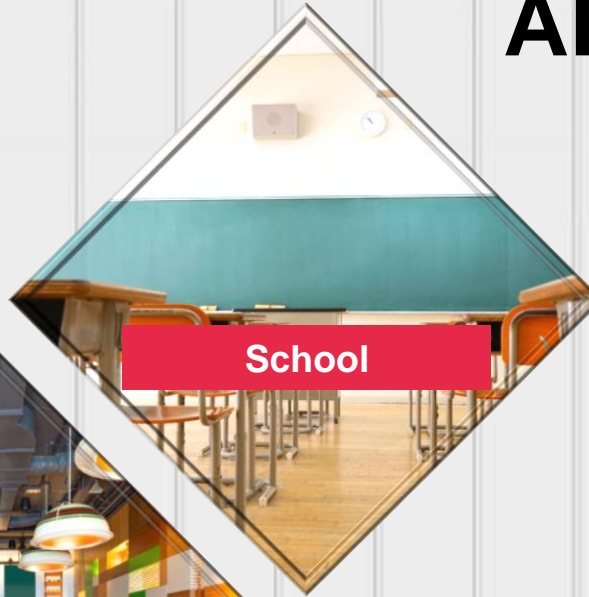
APPLICATION AREA



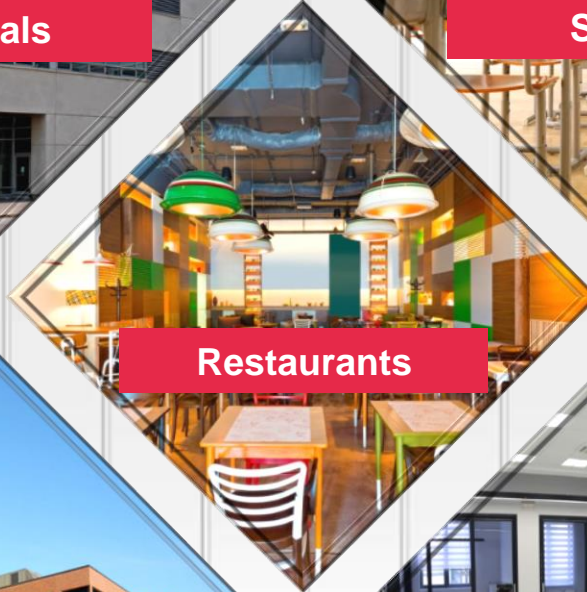
Malls



Hospitals



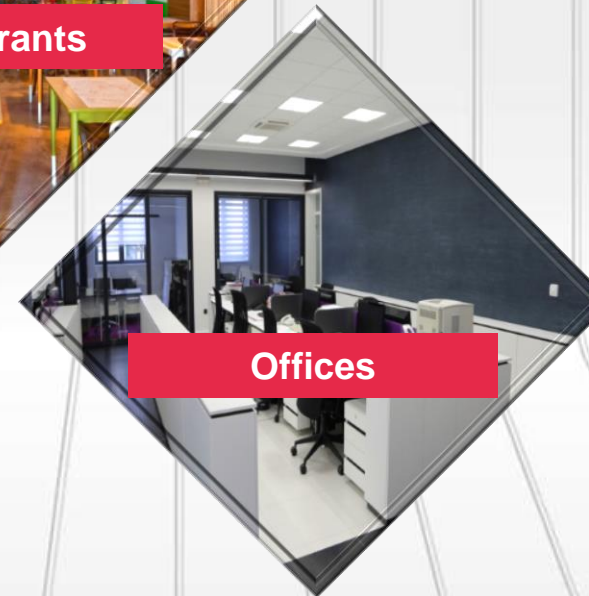
School



Restaurants



Colleges



Offices





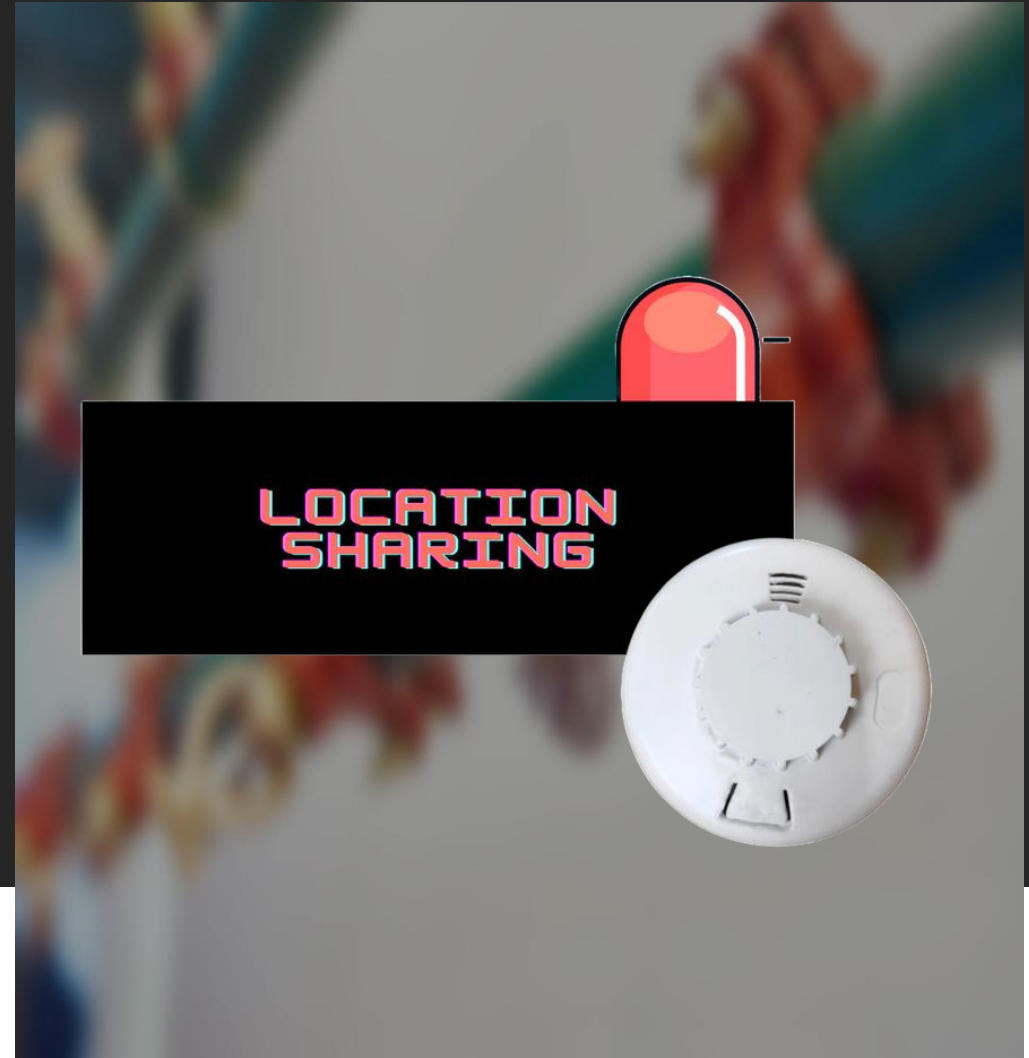
INTRODUCING OUR NEXT PRODUCT

**OUR INNOVATIVE
PRODUCT**

**GFO LOCATION
SHARING SMART
SMOKE DETECTOR**

GFO LOCATION SHARING SMOKE DETECTOR

The GFO Location Sharing Smoke Detector is a groundbreaking innovation that uses advanced technology to detect smoke from fires with unmatched precision. It sends an alert to a designated LED panel, sharing the exact location of the fire in real-time and ensuring safety during emergencies



MORE INFO

1. Our smoke detector use advanced sensors to detect even the faintest smoke traces, ensuring early detection of potential fire hazards.
2. The device send instant alerts to your smartphone in case of smoke detection, providing you with immediate information about the situation.
3. Our smoke detectors provide real-time location sharing, allowing emergency responder to accurately locate the fire within your building.
4. Our device seamlessly integrates with your existing smart ecosystem, enabling remote monitoring and control user-friendly mobile app.
5. It Customizable alerts allow users to notify designated emergency contacts or local authorities, ensuring prompt assistance



HOW DOES IT WORK?

When detector detect the smoke, it gives a command to the LED panel and hotter.
The panel displays the exact location of the fire on the screen and the hotter starts blowing.



Step - 1
Presence of fire



Step - 2
Smoke detector
detect fire and smoke



Step - 3
The LED panel displays the exact
location of the fire on the screen.
and the hooter starts blowing.

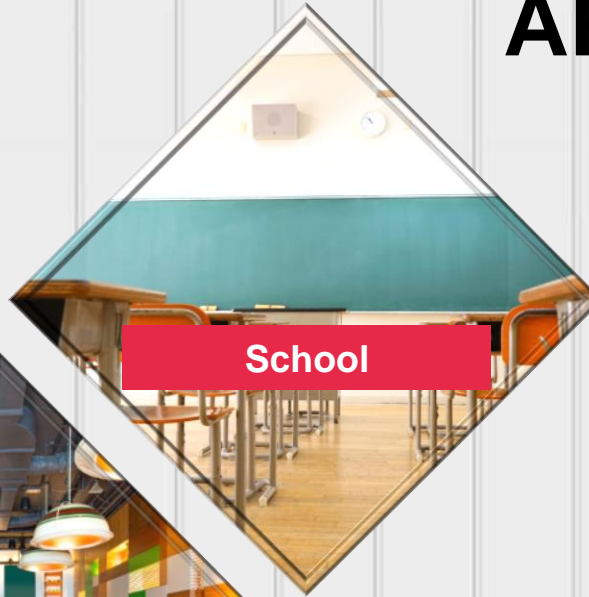
APPLICATION AREA



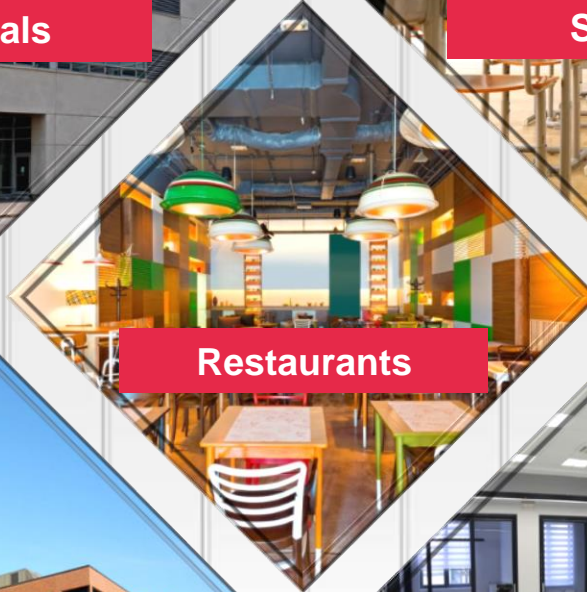
Malls



Hospitals



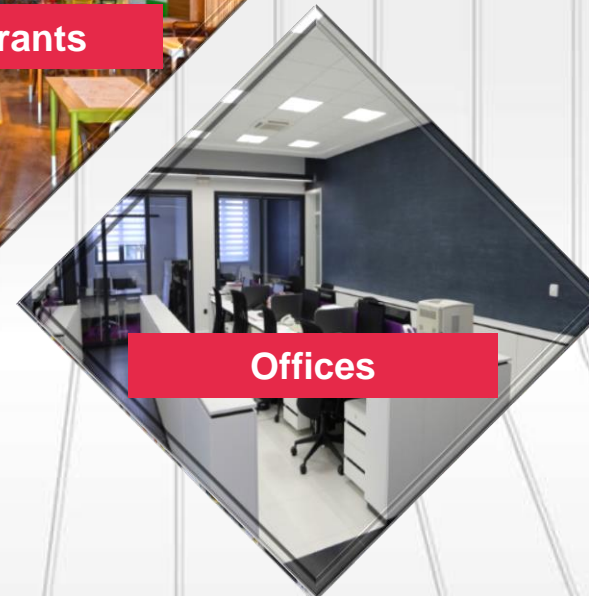
School



Restaurants



Colleges



Offices



WHY WE ARE THE BEST?

COMPARISON BETWEEN GFO & IMPORTED PRODUCT

| Features | GFO (GREEN FIRE OFF) | IMPORTED FIRE PRODUCT |
|----------------------------------|---|--|
| Extinguishing agent quality | Mono Ammonium Phosphate- MAP | Low class powder which does not has certificate details. |
| Certification | Tested by NTH, OHSAS, ISO, CE, UDYAM, GMP, NSIC, NABL, LERC | No certification from authorized lab |
| Manufacturing location | Made in India | Mostly imported from China |
| Product Body | HDPE Plastic Body | Thermocol Body |
| Sensor | Multiple Sensor | Single Sensor |
| Backup team for customer support | Qualified team with sales And support over pan India Level with corporate office. | No Teamwork No Ethics |
| Distribution Network | Strong Distributor's and Dealer's network on pan India Level. | No trust |
| Environment support | Eco-Friendly powder, non-toxic, Harmless, Bio- Degradable | No environment support with Power properties |
| Shelf life or Warranty | 5 Years | No warranty |

INDIAN CLIENT



S.R.M MEDICAL COLLEGE



INDIAN RAILWAYS



**स्कूल शिक्षा विभाग
मध्य प्रदेश शासन
M.P GOVT**



BSF



**ANDAMAN AND NICOBAR
POLICE**



Municipal Chandigarh



ASSAM RIFLES



PM INDIA

PM INDIA



**Mediterranean Shipping
Company**



NTPC



INDIAN OIL



BPCL



SUZLON



ICICI LOMBARD



V-TRANS



ADANI



DOMINOS



INDIAN NAVY

OUR CERTIFICATION



IMPORT EXPORT CODE



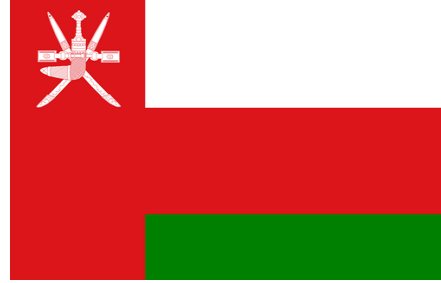
EXPORTING COUNTRIES



USA



Turkey



Oman



Singapore



Australia



Cyprus



UAE



Nepal



Canada



Mexico

OUR APPRECIATIONS



Mr. Vivek Bindra
MOTIVATIONAL SPEAKER



Mr. Ajay Jha
MEDIA PERSONALITY, ANCHOR



Mr. Jeetu Verma
BOLLYWOOD ACTOR

OUR APPRECIATIONS



Mr. Suman Talwar
TOLLYWOOD ACTOR



Miss. Sanjana Vij
MISS TELANGANA 2019

OUR PRESENCE



OUR PRESENCE



CONTACT US



FIRE AND PERSONAL SAFETY ENTERPRISES

Address - office no - 221, Second Floor,
Pocket - 6, Dwarka Sector - 12,
New Delhi - 110078 INDIA

☎ +91 8826132172 , 9319312172, ✉ Email id- info@gfofireequipments.com

🌐 www.gfofireequipments.com