

Something about JUNYANG

*To revolutionize the container
purchasing and logistics
experience*



To Know Us by 7 Q&A

Q1: What do you offer?

A: Our company-- JUNYANG Supply Chain Management Co., Ltd. is specialized in providing comprehensive solutions for both standard shipping containers and specialized containers, as well as a wide range of logistics services to facilitate the storage and shipping of merchandise worldwide.

Q2: What types of containers do you offer?

A: We offer a wide range of containers including standard dry containers, refrigerated containers (reefers), open-top containers, flat rack containers, and other customized containers as well. Each type is available in various sizes to suit different needs. Please refer to this brochure to know more of our products.

Q3: Do you offer new and used containers?

A: Yes, we offer both new and used containers. New containers are typically manufactured within the last year or to be built as per the customized spec and are in pristine condition, while used containers have been previously utilized but are thoroughly inspected and refurbished to ensure they meet cargo worthy (CW) or IIICL standards.

Q4: What are your delivery options?

A: We provide several delivery options depending on your location and preference. Containers can be delivered by ONE WAY or empty delivery, such as the main ports and IPI (Interior Point Intermodal) of Asia, Europe, America, Australia etc.

Q5: Can I customize my container?

A: Yes, we offer customization service for containers. Whether you have special needs for storage, office space, or specialized transportation, we can design the container to meet your specific requirements.

Q6: How do you ensure the quality of your containers?

A: All our containers undergo a rigorous inspection process to ensure they meet the agreed quality standards. For used containers, we can refurbish and repair to ensure they are structurally sound and weatherproof.

Q7: What industries do you serve?

A: We serve a wide range of industries including shipping and logistics, construction, retail, agriculture, and more. Our containers are versatile and can be used for storage, transportation, or even as portable buildings for various applications.

Contents

I. About Us	1
II. Service	3
2.1 Container Customization Service	3
2.2 Comprehensive Logistics Solutions	4
2.3 Global Network Service	5
III. Products	6
3.1 Standard Container	6
3.1.1 Refrigerated Container	6
3.1.2 Standard Dry Container	7
3.2 Customized Solutions	8
3.2.1 4x10'HC Container Welded & Nested	8
3.2.2 9'HC Container with Man Door & Window	9
3.2.3 20'HC Container Nested & Welded	10
3.2.4 20'HC with Two Side Doors Nested & Welded	11
3.2.5 40'HC Double Door Container	12
3.2.6 40'HC OS	13
3.2.7 40'HC Duocon	14
3.2.8 40'HC OS Container with Four Side Doors with 9'HC Container Nested	15
3.2.9 40'HC with Two Side Doors	16
3.2.10 45'HC Dry Container	17
3.2.11 Office Container	18
3.2.12 Camouflage Container	19
3.2.13 Platform	20
3.2.14 Swimming Pool Container	21
3.2.15 20'HC Container for Hazardous Cargo	22
3.2.16 Expandable House	23
3.3 Container Parts	24
3.3.1 Regular Container Parts	24
3.3.2 Insulated Panel	27
3.3.3 Partition Wall	28
3.3.4 Roll-up Door	29
3.3.5 Wireless Motion Sensor LED Lights with Magnetic	30

I. About Us

Our mission: to revolutionize the container purchasing and logistics experience!

At JUNYANG, we specialize in providing comprehensive solutions for both standard shipping containers and specialized containers, as well as a wide range of logistics services to facilitate the storage and shipping of merchandise worldwide.

Our Values



High-Efficiency



Win-Win



Human-Centered



Goal-Oriented

Client Distribution



BIC Member



[Home](#) | [Bic Codes](#) | [JYSU](#)

Registered BIC Code: JYSU

Company
JUNYANG SUPPLY CHAIN MANAGEMENT CO.,LTD.

Address
RM 13.27/F HO KING COMM CTR,2-16 FA YUEN ST MONGKOK KLN

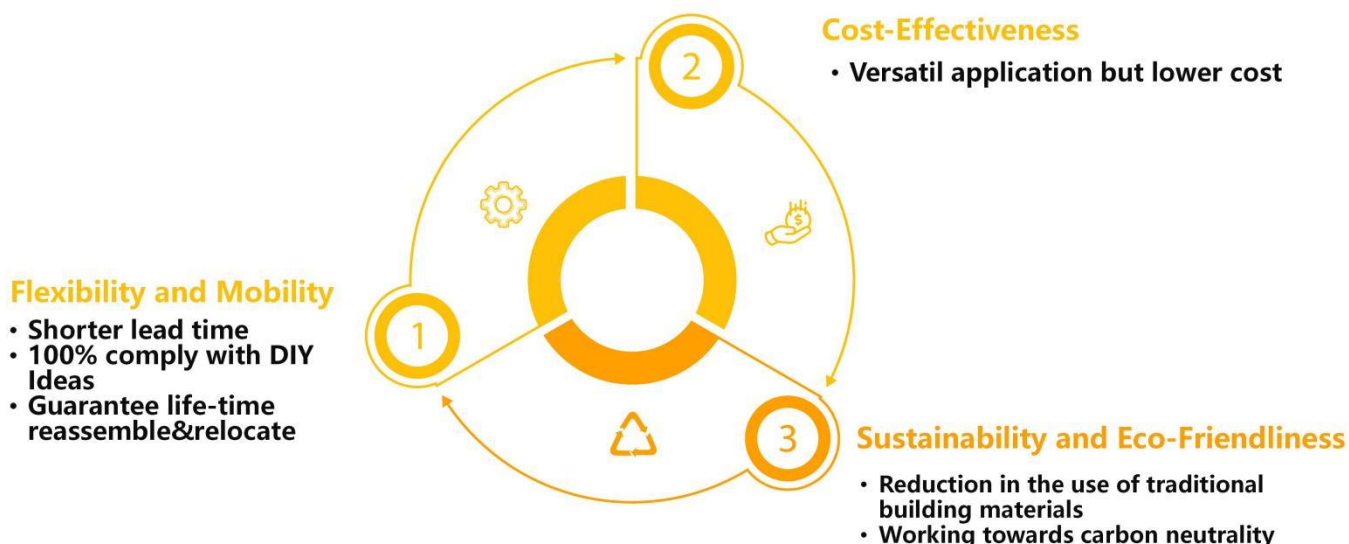
Website
www.junyangsupply.com

Country
Hong Kong, China

Cooperative Logistic Partner



II. Service



2.1 Container Customization Service

With our container customization solutions, you can turn your container into a tailor-made, functional space that meets your needs.

Advantages of Customization Service:

Flexibility and Mobility: Customized containers can be quickly produced and assembled as needed. They are mobile and can be relocated or reorganized as required.

Cost-Effectiveness: The cost of customizing a container is relatively low, and the construction time is short.

Sustainability and Eco-Friendliness: Customized container services help to reduce the use of traditional building materials, supporting environmentally friendly development.



2.2 Comprehensive Logistics Solutions

By integrating a comprehensive, multi-dimensional logistics system, we meet customer needs in all aspects of supply chain management, cargo transportation, and warehousing management.

Advantages of Comprehensive Logistics Solutions

Improved Operational Efficiency: By integrating resources across all stages of the supply chain and optimizing transportation and warehousing processes, comprehensive logistics solutions can significantly enhance a company's overall operational efficiency. This reduces delays in production and delivery, while increasing the flexibility and adaptability of the supply chain.

Cost Reduction: Through optimizing transportation routes and load capacity, companies can reduce fuel and energy consumption, further lowering operational costs.

Flexibility in Responding to Market Changes: With high flexibility, comprehensive logistics solutions can quickly respond to changes in market demand and uncertainties, ensuring the stability of logistics services.



2.3 Global Network Service

We are able to provide you with global cargo transportation, warehousing, distribution and supply chain management services through our worldwide logistics resources and infrastructure.

Benefits of Global Network Services

Reliable Global Depot Storage: We are committed to providing comprehensive and efficient warehouse storage services to our customers around the world. Through our worldwide warehousing network, we ensure that goods are delivered to their destinations in a safe and timely manner.

Maintenance: We ensure that containers and all related equipment are maintained in a timely and efficient manner in order to maintain their normal operation and extend their service life. In this way, the efficiency of cargo flow is enhanced and the smoothness of the logistics chain is guaranteed.

Spare parts available: Wherever you are in the world, we can respond quickly to ensure that your operations are not jeopardized by a lack of critical components. Timely and reliable supply is guaranteed, so you can focus on your core business without worrying about parts shortages or repair delays.

III. Products

3.1 Standard Container

3.1.1 Refrigerated Container



3.1.2 Standard Dry Container



3.2 Customized Solutions

3.2.1 4x10'HC Container Welded & Nested



3.2.2 9'HC Container with Man Door & Window



3.2.3 20'HC Container Nested & Welded



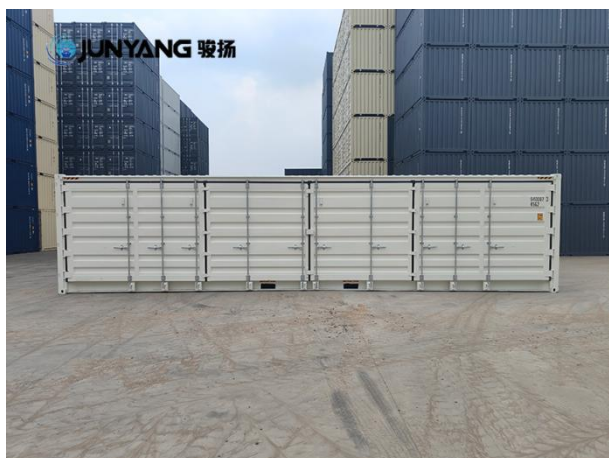
3.2.4 20'HC with Two Side Doors Nested & Welded



3.2.5 40'HC Double Door Container



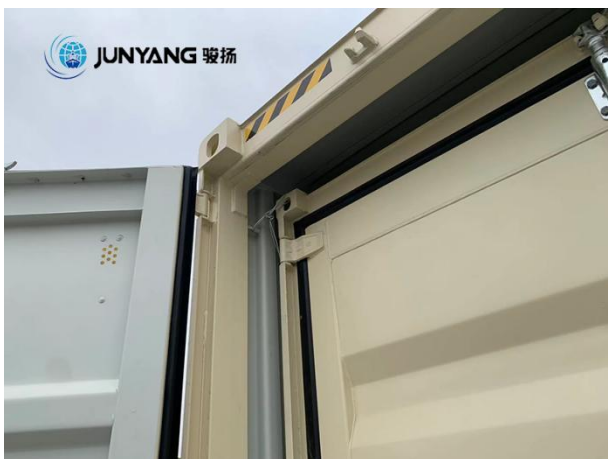
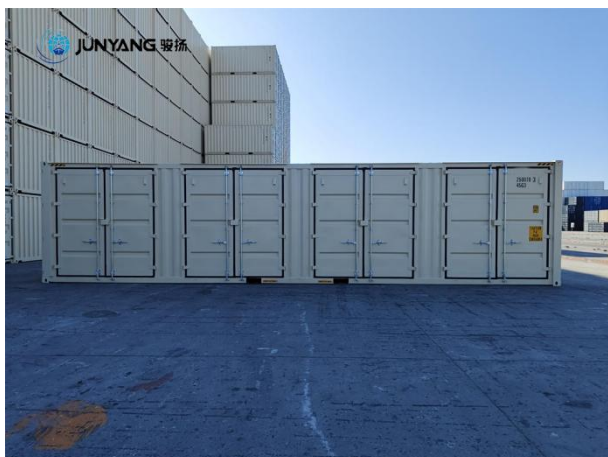
3.2.6 40'HC OS



3.2.7 40'HC Duocon



3.2.8 40'HC OS Container with Four Side Doors with 9'HC Container Nested



3.2.9 40'HC with Two Side Doors



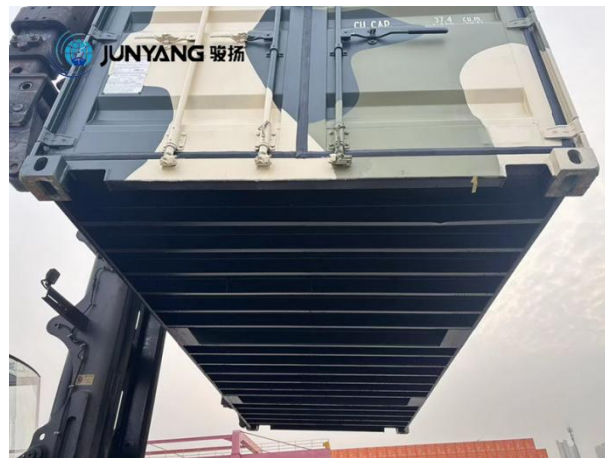
3.2.10 45'HC Dry Container



3.2.11 Office Container



3.2.12 Camouflage Container



3.2.13 Platform



3.2.14 Swimming Pool Container



3.2.15 20'HC Container for Hazardous Cargo



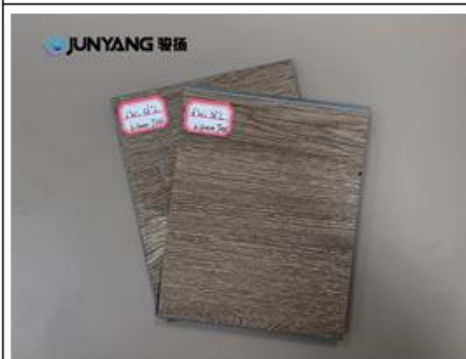
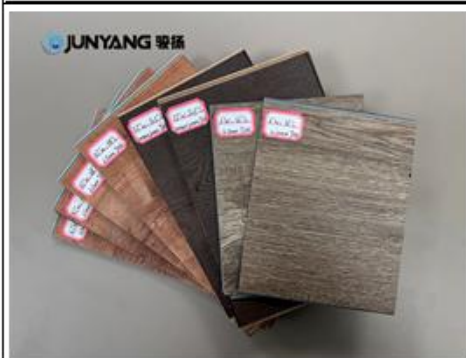
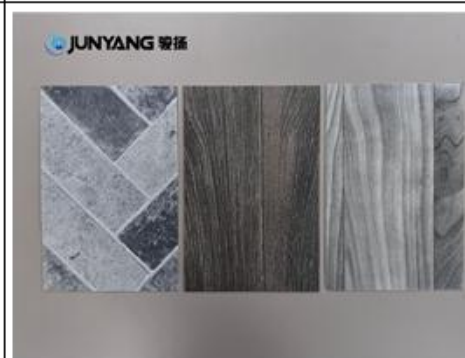
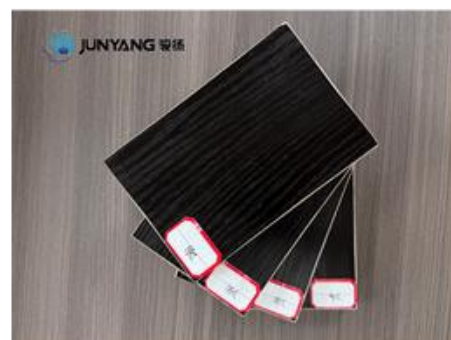
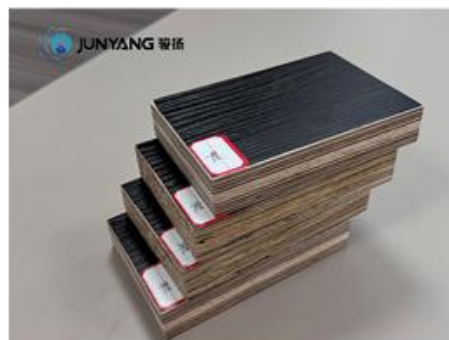
3.2.16 Expandable House



3.3 Container Parts

3.3.1 Regular Container Parts

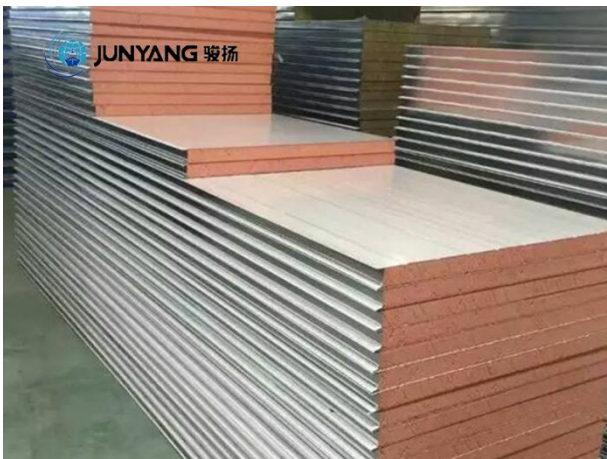
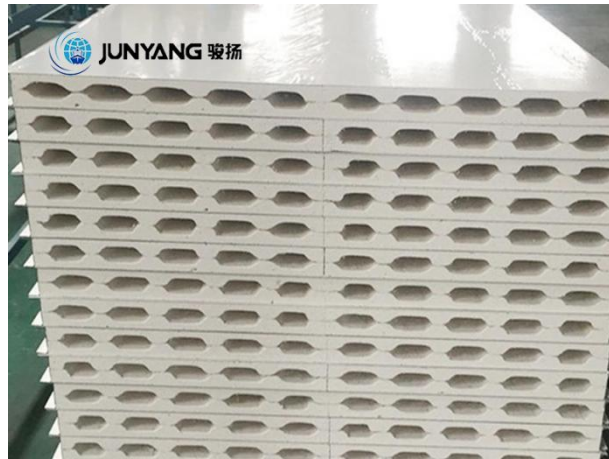
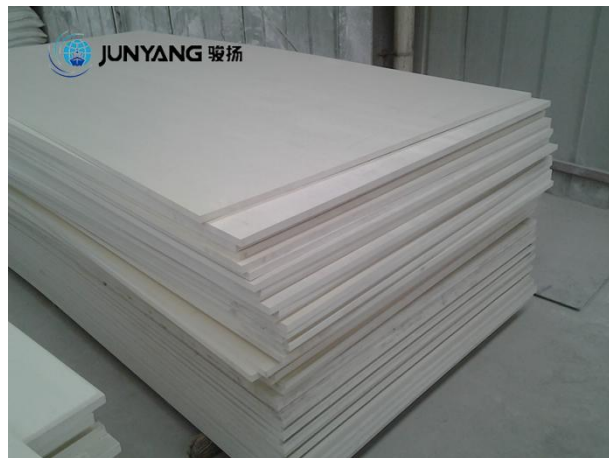
Container Floor
(Multiple Flooring Solutions
for ISO+Special Containers)



<p>Locking Device</p>		
<p>Hinge</p>		
<p>Container Panel</p>		
<p>Front& Rear Assembly</p>		
<p>Corner Casting</p>		

Door Gasket		
Twist Lock		
Ventilator		
Decals		

3.3.2 Insulated Panel



3.3.3 Partition Wall



3.3.4 Roll-up Door



3.3.5 Wireless Motion Sensor LED Lights with Magnetic



JUNYANG 骏扬

Junyang Supply Chain Management Co.,Ltd.

Address: Room 902 Jianguo Tower, No.519 Changjiang Middle Road, Huangdao District,
Qingdao, P.R China P.O 266000

Website: www.junyangsupply.com

E-mail: paul.petram@junyangsupply.com

Tel: +86 182 6663 6558/ +86 151 5324 9319

To know more about us by scanning QR code on the right!

