

Champions of supply chain sustainability

**Corporate
Profile
2024**





purpose powers progress

Handle's purpose - providing cost effective, reliable and sustainable alternatives to shipping consumables that enable customers to contribute to their sustainability goals without impacting existing infrastructure - is at the heart of everything we do. The importance of this purpose has been at the forefront as we build out our new, state-of-the-art manufacturing facility in Dubai, U.A.E. Increasing our supply capabilities whilst lowering the carbon intensity of our own operations.



Cost-effective transport pallets made from 95% recycled materials

صنع منصات نقل فعالة من حيث التكلفة
من 95% من المواد المعاد تدويرها

At handled our goal isn't just to help you get your assets from A to B. We want to change the global blueprint on how shipping & packing products are manufactured for a better world today, and we take that ambition seriously. Through our innovative designs and sustainable manufacturing processes we deliver best in class products allowing your supply chain to operate smoothly and efficiently.

We specialize in the design and manufacturing of engineered molded wood packing products, otherwise referred to as compressed wood pallets (CWP's). Our products are proven to outperform other options for one-way and export shipping by reducing costs and the environmental impact of supply chains.

Our leadership have decades of experience in the energy, manufacturing and logistics sector and leverage this diversity to deliver excellence in both product quality and client service. Working directly with our equipment manufacturer to have a closed loop supply with 100% back up to guarantee our own supply chain.

Quality, Safety and Sustainability are core to our business philosophy and through constant monitoring, evaluation and action we streamline our plants to meet our demanding expectations. Our automation systems ensure the quality process, and throughout our company we have a Target Zero safety policy. For example: no human interaction is required from the time the raw product is deposited into our plant until the end product is accumulated and stored.

Our QC SOP's are extensive and far beyond industry standards. With batch testing and QC checks (both automated and human) being done on a rigorous basis and planned maintenance scheduled daily, weekly and monthly to ensure manufacturing continuity.

Together with our international partners, we have supplied pallets and logistics support throughout the Far East and are now delighted to be focussed on expanding our solutions to the Middle East by way of the United Arab Emirates.

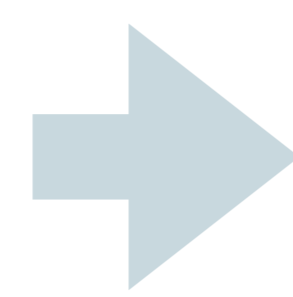


A PRINCIPLED APPROACH

Our Value Chain

Feedstock

The bulk of our current raw material is landfill sourced waste wood, however we are constantly trialing new sources of sustainable materials including all forms of bio-waste, from leaves, fronds and husks to grasses and bio byproducts.



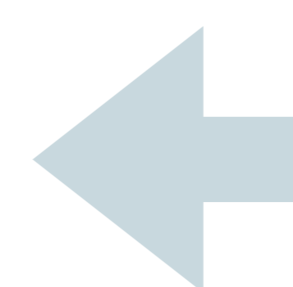
Recycling

After sourcing our raw materials are sent to processing facility to be sorted, cleaned and chipped to size, with anything unsuitable sent for appropriate recycling. We operate a goal of zero waste.



Production

Our proprietary technologies allow us to forge shapes not possible before, combined with our investment in automation our production capacity is ever growing to meet the needs of the region.



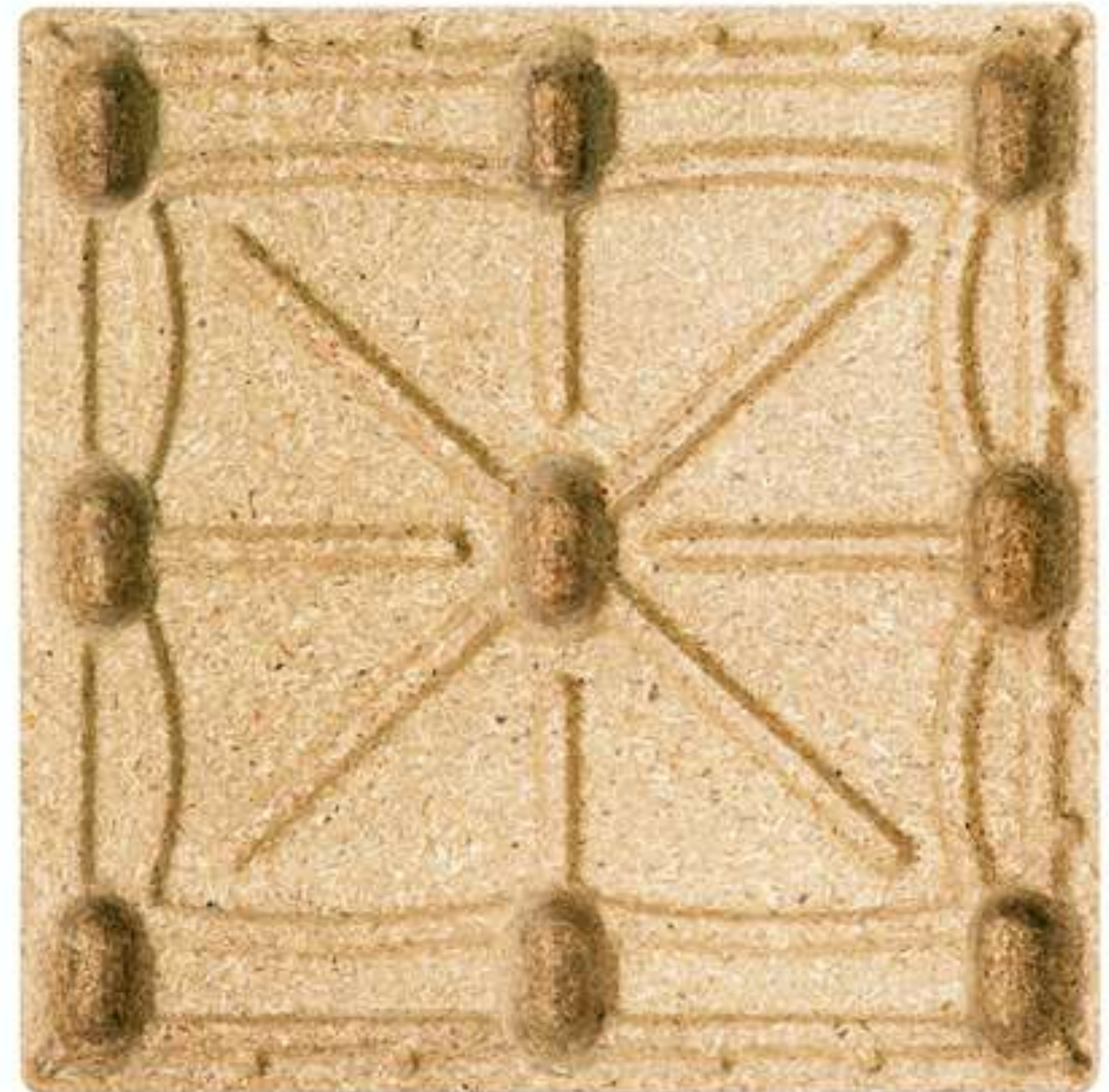
Innovation

Beyond our constant material trials our engineers are constantly evolving our products designs to enhance them were possible including strength and weight and client integrations.

Our Products

Compressed Wood

Our industry leading compressed wood shipping pallets are designed to offer improvements to alternatives in every aspect without disrupting the workflows currently in place.



Sustainable

- ▶ 95% of raw materials sourced from landfill
- ▶ End product 100% recyclable

Locally Manufactured

- ▶ UAE based manufacturing facility
- ▶ Employ majority local workforce

Innovative Designs

- ▶ Round Edged, sharp free construction
- ▶ Roller Conveyor compatible

Cost Effective

- ▶ Lower price than alternative products
- ▶ Stable pricing on raw materials

Space Efficient

- ▶ Nestable offering compact stacking
- ▶ Lightweight

Customizable

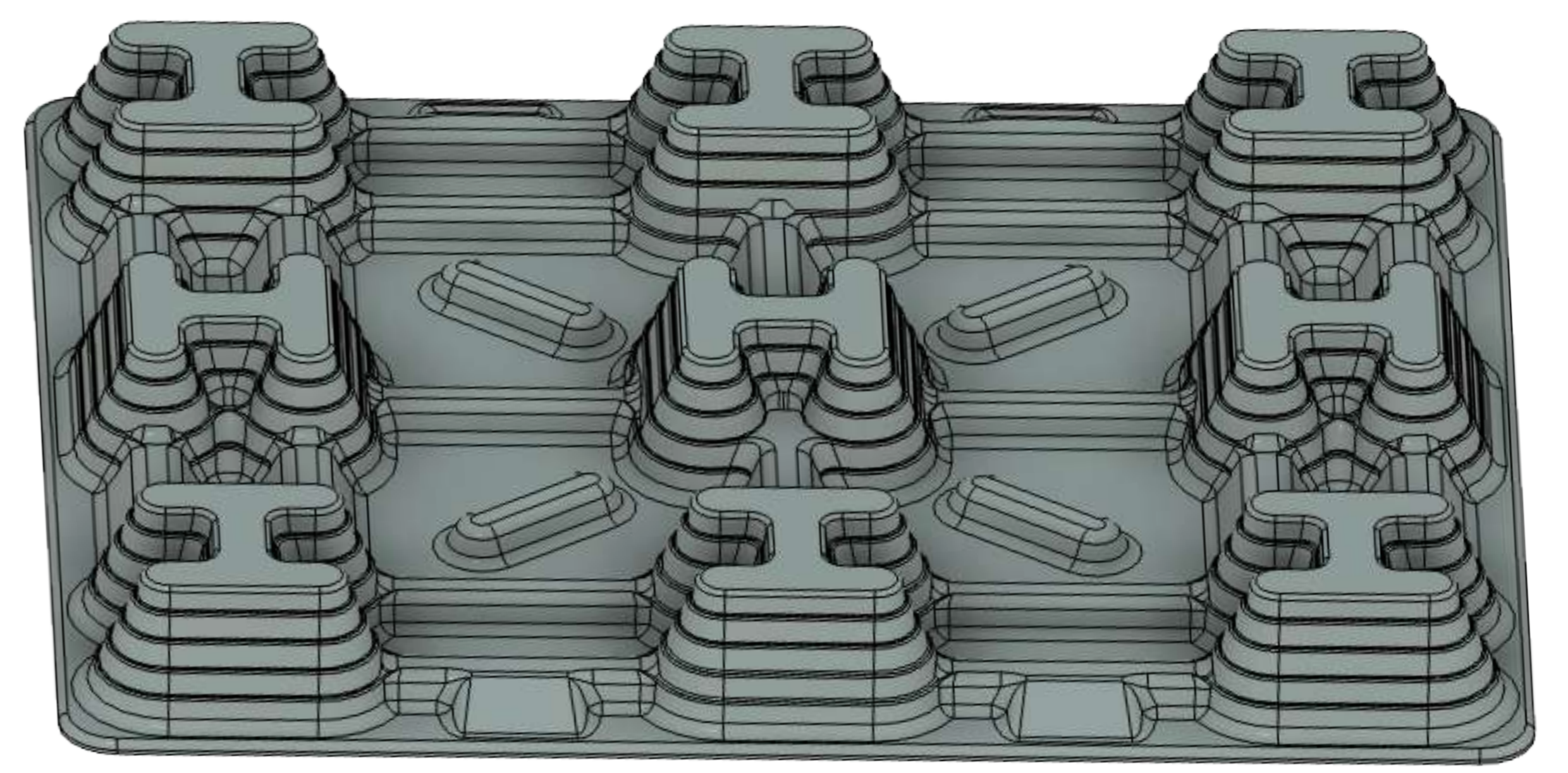
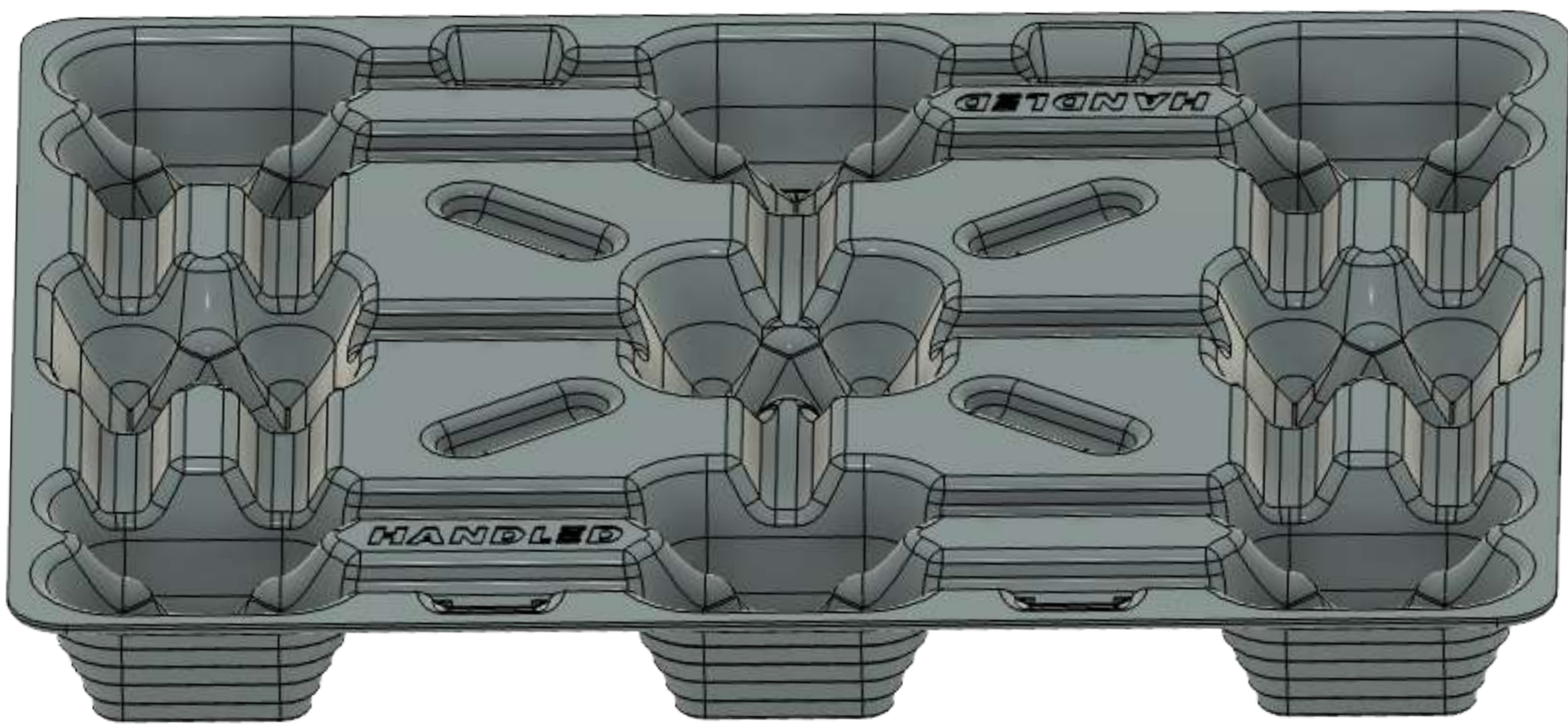
- ▶ Dimensions to fit around your work flow
- ▶ Client branding and color coding

A CLOSER LOOK

Handled hPal

Engineered to make your life
easier

ISPM-15 compliant
4-way access
Nestable
Compatible with roller conveyors
95% recycled materials



Large surface area

Our feet have 2.5x the contact area over similar compressed wood pallets allowing for stacking under load

Branded

Alongside our own branding, our pallets can be custom branded to client spec

Concave feet

Allows nesting to maximize space utilization

Unique feet

Increases stability and compatibility with roller conveyors

Stiffeners

Increase rigidity under load

Fork access

Tapered cutouts provide access to industry standard lifting equipment without compromising strength or rigidity

Technology

Partnering with a leading IoT logistics specialist has allowed us to offer a range of pallets with integrated technology that provides our clients unparalleled insight into their shipments.

By merging multiple technologies in RFID, GPS, Cellular, Bluetooth and BLE and wrapping them in a modern easy to use, always online user interface, RAPID makes asset tracking a breeze.



API Integration

Through an open API, users can integrate the AirFinder UI into any existing platform. The API connects two systems together to transfer information between them with ease. Easily store data in the AirFinder tags and report information through patented software to provide an API call.

Location Mapping

Location mapping is used to show where on a map each tag is located. Each company uploads a map of their facility or chooses an area of an outdoor map. The tag locations will show up on each map based on xyz coordinates.

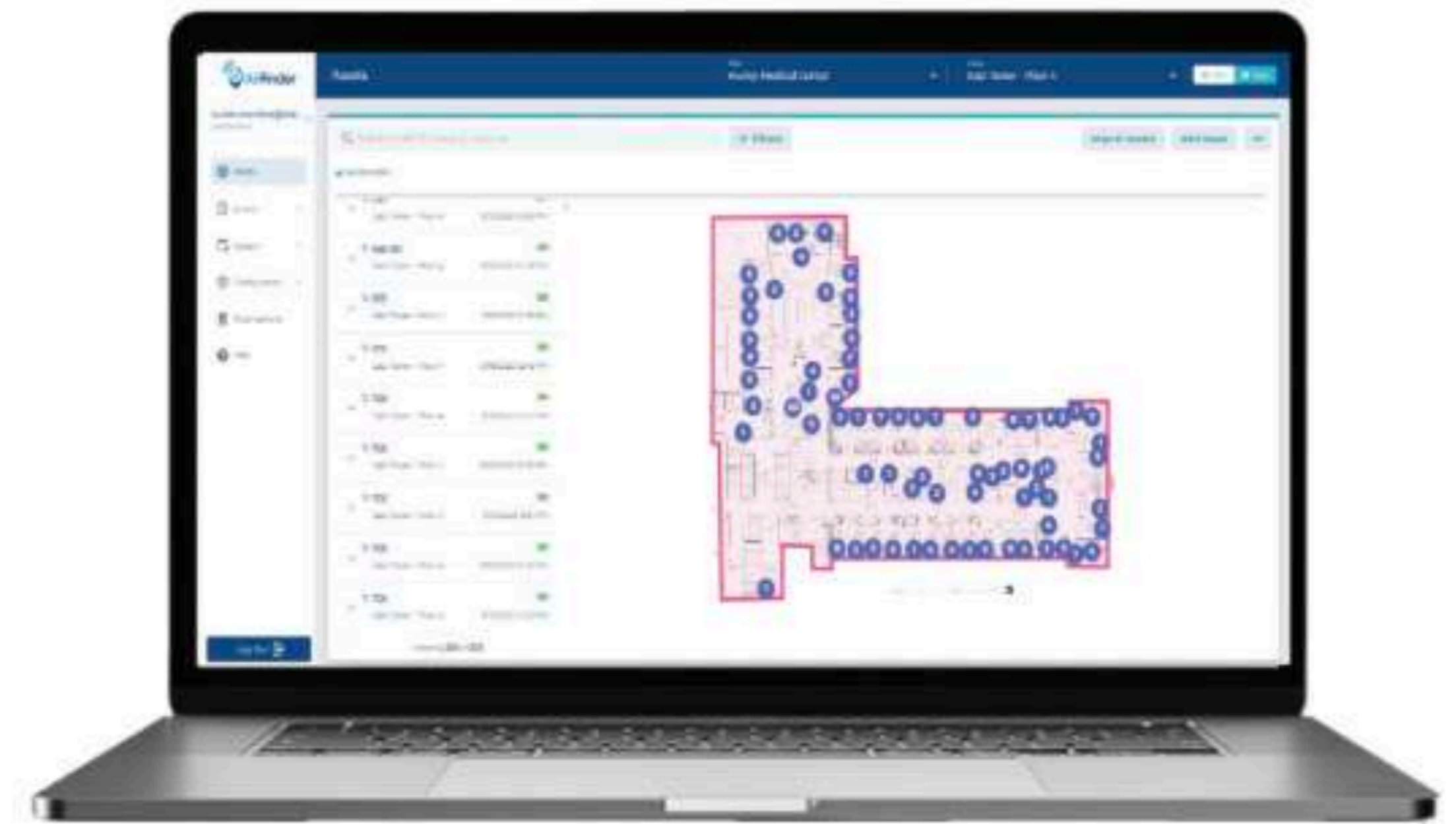
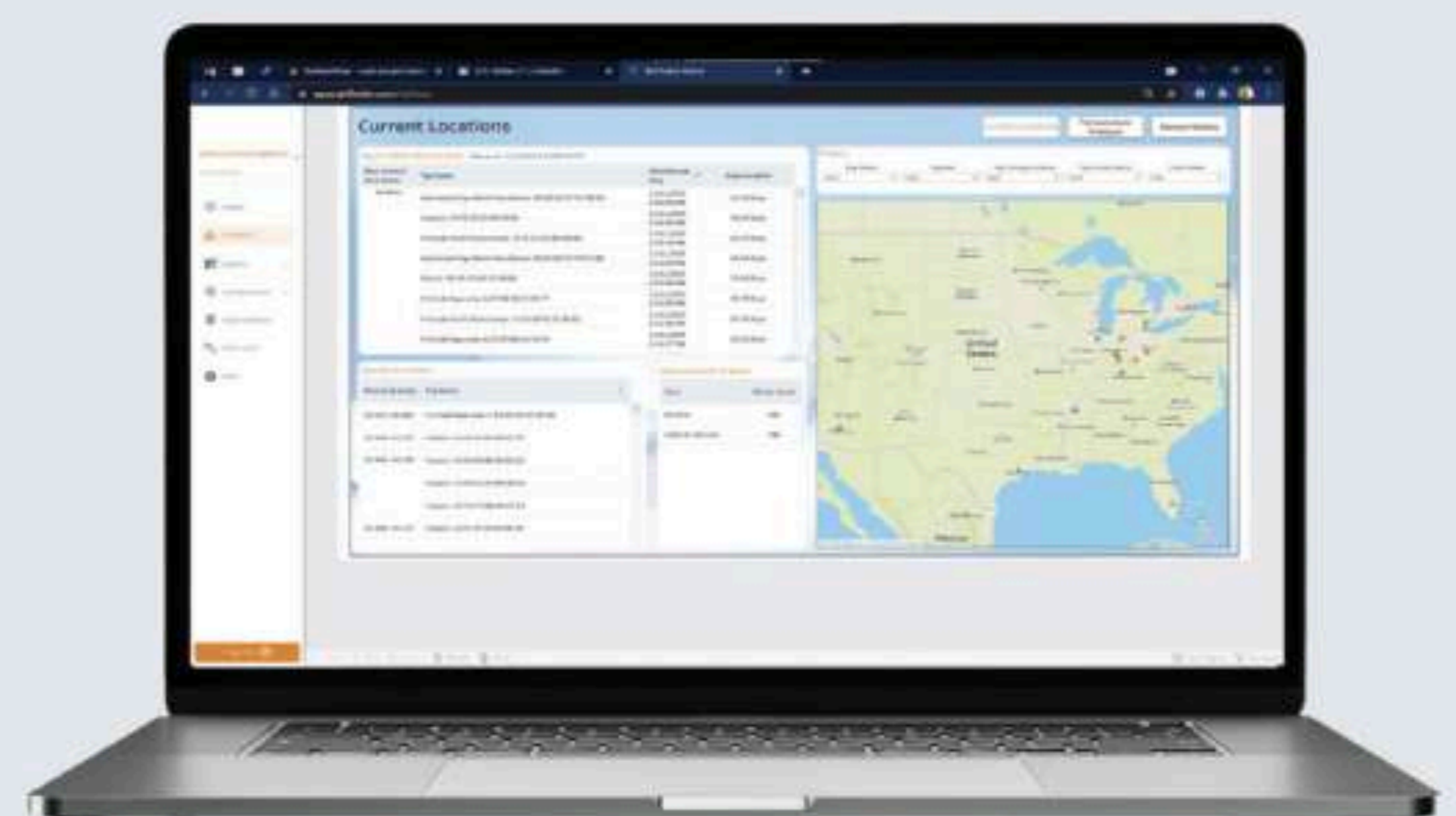


Tableau Integration

This integration is not used often but is available to those who want access to it. This is an app that takes the data from a company's database and puts it into a reporting structure.



Zone Tracking

You are able to define geofences for each work zone. Set up alerts to be notified when tagged equipment is moving from one zone to another.



Embedded Sensors

Tags have sensors allowing users to monitor critical data beyond location including temperature, pressure, acceleration, and more. This additional data allows users to make more informed decisions about the assets they are monitoring.



Handled Wood Manufacturing
Factory 2, 47th Street,
Jebel Ali Industrial Area 1
Dubai, UAE

info@handled.ae

+971 55 307 6258

