



高岭土
KAOLIN (CHINA CLAY)

石英砂 / 硅砂
SILICA SAND
(SILICA QUARTZ)



PT ALTER ABADI Tbk
INDONESIA

Member of Indonesian Stock Exchange of Jakarta
印尼恒德矿业（集团）有限公司（上市公司）

Subsidiary:

PT Nipsea Martapura Co. Ltd
PT Nippindo Kaolin Abadi
PT Bangunan Agung

PT Kaolindo Sakti Perkasa
PT Kaolin Belitung Utama
PT Inti Superindo Pratama

Philosophy

In the near future, PT Alter Abadi Tbk will enter the list of the world's leading kaolin industry.

At the same time to meet the market demand, our brand become a quality, a symbol of reliability and fast service.



信念

在不久的将来，恒德矿业（集团）有限公司将迈入全世界高岭土行业的众多领军之列。

在满足市场需求的同时，我们的品牌成为质量、可靠度和快速服务的象征。

A Message from The President Director

PT Alter Abadi Tbk is a kaolin producer with the largest kaolin mining concessions in Indonesia, specializing in the production of high-quality kaolin and other minerals such as ball clay for ceramic, silica sand for civil work and for glass-making as well, we also supply raw materials for paper-making, oil plant, porcelain, and rubber industries, tire, foam, soap, cosmetic, refractory bricks, white cement, glue, and its product derivatives. Ever since its establishment in 1979 PT Alter Abadi Tbk has continued to operate using advanced production technology and equipment from Europe, Japan, and China with an effort to increase production capacity, enhance product quality, and deliver new product varieties, to meet market demands. PT Alter Abadi Tbk as one of the biggest kaolin supplier in Asia is aiming to support local market demands and overseas, such as China, Vietnam, Thailand, India, Africa, Pakistan, Arab Saudi, Japan, South Korea, Taiwan, and some other Asian and European Countries.

Taking this opportunity, we would also like to present some historic events related to PT Alter Abadi Tbk. In 1993 we acquired the shares of four other kaolin producers making us the largest kaolin production capacity in Indonesia. In 1994 and 1996 we won the honour of the world-class Shawali Award Twice as a result of our prominent achievement in environment management. In 1997 we became the first Indonesian Kaolin Mining company to be successfully listed in the Jakarta and Surabaya Stock Markets. As a Commitment to our Passion and dedication for the Industry, We recently acquired two more local kaolin producers with two silica sand mining concessions a Jetty terminal concession in 2023 as our subsidiaries company, PT Inti Superindo Pratama & PT Bangunan Agung. We would also like to take this opportunity to honour and appreciate our partners and customers who motivate us to keep improving. We are incredibly grateful for your ongoing support and commitment to our business. Thank you for being a part of our journey.

PT Alter Abadi Tbk is committed to strive in every aspect of its business and development. In recent years our company has proven itself its effort to continuously grow and build strong presence to not only be the market leader of high-quality kaolin and silica sand in Asia, but globally. With huge demands from the market, we are dedicated to deliver with our increase in production capacity and enhanced quality, and always look forward to strengthening local and offshore partnership in the years to come.

Finally I give my heartfelt greeting to my dear customers and friends.

Rachman Hakim
President Director

董事总经理致辞

恒德矿业（集团）有限公司是印度尼西亚最大的一家高岭土矿业公司，专业生产优质的高岭土和其他矿产品，包括陶瓷所需的陶土、建筑用砂、玻璃砂和一些化工原料等，同时也是造纸、油漆涂料、陶瓷、橡胶、轮胎、泡棉、肥皂、化妆品、耐火砖、白水泥、胶水等行业的原材料供应商，公司自1979年创办以来，从欧洲、日本和中国引进了先进的生产技术和设备，不断扩大生产，改善品质，增加品种，目前已发展成为亚洲最大的高岭土生产厂家。我们的产品除了供应本国各大小企业需求之外，还远销到中国、越南、泰国、印度、非洲、巴基斯坦、阿拉伯、日本、韩国、台湾等众多欧亚国家和地区。

借此机会，让我列举恒德矿业（集团）有限公司几个历史性事件。1993年我们兼并了印尼其他四家具有较大规模的高岭土企业；1994年和1996年我们两次获得了世界级的环境保护沙瓦利奖，作为对我们关注环保工作的表彰；1997年我们成为在雅加达和泗水股票市场的第一家成功上市的印尼高岭土矿业公司；2023年我们又再兼并了二家高岭土和两家硅砂公司以及一家码头公司，成为子公司，即PT Inti Superindo Pratama和PT Bangunan Agung，此外我们致力于向尊敬的客户销售我们的高品质高岭土和硅砂/石英砂等矿产品。

这些历史性事件表明恒德矿业（集团）有限公司一直在不断地追求发展和成长。今天，我们不仅是亚洲著名的高岭土和硅砂公司，而且也是世界上十大高岭土供应商之一。我们将继续努力发展生产，用我们的优质产品和良好的服务同顾客建立起长久的合作关系。

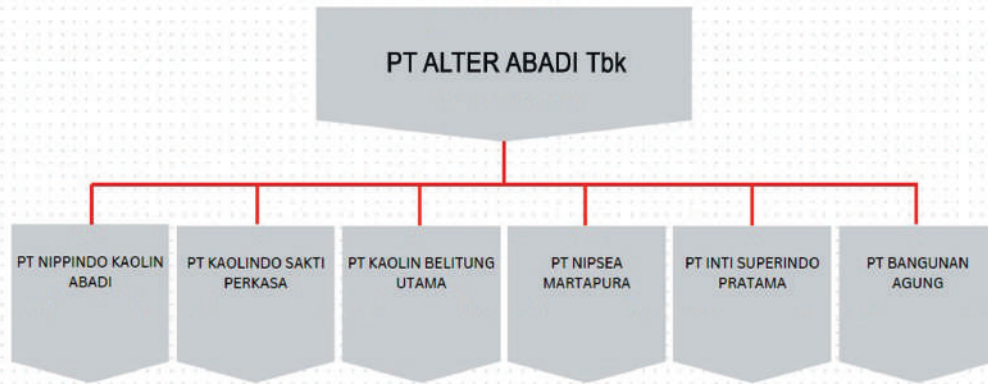
最后，向我们亲爱的客户和朋友们致以诚挚的问候。

许世经 / 董事长兼总经理
恒德矿业（集团）有限公司



我们公司结构 Our Company's Structures

ORGANIZATIONAL STRUCTURE PT ALTER ABADI Tbk AND SUBSIDIARIES (2023)



PT ALTER ABADI Tbk

- Located at Belitung Island, Indonesia
- Kaolin Manufacturer

PT NIPPINDO KAOLIN ABADI

- Located at Belitung Island, Indonesia
- Kaolin Manufacturer

PT KAOLIN BELITUNG UTAMA

- Located at Belitung Island, Indonesia
- Kaolin Manufacturer

PT KAOLIN SAKTI PERKASA

- Located at Belitung Island, Indonesia
- Kaolin Manufacturer

PT NIPSEA MARTAPURA

PT Nipsea Martapura is a trading company that operates under PT Alter Abadi Tbk which operates mainly in producing KAOLIN and SILICA SAND.

Company goals is to assist and help maintain our relationship to our existing to our customer and to promote our main company product to new customer.

PT INTI SEPRINDO PRATAMA

- Located at Belitung Island, Indonesia
- Kaolin & Silica Sand Trading Company

PT BANGUNAN AGUNG

- Located at Belitung Island, Indonesia
- Dedicated Port (Tersus Port)

Location Plant



Our mining area is located in Belitung Island of Bangka-Belitung Province, in the Java Sea. The island is well-known for its rich reserve and high-quality kaolin (china clay). Based on latest data update, our company holds a total of 1,870 hectare of kaolin mine, with mine reserves of more than 100 million tons, and 500 hectare of silica sand mine.

We are committed to be the market leader in the industry, serving and delivering market demands with increased production capacity and enhanced quality, and continually improving and innovating to better serve our clients.



工厂位置

我们的工厂位于印度尼西亚邦加勿里洞省的勿里洞岛上，那里储藏丰富的优质高岭土矿。经确认，我们拥有的1870，35公顷的矿区里高岭土储藏量超过1亿多吨，我们还拥有500多公顷硅砂矿也在这个岛上。我们的产量一直在不断增加以满足市场的需求。

Essential Raw Material for End-Products (Silica Sand)

- ▶ Glass (Water Glass, Glass Sheet, Glass, Solar Panel, Automotive Glass, Float Glass, etc.)
- ▶ Ceramic Industry (Wall Tile, Floor Tiles, Sanitaryware, Tableware, etc.)
- ▶ Construction Materials
- ▶ Chemical Industry
- ▶ Water Treatment Plan
- ▶ Sand-Blasting Material
- ▶ Foundry



Our Silica Sand

Brief Introduction to Our Silica Sand

Our main Product is Kaolin and We produce Silica Sand as a byproducts

We acquire our License for Silica Sand in 2016

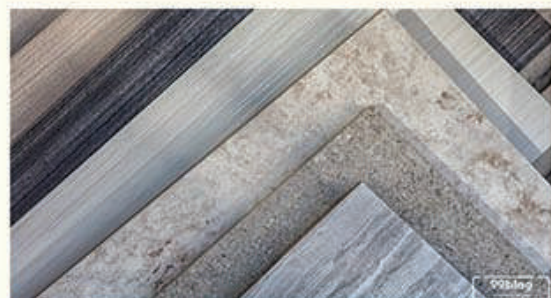
We also have received our export License for Silica Sand

Our ready stock Silica Sand are more than 2 million MT



Essential Raw Material for End Products (Kaolin)

各类工业原料



To meet the increasing demand of the world market, we have expanded our kaolin output year after year. We also work hard to ensure a consistent quality and to diversify our products for the different purposes of our end-users. Our products are indispensable raw materials for the following types of industrial production:

- Paper-making
- Pesticide carrier
- White cement
- Porcelain
- Improvement of farm soil
- Fire brick
- Paint
- Fiber glass
- White-washing materials, and
- Rubber
- Cosmetic
- Welding rod
- Soap and detergent
- Printing oil
- Foamex latex
- Processing of crude palm oil, etc

In addition to our kaolin products, we are also a big supplier of ball clay, white sand and some other chemical materials.

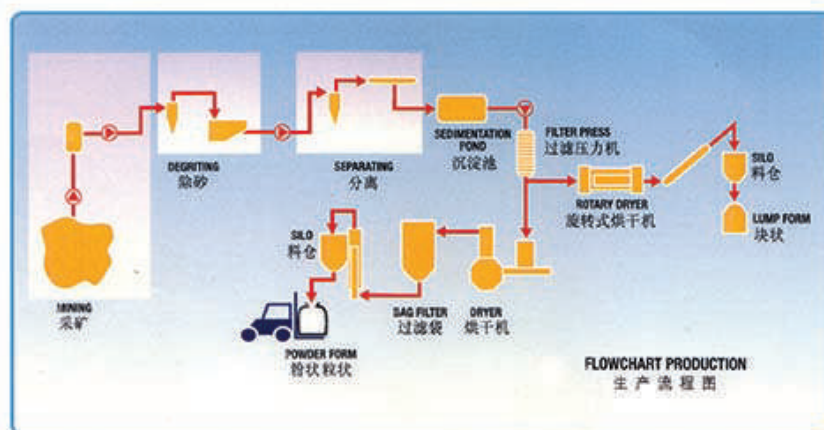
为了满足市场的需要，多年来，我们一直不断提高产量，保证稳定的质量并使产品多样化以适应更多用户的要求。我们的产品是下列各类工业生产不可缺少的原材料：

- 造纸
- 农药载体
- 白水泥
- 陶瓷
- 土壤改良
- 耐火砖
- 油漆
- 玻璃纤维
- 涂料
- 橡胶
- 化妆品
- 焊条药
- 肥皂和洗衣膏
- 油墨
- 泡棉
- 棕榈油生产，等

除此之外，我们还大量供应陶土和高白砂等化工原料。

Process Flow

The good natural geography and high-quality kaolin resources on Belitung Island allow us to adopt more advanced open-pit mining methods. In the raw mining stage, the product quality is pre-controlled in advance, and reasonable and effective processes are used to ensure the production of high-quality products. The kaolin raw is processed through pulping, impurity removal, grading, pressure filtration, drying, and finished product packaging to produce high-quality kaolin products that meet various needs of customers.



工艺流程

勿里洞岛上良好的自然地理条件和优质的高岭土资源使我们能够采用较先进的旱采旱运露天开采方式。在原矿开采阶段就提前对产品质量进行预控，运用合理有效的工艺保证生产出优质的产品。高岭土原矿经过制浆、除杂、分级、压滤、干燥、成品包装等工序，生产出满足客户各种需求的优质高岭土产品。

Technical Specification for Kaolin

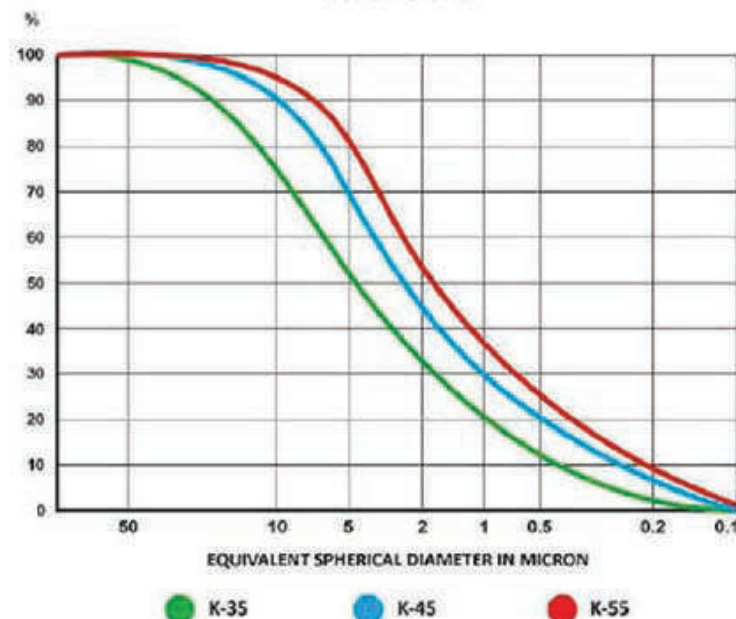
Chemical Analysis 化学分析

Silica (SiO ₂) 氧化硅	最小 46% min.
Aluminium (Al ₂ O ₃) 氧化铝	最小 37% min.
Iron (Fe ₂ O ₃) 氧化铁	最大 0.7% max.
Titanium (TiO ₂) 氧化钛	最大 0.2% max.
Magnesium (MgO) 氧化镁	最大 0.1% max.
Calcium (CaO) 氧化钙	最大 0% max.
Sodium (Na ₂ O) + Potassium (K ₂ O) 氧化钠, 氧化钾	最大 0.65% max.
Lost in ignition 烧失	12%-14%

Physical Analysis 物理分析

Brightness 白度	Particle size Distribution (Below 2 Micron) 颗粒大小分布 (2微米以下)	Screen residu in 325 mesh % 325目过 筛残渣 (%)	Moisture % Max 水分最大			From 形状	PH 10% solid 固体	Abrasion (AT 1000%) 摩擦
			Lump 块	Powder 粉	Granular 颗粒			
78 +/-2	28 min	1	18	3	-	Lump or powder 块或粉	5.5 - 6.5	18
80 +/-2	33 min	1	18	3	-	Lump or powder 块或粉	5.5 - 6.5	15
82 +/-1	38 min	0.02	18	2	2	Lump, powder or granular 块, 粉或颗粒	5.5 - 6.5	12
83 +/-1	42 min	0.02	-	2	2	Powder & Granular 粉或颗粒	5.5 - 6.5	12
84 +/-1	52 min	0.01	-	2	-	Powder 粉	5.5 - 6.5	10

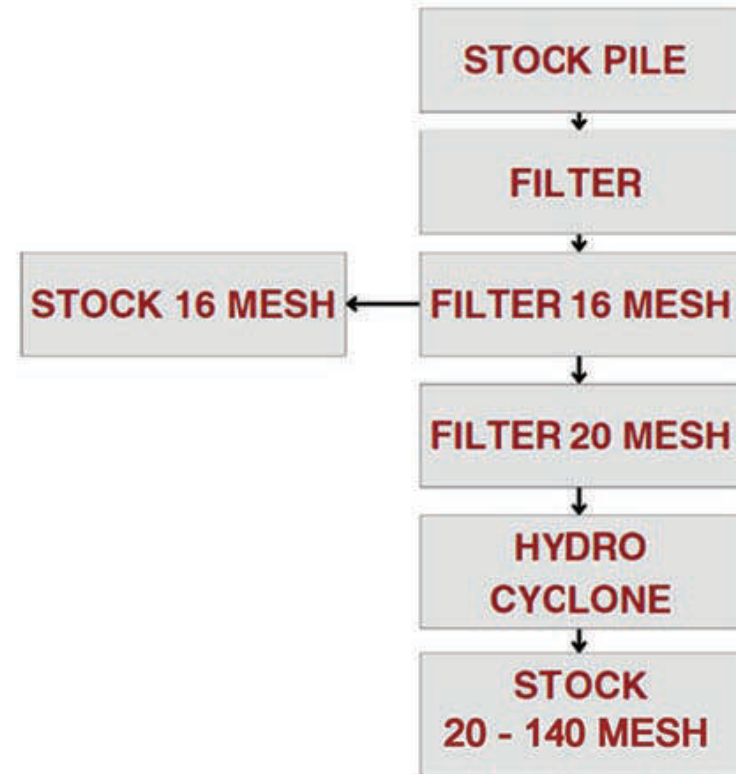
PARTICLE SIZE DISTRIBUTION OF
K-35 K-45 K-55 FINNER THAN
的颗粒大小分布



Technical Specifications for Silica Sand

Parameter	Unit	Result	Methods
SiO ₂	%	99.80	XRFFSI
Al ₂ O ₃	%	0.28	XRFFSI
Fe ₂ O ₃	%	0.01	XRFFSI
CaO	%	<0.01	XRFFSI
MgO	%	<0.01	XRFFSI
Na ₂ O	%	0.04	XRFFSI
K ₂ O	%	<0.01	XRFFSI
TiO ₂	%	<0.01	XRFFSI
Cr ₂ O ₃	%	<0.01	XRFFSI
MnO	%	0.01	XRFFSI
P ₂ O ₅	%	0.01	XRFFSI
SO ₃	%	<0.01	XRFFSI
LOI	%	0.14	XRFFSI
Si	%	46.66	XRFFSI
BaO	%	<0.01	XRFFSI
SrO	%	<0.01	XRFFSI
Sum	%	100.29	XRFFSI

Process Flow for Silica Sand



Equipments



Truck



Wheel Loader



Excavator



Forklift

Quality Control and Development

Since the establishment of our company we set up our quality control system according to the international quality standar. We not only introduced the advanced equipment for our production from Germany, Sweden, Great Britain and Japan, but we also imported modern instruments for our laboratory to guarantee the consistent quality of our products. All products from our plant shall pass the test before dispatch. High quality of products has won good reputation for us.

Besides we are also committed to developing new products. For example the calcinated kaolin and modified kaolin shall be our new products to be soon delivered to the market.



质量管理与开发

自公司创建以来，就按照国际标准建立了严格的质量管理制度。公司不仅从德国、瑞典、英国、日本等国引进了先进的生产设备，而且还为工厂实验室购置了现代化的检测仪器，用以保障稳定的高品质质量。从工厂运出的产品，都经过了严格的质量检验。高质量的产品和及时的供货为我们赢得了良好的信誉。

除此之外，我们还不断地研究开发新品种。例如，煅烧高岭土和改性高岭土就是我们即将开发出的新产品。

Packaging and Shipping

To meet various market demands, we serve our kaolin clays in packed and bulk orders depending on the size / volume. For customers' convenience, our kaolin clays are packed into different weight classifications; 25kg, 40kg, 500kg, 750kg and 1,000kg, using polypropylene woven bags and kraft paper bags.

Having located in the east coast of Sumatra, Indonesia in the Java Sea, Belitung island is well-known for its turquoise blue sea that are moderately calm and shallow. In addition, Belitung island has four strategic ports; three in Belitung Regency and one in East Belitung Regency, serving cargo ships and ferry ships, making it convenient to deliver our kaolin to local and overseas customers.



包装与运输

我们的产品使用丙纶化纤袋和牛皮纸袋包装。

根据用户要求可以提供 25, 40, 500, 750 和

1000 公斤规格的包装。勿里洞岛四面环海，便利

的海港条件使我们的产品能够使用船迅捷地发运到

国内外各个用户，也可以散庄方式寄运至世界各地/

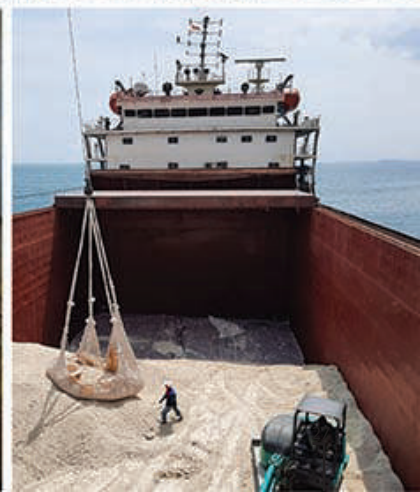
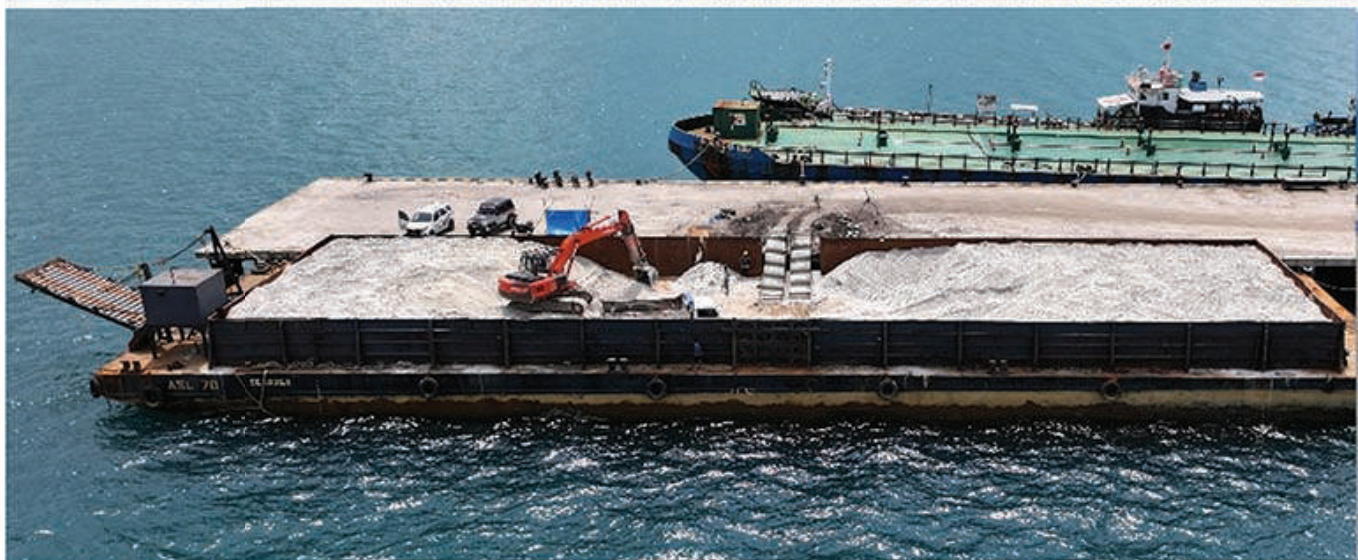
码头。

Our Customers for Kaolin

A big amount of our kaolin clay is delivered to our local users in Indonesia and the remaining amount of our output is to be exported to our overseas customers. We have supplied our kaolin products to Japan, Taiwan, South Korea, China, Hongkong, Pakistan, Sri Lanka, Thailand, Philippines, Singapore, Malaysia, Myanmar, India, Arab Saudi, Vietnam and Italy.

我们的用户

我们的产品除了满足印尼市场大量需要外，还出口到海外许多国家和地区，包括：日本、韩国、中国、香港、台湾、巴基斯坦、斯里兰卡、泰国、菲律宾、新加坡、马来西亚、缅甸、越南、印度、阿拉伯、意大利等。



Environmental Protection

To maintain a good environment for the human being we have worked out a long-term plan for the environmental protection. We try to minimize the impact on the mining area while we are extracting the mineral. In 1994 and 1996 we received twice in a row, the world-class Shawali Award due to our prominent achievement in environmental protection.

环境保护

为了保护好人类的生活环境，我们制定了长远的环境保护计划。在开采的同时，注意矿区的环境保护。由于我们的成绩显著，在1994年和1996年分别两次获得了世界沙瓦利奖。





**PT ALTER ABADI Tbk
INDONESIA**

Mining Industries

印度尼西亚恒德矿业（集团）有限公司（上市公司）

地址 (Address) : Asean Tower Building (5th floor)
Jl. K. H. Samanhudi No.10
Central Jakarta 10710
Indonesia

矿区 (Plant) : Jl. Sijuk, Desa Seru KM. 12
Tanjung Pandan, Belitung 33411
Indonesia

电话 (Phone) : +6221-3802865 (hunting)
传真 (Fax) : +6221-3840510

网站 (Website) : www.alterabadi.co.id

电子邮件 (E-mail) : info@alterabadi.co.id