

VGYPs AUTOMATION

**Solution Provider of:
PLC, SCADA, Calibration, Building Automation**





Vision

We offering
quality system &
services to global
customers in the
area of field
instrumentation
and Industrial
Automation.





Objective

To pursue a challenging career with dedication in a professional environment that will discover the potential in Us.





Core Values



We strive hard to discover new ideas & technology by consistently studying & experimenting.



We take responsibility to build trust & healthy relation with every growth partners.



We successfully bring out our customer from unfold & complex situation.

Core Purpose

To help people live an easy, secure & wealthy life.





About Us

- We focused on providing services in the field of Instrumentation, Automation.
- We supply & execute various projects related to factory process automation, data acquisition systems and embedded control.
- We have strong experience in the system integration, installation and commissioning. The company has expertise in many projects of installation of IP base camera, Fire Alarm System, Gas Detection System. Hence we can provide practical and best solution.
- VGYPS Automation undertake work on contract or subcontract basis.
- We also offers services in Basic and Detail Engineering in Instrumentation and process control, total automation of process using controllers, PLCs.
- We have the specialization in integrating new and used systems in various process applications.



A close-up, artistic photograph of two interlocking metal gears. The gear on the left is light gray and has the word 'Client' embossed on it in a bold, sans-serif font. The gear on the right is a darker, teal-colored metal and has the word 'Services' embossed on it in the same font. The gears are meshed together, and the lighting creates strong highlights and shadows, emphasizing the metallic texture and the interlocking teeth. The background is a soft, out-of-focus white.

Client Services



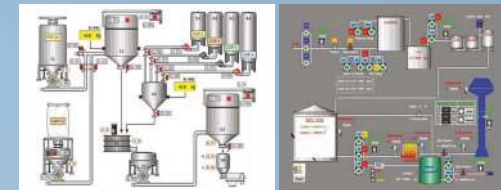
Products & Services

- **Field Instrumentation:**
 - Erection and Commissioning.
 - Field Instrumentation Calibration.



Automation Solution

- **Automation Solution:**
 - PLC and Controllers
 - SCADA System with application development and Report Generation



Calibration

We calibrate on field and off field all type of gas sensor.
Also calibrate smart transmitter.



Instrument Repair

We repair all type of PLC, HMI, VFD, Drives etc.





Gas Sensor

OLC 10 / OLC 10 TWIN

- Combustible gas detector
- Detects CH₄, Propane, Butane, Methane, Hydrogen, LPG and NGV
- For commercial applications (boiler rooms, charging rooms, car parks, etc.)
- Two OLC10 Twins can be hooked on one channel without an additional junction box or extra wiring for monitoring the same area
- Up to 4 OLC10 Twins can be used with our MX 32 2-channel controller
- ATEX 3G certified for use in zone 2

CE  ATEX ZONE 2



OLCT 10

- 4-20 mA output analog transmitter without display
- Available with catalytic bead, electrochemical or semi-conductor sensors
- Detects combustible, toxic and refrigerant gases (CO, NO, NO₂, Methane, Propane, Butane, Hydrogen, LPG, NGV and freons) - EN 14624 compliant with regards to R134a monitoring
- For commercial use (boiler rooms, hospitals, car parks, etc.)
- ATEX 3G certified for use in zone 2 (except semi-conductor version)

CE  ATEX ZONE 2
(except freon version)





Gas Sensor

OLCT 10N

- Digital transmitter without display
- Available with catalytic bead or electrochemical sensors
- Detects O₂, combustible, and toxic gases
- Available for detection of O₂, CO, H₂S, NH₃, NO, NO₂, Methane, Propane, Butane and Hydrogen
- For commercial and light industrial applications (laboratories, cooling rooms, hospitals, boiler rooms, waste water treatment plants, etc.)
- ATEX 3G certified for use in zone 2
- For use only with the MX43 controller

CE  ATEX ZONE 2



CTX 300

- 4-20 mA output analog transmitter with optional backlit display
- Plug-in and pre-calibrated sensors
- Available with electrochemical, infrared or semi-conductor sensors
- Detection of O₂, CO₂, toxic and refrigerant gases
- More than 30 different sensors are available for detection of most toxic gases in the industry
- Available in an infrared version for CO₂
- EN14624 compliant with regards to R134a monitoring
- For commercial or industrial applications in unclassified areas

CE 





Gas Sensor

OLCT20

- Designed for indoor or outdoor monitoring
- Complete reliability
- SIL2 suitable for combustible gases and O2
- Can be fitted on a housing with a M25 or 3/4" NPT thread
- Stainless steel detector provides protection and resistance to corrosive agents
- The precalibrated sensors can be disconnected by turning the head of the unit

CE  ATEX ZONE 0 or 1



MX 43

- Analog and digital controller
- 4 or 8 lines, up to 32 detectors
- Up to 32 fully programmable relays (OR, AND, NAND, NOR, Voting functions)
- Large graphic display
- Remoted modules (cost savings on wiring installation)
- Data logging capability with USB
- RS485 Modbus RTU and multiple analog outputs

CE   ATEX CATEGORY (1) (2)





Gas Sensor

MAX 52

- 2-16 channels
- SIL2 according to EN61511
- 2 discrete alarm relays per channel, 1 common Alarm 3 relay, 1 common Fault relay
- Keyboard or PC setup
- RS 485 output

CE Ex SIL ATEX CATEGORY (1) (2)



Micro PLC & HMI



Micro PLC
Cerious FlexiLogics



Back View for HMI
with expansion
(Up-to 3 expansions)



Back View for HMI
with expansion
(Up-to 5 expansions)

FP4057T
5.7" TFT Colour
Touch Screen



FP4030MT
3" Multicolour
Touch Screen



FP5121T
12.1" TFT Colour
Touch Screen



Manufacture

PCC Panel , MCC panel, Capacitor Panel, PLC Panel Also We provide certification to panel





Solar





Associates With Us



Power and productivity
for a better world™



imagination at work



CG Drives & Automation



Awards



14 - 15 Award for Best Entrepreneur by Mr. Vitthal Kamat



Awards



15 - 16 Award for third price for Company Presentation

Our Clients





Our Clients

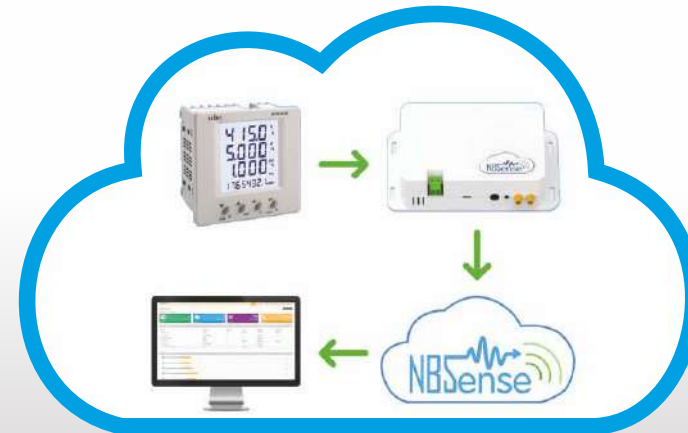




Energy Monitoring System

Is an IoT Based Energy Monitoring System with advance monitoring and analysis features.

Get real-time insights of Energy Consumption, helping to optimize the energy consumption of the facility.



Software Feature

- Access to smart Web-Dashboard
- Daily, Monthly, Yearly Data Trends
- Power (Active, Apparent, Reactive), Current Voltage (Line and Phase), Energy, Demand
- Power Quality Monitoring (PF, THD)
- Energy Sources and Distributions Mapping
- Analysis- Customized Selection of Time Period
- M&V Tool- For quick count of savings
- Data can export in XLS, CSV, PDF, JPG & PNG Format.
- Alarm Setup- Can set alarm of any parameter. with Web notifications, Email and SMS
- Comparison- consumption wise quick comparisons
- ECM Suggestions (Optional)
- ECM Verification (Optional)



Energy Monitoring System

Hardware Features

- Easy to Install - Plug and Play Module
- Compatible with existing smart meters
- Energy Meters, Temp, Humidity, Pressure, Flow, Fire System Sensors can be integrated on Single Dashboard
- Zero Data Loss System
- Can Connect to 20 Different Device

Product Specifications

- Communication Protocol: RS485, Ethernet
- Power Supply: 240 V AC OR 12 V DC (External SMPS)
- Network: GSM- 2G/4G, Wi-Fi, LAN
- Dimensions: 160 X 80 X 55 mm
- Weight: 150 grams
- Ingress protection class: IP 67
- Certification: CE, NABL
- Data Storage: Device- 16 GB, Cloud- Unlimited
- Data Frequency Range: 1 Min to 20 min
- Power consumption: 5 W
- Operating Temp. Range: -10 to +60 C



DG Monitoring

An IoT Based DG Monitoring System with advance monitoring and analysis features.

Get real-time insights of DG Fuel and Energy Generatio, helping to optimize the Fuel consumption of the facility.



Software Feature

- Access to smart Web-Dashboard
- Daily, Monthly, Yearly Data Trends
- Power (Active, Apparent, Reactive), Current Voltage (Line and Phase), Energy, Demand
- Power Quality Monitoring (PF, THD)
- Fuel level and consumption Monitoring
- Analysis- Customized Selection of Time Period
- Multiple DG Can Monitoring
- Alarm Setup - can set alarm of any parameter with Web notification, Email and SMS
- Specific Fuel Monitoring (kwh/Liter)
- Data can export in XLS, CSV, PDF, JPG & PNG Format



DG Monitoring

Hardware Features

- Easy to Install - Plug and Play Module
- Compatible with existing smart meters
- Energy Meters, Temp, Humidity, Pressure, Flow, Fire System Sensors can be integrated on Single Dashboard
- Zero Data Loss System
- Can Connect to 20 Different Device

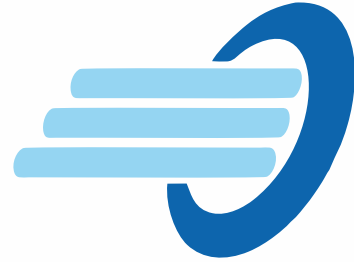
Product Specifications

- Communication Protocol: RS485, Ethernet
- Power Supply: 240 V AC OR 12 V DC (External SMPS)
- Network: GSM- 2G/4G, Wi-Fi, LAN
- Dimensions: 160 X 80 X 55 mm
- Weight: 150 grams
- Ingress protection class: IP 67
- Certification: CE, NABL
- Data Storage: Device- 16 GB, Cloud- Unlimited
- Data Frequency Range: 1 Min to 20 min
- Power consumption: 5 W
- Operating Temp. Range: -10 to +60 C



World wide reach





VGYPs AUTOMATION

Solution Provider of:
PLC, SCADA, Calibration, Building Automation

Regd. Add.:

C/302, Ganga Sagar CHS, Plot No.44, 45, 46,
Sector-20, Opp. Hotel Varishtta, Koperkhairane,
Navi Mumbai-400 709, Maharashtra.

Works Add.:

Gala No.9, Ganpat Patil Niwas , MIDC Phase II,
Opp. Vasant Compound-2, Kalyan-Shil Rd., Sonarpada,
Dombivali (East)-421 306, Dist. Thane, Maharashtra.

Register With.:



Ministry of MSME, Govt. of India



ISO 9001 : 2008
National Small Industries Corporation

राष्ट्रीय लघु उद्योग निगम लिमिटेड

Mob. No.:

+91 8828129392/93/94

E-mail:

info@vgypsautomation.com

Website:

www.vgypsautomation.com