



**SINCE
1995**

ONLY ONE STOP FOR SHIM
**ALIGNMENT
PRODUCTS**





PRE CUT SHIM

- ✦ Made Of High Quality Stainless Steel (Grade 304/316/321), Allowing . Re-use.
- ✦ Easy To Fit And To Remove
- ✦ Close Tolerances For Accurate Alignment
- ✦ Fully De-burred And Perfectly Flat.
- ✦ Pre Cut Shims Are Supplied In Packs Of 10 And Complete Kits Are Also Available.
- ✦ Each Shim Is Permanently Marked With The Respective Thickness For Quick And Easy Identification.
- ✦ All The Corners Are To Be Rounded Off To Suitable Radius Without Sharp Edges.
- ✦ tough And High Hardness Shim Prevent Thickness Deformation.

FEATURES:-

- ✦ Manufactured using Die-Punch Process and Laser Cutting.
- ✦ Perfectly Flat, absolutely Burr-free.
- ✦ Each Shim is permanently marked with the respective thickness for quick and identification.
- ✦ Makes alignment an easier task.

MATERIAL : STAINLESS STEEL,BRASS,COPPER ,M.S

THICKNESS : 0.05,0.10,0.20,0.50,1.00,2.00,3.00,4.00,5.00&6.00 MM



READY CUT SHIM



SHIM PACK

For accurate vertical machinery alignment

- ✦ Accurate machine adjustment is an essential element of any alignment process.
- ✦ SE single slot pre-cut shims are available in five different dimensions and in ten different thicknesses, in pack sizes of 10 pieces.

For accurate vertical machinery alignment.

Accurate machine adjustment is an essential element of any alignment process. Each kit of Sachin Enterprises single slot pre-cut shims offers a combination of popular shim dimensions and/or thicknesses.



SHIM KIT BOX

**BEARING WASHER****LOCK WASHER**

WASHER

- They are available in different Grades and sizes like S.S. 310, S.S. 316, S.S. 304, CRC etc. With TC.
- They are also available in different thickness like 0.2 MM, 0.5 MM, 1.0 MM, 2.00 MM etc.
- Washer always available in stock with bulk quantity .
- We are look for annual contract for washer.
- Also we manufacture washer as per customer drawing/sketch.

**FLAT WASHER****THRUST WASHER****TONGUE WASHER**



MOTOR SHIM



VEHICLE ALIGNMENT SHIMS



CUSTOM SHIM



SPACER CUSTOM SHIM

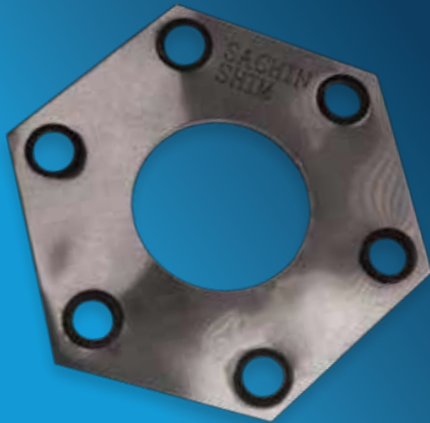
MATERIAL : STAINLESS STEEL,BRASS,COPPER ,M.S

Shims of all sizes – easy to use

- Manufactured using Die-Punch Process and Laser Cutting.
- Perfectly Flat, absolutely Burr-free.
- Each Shim is permanently marked with the respective thickness for quick identification.
- Makes alignment an easier task.

0.05 MM	2.00 MM
0.10 MM	3.00 MM
0.20 MM	4.00 MM
0.50 MM	5.00 MM
1.00 MM	6.00 MM

Loose Shims In Packs Of 10 – Even Special Shims



COUPLING SHIM



COUPLING SHIM



COUPLING SHIM



COUPLING SHIM

MATERIAL : STAINLESS STEEL,BRASS,COPPER ,M.S

Disc coupling advantages :

- Flexible Disc Couplings
- Over 25 Years Experience In Flexible Disc Couplings
- All Metal Construction
- No Lubrication
- No Moving Parts
- Long Life
- High Torsional Stiffness
- Precise Positioning - Zero Backlash

Features of washers:

- Plain Washer
- Lock Washer
- Toungh Washer
- Thrust Washer
- Smooth Finish
- Superior Quality
- Durability
- Rugged Construction
- Highly Durable
- Rust Resistance



RETAINER SHIM

- Laser Cutting Machine Or Die-punch Process Or Lathe Cutting .
- Perfectly Cutting As Per Customer Sketches /drawing.
- Each Shim Is Permanently Marked With The Respective Thickness And Absolutely Burr Free.
- Available In Different Materials, Different Size As Per Customer Requirement.

- We Are Manufacturing,& Supply The Stainless Steel turbine shim Using Advanced Technology.
- Perfectly Cutting As Per Customer Sketches /drawing.
- They Are Available In Different Grades And Sizes Like S.S. 310,s.s.316, S.S.304 ,cnc ,brass Etc With Tc. Customer Sketches/ Drawing.



TURBINE SHIM



BAIRRING SCHIM

Seastrom standards and ANSI standards in one search.
 Type B Plain Washers (ASME B 18.21.1 Edition 09-2009) are available in narrow, regular and wide series for each standard screw size.
 1. ID – Inside dimensions from .020" to 3.00" 2.OD – Outside dimensions from .050" to 4.00" 3.Thk – Thicknesses from .010 to .134
 Metallic materials available: Aluminum, Brass, Beryllium Copper, Copper, Phosphor bronze, Steel (cold rolled steel), Stainless steel 316, Stainless steel, Titanium, Carbon Steel , Mild Steel, Nimonic, Nickel, Inconel, Hastelloy, Monel
 Non-metallic materials available: Acetal, Fiberglass, Fibre, Kapton, Mica, Mylar, Neoprene, Nylatron, Nylon, Phenolic, Polyethylene, PTFE, PVC.
 We can also make Bearing Shims as per users requirements

- Custom Gaskets & Seals for the Pump & Valve Industry
- WE ARE leading supplier of high-quality gaskets and seals for the pump and valve industry.
- Die Cut Cork & Cork Rubber Products
- EMI RFI Shielding Gaskets
- Compressed Non-Asbestos Gaskets
- Custom Non-Metallic Washers



GASKET SHIM

**TUBE CLAMP**

- S.E. makes Different size of sizes of U/Tube
- Secures the shift rod into the steering column
- Includes one clamp and bushing
- Direct replacement for a proper fit
- No special tools required for installation
- Hexagon head bolts / Hexagon socket bolts + cover plate + clamp body + welded base plate

- We use composite Dia Punch to cut oil pump spacers so tolerance & Perfectly flat
- Oil Pump Spacers For Double Roller Timing Chain Shim Kit
- Provides The Required Clearance When Using A Double Roller Timing Chain Package includes Two Spacers And Four Bolts

**OIL PUMP SPACER****MATAL BUSHES**

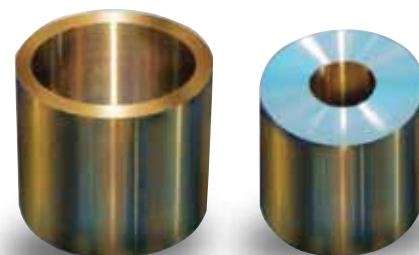
We are humbled to declare ourselves as the manufacturer and supplier of Industrial Metal Bushes.

The offered industrial bushes are unique thrust bearing surfaces which are capable of bearing the heavy thrust and pressure of rotors. Our offered industrial bushes are versatile in the thrust bearing capacity. The offered industrial bushes are commonly used in all major industrial rotor applications.

- Ideal thrust bearers.
- Hard and heavy.
- Substantially imperishable.

Standard Specification For Stainless Steel Coils and Strips

- **Specifications** : ASTM A240 / ASME SA240
- **Dimensions** : ASTM, ASME, and API
- **Width** : 1000mm / 1120mm / 1250 / 1525mm / 2000mm etc
- **Thickness** : 0.31mm-100mm
- **Length** : as per your requirement
- **Surface Finish** : 2B, 2D, BA, NO.1, NO.4, NO.8, 8K, mirror, Hot rolled plate (HR), Cold rolled sheet (CR), SATIN (Met with Plastic Coated) etc
- **Hardness** : Soft, Hard, Half Hard, Quarter Hard, Spring Hard etc.
- **Form** : Coils, Strip etc.

**SHIM ROLL**



SACHIN ENTERPRISES

Pushing Aim Beyonds The Limits...



Get In Touch

Corporate Office



SACHIN ENTERPRISES
Office No. 160, 2nd Floor,
Sunrays Shopping Center,
Charkop Market, Sector No. 5,
Kandivali (West), Mumbai-400067.

MANUFACTURING UNIT



SACHIN ENTERPRISES
Plot No 78-a Government Industrial,
Charkop, Kandivali West, Mumbai,
Maharashtra 400067.

Contact Details

+91 99204 98799
+91 22 2967 4625
admin@sachinshim.com
www.sachinshim.com

