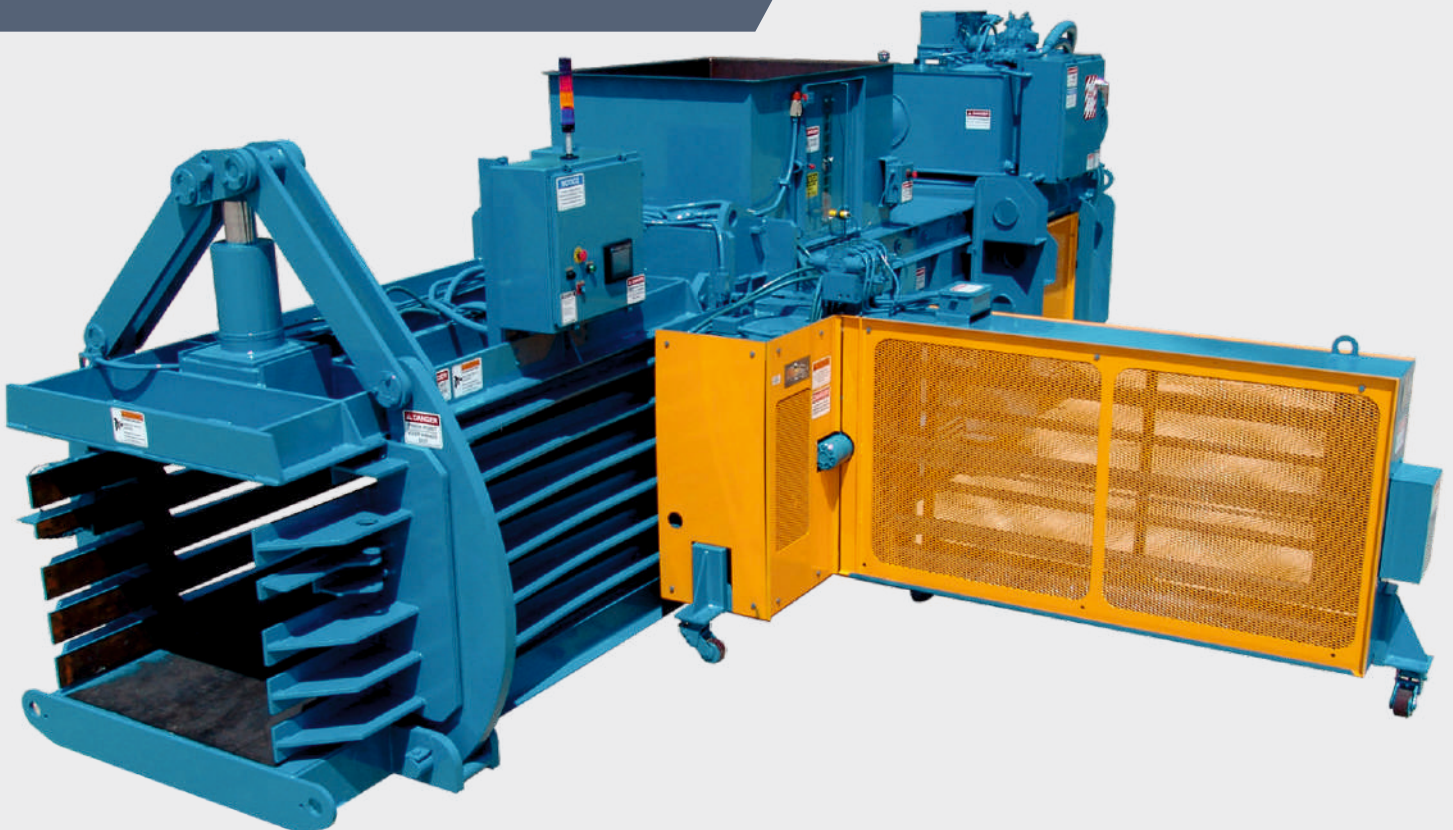




PAPER / PLASTIC / OCC CARTONS FULLY-AUTOMATIC BALING TECHNOLOGY

A MACHINE FOR TODAY'S STANDARD



Paper / Plastic / OCC Cartons Fully-Automatic Baling Technology



The Auto tie Horizontal type Heavy duty Baling Press is designed to bale Waste Paper / Plastic / OCC Cartons or any other similar fiber. This proven technology promises 20 - 24tons in a 40' HQ container. We have supported more than 100 clients to achieve their export requirements.

The Auto-tie baler should be considered when production requirements exceed 10 tons/day. Like Manual - tie horizontal balers, Auto-tie balers are also ideal for distribution centers, manufacturing facilities, mid to large size recycling and material recovery facilities (MRFs), and mid to large size printers Pressing forces from 400kN up to 1200kN with a closed press chamber resulting in very high bale weights, even on difficult materials. The bale size is 75x110cm with a length of approx. 1.2m. This have been further improved to handle different type of materials e.g. Cotton, Waste Cotton, Coir Fiber, Used Clothes, Polyester, short-cut fibers, jute.

We have focussed on economy, production capacity and reliability with highest safety standards in all ranges of our machines.

SPECIAL FEATURES:

- 400 kn - 1200 t main-press
- Single Cylinder System
- Automatic door locking system

SPECIFIC ADVANTAGES:

- 4 - 6 bales/h in single chamber baling press
- Automatic Bale Ejection System
- Fibers with difficult properties like comber, coir fiber, raw jute, cotton, polyester etc.
- Low space requirement
- More space for operator for a safe handling at the machine.
- No pitting due to direct mounting on the ground.

MODEL	BALE SIZE			BALE WEIGHT (kgs)	PRODUCTION (bales/hr)	MOTOR POWER (hp)	OVERALL SIZE (feet)
	Length (mm)	Width (mm)	Height (mm)				
ATB - 40	Adj.	800	720	Upto 250	up to 10	20	18' x 10' x 12'
ATB - 60	Adj.	1100	800	Upto 350	up to 10	30	23' x 11' x 12'
ATB - 80	Adj.	1100	800	Upto 650	up to 10	50	27' x 13' x 13'
ATB - 100	Adj.	1100	1100	Upto 700	up to 10	60	30' x 14' x 13'
ATB - 120	Adj.	1100	1100	Upto 800	up to 14	70	32' x 14' x 14'

Hoper for Material Loading:



Bale Tensioning System:



ADD-ON FEATURES:

- Steel Conveyor to decrease labour fatigue
- Auto-tie to improve productivity
- Horizontal cutter on feeding mouth for cutting excess material.
- Oil Cooler by Air/Water arrangements
- 180 deg Safety System.
- Continuous cycle arrangement with PLC.

HYDRAULICS:

- Hydraulic pumps with very low noise level.
- Leakage-free hydraulic pipe with O-ring.
- Indigenous compact design of the hydraulic control blocks offers a reliable function.
- 3 level safety interlocks for motor and pump.