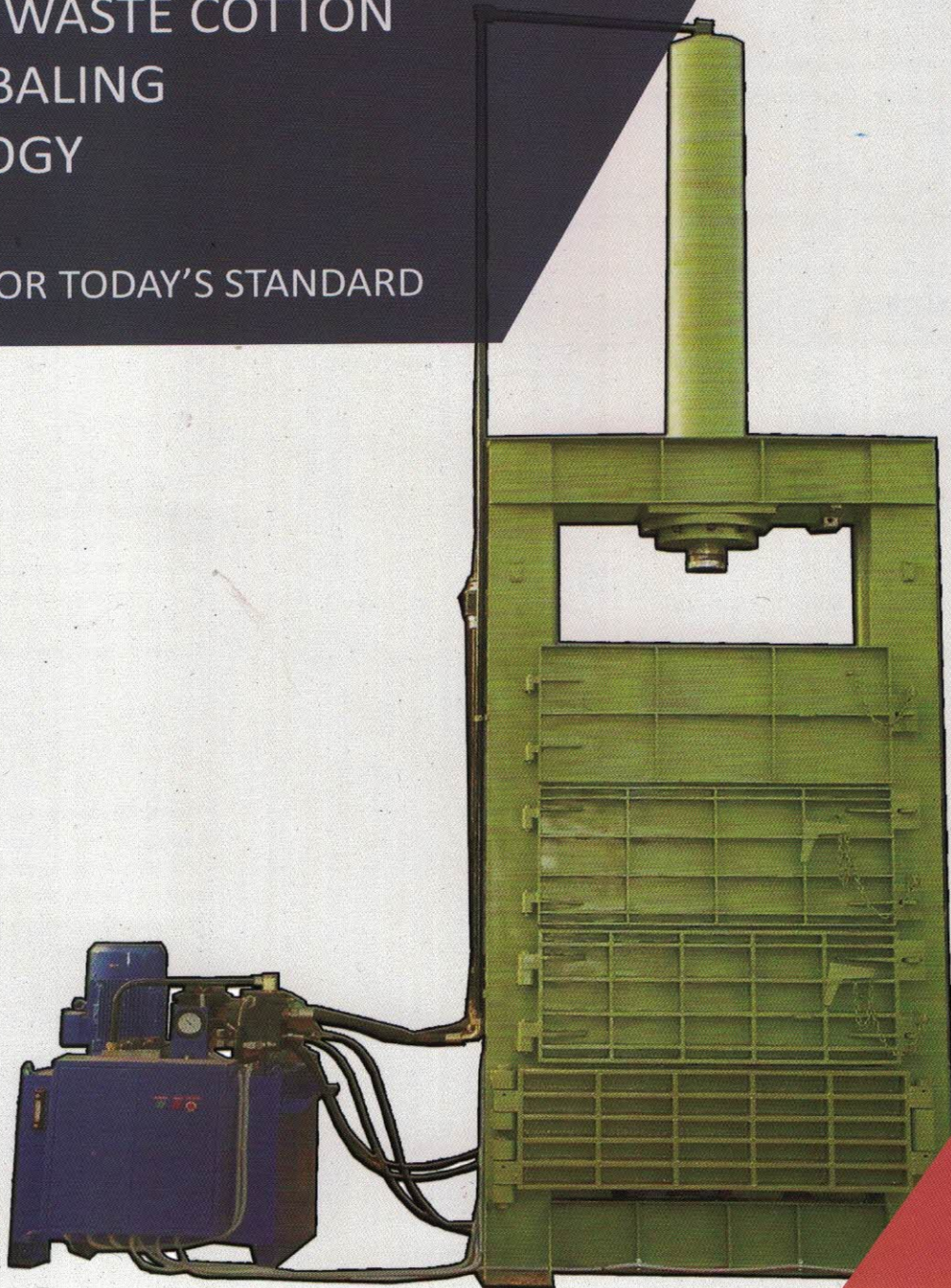




COTTON / WASTE COTTON MANUAL BALING TECHNOLOGY

A MACHINE FOR TODAY'S STANDARD



Cotton / Waste Cotton Manual Baling



The Manual door type Baling Press is basically designed to engage new startup and less spindle spinning mills from 5000 spindle to 25000 spindle. In this regard we have installed more than 200 machines of different capacities in and around the world. .

With the various weight and size options we have made practice of baling waste cotton or cotton even at very small units which inturn saved huge costs on transport. We have considered five different models which have different characteristics to perform at different size of units. From 90kgs-180kgs in terms of bale weight and production even reaches to 800kgs/hr. This have been further improved to handle different type of materials e.g. Cotton, Waste Cotton, Coir Fiber, Used Clothes, Polyester, short-cut fibers, jute.

We have focussed on economy, production capacity and reliability with highest safety standards in all ranges of our machines.

MODEL	BALE SIZE			BALE WEIGHT (kgs)	THROUGHPUT (bales/hr)	MOTOR POWER (HP)
	Length (mm)	Width (mm)	Height (mm)			
CB/03	1220	600	600	Upto 100	up to 3	5 / 7.5
CB/06	1220	600	600	Upto 130	up to 3	10
CB/09	1220	600	600	Upto 160	up to 3	15
CB/110	1270	510	660	Upto 180	up to 4	20
CB/110	1270	510	660	Upto 180	up to 6	25

SPECIAL FEATURES:

- 30 t - 110 t main-press
- Single Cylinder System
- Automatic/Manual door locking system

SPECIFIC ADVANTAGES:

- 3 - 6 bales/h in single chamber baling press
- Automatic Bale Ejection System
- Fibers with difficult properties like comber, coir fiber, raw jute, cotton, polyester etc.
- Low space requirement
- More space for operator for a safe handling at the machine.
- No pitting due to direct mounting on the ground.

ADD-ON FEATURES:

- Retainer Claws to decrease labour fatigue
- Rapid hydraulic cylinders*
- Fixed and Movable box arrangements which increases safety of the machine
- Oil Cooler by Air/Water arrangements
- Automatic Bale Tying.
- Continuous cycle arrangement without PLC.

HYDRAULICS:

- Hydraulic pumps with very low noise level.
- Leakage-free hydraulic pipe with O-ring.
- Indigenous compact design of the hydraulic control blocks offers a reliable function
- 3 level safety interlocks for motor and pump

FABTEX ENGINEERING WORKS
S.F NO: 7/1, SRIRAM NAGAR, PEELAMEDU,
COIMBATORE - 641 004.
T: +91 422 2625465 M: +91 94432 81802
www.fabtexbaler.com | info@fabtexbaler.com

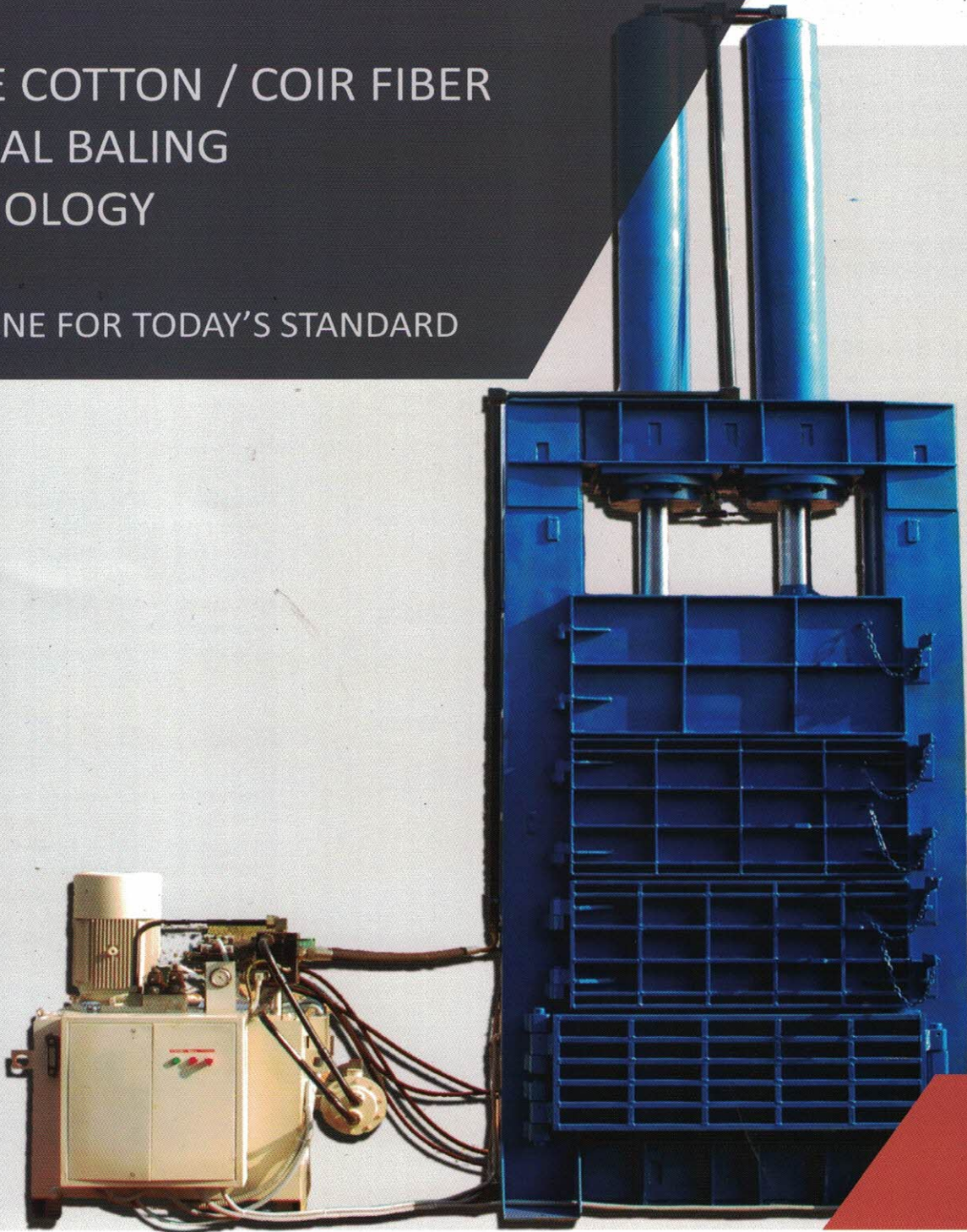


An ISO 9001:2015 certified Company



WASTE COTTON / COIR FIBER MANUAL BALING TECHNOLOGY

A MACHINE FOR TODAY'S STANDARD



Cotton / Waste Cotton
Heavy-Duty Manual Baling



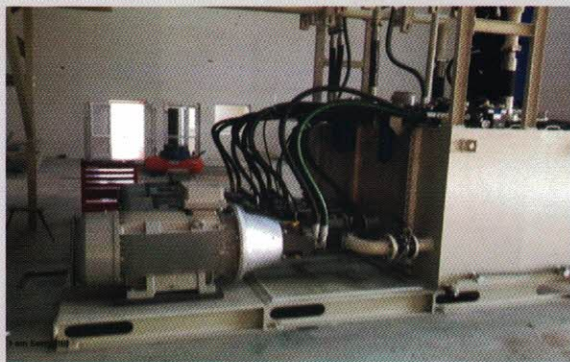
The Manual door type Heavy duty Double Cylinder Baling Press is designed to export of Waste Cotton / Coir Fiber or any other similar fiber. This proven technology promises 24 - 26tons in a 40' HQ container. We have supported more than 100 clients to achieve their export requirements.

With the various weight and size options we have made practice of baling waste cotton or cotton even at very small units which inturn saved huge costs on transport. We have considered five different models which have different characteristics to perform at different size of units. From 120kgs-180kgs in terms of bale weight and production even reaches to 800kgs/hr. This have been further improved to handle different type of materials e.g. Cotton, Waste Cotton, Coir Fiber, Used Clothes, Polyester, short-cut fibers, jute.

We have focussed on economy, production capacity and reliability with highest safety standards in all ranges of our machines.

MODEL	BALE SIZE			BALE WEIGHT (kgs)	THROUGHPUT (bales/hr)	MOTOR POWER (HP)
	Length (mm)	Width (mm)	Height (mm)			
HDB/015	1220	460	650	Upto 150	up to 2	25 / 30
HDB/020	1220	460	510	Upto 120 (Coir Fiber)	up to 4	25 / 30
HDB/022	1220	460	600	Upto 180	up to 3 / up to 6	25 / 30

Hydraulic Powerpack:



SPECIAL FEATURES:

- 150 t - 200 t main-press
- Double Cylinder System
- Automatic door locking system

SPECIFIC ADVANTAGES:

- 3 - 6 bales/h in single chamber baling press
- Automatic Bale Ejection System
- Fibers with difficult properties like comber, coir fiber, raw jute, cotton, polyester etc.
- Low space requirement
- More space for operator for a safe handling at the machine.
- No pitting due to direct mounting on the ground.

ADD-ON FEATURES:

- Retainer Claws to decrease labour fatigue
- Rapid hydraulic cylinders*
- Fixed and Movable box arrangements which increases safety of the machine
- Oil Cooler by Air/Water arrangements
- Automatic Bale Tying.
- Continuous cycle arrangement without PLC.

HYDRAULICS:

- Hydraulic pumps with very low noise level.
- Leakage-free hydraulic pipe with O-ring.
- Indigenous compact design of the hydraulic control blocks offers a reliable function
- 3 level safety interlocks for motor and pump

