



WELCOMES



ABOUT US: Having 77 years combined experience of manufacturing and Project management in Forging & Precision components machining , Automotive & Agriculture and Construction equipment ,Power and General engineering sector . Highly skilled work force with knowledgeable managers managing our facilities at Chakan ,Pune .

Core Values

Dehu industries Pvt ltd like to be reliable Supplier and would like to build sustainable business in components Supply's .

GROUP OF COMPANIES

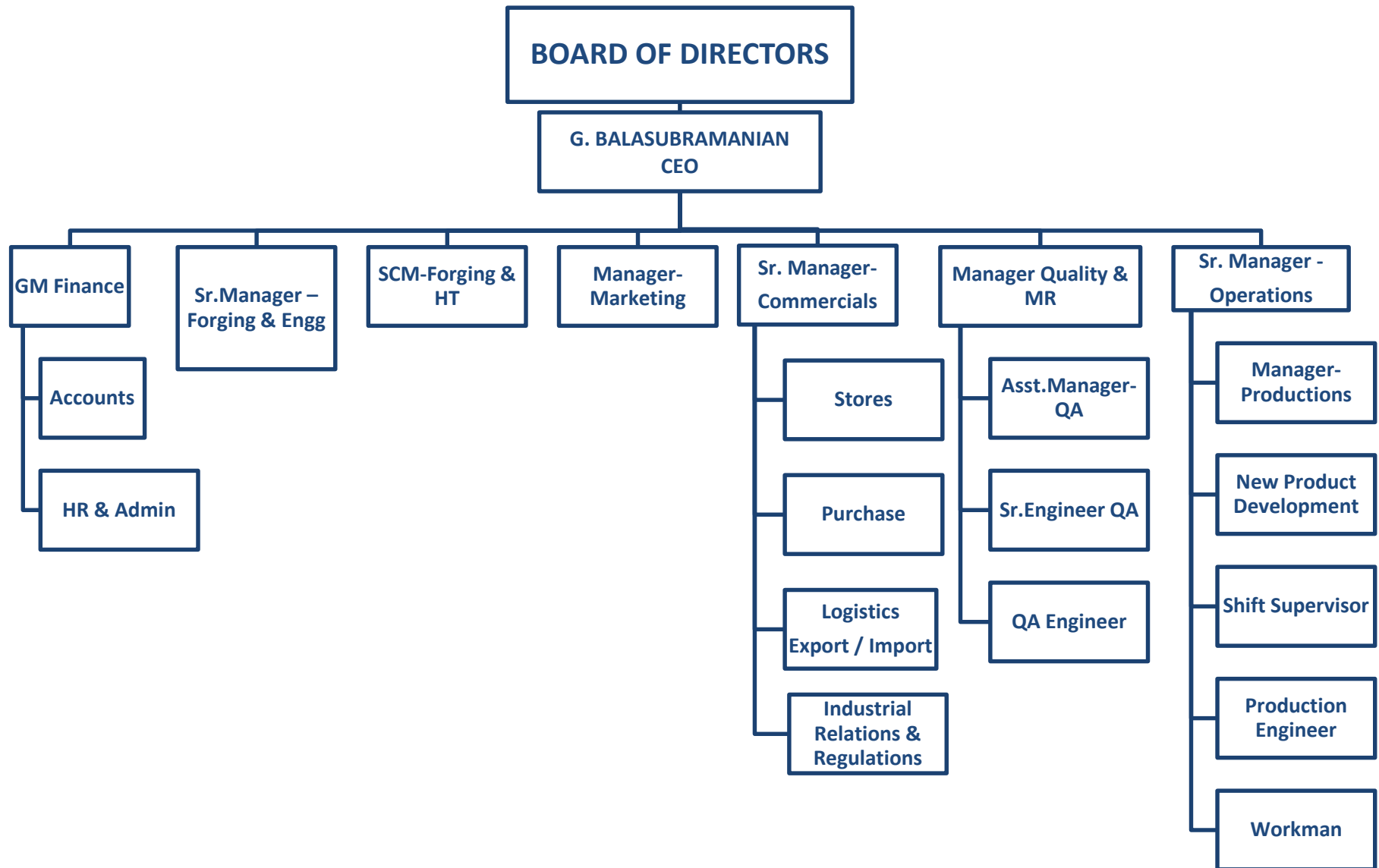
- Dehu Engineering India pvt ltd- We provide complete solution to the global fabrication needs with prime focus in Oil & Gas , Power & Process industries ,Design & manufacture Boilers & spares . ASME – S , U , R Certified
- **Dehu industries pvt ltd-** Company Engaged in Forging & Precision components for Oil & Gas, Aerospace, Railway industries .
- Stable industries Pvt Ltd -Company Engaged in Forging & Precision components for Automotive & Agriculture , Construction equipment's ,Power and General engineering sector, 3 C components .
- Daedalus lift & access equipment pvt ltd is manufacturer of AWP's / MEWP's .

CEO –Profile

Balasubramanian Ganapathy

- Having 26 years of Experience in manufacturing , Global Manufacturing & business development .
- Hands on experience on API – 5CT ,5L ,6A , 5DP, 7-1 .
- Sound knowledge in Oil & gas OCTG , Drilling products , completions Tools , cementing products , well heads , Pipe line valve and distributions .
- Had experience of USA & middle east Distribution operations .
- Started Country's largest API 5CT Coupling manufacturing facilities 2007 . Which was supplying couplings to North America , South America , Europe , middle east
- Handled Global customer like Schlumberger , Halliburton , Cooper Cameron , NOV .
- Supplied couplings to Large OCTG mills in world in North & south America , Europe , middle east .
- Handled large Oil & Exploration company approvals – PDO , state oil , KOC , OXY .
- Managing Group companies with four business Verticals .

Dehu Organizations chart





Pune Facilities & Manpower

Group Total Manpower – 230 Persons

Pune Staff –White Collar – 50 Persons

Pune Blue collar – 180 Persons

Pune Factory Area – 87000 Sq Ft

Covered Shed area – 72000 Sq ft

Future Plans –Additional 1,00,000 Sq ft Covered Area

Business Associates Shed area – 200000 Sq Ft

Regular Working Hours – 24 hrs , 6 DAYS in week .

Office hours – 8 hours

Annual Holiday – 14 Days

Training Planned for FY 2022-2023 – 1000 Hrs only Dehu industries alone in various topics to improve skills & awareness of the employees .

KEY FACTS

- DEHU INDUSTRIES PVT LTD – Incorporated in Year 2011
- Since 2019 Company started focusing on forgings and precision components Supply's.
- Forging capacity of 8000 Tons / Year – (Business Associates)
- Close Die Forging – 3000 Tons/Year (Weight range 0.5 kg to 100 kgs)
- Open Die Forging – 5000 Tons/Year (Weight range 100 kg to 1000 kgs)
- In-house Forging die design and dies manufacturing
- Heat treatment –Out sourced
- Laboratory with chemical & mechanical testing – Under Installations
- In-House machining facilities
- Additional Machining setup thorough (Business Associates)
- Pre machining – Out sourced
- Cutting Facilities – In house
- Customized ERP system.

DIE DESIGN & MANUFACTURING

- Forging 2D and 3D Models Drgs, Die Sinking Drgs. Prepared by well experienced engineers using AUTO CAD .
- Die Manufacturing Software at our supplier end - “DELCAM” and “UNIGRAPHICS”
- Die Shop fully equipped with VMC .
- Conventional machines include Grinder, Lathe Machine, Milling, Drilling, EDM machine – Out sourced .
- Facilities operated by a team of highly qualified and experience manpower.

Forging Infrastructure

Unit Description Product Range

CLOSE DIE FORGING :-

1. 3.0 Ton Hammer(NKH) –Wt. from 10-40kgs.
2. 2.0 - 5 Ton Hammer (NKH) -5 to 100 kgs.
3. 1.5 Ton Hammer(Massey)-3Kgs to 7Kgs.
4. 1.0 Ton Hammer (NKH)-1kgs to 3Kgs.
5. 0.5 Ton Hammer(Massey)-0.3kgs to 1kgs.

OPEN DIE FORGING :-

1. 2.0 Ton - Pneumatic Hammer 50 - 200 kgs.
2. 5.0 Ton - Pneumatic Hammer 200 - 3000 kgs.

Forging Facility



Continuous Type Furnace:-

- Auto Pusher Type Furnace – 2 nos. - Capacity 1000Kgs / hour .
- Quenching Media – Water / Oil / Polymer.
- PROCESS – Normalising / Annealing / ISO-Annealing - Hardening & Tempering etc.

Batch Type Electric furnace

- 1500 KG Batch Pit Type furnace
- Quenching and Tempering , Normalizing , Solution annealing .

Heat Treatment Facility

Continuous Hardening & Tempering / ISO Annealing Furnace



Quenching Oil and Polymer Tank With Agitation System



Continuous Normalising Plant.

LABORATORY

- Mechanical Testing : - Tensile , Brinell Hardness ,Rockwell Hardness, Charpy Impact, Micro hardness(Vickers and Knoop).
- Chemical Analysis:- Positive Material Identification (with 7 to 8 element details).
- Non Distractive Examination:- Visual Examination, Ultrasonic, Magnetic Particle inspection, Liquid Penetrant Inspection.
- Metallographic Analysis:- Macro / Micro Examination, Grain Sizes, Spectrographic Analysis.

INHOUSE MACHINING FACILITY



In-House Machining

CNC Machining Infrastructure

Sr.No	CNC Machines Make	Specs	Qty	Available Hrs
1	LMW -Turning	Chuck 200 x 350 TL	1	572
2	ACE MICROMATIC -Turning	Chuck 200 x 350 TL	1	572
3	MACPOWER-Turning	Chuck 200 x 400 TL	1	572
4	EXCEL -VMC	500 X450 -400 X350X 350	1	572
5	JOYTI -VMC	600 X360 - 510 X 410 X510	1	572
6	JOYTI -VMC	1000 X530 - 820 X510 X 510	1	572
7	JOYTI -Turning	Chuck 200 x 380 TL	4	2288
8	CNC Turning machines	Chuck 315 x 700 TL	2	1144
9	CNC Turning machines	Chuck 315 x 1000 TL - Bar size 90	1	572
10	CNC Turning machines	Chuck 500 x 1500 TL - Bar size 115	1	572
11	CNC Turning machines *	Chuck 250 x 500 TL	4	572
12	CNC Turning machines *	Chuck 165 x 240 TL	2	1144
13	CNC Turning Machines *	Chuck 250 X 1200	6	3432
14	VMC – BFW*	1600 X800- 1300 X750X800	1	572
15	CNC Turning Machines *	Chuck –Dia 315 , Dia 500 x 1500	3	1716
		Total Hours available for machining	30	15444

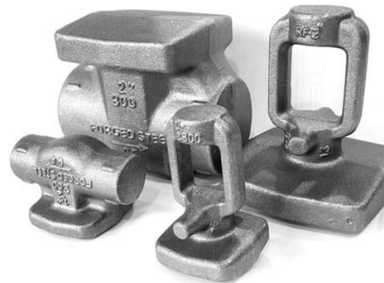
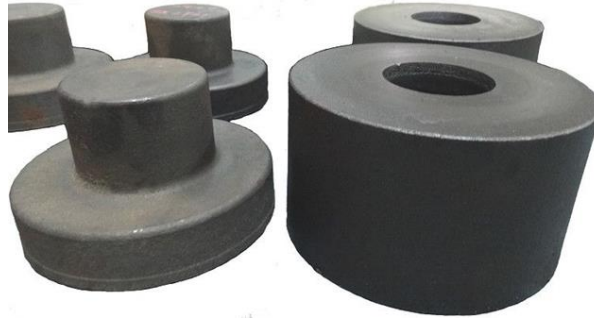
* Machine is are planned for installations in 2023

In-House Machining

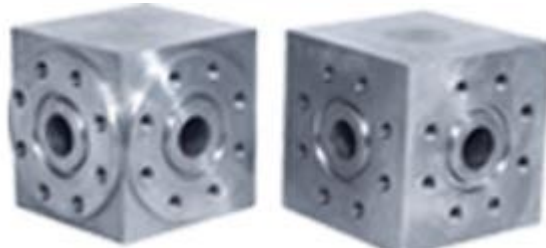
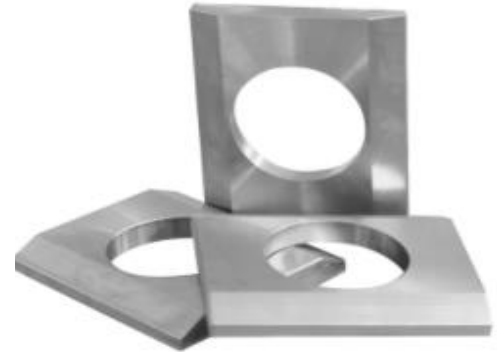
SR NO	DESCRIPTION OF MACHINE/MODEL	Specification	Available Hours in month
1	Conventional Lathe	Center height -18" x 118"	572
2	Conventional Lathe	Center height -15" x 83"	572
3	Conventional Lathe	Center height -15" x 83"	572
4	Conventional Lathe	Center height -12" x 60"	572
5	Conventional Lathe	Center height -12" x 60"	572
6	Conventional Lathe	Center height -12" x 60"	572
7	Conventional Lathe	Center height -12" x 60"	572
8	Conventional Lathe	Center height -12" x 60"	572
9	Conventional Lathe	Center height -12" x 60"	572
10	Conventional Lathe	Center height -12" x 60"	572
11	Band saw machine Automatic	Dia 375 MM Cutting	572
12	Band saw machine Automatic	Dia 460 MM Cutting	572
13	Band saw machine Automatic	Dia 220 MM Cutting	572
14	Band saw machine Automatic	Dia 150 MM Cutting	572
			8008



Forging Components



Machined Components



Testing

Chemical Testing – Out sourced .NABL approved

Mechanical Testing –Out sourced .NABL approved

Hardness Testing- In-house

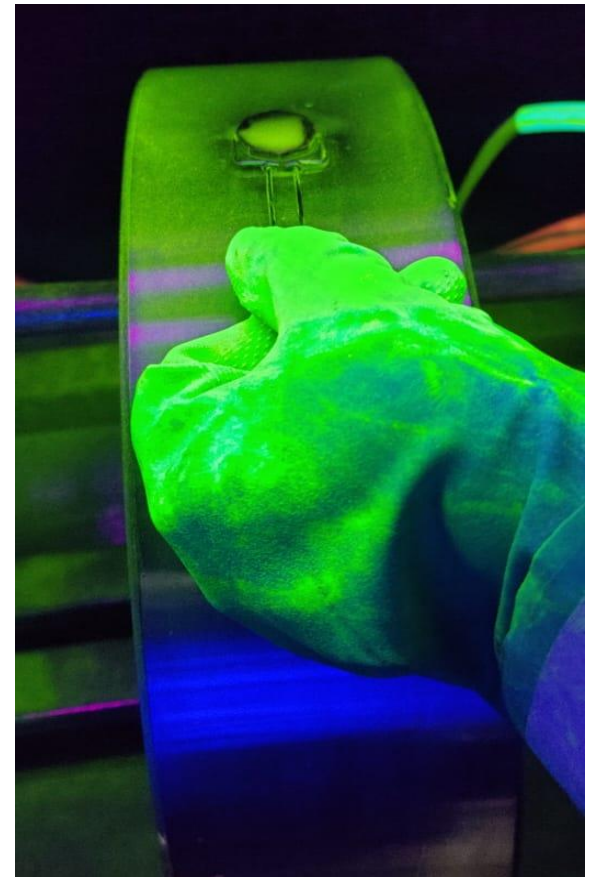
NDT CAPABILITIES

SR. NO	NDT	ASNT LEVEL II Personnel
1	MPI TESTING	3
2	DP TESTING	1

Ultrasonic Testing – Outsourced

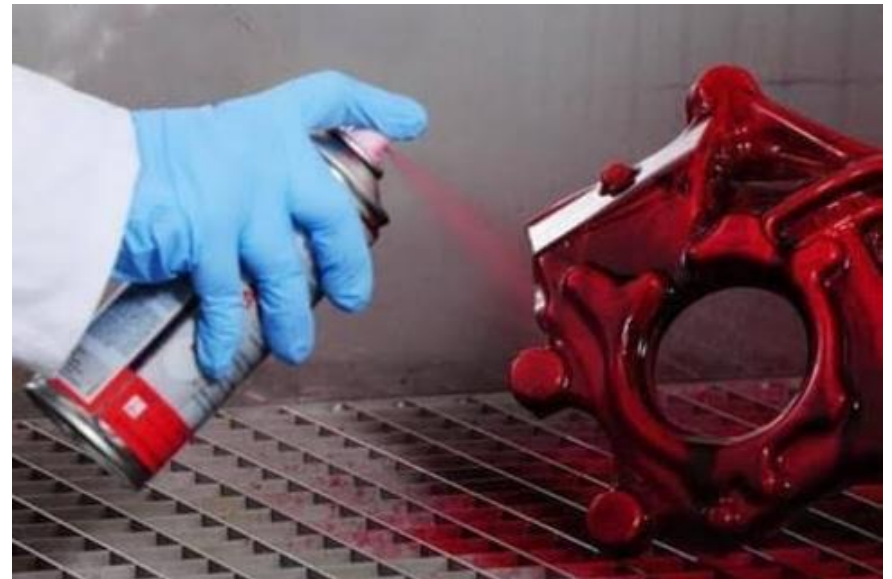
NDT CAPABILITIES

- MPI TESTING MACHINE-



NDT CAPABILITIES

- DYE PENETRANT TESTING-



Inspection Facility



Hardness Testing





Raw material

A105 ,LF2 , 4130,4140, 4340 , 4320 H . AISI 1030 to 1045

Nickle-Crome Material Grade-17NiCrMo6-4, 18CrNiMo7-6, 34CrNiMo6, 30CrNiMo8, 27NiCrMo,
DIN / AISI -25CrMo4, 34CrMo4, 42CrMo4, – En19, En24, ASTM A 182 F22 41Cr4 .

SS Material - AISI 410 AISI 304 / AISI304L AISI316 / AISI316L.

Duplex –Super Duplex –F51 , F53 , F55 .

Brass Material- AB, NAB, Aluminium material forging etc.

Steel procured majorly from renowned steel mills from India .

Steel procured as per well-defined RM Spec's per our customer RMS.

Meeting customer quality specifications

Steel purchased in following category – - CC Rolled / Ingot Rolled in sizes Dia 30 to RCS 250 for Closed die forged and

Open dies applications. – Ingots from 1.0 MT up to 3 MT for exclusive Open Die Forgings applications.

Strategic relationships & financial strength help us get steel with shortest lead times.

If we have defined schedules / forecasts from customers for at least 2 to 3 months confirmed delivery schedules.

We have a robust system to ensure full traceability on forging supplies

Certification

- ISO9001:2015 - Certificate from DQS
- ISO 14001 – Practising & Target is 2023 Q4 .
- ISO 45001 – Practising & Target is 2023 Q4 .
- AS9100D – Target is 2024 Q2 .
- API – 5CT , 6A , 20E – Target 2023 Q3



Future Plans

- Dehu Group planning for 5 Mn USD Capex in 5 Years Period Before 2026
- This investments Mainly on machinery's increase capacity and capability's
- All the Capex related to Oil & gas and Aerospace Industry Manufacturing needs .
- Dehu Group will leasing additional work space 100000 Sq Ft Covered area to maintain manufacturing .
- All the Capex will be towards Precision Machining , HT , Heavy Fabrications .



Contact Details

Dehu Industries Private Limited

Registered office

Gat No 390 Dehu Alandi Road,
Near Talawade Octroi Post,
Talawade Pune,
Maharashtra State 411062

G.Bala -CEO

g.bala@dehuind.com

Cell No +91 9011067039

THANK YOU

- We endeavour to cater to your specific requirements.
- To become the most preferred business partner for Forged, Machined & Assembled components by exceeding customer's expectations

