



联动驰而不息 合作共赢未来

Linkage and galloping without rest, Cooperation for a Win-Win Future

陈跃（江苏）技术有限公司

Chenyue (Jiangsu) Technology Co., Ltd.

地址：中国江苏省沭阳县金浪路10号

Add: No.10 Jinlang Road, Shuyang County, Jiangsu Province, China

Web: www.chinachenyue.com

Email: export@chinachenyue.com

Service: +86 400 019 2928



江苏凹凸慢机电科技有限公司

Jiangsu Automan Electromechanical Technology Co., Ltd.

地址：中国江苏省沭阳县金浪路5号

Add: No.5 Jinlang Road, Shuyang County, Jiangsu Province, China

Web: www.cyautoman.com

Email: export@cyautoman.com

Service: +86 400 687 6698





CHENYUE®

TECHNOLOGY CO.,LTD.

www.chinachenyue.com

SINCE 1993

WE MAKE YOUR BUSINESS DRIVE

蜗轮蜗杆减速机使用说明书 Worm Gearbox Instruction Manual

Model: CYRV、CYRW、CYVF、CYWF、
CYPC、双级系列/double-stage worm gearbox



安装使用前，务请详细阅读说明书！

Before installation and use, be sure to read the instructions in detail!!

目的

本文件应当由一个可靠的人在安全又干燥的环境中保存，从而使其得到最好的保护以便随时使用。

手册的目的是让责任人了解设备，用一种安全又持久的方式使用机器，包括使用方法、安排必要的人员和材料。

任何其他的使用和结构的改变应和厂家事先协商。

鉴于用户的使用方便，厂家会提供进一步的信息，并考虑用户所提出的改善建议，以使手册更好地服务于实际需要。

机器的分配转让时，必须附带用户手册，第一用户负责通知厂家新用户的地址，以便新用户能及时得到重要的或更新的信息。

铭牌

在每台机器上都有铭牌，具有厂家的商标及厂家和机器的名称、型号。

必须保证铭牌上的数据是可读的，应对其进行定期维护。

机器上面的铭牌不应被移走或者覆盖。
如果没有厂家授权，禁止使用任何其他标牌。

为了能从我方的保证中受益，用户应认真遵守手册所说的条款，尤其是下列内容：

- 1、在机器的允许使用范围内运转。
- 2、持续不断地、正确地、认真地进行维护。
- 3、正确恰当地使用，特别地培训那些有能力的工作人员。
- 4、使用厂家推荐的原装备件。

Purpose

This document should be kept by a reliable person in a safe and dry environment so that it is best protected and ready for use.

The purpose of the manual is to enable the responsible person to understand the equipment and to use the machine in a safe and durable way, including the method of use and the organization of the necessary personnel and materials.

Any other changes in use and construction should be negotiated in advance with the manufacturer.

For the user's convenience, the manufacturer will provide further information and take into account the improvements suggested by the user in order to make the manual better serve the actual needs. When a machine is transferred, it must be accompanied by a user manual, and the first user is responsible for informing the manufacturer of the new user's address so that the new user can receive important or updated information in a timely manner.

Nameplate

Each machine has a nameplate featuring the manufacturer's logo and name, and the machine model.

It is important to ensure that the data on the nameplate is readable and that it should be regularly maintained.

The nameplate on the machine should not be removed or covered. The use of any other nameplate is prohibited without the manufacturer's authorization.

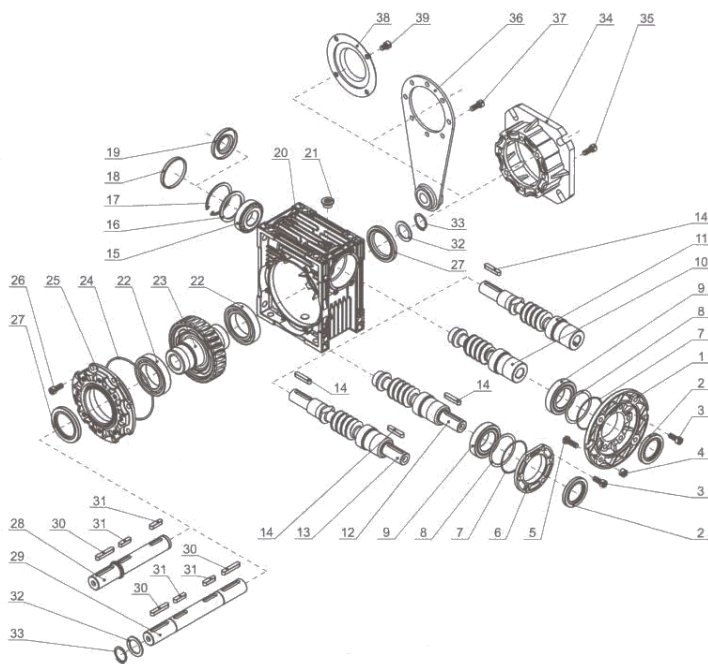
In order to benefit from our guarantee, the user should carefully observe the terms stated in the manual, especially the following:

1. Operation within the permitted range of use of the machine.
2. Continuous, correct and careful maintenance.
3. Correct and appropriate use, with special training for those staff who are competent.
4. Use original spare parts recommended by the manufacturer.

产品简介

本说明书适用产品为以下系列：CYRV、CYRW、CYVF、CYWF、CYPC、双极。

说明书图片仅供参考，具体以包装箱内实物为准，请选择性阅读说明。



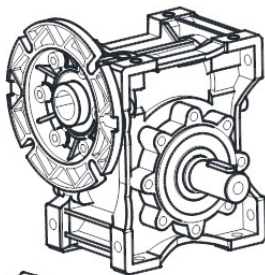
1 电机法兰 Flange PAM	11 孔输入轴输入蜗杆 Double ext. PAM worm	21 油泵 Plug cock	31 平键 Parallel key
2 油封 Oil seal	12 轴输入蜗杆 RV worm	22 轴承 Bearing	32 垫圈 Washer
3 内六角圆柱头螺钉 Hexagon socket head cap screw	13 双轴输入蜗杆 Double ext. RV worm	23 蜗轮 Worm wheel	33 轴用弹性挡圈 Circlip for shaft
4 六角螺母 Hexagon nuts	14 平键 Parallel key	24 O形橡胶密封圈 O-ring	34 输出法兰 Output flange
5 六角头螺栓 Hexagon bolt	15 轴承 Bearing	25 侧盖 Bearing support cover	35 内六角圆柱头螺钉 Hexagon socket head cap screw
6 输入端盖 Gear unit cover	16 垫圈 Washer	26 内六角圆柱头螺钉 Hexagon socket head cap screw	36 扭力臂 Torque arm
7 O形橡胶密封圈 O-ring	17 孔用弹性挡圈 Circlip for hole	27 油封 Oil seal	37 内六角圆柱头螺钉 Hexagon socket head cap screw
8 调整垫片 Spacer shim	18 盖子 Cap	28 单向输出轴 Single output Shaft	38 保护盖 Protection cap
9 轴承 Bearing	19 油封 Oil seal	29 双向输出轴 Double output Shaft	39 内六角圆柱头螺钉 Hexagon socket head cap screw
10 孔输入蜗杆 PAM worm	20 箱体 Case	30 平键 Parallel key	

Product Introduction

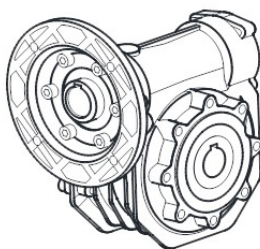
This manual applies to the following series: CYRV, CYRW, CYVF,CYWF, CYPC,Double-Stage.

The picture of the manual is for reference only, the specific to the actual object in the box shall prevail, please read the instructions selectively.

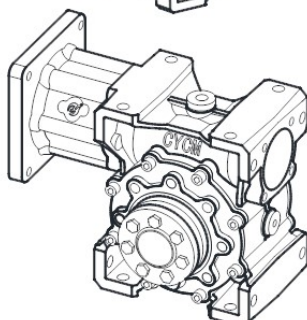
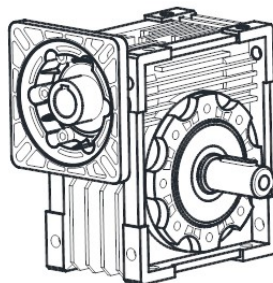
CYRW



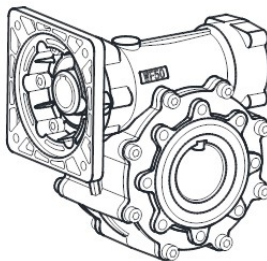
CYVF



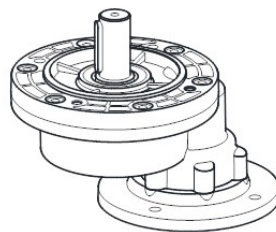
CYRV



CYCM



CYWF



CYPC

输入输出形式

1. 减速机的输入形式分为：孔输入、轴输入。
2. 输出形式分为：孔输出、单向轴输出、双向轴输出。

产品基本性能

1. CYRV、CYRW、CYVF 蜗轮蜗杆减速机箱体型号有：30、40、50、63、75、90、110，共 7 种。
2. 单机速比有 5、7.5、10、15、20、25、30、40、50、60、80、100，共 12 种，其中 30 机座无 100 速比。
3. 减速机可正、反向运转。

安装使用说明 注意

1. 可按实际要求采用多种安装形式，六个面均能安装。
2. 安装必须牢固、可靠，安装后用手转动蜗杆，必须灵活，无卡滞现象。
3. CYRV、CYRW、CYVF 减速机安装时，原动机、减速机和工作机构之间须仔细对中。
4. CYCM 减速机安装时，原动机、减速机和工作机构之间须仔细对中，误差不得大于所有联轴器的许用补偿。
5. 本厂产品出厂时，所有结合面均经密封圈或粘合剂密封防漏处理，用户自行拆装后应确保密封性能完好，以免造成漏油。

Input and Output Forms

1. The input form of worm gearbox is divided into: hole input, shaft input.
2. The output form is divided into: hole output, one-way shaft output, two-way shaft output.

Basic Product Performance

1. CYRV, CYRW, CYVF worm gear worm gearbox housing models are:30, 40,50, 63, 75, 90, 110, a total of 7 kinds.
2. There are 12 kinds of single ratios: 5, 7.5, 10, 15, 20, 25, 30, 40, 50,60, 80, 100, among which there is no 100 ratio for 30 worm gearbox .
- 3.The worm gearbox can be operated positively and negatively.

Installation and Use Instructions Note

1. A variety of installation forms can be used according to actual requirements, and all six surfaces can be installed.
2. The installation must be firm and reliable, and the worm shaft must be flexible and free from stagnation when it is rotated by hand after installation.
3. When installing CYRV, CYRW, CYVF worm gearbox , the power source, worm gearbox and working mechanism must be carefully centered.
4. When CYCM worm gearbox is installed, the power source, worm gearbox and working mechanism must be carefully centered, and the tolerance must not be more than the permissible compensation of all couplings.
5. Before leaving the factory, all the combined surfaces are sealed by sealing ring or adhesive to prevent leakage. Users should make sure that the sealing performance is in good condition after disassembling and assembling by themselves, so as to avoid oil leakage.

润滑油注意事项 注意

1. 本公司蜗轮蜗杆减速机出厂前均已加足全合成润滑油，产品免更换润滑油，润滑油出厂加注后可无限次使用。(加注矿物油的低配产品，在使用 1000 小时后需更换新油，并按使用说明要求定期添加更换。)
2. 本厂产品全密封免维护，其中 CYRV(普通款)为防止运输中漏油，已将加油孔用平油塞密闭，使用时平油塞无须松开。
3. 若更换润滑油，应符合表中要求使用，不同牌号的油禁止混用，牌号相同而粘度不同的油允许混用。
4. 润滑油加注量按附表一，推荐润滑油牌号按附表二。
5. 本说明书中的减速机可允许适用的工作环境温度为 $-20^{\circ}\text{C} \sim +40^{\circ}\text{C}$ 。当环境温度低于 0°C 时，起动前润滑油必须加热到 0°C 以上或采用低凝固点的润滑油。

减速机型号 worm gearbox Model	30	40	50	63	75	90	110
注油量(ml) Lubricant Filling Quantity	40	80	150	300	550	1000	1600

附表一：润滑油加注量 / Schedule I: Lubricant Filling Quantities

Lubricant Precautions Note

1. Our worm gear reducers have been fully filled with synthetic lubricant before leaving the factory, and the products are free of lubricant replacement, and the lubricant can be used for unlimited times after being filled from the factory. (Mineral oil filled with low-end products, after using 1000 hours need to replace the new oil, and according to the requirements of the manual for regular addition and replacement.)
2. Our products are fully sealed and maintenance-free, of which CYRV (ordinary models) to prevent oil leakage during transportation, the oil filling holes have been sealed with flat oil plugs, which do not need to be loosened when in use.
3. If the lubricant is replaced, it should be used in accordance with the requirements in the table. Different types of oils are prohibited from being mixed, and oils with the same type but different viscosities are allowed to be mixed.
4. Lubricant filling quantity is according to the attached table, and the recommended lubricant type is according to the attached table.
5. The worm gearbox in this manual can be allowed to apply to the working environment temperature is $-20^{\circ}\text{C} \sim +40^{\circ}\text{C}$. When the environment temperature is lower than 0°C , the lubricant must be heated to above 0°C before starting or the lubricant with low freezing point should be used.

蜗轮蜗杆分度圆滑动速度 (m/s)	蜗轮蜗杆油牌号	
≤ 2	AGIP ENI BLASIA	SX 320
$> 2.5 \sim 5$	TOTAL CARTER	SY 320
$> 5 \sim 12$	MOBILGEAR	MS 320

附表二：推荐润滑油牌号

安装注意事项



注意

1. 不得重力锤击减速机外壳，以免损坏。
2. 定期检修安装基础、密封件、传动轴等是否正确，经常保持表面清洁以利于散热。
3. 正常使用时，润滑油的最高温度应小于 115°C 。特殊环境下润滑油使用温度长期接近 180°C 时，建议选择氟橡胶密封圈。
4. 油温温升变化异常，产生不正常噪声等现象时，应立即停机检查，排除故障后，方可继续使用。
5. 更换新的配件必须经跑合负载试验后再正式使用。

提示：本公司不建议超负载运行，可能会导致无法正常工作。

Worm Gear Indexing Circle Sliding Speed (m/s)	Worm Gear Lubricant Type	
≤ 2	AGIP ENI BLASIA	SX 320
$> 2.5 \sim 5$	TOTAL CARTER	SY 320
$> 5 \sim 12$	MOBILGEAR	MS 320

Schedule II: Recommended Lubricant Types

Installation Precautions Note

1. Do not hammer the worm gearbox housing heavily to avoid damage.
2. Regularly inspect the installation base, seals, drive shafts, etc. to see if they are correct, and often keep the surface clean to facilitate heat dissipation.
3. The maximum temperature of lubricant should be less than 115°C during normal use.

Special environment lubricant use temperature

for a long time close to 180°C, it is recommended to choose fluorine rubber seals.

4. Abnormal change in lubricant temperature rise produced abnormal noise and other phenomena, should be immediately shut down for inspection and troubleshooting before continuing to use.
5. Replacement of new parts must be run with the load test before formal use.

Tip: We do not recommend running overload, it may not work properly.

产品参数

CYRV、CYRW、CYVF、CYWF、CYPC系列减速机的设计参数详见本公司样本册。

服务指南

经以下处理后，减速机如还不能正常工作，请与客户服务中心联系。

故障现象	可能造成原因	处理方法
输入装置运转时输出轴不运转	动力输入/输出轴键连接破坏	联系厂家修理
	轴键未安装	安装轴键
	动力输入端联轴器箍紧螺丝松动	重新安装箍紧联轴器
减速机异常发热与噪音	超负荷运转	减少负荷
振动过大	固定不良，螺丝松动	重新锁紧
动力输入装置无法与减速机连接安装	动力输入轴、止口、螺距有偏差	更换动力输入装置
	动力输入装置与减速机非平衡状态安装	动力输入装置保持平衡安装

Product Parameters

The design parameters of CYRV, CYRW , CYVF,CYWF and CYPC series worm gearbox are detailed in our catalogue.

Service Guide

If the worm gearbox does not work properly after the following treatment, please contact the customer service center.

Malfunctions	Possible Reasons	Method
Output shaft does not run when input device is running	Power input/output shaft key connection destruction	Contact the manufacturer for repairs
	Shaft key not installed	Install shaft key
	Power input coupling clamping screws loose	Reinstall the hooped coupling
Abnormal heat and noise of the worm gearox	Overloaded operation	Reduce the load
Excessive vibration	Poor fixing, screws loose	Relock
The power input unit cannot be installed in connection with the worm gearbox	Deviation of power input shaft, stop, pitch	Replace the power input unit
	Unbalanced installation of the power input unit and worm gearbox	Balanced mounting of the power input unit

声明

本产品执行标准：GB/T10085-2018、JB/ZQ4390-86随着产品的技术革新与改进，与本产品相同型号的产品说明书内容可能会有所更改，更新部分恕不另外通知。本说明书中展示的所有图例均以标准型号减速机的外观为基础，仅用作示例说明用途，实际外观请以所购买的产品为准。由于产品改良部分参数可能有所更改，更改后的参数对本产品无溯及力，请以本产品铭牌参数为准。本说明书内容如有变动，恕不另行逐一通知，原则上变动内容对本产品无溯及力。本说明书相关条款解释权归属陈跃（江苏）技术有限公司。

在购买本公司产品后请立即扫描二维码，使用本公司电子样本册。



Statement

The product implementation standards: GB/T10085-2018、JB/ZQ4390-86 With the product's technological innovation and improvement, with the product of the same model of the product manual content may be changed, the updated part without additional notice. All drawings shown in this manual are based on the appearance of the standard model worm gearbox , and are only used as an example for demonstration purposes, please refer to the actual appearance of the purchased product. Due to product improvement some parameters may be changed, the changed parameters have no retroactive effect on this product, please refer to the nameplate parameters of this product. If the content of this manual is changed, we will not notify you individually, and in principle, the changes have no retroactive effect on this product. The right to interpret the terms and conditions of this manual belongs to Chenyue (Jiangsu) Technology Co., Ltd.

Please scan the QR code immediately after purchasing our products to use our electronic catalogue.



公司其他产品及组合产品：

CYWF 大孔径蜗轮蜗杆减速机



CYWF 设计特点：

该系列减速机采用“圆箱形”结构、大孔径输出设计。蜗轮采用优质锡青铜，内置全合成润滑油，全密封免维护，结构紧凑。安装形式多样便捷，满足客户对大孔径减速机应用需求。

输入输出形式

输入形式分为：孔输入、轴输入。

输出形式为：孔输出、单向轴输出、双向轴输出。

产品基本性能

CYWF 蜗轮蜗杆减速机箱体型号有：50、90、110，共 3 种。

单机速比有 5、7.5、10、15、20、25、30、40、50、60、80、100，共 12 种。

减速机可正、反向运转。

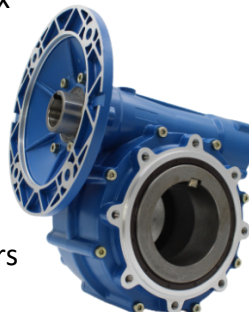
该系列减速机的润滑油：CYWF 系列减速机采用 320# 全合成润滑油。

The company's other products and combinations of products:

CYWF Large Bore Worm Gearbox

CYWF Design Features:

This series of worm gearbox adopts "round box" structure and large bore output design. The worm wheel is made of high quality tin-bronze, built-in synthetic lubricant, fully sealed and maintenance-free, with compact structure. There are various and convenient installation forms to meet the needs of customers for large bore worm gearbox applications.



Input and output forms

The input form is divided into: hole input, shaft input.

The output form is: hole output, one-way shaft output, two-way shaft output.

Basic Product Performance

CYWF worm gear worm gearbox box models are: 50, 90, 110, a total of 3 kinds.

The single ratio has 5, 7.5, 10, 15, 20, 25, 30, 40, 50, 60, 80, 100, total 12 kinds.

The worm gearbox can be operated positively and negatively.
Lubricant of this series worm gearbox : CYWF series worm gearbox adopts 320# full synthetic lubricant.

PC 系列齿轮减速机



CYPC 的设计特点:

该系列减速机是单级齿轮减速装置，能与普通电机、伺服电机直接连接使用。同 RV (RW、VF、WF) 组合，速比范围更大，传动效率更高、应用范围更广。

输入输出形式

输入形式分为：孔输入、轴输入。

输出形式为：单向轴输出。

产品基本性能

CYPC 齿轮减速机箱体型号有：51、60、63、71、80 共 5 种。

单机速比有 2、2.5、3、3.5、4、4.5、5，共 7 种，其中 63、71、80 机座只有 3、5 速比，减速机可正、反向运转。

PC 系列减速机的润滑油：CYPC 系列减速机采用 320#全合成润滑油。

PC Series Gearbox



CYPC Design Features:

This series gearbox is a single-stage gear reduction device, which can be directly connected with ordinary motors and servo motors.

Combined with RV (RW, VF, WF), the ratio range will be larger, the transmission efficiency will be higher, and the application range will be wider.

Input and output forms

The input form is divided into: hole input, shaft input.

The output form is: one-way shaft output.

Basic Product Performance

CYPC gear gearbox housing models are: 51, 60, 63, 71, 80, a total of 5 kinds.

The single ratio has 2, 2.5, 3, 3.5, 4, 4.5, 5, a total of 7 kinds, of which 63, 71, 80 reducers only have 3 and 5 ratios. The gearbox can be operated positively and negatively.

Lubricant of PC series gearbox : CYPC series gearbox adopts 320 # full synthetic lubricant.

双级减速机



双级减速机的设计特点：

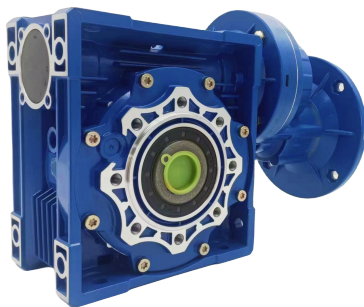
双级减速机又称之为双段蜗轮蜗杆减速机、双级蜗轮蜗杆减速机，它与单级减速机相比就是多了一个传动装置。具有应用范围广、耐用、传动比大、自锁能力强、结构简单。因为减速机又分为单级与双级两种，因此速比就会不相同。

输入输出形式

输入形式分为：孔输入、轴输入。

输出形式为：

孔输出、单向轴输出、双向轴输出。



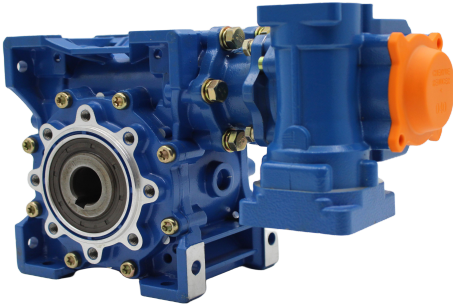
产品基本性能

双级减速机可任意搭配，最大速比可达1：10000。

单级速比众多，减速机可正、反向运转。

减速机的润滑油：所有减速机皆采用320#全合成润滑油。

Double-stage worm gearbox



Input and output forms

The input form is divided into: hole input, shaft input.
The output form is divided into: hole output, one-way shaft output, two-way shaft output.

Product basic performance

Double-stage worm gearbox can be matched arbitrarily, and the maximum ratio can be up to 1:10,000. There are many single-stage ratios, and the worm gearbox can be operated positively and negatively.
worm Gearbox lubricant: All gearboxes use 320# fully synthetic lubricant.

Design features of Double-stage worm gearbox:

Double-stage worm gearbox is also called double-section worm gearbox, double-stage worm gearbox, which is one more transmission device compared with single-stage worm gearbox. It has a wide range of applications, durability, large transmission ratio, strong self-locking ability and simple structure. Because the worm gearbox is divided into single-stage and double-stage two kinds, so the ratio will not be the same.



本使用说明书可能含消费者个人信息，请妥善保管。

售后服务说明

感谢您使用我公司产品，我公司将按照《中华人民共和国消费者权益保护法》的有关规定为您提供优质服务，产品如有故障，请与购买的经销商或本公司客户咨询服务中心联系。

- 1) 减速机整机保修一年；
- 2) 保修期的起始日期以产品发票日期为准，维修时请出示发票。

属下列情况之一的，不属于免费保修范围，我公司可向您提供产品有偿收费服务：

1. 消费者因使用、维护、保管不当造成损坏的；
2. 未按本使用说明书规范拆动造成损坏的；
3. 因不可抗力造成损坏的。

提示：超过保修期或不属于免费保修范围内的产品，本公司维修中心仍竭诚为您服务。

感谢您选购本公司产品

使用和维护产品前，请仔细阅读本使用说明书。

不遵照本说明书进行操作有可能导致受伤或财产损失。

请妥善保管好此说明书以备日后参考。

附产品质量检验合格证

This instruction manual may contain personal information of consumers, please keep it in a safe place.

After-sales service

Thank you for using our products, our company will provide you with quality service in accordance with the relevant provisions of the "Law of the People's Republic of China on the Protection of Consumer Rights and Interests", product failure, please contact with the purchased distributor or the company's customer service center for consultation.

- (1) The whole worm gearbox is warranted for one year;
- (2) The starting date of the warranty period is subject to the date of the product invoice, please present the invoice when repairing.

Belong to one of the following situations, does not belong to the scope of the free warranty, our company can provide you with products paid fee service:

1. Damage caused by improper use, maintenance and storage by consumers;
2. Damage caused by disassembly not regulated by this instruction manual;
3. Damage caused by force majeure.

Tip: beyond the warranty period or does not belong to the free warranty products, the company's maintenance center is still dedicated to serve you.

Thank you for purchasing our products!

Please read these instructions carefully before using and maintaining the product.

Failure to follow these instructions may result in injury or property damage.

Please keep this manual in a safe place for future reference.

With product quality inspection certificate