



联动驰而不息 合作共赢未来

Linkage and galloping without rest, Cooperation for a Win-Win Future

陈跃（江苏）技术有限公司

Chenyue (Jiangsu) Technology Co., Ltd.

地址：中国江苏省沭阳县金浪路10号

Add: No. 10 Jinlang Road, Shuyang County, Jiangsu Province, China

Web: www.chinachenyue.com

Email: export@chinachenyue.com

Service: +86 400 019 2928



江苏凹凸慢机电科技有限公司

Jiangsu Automan Electromechanical Technology Co., Ltd.

地址：中国江苏省沭阳县金浪路5号

Add: No. 5 Jinlang Road, Shuyang County, Jiangsu Province, China

Web: www.cyautoman.com

Email: export@cyautoman.com

Service: +86 400 687 6698





CHENYUE®

TECHNOLOGY CO.,LTD.

www.chinachenyue.com

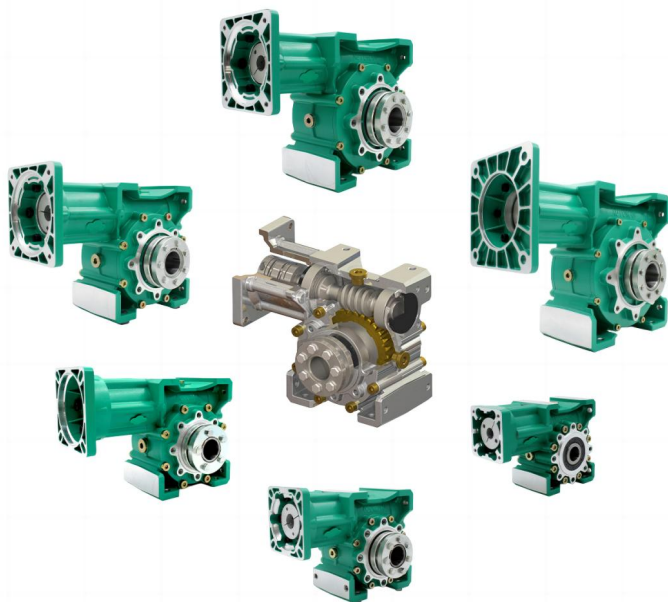
SINCE 1993

WE MAKE YOUR BUSINESS DRIVE

CYCM超精密蜗轮蜗杆减速机

CYCM High Precision Worm Gearbox

使用说明书
Instruction Manual



重复精度 0.5~2弧分

REPEATABILITY 0.5~2ARCMIN

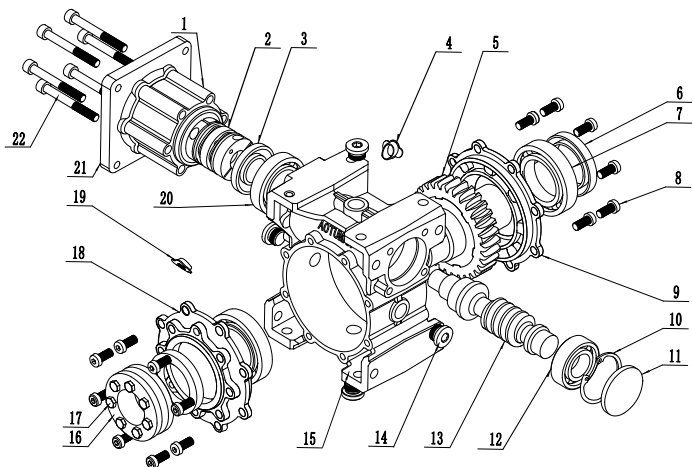
安装使用前，务请详细阅读说明书！

Before installation and use, be sure to read the instructions in detail!!

产品简介

本说明书适用产品：CYCM。

说明书图片仅供参考，具体以包装箱内实物为准，请选择性阅读说明。



项目号	零件名称	数量	项目号	零件名称	数量
1	联轴器法兰	1	12	角接触滚动球轴承	1
2	联轴器	2	13	蜗杆	1
3	法兰油封	1	14	油塞	1
4	联轴器法兰堵盖	2	15	箱体	2
5	蜗轮	1	16	锁紧盘	1
6	蜗轮油封	2	17	外六角螺钉	1
7	角接触滚动球轴承	2	18	箱体端盖-前	1
8	圆柱头内六角螺钉 M8X12	16	19	联轴器堵盖	2
9	箱体端盖-后	1	20	角接触滚动球轴承	1
10	卡簧	1	21	输入法兰	2
11	箱体闷盖	1	22	圆柱头内六角螺钉 M8X70	6

Product Introduction

This manual applies to the following series: CYCM.

The picture of the manual is for reference only, the specific to the actual object in the box shall prevail, please read the instructions selectively.

ItemNo.	Part Name	Quantity	ItemNo.	Part Name	Quantity
1	Coupling flange	1	12	Angular contact rolling ball bearings	1
2	Coupling	2	13	Worm shaft	1
3	Flange oil seal	1	14	Oil plug	1
4	Coupling flange cover	2	15	Housing	2
5	Worm wheel	1	16	Locking disc	1
6	Worm wheel oil seal	2	17	Outer hexagon socket head cap screws	1
7	Rolling ball bearings	2	18	Box end cap - front	1
8	Inner hexagon socket head cap screws M8X12	16	19	Coupling cover	2
9	Box end cap - rear	1	20	Angular contact rolling ball bearings	1
10	Coax	1	21	Input flange	2
11	Box cover	1	22	Inner hexagon socket head cap screws M8X70	6

输入输出形式

1. 减速机的输入形式分为：联轴器连接输入，孔输入。
2. 输出形式分为：单锁紧盘、双锁紧盘孔输出、孔输出、单向轴输出、双向轴输出及带蜗杆尾出轴输出。

产品基本性能

1. CYCM 系列减速机采用联轴器连接输入、采用胀紧套输出，可靠低间隙，精度可达 0.5~2 弧分。
2. CYCM 蜗轮蜗杆减速机箱体型号有：40、50、63、75、90、110，共 6 种。
3. 单机速比有 5、7.5、10、15、20、25、30、40、50、60、80 共 11 种。
4. CYCM 系列减速机精度高、体积小、重量轻，可正、反向运转。

安装使用说明



注意

1. 可按实际要求采用多种安装形式，六个面均能安装。
2. 安装必须牢固、可靠，安装后用手转动蜗杆，必须灵活，无卡滞现象。
3. 减速机安装时，减速机的主动轴线与被动轴线必须与相连接部分的轴线同心，其误差不得大于联轴器的许用补偿。
4. 本厂产品出厂时，所有接合面均经密封圈或粘合剂密封防漏处理，用户自行拆装后应确保密封性能完好，以免造成漏油。

Input and Output Forms

1. The input form of worm gearbox is divided into: coupling connection input, hole input.
2. The output form is divided into: single locking disc, double locking disc hole output, single shaft output, double shaft output and worm tailed shaft output

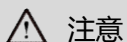
Basic Product Performance

1. CYCM series gearboxes adopt coupling connection input and expansion sleeve output with reliable low backlash and their accuracy can reach $0.5 \sim 2$ Arcmin.
2. CYCM worm gearbox housing models are: 40, 50, 63, 75, 90, 110, a total of 6 kinds.
3. There are 11 kinds of ratios for single stage gearbox: 5, 7.5, 10, 15, 20, 25, 30, 40, 50, 60, 80.
4. CMCM series gearboxes with high precision, small volume, light weight, and can be operated forward and reverse.

Installation and Use Instructions Note

1. A variety of installation forms can be used according to the actual requirements, and all six surfaces can be installed.
2. The installation must be firm and reliable, and the worm shaft must be flexible and free from stagnation when it is rotated by hand after installation.
3. When CYCM reducer is installed, the power source, worm gearbox and working mechanism must be carefully centered and the tolerance must not be more than the permissible compensation of all couplings.
4. Before leaving the factory, all the combined surfaces are sealed by sealing ring or adhesive to prevent leakage. Users should make sure that the sealing performance is in good condition after disassembling and assembling by themselves, so as to avoid oil leakage.

润滑油注意事项



1. 本公司蜗轮蜗杆减速机出厂前均已加足全合成润滑油，产品免更换润滑油，润滑油出厂加注后可无限次使用。
2. 本厂产品全密封免维护，已将加油孔用平油塞密闭，使用时平油塞无须松开。
3. 若更换润滑油，应符合表中要求使用，不同牌号的油禁止混用，牌号相同而粘度不同的油允许混用。
4. 润滑油加注量按附表一，推荐润滑油牌号按附表二。
5. 本说明书中的减速机可允许适用的工作环境温度为 $-20^{\circ}\text{C} \sim +40^{\circ}\text{C}$ 。当环境温度低于 0°C 时，起动前润滑油必须加热到 0°C 以上或采用低凝固点的润滑油。

减速机型号 worm gearbox Model	40	50	63	75	90	110
注油量(ml) Lubricant Filling Quantity	80	150	300	550	1000	1600

附表一：润滑油加注量

Schedule I : Lubricant Filling Quantities

Lubricant Precautions Note

1. Our worm gearboxes have been fully filled with synthetic lubricant before leaving the factory, and the products are free of lubricant replacement, and the lubricant can be used for unlimited times after being filled from the factory.
2. Our products are fully sealed and maintenance-free which prevent oil leakage during transportation, the oil filling holes have been sealed with flat oil plugs, which do not need to be loosened when in use.
3. If the lubricant is replaced, it should be used in accordance with the requirements in the table. Different types of oils are prohibited from being mixed, and oils with the same type but different viscosities are allowed to be mixed.
4. Lubricant filling quantity is according to the attached Schedule 1, and the recommended lubricant type is according to the attached Schedule.
5. The permissible applicable operating ambient temperature of the gearboxes in this specification is -20°C to $+40^{\circ}\text{C}$. When the environment temperature is lower than 0°C the lubricant must be heated to above 0°C before starting or the lubricant with low freezing point should be used.

蜗轮蜗杆分度圆滑动速度 (m/s)	蜗轮蜗杆油牌号	
≤ 2	AGIP ENI BLASIA	SX 320
$> 2.5 \sim 5$	TOTAL CARTER	SY 320
$> 5 \sim 12$	MOBILGEAR	MS 320

附表二：推荐润滑油牌号

安装注意事项



注意

1. 不得重力锤击减速机外壳，以免损坏。
2. 定期检修安装基础、密封件、传动轴等是否正确，经常保持表面清洁以利于散热。
3. 正常使用时，润滑油的最高温度应小于 115°C 。特殊环境下润滑油使用温度长期接近 180°C 时，建议选择氟橡胶密封圈。
4. 油温温升变化异常，产生不正常噪声等现象时，应立即停机检查，排除故障后，方可继续使用。
5. 更换新的配件必须经跑合负载试验后再正式使用。

提示：本公司不建议超负载运行，可能会导致无法正常工作。

Worm Gear Indexing Circle Sliding Speed (m/s)	Worm Gear Lubricant Type	
≤ 2	AGIP ENI BLASIA	SX 320
$> 2.5 \sim 5$	TOTAL CARTER	SY 320
$> 5 \sim 12$	MOBILGEAR	MS 320

Schedule II: Recommended Lubricant Types

Installation Precautions Note

1. Do not hammer the worm gearbox shell heavily to avoid damage.
2. Regularly inspect the installation base, seals, drive shafts, etc to see if they are correct and often keep the surface clean to facilitate heat dissipation.
3. In normal use, the maximum temperature of the lubricating oil should be lower than 115°C. When the lubricating oil is used in a special environment for a long time at a temperature close to 180 °C, it is recommended to use fluoro rubber seals.
4. When the oil temperature changes abnormally and produces abnormal sound, it should be stopped immediately for inspection, and can be continued to use after troubleshooting.
5. The replacement of new parts must be subjected to running load test before formal use.

Tip: We don't recommend running overload, it may not work properly.

产品参数

减速机的设计参数详见本公司样本册。

服务指南

经以下处理后，减速机如还不能正常工作，请与客户服务中心联系。

故障现象	可能造成原因	处理方法
输入装置运转时输出轴不运转	动力输入联轴器法兰损坏	联系厂家修理
	动力输出胀紧套连接损坏	联系厂家修理
	动力输入端联轴器箍紧螺丝松动	重新安装箍紧联轴器
减速机异常发热与噪音	超负荷运转	减少负荷
振动过大	固定不良，螺丝松动	重新锁紧
动力输入装置无法与减速机连接安装	动力输入轴、止口、螺距有偏差	更换动力输入装置
	动力输入装置与减速机非平衡状态安装	动力输入装置保持平衡安装

Product Parameters

The design parameters of the worm gearbox are detailed in our catalogue.

Service Guide

After the following treatment, if the worm gearbox does not work properly, please contact the customer service center.

Malfunctions	Possible Reasons	Treatments
Output shaft does not run when input device is running	Power coupling input flange damaged	Contact the manufacturer for repairs
	Power output connection expansion sleeve	Contact the manufacturer for repairs
	Power input coupling clamping screws loose	Reinstall the hooped coupling
Abnormal heat and noise of the worm gearbox	Overloaded operation	Reduce the load
Excessive vibration	Poor fixing, screws loose	Relock
The power input unit cannot be installed in connection with the worm gearbox	Deviation of power input shaft, stop, pitch	Replace the power input unit
	Unbalanced installation of the power input unit and worm gearbox	Balanced mounting of the power input unit

声明

本产品执行标准：GB/T10085-2018、JB/ZQ4390-86随着产品的技术革新与改进，与本产品相同型号的产品说明书内容可能会有所更改，更新部分恕不另外通知。本说明书中展示的所有图例均以标准型号减速机的外观为基础，仅用作示例说明用途，实际外观请以所购买的产品为准。由于产品改良部分参数可能有所更改，更改后的参数对本产品无溯及力，请以本产品铭牌参数为准。本说明书内容如有变动，恕不另行逐一通知，原则上变动内容对本产品无溯及力。本说明书相关条款解释权归属陈跃（江苏）技术有限公司。

在购买本公司产品后请立即扫描二维码，使用本公司电子样本册。



Statement

The product implementation standards: GB/T10085-2018、JB/ZQ4390-86 With the product's technological innovation and improvement, with the product of the same model of the product manual content may be changed, the updated part without additional notice. All drawings shown in this manual are based on the appearance of the standard model worm gearbox , and are only used as an example for demonstration purposes, please refer to the actual appearance of the purchased product. Due to product improvement some parameters may be changed, the changed parameters have no retroactive effect on this product, please refer to the nameplate parameters of this product. If the content of this manual is changed, we will not notify you individually, and in principle, the changes have no retroactive effect on this product. The right to interpret the terms and conditions of this manual belongs to Chenyue (Jiangsu) Technology Co., Ltd.

Please scan the QR code immediately after purchasing our products to use our electronic catalogue.



本使用说明书可能含消费者个人信息，请妥善保管。

售后服务说明

感谢您使用我公司产品，我公司将按照《中华人民共和国消费者权益保护法》的有关规定为您提供优质服务，产品如有故障，请与购买的经销商或本公司客户咨询服务中心联系。

- 1) 减速机整机保修一年；
- 2) 保修期的起始日期以产品发票日期为准，维修时请出示发票。

属下列情况之一的，不属于免费保修范围，我公司可向您提供产品有偿收费服务：

1. 消费者因使用、维护、保管不当造成损坏的；
2. 未按本使用说明书规范拆动造成损坏的；
3. 因不可抗力造成损坏的。

提示：超过保修期或不属于免费保修范围内的产品，本公司维修中心仍竭诚为您服务。

感谢您选购本公司产品

使用和维护产品前，请仔细阅读本使用说明书。

不遵照本说明书进行操作有可能导致受伤或财产损失。

请妥善保管好此说明书以备日后参考。

附产品质量检验合格证

This instruction manual may contain personal information of consumers, please keep it in a safe place.

After-sales service

Thank you for using our products, our company will provide you with quality service in accordance with the relevant provisions of the "Law of the People's Republic of China on the Protection of Consumer Rights and Interests", product failure, please contact with the purchased distributor or the company's customer service center for consultation.

- (1) The whole worm gearbox is warranted for one year;
- (2) The starting date of the warranty period is subject to the date of the product invoice, please present the invoice when repairing.

Belong to one of the following situations, does not belong to the scope of the free warranty, our company can provide you with products paid fee service:

1. Damage caused by improper use, maintenance and storage by consumers;
2. Damage caused by disassembly not regulated by this instruction manual;
3. Damage caused by force majeure.

Tip: beyond the warranty period or does not belong to the free warranty products, the company's maintenance center is still dedicated to serve you.

Thank you for purchasing our products!

Please read these instructions carefully before using and maintaining the product.

Failure to follow these instructions may result in injury or property damage.

Please keep this manual in a safe place for future reference.

With product quality inspection certificate