

BD



Handicraft Introduction

Shanghai Buding International Trading Co., Ltd

The charm of intangible cultural heritage, the soul of culture.

As a traditional Chinese metal handicraft, the gold and silver craftsmanship is made of gold and silver as the main materials. It is used for indoor decoration and appreciation and has practical functions. Because of the excellent ductility of the material, it can be as thin as a cicada's wing and as fine as a hair, so the techniques used are very complicated and delicate, including hammering, disc, engraving, hollowing, filigree, inlay, blasting beads, gilding and dozens of other techniques.



The craftsmanship of gold and silver wares has a long history. According to archaeological discoveries, gold was used as jewelry as early as the Shang Dynasty more than 3,000 years ago; by the Tang Dynasty, the development of gold and silver wares reached its peak, with mature production techniques, exquisite patterns, and a wide variety of varieties. In the Ming and Qing Dynasties, the production technology was more perfect, elegant, and exquisite. In the process of development, gold and silver wares indirectly reflect the changes in culture and the times, the appearance and needs of society, and their themes, patterns, and shapes reflect the aesthetic tastes and life aspirations of the times.



Carrying history and witnessing ingenuity. Intangible cultural heritage crafts have been passed down for thousands of years and have condensed the skills and wisdom of countless craftsmen. It is not only a window for us to understand the past, but also a solid foundation for us to move towards the future. Let us respect tradition, strive for excellence, and pass on a cultural treasure for the future.

Filigree cage

Length: 15.2 cm Width: 11 cm Height: 19.5 cm

A container for round or square tea cakes is usually hung in a cool and ventilated place to keep them dry. When the tea cakes are damp, the tea cage can also be used for roasting. The silver cage with gold and silver threads consists of four parts: the upper cover, the handle, the cage body, and the feet, all woven with gold and silver threads.

**Flying geese ball pattern cage**

Diameter: 15.2 cm Height: 18.5 cm

This vessel is used to hold tea. It has a straight mouth, deep belly, flat bottom, handle, and lid. The lid is domed, and the rim is folded down to fit the cage. The lid and body are hollowed out, and the decoration is gilded. There are riveted ring ears under the rim on both sides, and the ear seats are made of small round flowers with four petals. A handle is placed on the ring ears, and a silver chain is placed on the handle to connect to the lid button. The foot is a combination of three flowers and is riveted to the edge of the cage bottom.





Tea trough with wild goose pattern
Length: 28 cm Width: 5.6 cm Height: 6.2 cm

This vessel is used to grind tea cakes into powder. A poem describes grinding tea as: "Glazing jade and jade stones are pressed together, the fragrance is nothing more than that, ground into golden powder, light and tender like pine flowers."



Tea sieve with flying crane pattern
Length: 16 cm Width: 11 cm Height: 10.8 cm

The tea sieve is a rectangular block, consisting of a lid, sieve, drawer, sieve frame, and base. It is used to sift the ground tea.



Figure painting Xiang Baozi

Diameter: 14 cm Height: 25 cm

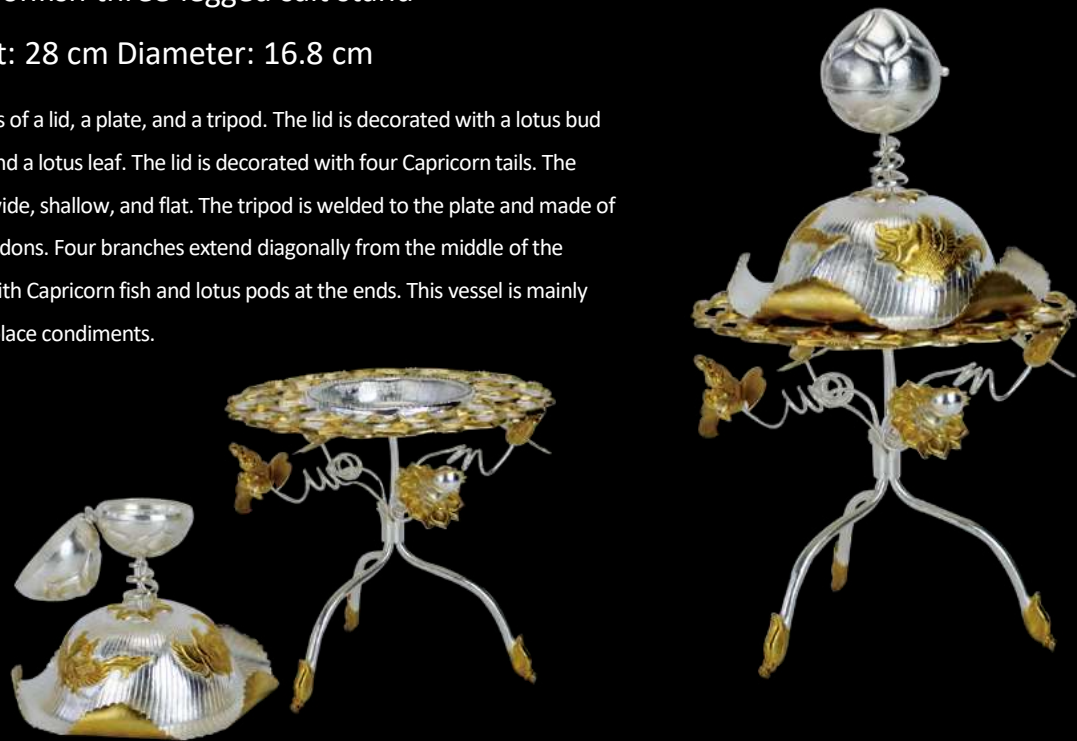
With a lid, straight mouth, deep belly, flat bottom, and ring foot, and the lid button is in the shape of a jewel. The lid is raised and divided into four petals. Each petal is engraved with a lucky beast, and the bottom is lined with winding branches and vines. The lid and the body are buckled together with a mother-and-child joint, and the belly wall is divided into four standard pot doors, and the pot doors are engraved with figures such as Guo Ju burying his son, Wang Xiang lying on ice, immortals playing chess, and Yan Hui asking for directions. Below is a trumpet-shaped ring foot base.



Scorpionfish three-legged salt stand

Height: 28 cm Diameter: 16.8 cm

It consists of a lid, a plate, and a tripod. The lid is decorated with a lotus bud handle and a lotus leaf. The lid is decorated with four Capricorn tails. The plate is wide, shallow, and flat. The tripod is welded to the plate and made of silver tendons. Four branches extend diagonally from the middle of the frame, with Capricorn fish and lotus pods at the ends. This vessel is mainly used to place condiments.



Silver incense burner with high ring foot

Height: 56 cm Diameter: 34.6 cm

The whole body is plain, consisting of a lid and a body. The edge of the lid is a three-layered prism. The lid surface is hemispherical, the upper half is hollowed out, and two layers of lotus petals are punched. The top of the lid is a cone-shaped lotus bud. The body of the furnace has a narrow mouth, a deep belly, a flat bottom, and a ring foot.



Incense Treasure with Musical Instruments

Height: 12 cm Bottom diameter: 6.8 cm

With lid, straight mouth, deep belly, flat bottom, ring foot. The lid has a vertical edge, with continuous vine patterns on the edge, and the belly wall is inward curved, with three musicians playing and dancing carved on the belly wall, and vine patterns as the background. The bottom is a trumpet-shaped ring foot. It is mainly used for mixing tea.



Turtle box

Length: 30 cm Width: 15.6 cm Height: 14 cm

The box is in the shape of a tortoise, with its head raised, tail bent, four legs retracted, and its shell as a lid. It is mainly used to store tea leaves, etc.



Silver plate with floral pattern

Diameter: 11.5 cm Height: 2 cm



Gilded silver soup bowl with lotus curling ring foot

Top bowl diameter: 8.8 cm Bottom diameter: 10.5 cm Height: 11 cm



Small silver salt stand with a pansi base and sunflower-shaped surface



Long-handled spoon with curling grass pattern

Length: 39 cm

It is a tool used to beat the boiling water when boiling tea. It is hammered into shape and decorated with gilded patterns. The handle is engraved with three sections of creeping grass patterns from top to bottom, with raised lotus buds as boundaries.



Silver Chain Fire Chopsticks

Length: 18.5 cm

It is a fire chopstick used to hold the charcoal in the blast furnace when boiling tea. It is hammered into shape, thick at the top thin at the bottom, and smooth throughout.



Plain silver incense spoon

Length: 18.2 cm



Silver spoon with flying hawk pattern

Length: 20.5 cm

It is a measuring tool used to put tea powder when brewing tea. The spoon surface is oval, the handle is flat and long, wide at the top and narrow at the bottom, the end of the handle is triangular, and the upper and lower parts are engraved.



Blued sterling silver side handle pot





Boshan furnace
Height: 27 cm Diameter of chassis: 22 cm



Incense burner with auspicious elephant and lotus pattern
Body diameter: 15.5 cm Height: 24.5 cm
Base diameter: 17.3 cm



Immortal Guiding Incense Burner
Length: 38 cm Width: 23.8 cm Chain
Height: 16 cm length: 40 cm



Crane Incense Burner
Length: 21 cm Width: 35 cm
Height: 6.8 cm
Chain length: 46 cm

Three-layer five-legged elephant leg incense burner

Height: 21.5 cm Diameter: 13 cm



Lotus petal Ruyi hand warmer

Length: 30.8 cm Width: 7.3 cm Height: 11.5 cm



Provided instruments for the incense ceremony performance at the Beijing Summit of the Forum on China-Africa Cooperation



Silver sachet with gilded bird pattern
Diameter: 58cm



Gilded double bee pattern hollow sachet
Diameter: 12.8 cm Chain length: 23 cm



Ruyi long handle silver hand warmer
Length: 44 cm Height: 8.6 cm



Honeysuckle knot five-foot silver incense burner
Height: 22cm Diameter: 13cm



Blue filigree incense tube



Gunchi bottle

Height: 28.5 cm Belly diameter: 10.5 cm



Gilded Capricorn Triple Pestle Patterned
Avalokitesvara Bottle

Height: 21.3 cm Diameter: 8 cm

Belly diameter: 13.5 cm

Bottom diameter: 10.4 cm



Stupa

Base length: 22.5cm

Width: 22.5cm

Height: 64cm



Flower vase

Height: 29.5cm

Upper Width: 14cm

Bottom Width: 11cm

Five Offerings before the Buddha



Candlestick

Height: 33 cm Upper width: 5.5 cm

Middle width: 12 cm Lower width: 11 cm

Incense burner

Length: 20.5 cm Width: 16 cm Height: 27 cm





Crane flower vase
Height: 27 cm Diameter: 13.8 cm Bottom diameter: 5.2 cm



Dragon and Phoenix Patterned Celestial Globe Vase
Height: 19.8 cm Diameter: 4.1 cm Diameter of bottle body: 13 cm



Plum vase
Height: 16 cm
Bottom diameter: 5.2 cm
Upper diameter: 10.8 cm



Sakyamuni Buddha
Total height: 35.8 cm Base: 21.3x18.3 cm Body height: 14.5 cm



Samantabhadra

Total height: 35.8cm
Height of Buddha: 14.5cm
Base: 21.3 x 18.3cm



Manjushri Bodhisattva

Total height: 35.8cm
Height of Buddha: 14.5cm
Base: 21.3 x 18.3cm



Silver staff with twelve rings and silver and gold flowers for welcoming the true body
Height: 196 cm





Golden Jade Marriage Filigree Blue Lock
Length: 12 cm Width: 10 cm Thickness: 0.8 cm



Square lock
Length: 12.5 Width: 9.3 cm Thickness: 1.1 cm



Baijiabao lock
Length: 6.5 cm Width: 2.1 cm Height: 3.5 cm



Pentaphyllum
Length: 11.8 cm Width: 9.5 cm Thickness: 1 cm





The adopted son wins over his father

Length: 12 cm Width: 9 cm Thickness 1.7 cm



Good fortune is in sight

Length: 6.2 cm Width: 4.3 cm Thickness 0.7 cm



Long life and wealth

Length: 11.3 cm Width: 10.3 cm Thickness: 1.2 cm



Lotus Lock

Grapevine pattern gold-inlaid jade wine pot
Length: 21 cm Width: 6 cm Height: 25 cm
Cup: Diameter: 8 cm Height: 6.2 cm



Hexagonal wine flask with human figures
Height: 29.5 cm Width: 13.8 cm
Bottom diameter: 8.2 cm

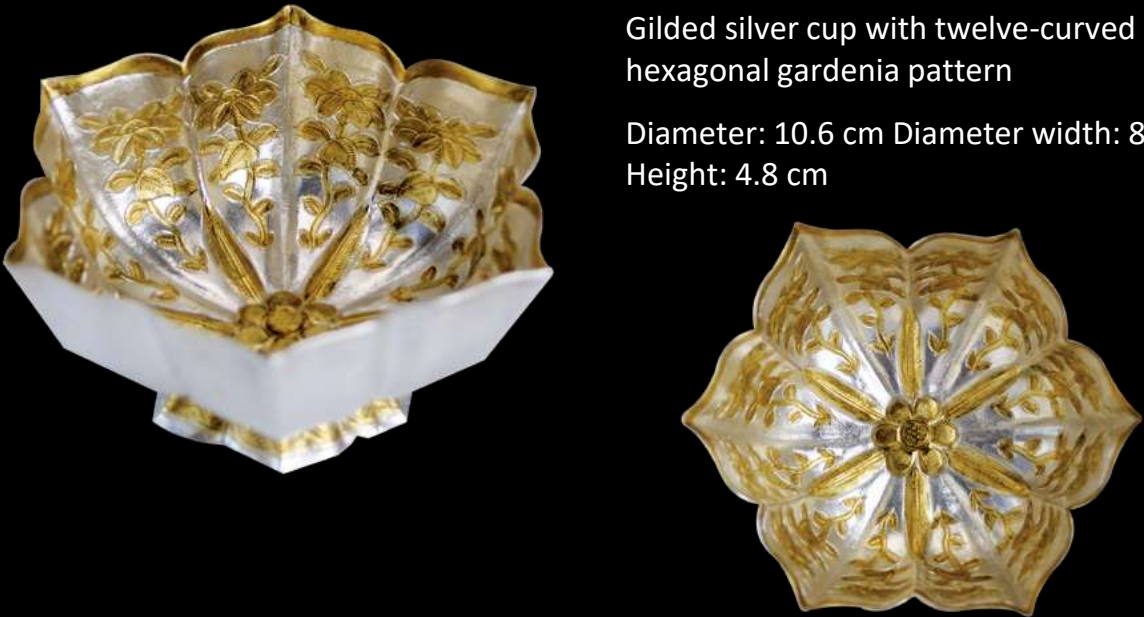


Qing Dynasty Gold-carved Cloud Dragon Pattern Ewer



Height: 32.5cm
Abdominal diameter: 14.5cm
Diameter: 7.5cm
Bottom diameter: 10cm

Gilded silver cup with twelve-curved
hexagonal gardenia pattern
Diameter: 10.6 cm Diameter width: 8.5 cm
Height: 4.8 cm



Gilded eight-petal silver cup with hunting lady pattern
Diameter: 9.5 cm Height: 5 cm Bottom diameter: 5 cm



Hunting pattern tall silver cup
Diameter: 6.8 cm Height: 7.7 cm



Silver wine cup with creeping grass and mandarin duck pattern
Length: 12.2 cm Width: 11.5 cm Height: 3.2 cm



Octagonal cup with creeper, flower and bird pattern
Diameter: 6.2 cm Height: 5.8 cm Bottom diameter: 2.8 cm



Silver pot with dancing horse holding cup pattern
Length: 12.5 cm Width: 10 cm Height: 16 cm



Blue gold cup
Height: 6.8 cm Diameter: 8 cm



Fish dragon cup and plate
Cup diameter: 9 cm Plate
Diameter: 20 cm
Total height: 12.3 cm



Golden bell with double lion pattern
Diameter: 12.6 cm Height: 6.8 cm



Three-legged hunting-patterned animal-head pot
Height: 12.2 cm Belly diameter: 15.5 cm



Eight-petal fish dragon cup
Diameter: 13 cm Height: 3.5 cm
Bottom diameter: 5.5 cm



Phoenix-head covered vase
Height: 30.8 cm Belly diameter: 14.2 cm



Double fish cup with plate
Cup length: 12.8 cm Width: 8.6 cm
Plate length: 17.5 cm Width: 14.3 cm
Height: 3.3 cm Height: 1.5 cm



Stem wine glass
Upper diameter: 7.3 cm Height: 5.1 cm
Bottom diameter: 3.7 cm



Phoenix head pot
Height: 32 cm
Belly diameter: 12.8cm



Garuda
Length: 22 cm Width: 11 cm
Height: 17.5 cm Base diameter: 9 cm



Monster
Length: 34.5 cm Width: 9.8 cm Height: 13.3 cm



Tiger Talisman
Length: 20 cm Width: 9.8 cm Height: 13.3 cm





Silver box with flying hawk pattern
Diameter: 6.5 cm Thickness: 2.5 cm



Gilded pot base with silver beads
Height: 21.8 cm Diameter: 11 cm



Gilded silver box with flying lion pattern
Diameter: 13.2 cm Height: 5.8 cm



Gilded silver box with double lion pattern and diamond arc-shaped ring foot
Length: 20 cm Width: 20 cm
Height: 15 cm Bottom diameter: 14 cm





Peach-shaped box with double phoenix pattern
Height: 7 cm Width: 9.8 cm



Silver box with flower and bird patterns
Diameter: 6.1 cm Thickness: 5.5 cm



Round box with double phoenix pattern
Diameter: 8 cm Thickness: 2.8 cm



Tea cup with exotic animal pattern
Diameter: 12.3 cm Height: 6 cm





Eight Treasures Tribute Plate

Upper diameter: 20.5 cm
Bottom diameter: 12.6 cm
Height: 12.5 cm



Melon and fruit disc

Diameter: 19.5 cm
Height: 1.5 cm



Silver plate with guipure pattern

Diameter: 15.5 cm Height: 1.5 cm



Silver plate with sea beast pattern

Diameter: 17.3 cm Height: 1.8 cm





Dragon plate
Diameter: 27.5 cm



Lion-patterned disc
Diameter: 24.5 cm
Height: 2.3 cm



Ruyi Phoenix Plate, Ruyi Dragon Plate
Diameter: 24 cm



Birthday round plate
Diameter: 28 cm



Plate with double phoenix pattern
Diameter: 23.5 cm
Height: 2.4 cm



Pisces disc
Diameter: 6.8 cm



Silver plate with double fox pattern
Length: 22.3 cm Width: 17.5 cm
Height: 2.2 cm



Gilded silver bowl with lotus petal pattern and dragon head
Diameter: 14.7 cm Height: 5.6 cm Bottom diameter: 6.8 cm



Gilded sea monster water ripple silver bowl
Diameter: 11 cm Height: 4.3 cm Bottom diameter: 5.6 cm



Large bowl with lid and dragon and fish pattern
Diameter: 23 cm Height: 10 cm
Diameter of upper plate: 11.6 cm
Diameter of bowl bottom: 11.4 cm



Gold bowl with mandarin duck and lotus petal pattern
Height: 5.5 cm Diameter: 13 cm
Foot diameter: 6 cm



Gilded silver bowl with grape dragon and phoenix patterns
Diameter: 11.8 cm
Height: 4.6 cm
Bottom diameter: 6.6 cm



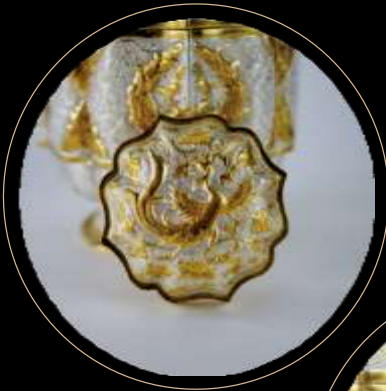


Xuanhui bowl
Diameter: 14.5 cm
Height: 5.2 cm
Bottom diameter: 7.5 cm



Phoenix pattern tea can

Diameter: 9.8 cm Height: 15.5 cm Bottom diameter: 7.5 cm



Parrot pattern jar with handle
Diameter: 18.5 cm
Height: 20 cm





Hairpin

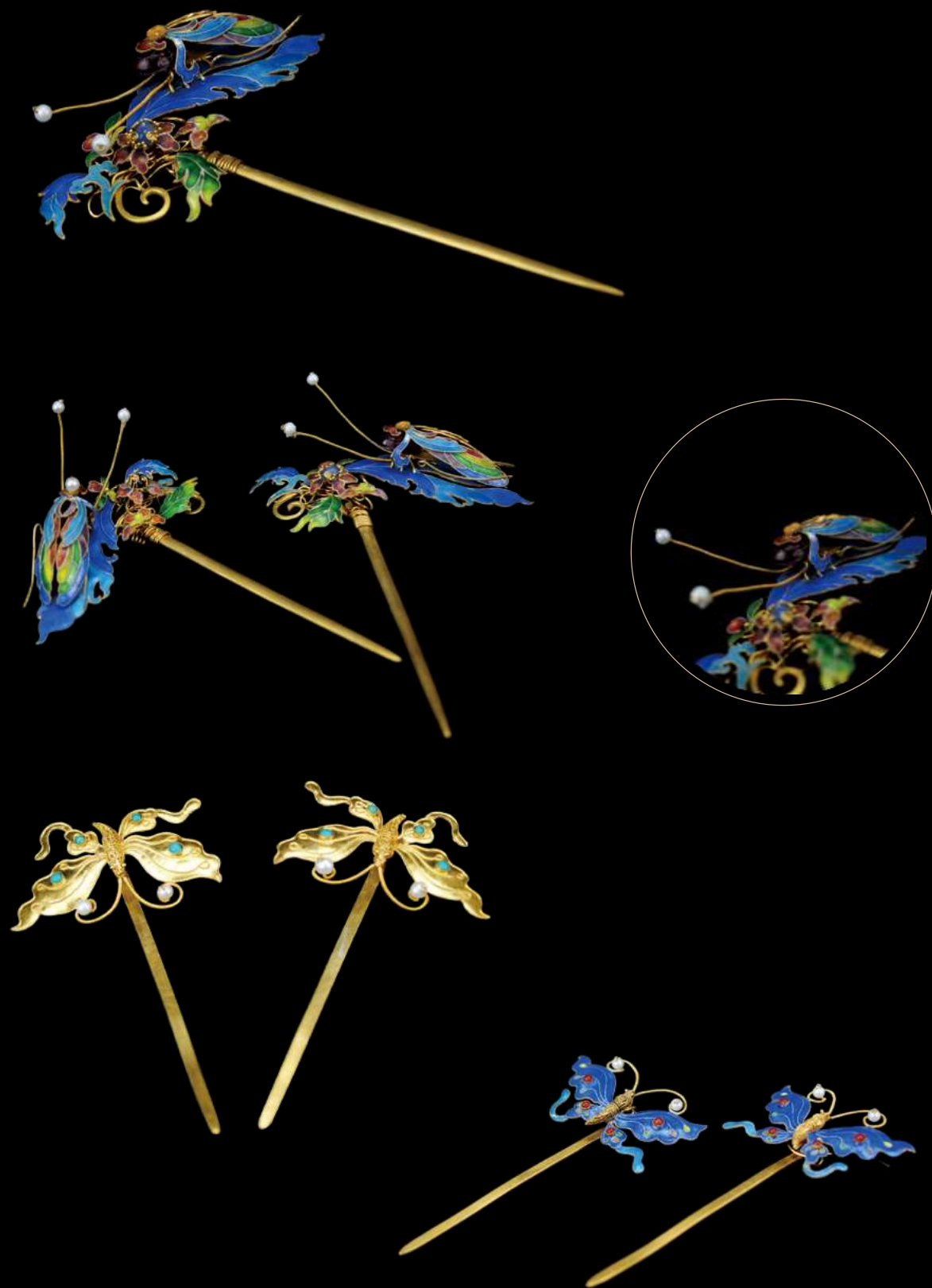
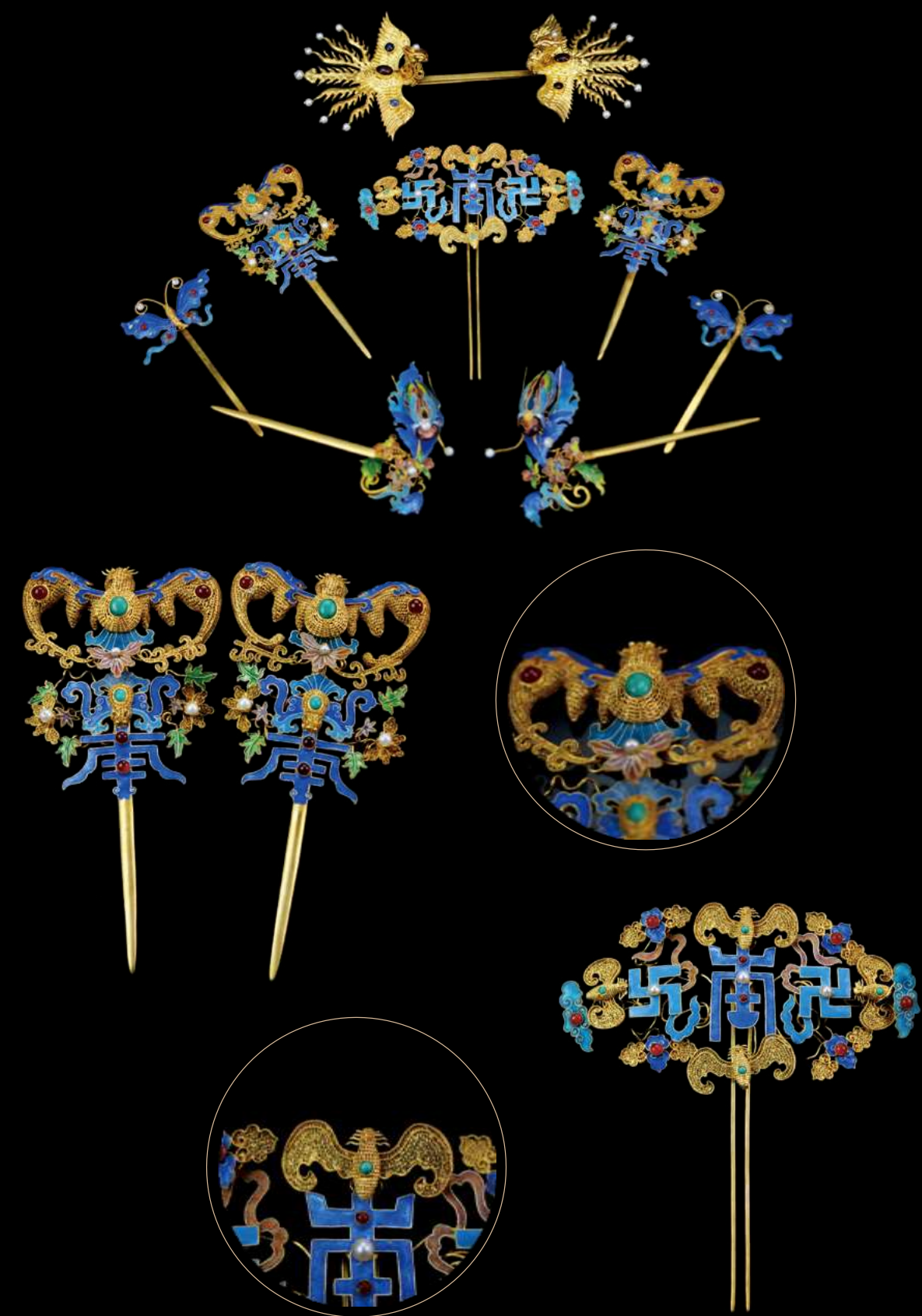


Prince Crown











Eight Treasures Combination

Width: 25cm

Height: 50cm

Weight: 2.2kg

Introduction: The offering vessel in front of the Buddha is composed of eight patterns that symbolize auspiciousness, perfection, happiness, wisdom, and treasure. These eight treasures are offered by the gods and are said to represent the eight parts of Sakyamuni's body when he became a Buddha, and each has its own meaning.



Duck Water

Width: 23cm

Height: 11cm

Weight: 0.68kg



Introduction: The duck-shaped water jet is inspired by the classic auspicious shape of "Duck Wearing Lotus". The duck character in the duck wearing lotus has the character Jia next to it, which is homophonic with the character Jia in Kejia. Since ancient times, the character Jia has meant passing the exam. Moreover, the character Jia belongs to the wood element, which is particularly suitable for people who lack wood. It represents integrity, purity and continuity. Therefore, the duck wearing lotus is engraved with a duck or a pair of ducks with lotus leaves or lotus flowers. They all imply the meaning of winning the first place in the imperial examination and passing the exam. They can also be used to promote Wenchang and civil service. In the Ming and Qing Dynasties, the duck wearing lotus was a very classic shape, and was mostly made into jade carvings, pendants, paperweights or ornaments. The two ducks wearing lotus, the duck lying with ears in mouth, etc., all have three meanings: one is the leisure and pleasure of the literati "Jade Pool Spring Water", the second is the metaphor of peace and harmony between husband and wife, and the third is the blessing of first place.



Tang Dynasty elephant-shaped five-legged stove

Width: 17cm

Height: 23cm

Weight: 1.08kg

Introduction: The incense burner continues the gorgeous style of the Tang Dynasty, and is engraved with Tang Dynasty-style patterns all over. It symbolizes longevity, health, continuous blessings, auspiciousness and elegance, and is decorated with a mouth ring, adding a touch of lightness to the solemn body of the burner. The overall shape is complex but not complicated, gorgeous but moderate, highlighting the atmosphere of wealth and nobility in the Tang Dynasty.



Lotus-shaped Ganoderma lucidum ear elephant foot incense burner

Width: 18cm

Height: 23cm

Weight: 1.48kg

Introduction: Lotus-shaped Ganoderma lucidum ear elephant foot incense burner is an antique art collection full of historical charm and artistic charm. Its unique shape, exquisite craftsmanship and gorgeous colors fully demonstrate the superb level of metal craftsmanship during the Qianlong period. This incense burner can be used as a sacrificial item or as an incense burner. This incense burner has auspicious and beautiful meanings in traditional Chinese culture, and the carved patterns symbolize auspiciousness and good luck. The incense burner is a precious antique art work that integrates history, culture and art. It is not only an exquisite handicraft but also a collection with high historical and cultural value. This incense burner not only demonstrates the superb level of metal craftsmanship at that time, but also reflects the aesthetic taste and cultural pursuit of the society at that time.



Square furnace with dragon, phoenix and sea beast pattern

Width: 26cm

Height: 25cm

Weight: customizable

Introduction: Square furnace with dragon, phoenix and sea beast pattern - exquisite Buddhist temple offering furnace, with regular shape, thick, elegant color and excellent appearance. The dragon is a feature of the Yongle and Xuande dragons of the Ming Dynasty, the sea beasts are fierce, and the waves are delicate, which is very valuable for collection.



Width: 23cm
Height: 23cm
Weight: 0.22kg

Introduction: Openwork relief carving, first-class gold and water preservation, exquisite craftsmanship, and the preservation of the whole device is very rare.



Flat bottle with coiled dragon and twig pattern

Item number: 0003

Width: 16.5cm

Height: 22cm

Weight: 0.22kg

Introduction: Flat bottle with coiled dragon and twig pattern, high relief carving, delicate dragon pattern, full gilding, lifelike, large, pure gold, exquisite craftsmanship, unique shape.



Tang Dynasty Parrot Pattern Tripod Jar

Width: 10cm

Height: 12cm

Weight: 0.65kg

Introduction: The Parrot Pattern Tripod Jar is a Tang Dynasty cultural relic. The jar is decorated with parrots as the main body. The parrot in this jar raises its head, flaps its wings, and lifts its tail. Its delicate feathers are clearly visible. Parrots can talk and were called "divine birds" in ancient times. In the Tang Dynasty, parrots mainly inhabited the south and northwest of Longshu and other places. Since the court officials and nobles of the Tang Dynasty liked to raise them, parrots were often presented to the court as "local offerings" from all over the country, and they also became the favorite pets of the princes and nobles of the Tang Dynasty.



Tang Dynasty Figure Tripod Pot

Width: 11.5cm

Height: 14cm

Weight: 0.22kg

Introduction: Tang Dynasty Figure Tripod Pot This vessel is only 14cm high and 11.5cm in diameter. Although it is not large in size, it embodies a profound historical and cultural heritage and exquisite craftsmanship. Copper gilding is an ancient metal craft. The vessels made by this craft are not only gorgeous in appearance, but also can maintain their original brilliance after years of baptism. Tripod is a kind of ancient utensils with three legs, usually used for cooking sacrifices or tribal food. This work, with delicate figure story patterns engraved on the surface, shows the ancient people's love for myths and legends or historical stories. These patterns are lifelike, and the figures are lively. Whether it is clothing, expression or action, they all reveal distinct character characteristics and emotions. This carving technique not only shows the superb skills of the craftsmen of the past, but also allows us to see the ancient people's love for life and pursuit of art. In addition, this artifact also has a certain historical value. Judging from its production process and pattern characteristics, it is likely to be a relic of an ancient kingdom or civilization. For the study of the social culture, religious beliefs and lifestyle of that era, this work represents not only the craftsmanship and aesthetic level of the ancients, but also a witness to a period of history. It tells the life stories of ancient people. It conveys the spiritual connotation of ancient culture. It enables us to better understand and appreciate ancient civilization. In short, this work has become a shining pearl in the collection of antique art with its unique artistic charm and precious historical value. Whether it is appreciating its exquisite craftsmanship or tracing its profound historical origins, it can bring us endless cultural enjoyment and profound thinking. In the years to come, we expect more people to pay attention to and study this precious antique artwork, through which they can learn more about ancient culture and lifestyle, and feel the charm of ancient wisdom and art. At the same time, we also hope that we can better protect and inherit these precious cultural heritages so that their historical value can be more widely recognized and respected.



Golden Ou Yonggu Cup

Width: 11.5cm

Height: 14cm

Weight: Customizable

Introduction: Golden Ou Yonggu Cup is a ceremonial vessel used by Emperor Qianlong in the Ming Kaibi Ceremony at the East Warm Pavilion of the Hall of Mental Cultivation during the New Year. "Golden Ou Yonggu" means that the country is stable and the world is peaceful. Qianlong made four Golden Ou Yonggu Cups for himself. The one in the Palace Museum in Beijing is the latest one, which was remade because the previous cup was damaged. The other three are currently in the National Palace Museum in Taipei (one) and the Wallace Collection Museum in London (two). According to the Qing Dynasty's "Neiwufu Huojijian", this cup has "Jin Ou Gu" written in seal script on one side and "Qianjiang Nianzhi" engraved on the other side: the outside is fully engraved with Baoxiang flowers, and there are still some traces of kingfisher feathers in between. The stamens are mainly made of pearls and red and blue sapphires. There is a deformed dragon ear on each side, with a pearl on the dragon head and three feet in the shape of elephant heads. The elephant ears are slightly smaller, with long tusks and a curled nose, and jewels are also inlaid on the forehead and between the eyes.



Hua Gu

Width: 13.5cm

Height: 27.5cm

Weight: Customizable

Introduction: Hua Gu has a beautiful shape and mysterious and complex patterns. It has always been an important artifact in ancient Chinese banquets. It contains the history of my country's profound etiquette culture and wine culture, and has deeply accumulated the civilization of my country's artifact era. Hua Gu has a graceful shape, dignified and generous, and rich line changes. The characteristics of the times are very obvious. The Hua Gu of the Ming Dynasty is mainly three-section, with a trumpet mouth on the top, a bulging belly in the middle, and a circle foot outward at the bottom. It is the best among artifacts. The shape of the vessel is simple and elegant, the relief patterns are simple and mysterious, complex and luxurious, and it shows the historical charm. From the perspective of historical and cultural aspects, it has great significance for collection and investment.



Offering Box

Width: 12.5cm

Height: 18cm

Weight: 1.33kg

Introduction: Offering box is a box used to offer to gods or ancestors in religious or family sacrifices. It is mainly used to place tea, wine or other offerings, usually placed in front of the incense burner on the god eucalyptus. It is common in ancestral halls and family halls, especially when used for sacrifices or ancestral worship. It has rich shapes and decorations, often dominated by auspicious patterns. These boxes may be designed as small single-layer god eucalyptus shapes to meet different religious or cultural needs. In the market, offering boxes have various forms and designs, such as shrines, god racks, etc. These products are not only used in religious places, but also widely used in homes to meet different religious and decorative needs. In general, offering boxes are important offerings in religious and family sacrifices, used to express respect and prayers to gods or ancestors.



Wanshi Longer Incense Burner

Width: 23cm

Height: 23cm

Weight: 0.22kg

Introduction: Wanshi Longer Incense Burner consists of two parts: the lid and the body. The patterns are exquisite, the lions and dragons are delicately and vividly depicted, and the casting is exquisite. The incense burner with ears looks majestic during sacrifices, symbolizing that the incense burner has a guard to protect it from being violated. This is a precious Qing Dynasty incense burner with a solemn and mysterious shape.



Longevity peach box

Length: 14.5cm

Width: 10.3cm

Height: 8.8cm

Weight: 0.5kg

Introduction: Longevity peaches represent good luck, health, and longevity. This box is shaped like a longevity peach, decorated with auspicious clouds, and decorated with longevity and good fortune. Its branches and leaves are used as handles, and the top and bottom are used as lids. It has an exquisite shape, exquisite craftsmanship, and beautiful meaning. It is a rare collection and gift.



BD



Phone: +86 18930985707 / +86 18217778682

E-mail: will@hkbuding.com

Web: <https://www.bdxtrading.com>