



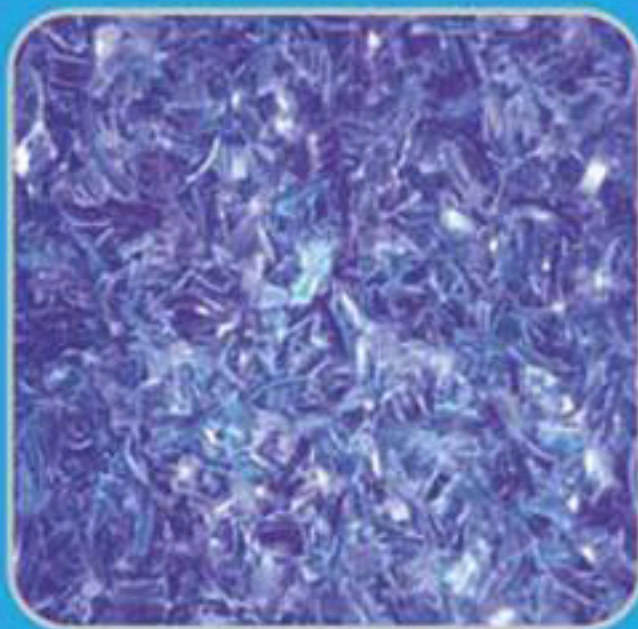
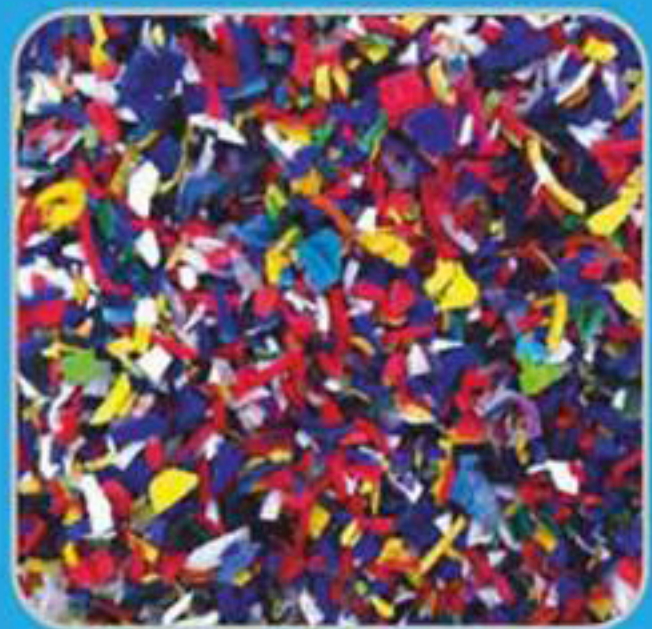
**HENNING SAINT**

More Intelligent | More Convenient | More Outstanding

# CCD COLOR SORTER FOR PLASTIC



**Double Belt-Type Color Sorter**



## PRODUCT FEATURES

### High Sorting Accuracy with Belt Type Structure

This provides a stable and uniform conveyor system that will make the sorting process simple and easy. This is because the desired products and the impurities will move at the same speed which increases the accuracy of the sorting system as compared to chute-type sorters. Unique double layer belt-type design could finish all the processing procedure at one time.

### Full Color CCD Camera

Equipped with 2048 pixels industrial cameras and high-speed image acquisition card, easily able to recognize subtle color differences and identify extremely small defects.

### Less Rejection Rate

Unique picture acquisition calculation method reduces the break rate of raw materials so that to maximize the benefit to the customer.

### Computer Operating System

In order to separate material with different colors, we use a computer to operate the main machine. Compared with the former touch screen, our computer operating system has a user-friendly interface, higher resolution & equipped with multi-functional picture acquisition system.

### Real-Time Display

Real time image display on the screen, able to monitor and increase the quality of sorting any time which highly improves the sorting accuracy.

### LED Lighting Source

All of our machines are equipped with LED lighting source, even illumination and 10 times longer life span than normal lamps lighting source.



[viviankan@henningst.com](mailto:viviankan@henningst.com)



[www.henningsaint.com](http://www.henningsaint.com)



[www.facebook.com/IntelligentVisionEquipmentSupplier](https://www.facebook.com/IntelligentVisionEquipmentSupplier)





**HENNING SAINT**

More Intelligent | More Convenient | More Outstanding

# CCD COLOR SORTER FOR PLASTIC

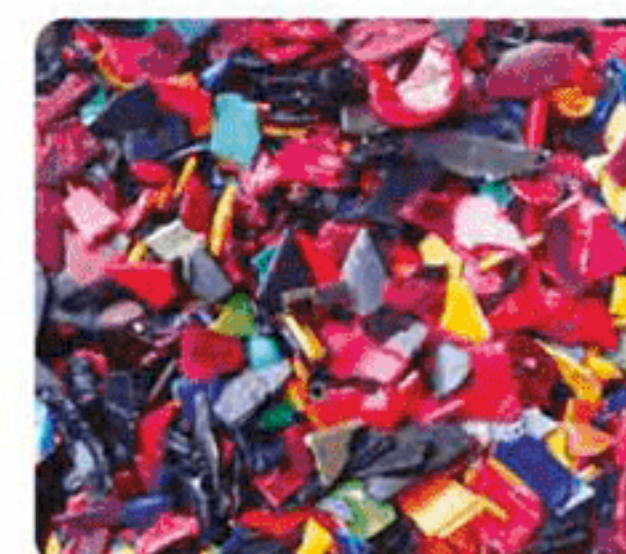
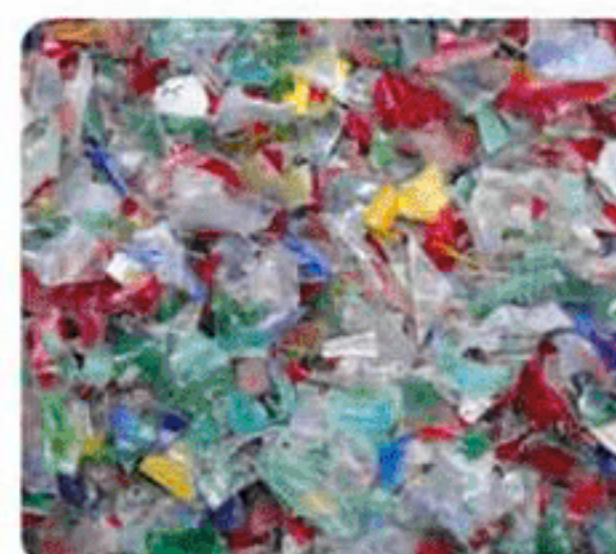


## Product Parameters

NAME	PLASTIC COLOR SORTER
Type	HSL2-512
Ejectors	512
Output (t/h)	1.0 - 2.0 (depends on raw material)
Sorting Accuracy (%)	> 99.98
Optimized Carryover (bad : good)	8:1
Voltage (V)	220 (50Hz)
Power of Main Machine (Kw)	7.5
Air Pressure (Mpa) / Flow m <sup>3</sup> /min	0.6 - 0.8 / 2.4 - 3.6
Dimension (L x W x H) (mm)	4288×2320×2400
Weight (Kg)	1800

\* Note : All the performance data listed above is taken on 2% impurity; the actual parameters are subject to different materials, size, impurity quantity, etc.

## Recycled & Virgin Plastic Sorting



calvin@henningst.com



www.henningsaint.com



www.facebook.com/IntelligentVisionEquipmentSupplier