



HARSHI IMPEX

IS THE LEADING AND BEST EXPORTER OF GLAZE VITRIFIED TILES (GVT), POLISHED GLAZE VITRIFIED TILES (PGVT) & DIGITAL WALL TILES FROM INDIA.

We Using High-Quality Ceramic Materials And Machinery for making premium tiles and always Keep In Mind International Quality Standards. Tiles are Highly recommended by Our Clients For Their Features Like Perfect Finish, Ease of Clean, Scratch Resistance, Minimum Water Absorption, Attractive Design, And Lightweight. To Ensure Their Quality, The Offered Tiles Are Stringently Tested On Various Quality Parameters By Our Quality Experts. These Are Known For Their Features Like Weather Proof, Easy to Apply, High Quality, Accurate Composition, And Purity.

Harshi Impex Provides Some Of The Finest Tiles In The Country Using Advanced Technology And Materials, Ensuring You Get The Best Value For Your Money. We Have More Than 1800+ Designs In Digital Wall Tiles And More Than 2500 Designs In Glaze Vitrified Tiles (GVT) And Polished Glaze Vitrified Tiles (PGVT). If You Want Top-notch Tiles At An Affordable Price, Consider Harshi Impex In India.





VISION

"Harshi means happiness" Our vision is to give happiness to our customers by providing the best quality products services, and values.

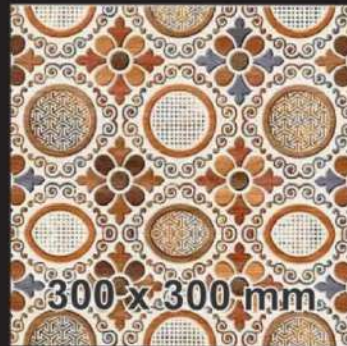


MISSION

Harshi is a client-centric organization, Always endeavors to meet clients' specific requirements and surpass their expectations with an innovative and upgraded range of digital wall tiles and vitrified tiles. For the same, we ensure that quality products to delivered within the promised time frame.



WALL TILES



VITRIFIED TILES

600 X 600 MM (NANO)

600 X 600 MM (GVT / PGVT)

800 X 800 MM (GVT / PGVT)

600 X 1200 MM (GVT / PGVT)

800 X 1600 MM (GVT / PGVT)

1000 X 1000 MM (GVT / PGVT)

1200 X 1200 MM (GVT / PGVT)

800 X 2400 MM (SLAB)

1200 X 1800 MM (SLAB)

1200 X 2400 MM (SLAB)



**OUTDOOR
PORCEELAIN
TILES**



600 x 1200 mm



600 x 900 mm



600 x 600 mm



SURFACE
MATT - R09 & R11

THICKNESS
16mm & 20mm

SIZE
600x1200mm
600x900mm
600x600mm



FINISHES

- **HIGH GLOSS**
- **GLOSSY**
- **MATT**
- **CARVING**
- **METALIC**
- **RUSTIC**
- **SUGAR**
- **SATIN**

QUALITY ASSURANCE

Our provided tiles' quality augmented to spread out our business to deliver top-notch tiling solution products and unbeatable customer service experience in local and international tile markets. Harshi Impex have its in-house quality and inspection team with eyes for detailed quality inspectors, and experienced professionals ensure that the tiling solution is of the best quality.

FEATURES



Frost resistant



Colors do not fade over time



Resistant to sudden temperature changes



Resistant to acid, chemicals, salt, etc.



Special matching pieces



Impervious



Antislip
Rutschfest



Quick and easy to install



Quality Parameters*

*

Product	Inspection / Test	Inspection / Test Method	Value
Digital Glazed Vitrified Tiles	Deviation in length and Width	ISO-10545-2	\pm 0.1 to 0.3 mm
	Deviation in Thickness	ISO-10545-2	\pm 0.1 to 0.4 mm
	Straightness of Sides	ISO-10545-2	\pm 0.1 to 0.2 mm
	Rectangularity	ISO-10545-2	\pm 0.1 to 0.3 mm
	Curvature	ISO-10545-2	\pm 0.6 to 0.3 mm
	Glossiness	Marker Pen	>97
	Stain Removal Test or Marker Test	Glossy Meter	Marker Removed Completely
	Water Absorption	ISO-10545-3	\leq 0.05 %
	Modulus of Rupture	ISO-10545-4	450 Kg/Cm 2
	Breaking Strength	ISO-10545-4	>2000 N

Quality Parameters*

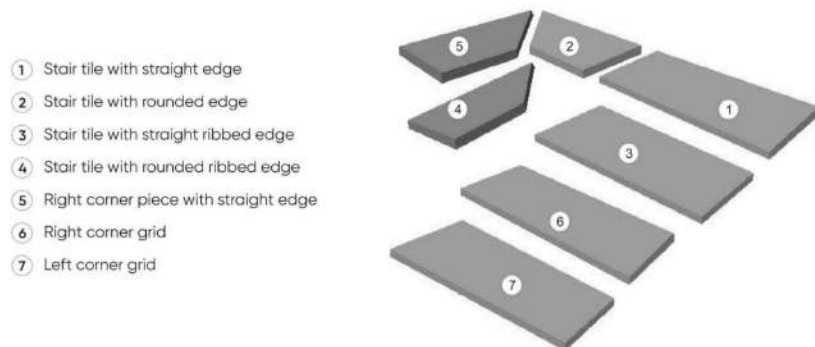
*

CERAMIC WALL TILES TECHNICAL SPECIFICATION		
CHARACTERISTICS	EURO STANDARDS EN-159/IS13753	VALUE
DIMENSION & SURFACE QUALITY		
1) Dimension	$\pm 0.5 \%$	$\pm 0.2 \%$
2) Deviation In Thickness	$\pm 0.6 \text{ mm}$	$\pm 0.2 \text{ mm}$
3) Straightness of sides	$\pm 0.3 \%$	$\pm 0.2 \%$
4) Rectangularity	$\pm 0.5 \%$	$\pm 0.3 \%$
5) Surface flatness	$\pm 0.5 \%$	$\pm 0.3 \%$
6) surface quality	min 95%	min 96%
PHYSICAL PROPERTIES		
1) Water Absorption	$> 10\%$	13.50%
2) Bending Strength	$> 150 \text{ fg/cm}^2$	200-250 fg/cm ²
3) Scratch Hardness (mohs)	Min 3	Min 3
4) Crazing	1 Cycle	No Crazing at 5 cycle
Chemical PROPERTIES		
1) Staining Resistance	Min Class 2	resistance to all acids
2) Household Chemical	Min Class B	and alkaline & household
		chemical, except hydro fluoric
		acid
THERMAL PROPERTIES		
1) Thermal Shock	Resistance To 10 Cycle	CONFORMS
2) Thermal Expansion	Max-9e-06	CONFORMS

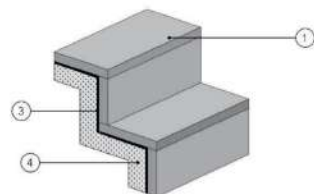
OUTDOOR PORCELAIN TILES

SPECIAL ELEMENTS

In order to guarantee excellent aesthetics and functionality for the various possible applications, the 20mm outdoor porcelain Our tile collections have a rich set of step elements and special pieces.

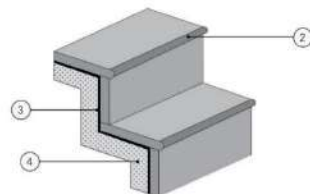


STAIR TILE WITH STRAIGHT EDGE

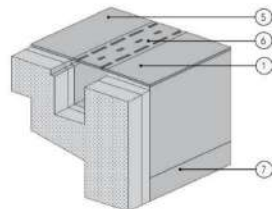


- ① Stair tile with straight edge
- ② Stair tile with rounded edge
- ③ Adhesiv
- ④ Screed
- ⑤ Flooring
- ⑥ Grid
- ⑦ Swimming pool covering

STAIR TILE WITH ROUNDED EDGE



SWIMMING POOL EDGE



CAUTION

The images are to be taken as an indication, and have the sole purpose of showing how to obtain a correct flooring. It is recommended to always refer to the specific norms and regulations in each individual country and the instructions of the project supervisor.

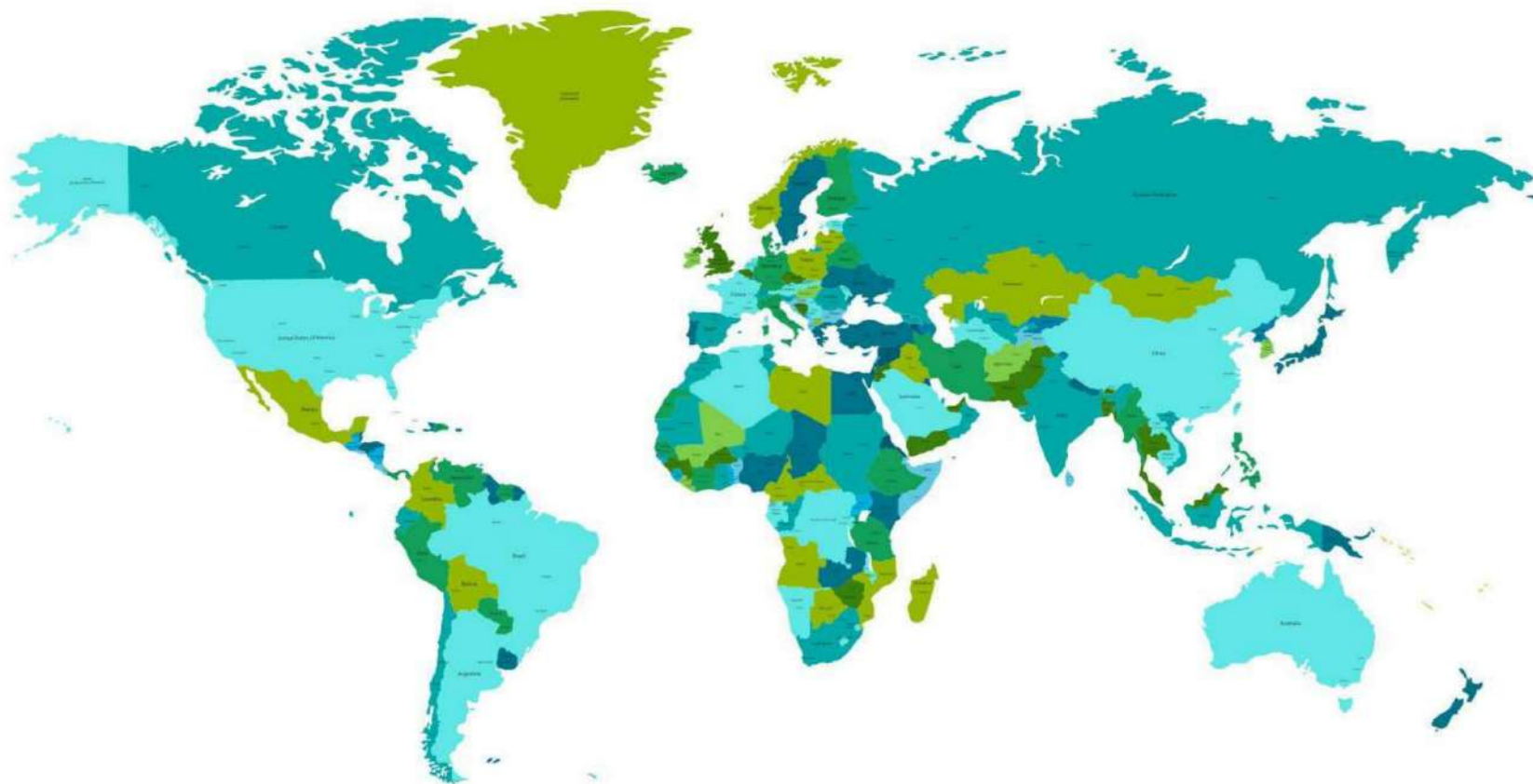
TECHNICAL DETAILS

TEST DESCRIPTION	ISO-13006/EN176 GROUP BIA	MEAN VALUE OF OUR	TEST METHOD
Length & width	±0.6 %	±0.3mm	Passed
Thickness	±5 %	±0.3mm	Passed
Straightness of side	±0.5 %	±0.3 %	Passed
Rectangularity	±0.6 %	±0.3 %	Passed
Surface flatness	±0.5 %	+0.35mm to -0.1mm	Passed
Surface quality	Minimum 95 %	Minimum 95 %	Passed
Water absorption	< 0.5 %	< 0.04 %	Passed
Breaking strength	> 1300N	> 1500N	Passed
Flexural strength (Average)	> 35N/mm ²	> 40N/mm ²	Passed
Scratch hardness of surface (Moh's scale)	> 6	> 6	Passed
Resistance to deep abrasion	<175mm ³	<144mm ³	Passed
Skid Resistance (Friction coefficient)	>0.4	>0.4	Passed
Bulk Density, in (g/cc)	>2	>2	Passed
Linear Thermal expansion	Max. 9.0° x K ⁺ , Max	Max. 9.0° x K ⁺ , Max	Passed
Thermal shock resistance	No damage	No damage	Passed
Frost resistance	Frost proof	Frost proof	Passed
Resistance to Chemical	Resistance	Resistance	Passed
Resistance to Stain	Resistant	Resistant	Passed
Moisture expansion	Nil	Nil	Passed
Colour resistance	Resistant	Resistant	Passed
Glossiness (Polished)	-	-	Passed

PACKING DETAILS (OUTDOOR):-

SIZE	BOX WEIGHT	PCS/BOX	SQM/BOX	SGFT/BOX	BOX/PALLET	PALLET/CTN	BOXES/CTN	TOTAL SQM/CTN	CTN WEIGHT (KG)
600x1200mm (20mm)	32.5	1	0.72	7.75	30	28	840	604.8	28000
600x900mm (20mm)	24.5	1	0.54	5.81	40	28	1120	604.8	28000
600x600 (20mm)	32	2	0.72	7.75	36	24	864	622.08	28000
600x1200mm (16mm)	25.5	1	0.72	7.75	70 & 34	12 & 7	1078	776.16	28000
600x900mm (16mm)	-	-	-	-	-	-	-	-	-
600x600mm (16mm)	25.5	2	0.72	7.75	40	27	1080	777.6	28000

The information contained in this catalogue is as accurate as possible, but cannot be considered as legally binding. The Company reserves the right to make any modification that become necessary due to production requirements. Weight colors and dimensions are subject to the inevitable variation typical of the ceramic firing process. The colors are possible to the actual colors, within the limits allowed by the printing process. For technical printing reasons, the colors shown may slightly differ from the actual tiles. VITRIFIED RESERVES THE RIGHT TO MODIFY THE TECHNICAL INFORMATION QUOTED IN THIS CATALOGUE.

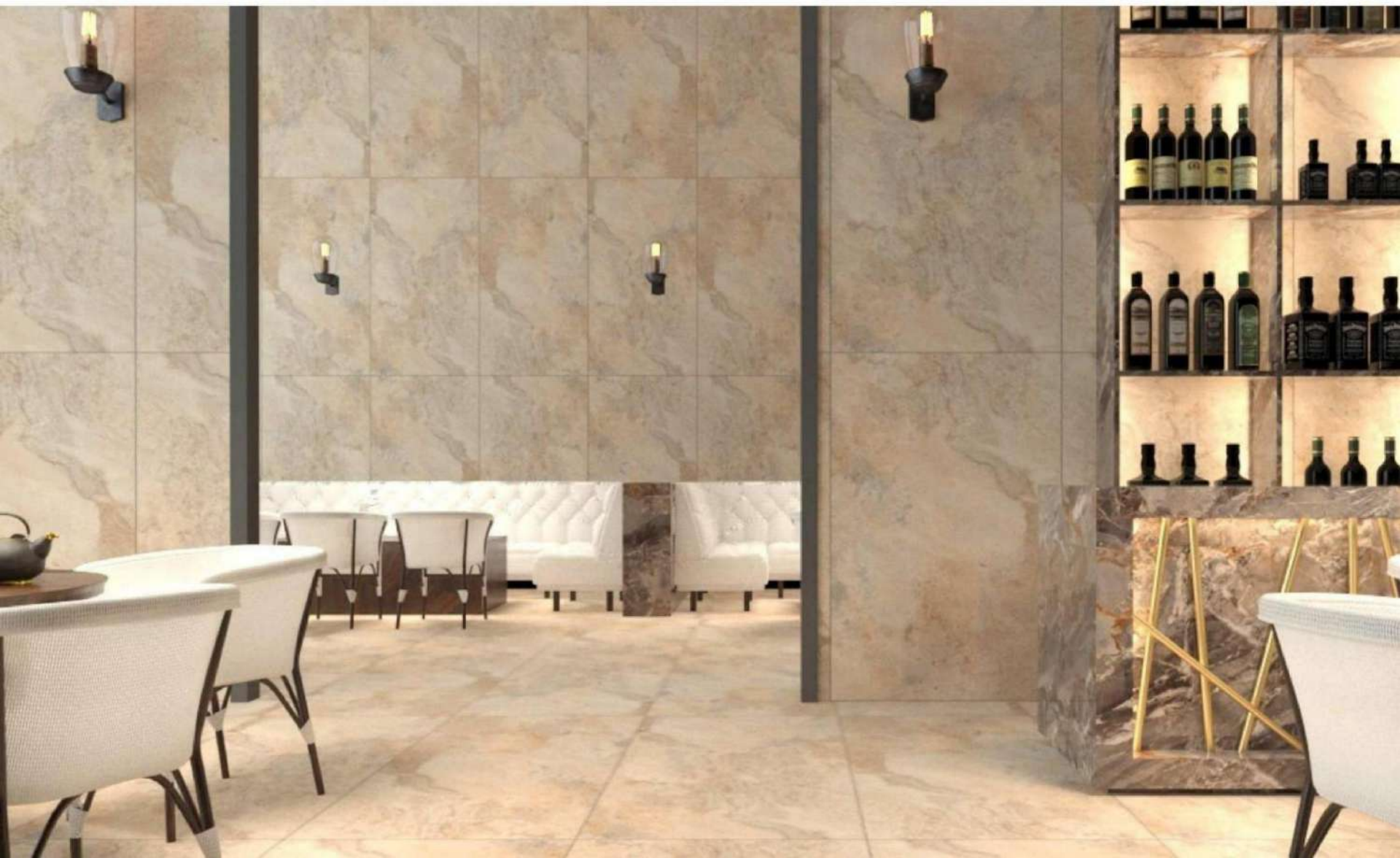










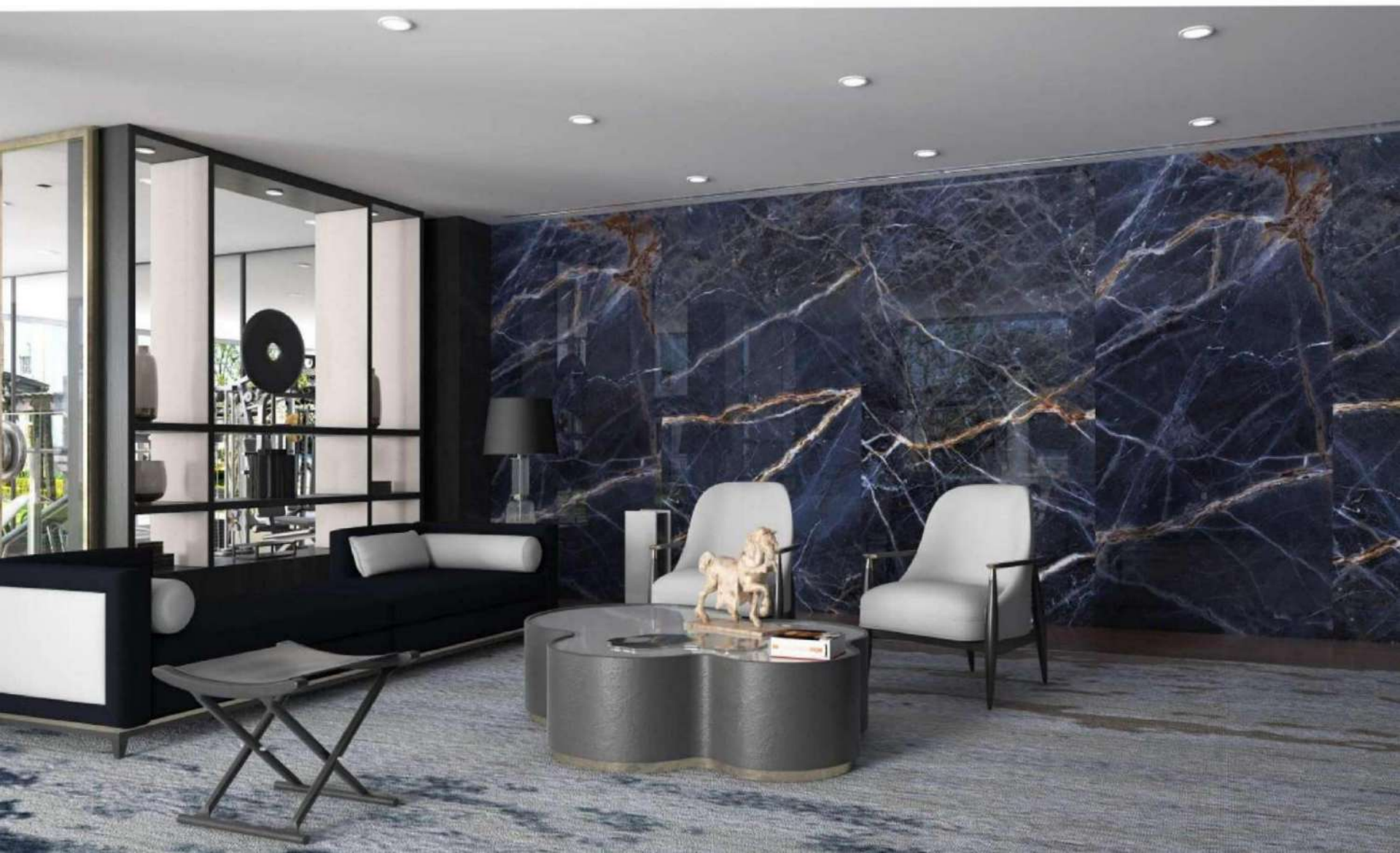






800 X 2400 MM (SLAB)





1200 X 1800 MM (SLAB)



☎ 9054986076
✉ info@harshiimpex.com
🌐 www.harshiimpex.com



600 x 900 mm



SWISS DARK

600 x 1200 mm



VOLGA BIANCO

600 x 600 mm



SHERPA BEIGE




HARSHI IMPEX LLP

**313,KALP BUSINESS PARK, NR.SHAJANAND BUSINESS
PARK, S.P.RING ROAD, NIKOL, AHMEDABAD-382350**

Email Id : Info@harshiimpex.com

Contact Details :

+9054986076

 www.harshiimpex.com