



CBO

PT Cahaya Bintang Olympic



BUSINESS PROPOSAL

cahayabintangolympic.com

Contents

01

Overview

02

Our Materials & Machine

03

Our Products

04

Certificates

05

Achievements

06

Future Goals

07

Contact



We are as Olympic Group

We have been producing fine-quality furniture for numerous markets around the world



1983



The Olympic Group was founded

Start export activity to Europe, Middle East, and US.



1990

2006

Olympic Group founded **PT Cahaya Bintang Olympic (CBO)** as a subsidiary concentrated in East Java. The product lines are kitchen sets and bedroom sets.

Expands our workforce up to 3.9 ha area of production. Production capacity is extended to 60-80 containers to local market in Indonesia.



2009

Celebrating a Milestone of Cahaya Bintang Olympic

2017



Our manufacturing area expanded to 14 ha and production capacity, both domestic and export, to 80 containers

successfully exported our products overseas for the first time!



2018

2021



Expand the manufacturing area to 19 ha and export products to various customers.

Four new buildings to support production expansion



2022



OUR

Company Profile

Vision

Become a professional furniture company so that it is trusted and chosen as well as proud and sustainable from generation to generation.

Mission

Providing comfort and satisfaction of cooperation in the furniture business and facilitating the welfare of employees and shareholders further preserving the competitive advantage of the Olympic furniture industry in a sustainable manner.


PT. Cahaya Bintang Olympic (CBO) is a knock-down furniture and upholsteries manufacturing company. CBO is under the Olympic group, which has been phenomenally existing for 40 years, producing a leading national furniture brand, "Olympic Furniture." With the same pride, CBO aims to produce ready-to-assemble furniture (RTA) for every need, including OEM (Original Equipment Manufacturer).


Production

PROCESS

Our warehouse uses the *FIFO* method to store raw material, hardware, and supporting material for more efficient material control.

 **Capacity 60.000 M3**, *up to 90 containers/month*

 **Total Area 190.000 M2**, *ongoing efforts to increase our plant size and capabilities as continuous investment*

 **Strategically located near seaport**, *enhances our service capabilities*





What We Do . . .



Solid Wood Furniture : Constructed entirely from solid wood

Veneer Furniture : Features a thin layer of high-quality wood (veneer) over a core of less expensive material like plywood or MDF

Particle Board Furniture : Made from particles of wood (wood chips, sawmill shavings, or sawdust) that are compressed and bonded together with a resin

MDF Furniture : Similar to particle board but made from finer wood fibers. It is denser and smoother than particle board

Plywood Furniture : Constructed from layers of wood veneers glued together with the grain direction alternating for added strength

Combination Furniture : Utilizes a combination of different materials in the construction, such as wood and metal or wood and glass

Our Services

- OEM & ODM

Professional Manufacturing Solutions

- Loose Item Design

Solution for whole furnishing

- Product Customization

Product material and size as requirement

- Customer-Oriented Approach

Coupled with high standards for excellence in service

40

Years of
operations

15

Awards
Winner

30k+

Happy
clients

1k+

Staff
members

5 Why choose us? Things

2

Latest Technology Integration

We invest in and adopt the latest technologies to stay at the forefront of innovation. This ensures that our customers benefit is aligned with the latest industry standards

4

High-Quality Standards

Quality is at the core of everything we do. Our quality control ensure that every product leaving our facility meets the industry standards. We believe in delivering not just products but a mark of excellence.

1

Competitive Pricing (Value -Based)

By leveraging advanced technology and implementing best practices, we maximize output while minimizing waste, resulting in cost-effective solutions and provide competitive pricing

3

Adaptable Order Quantities

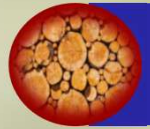
We offer adaptable order quantities to accommodate your unique needs and project requirements

5

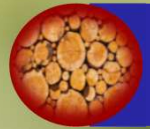
Punctual Delivery Time

With a well-organized supply chain and efficient logistics, we guarantee timely delivery, allowing our customers to plan and execute their projects seamlessly

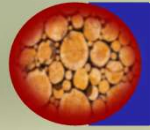
OUR WOOD MATERIALS



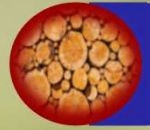
Mahogany



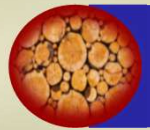
Plywood



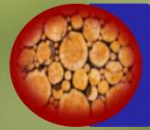
Meranti



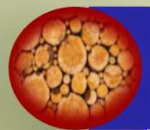
MDF



Rubber
Wood

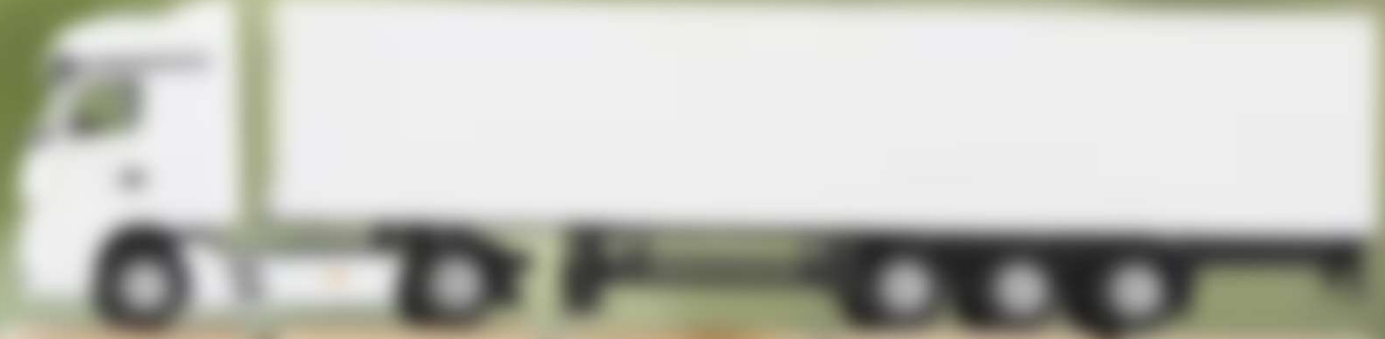


Birch



Mindy

To ensure we satisfy to your unique needs, we proudly offer a diverse range of high-quality wood materials.



OUR MACHINES



Running Saw



CNC Machine



WE
DO IT
*Perfectly &
Professionally*

OUR MACHINES



Rotary Clamping



Edge Banding

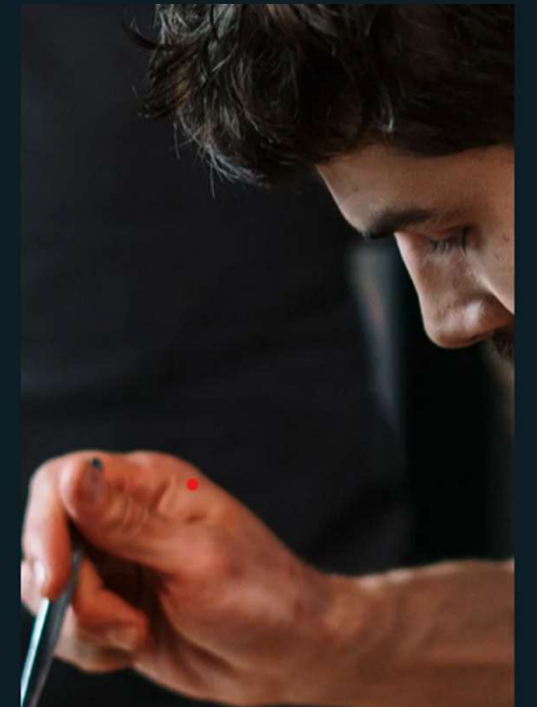


Automatic Drilling



Nesting

Where Precision Meets Passion in Production



OLYMPIC
FURNITURE

Crafting Excellence



OLYMPIC
FURNITURE

Molding Machine



Lacquer Sander



Thermofoil Machine



Spray Booth



ELEVATING SPACE

UV Roll



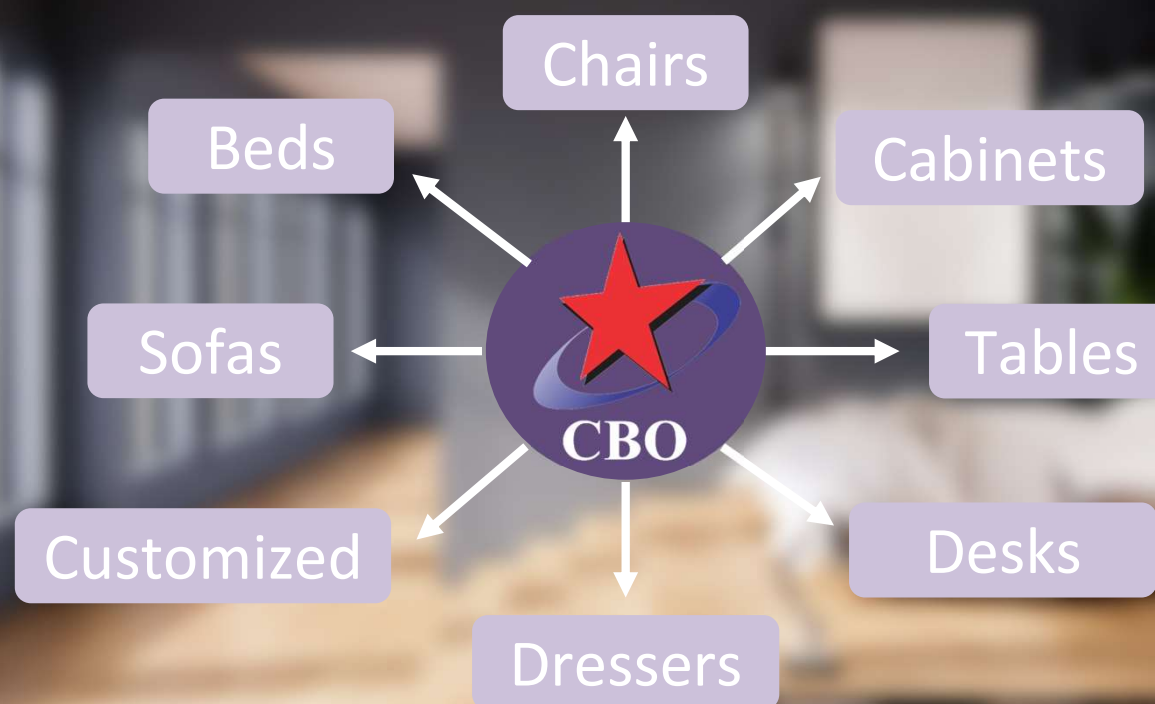
Auto UV Spray





PRODUCTS OFFERING

We produce fine quality ready-to-assemble furniture (RTA) for every need, including **OEM (original equipment manufacturer)**.
Our production capacity effectively produces up to 100 containers monthly



We offer a wide variety of furniture that can be customized to meet your needs and preferences.



V
E
R
S
A
T
I
L
E



SHELVES

HEADBOARDS

CABINETS

DRESSERS

CHAIRS

BED FRAME

MAKE UP SET

MULTI-PURPOSE SHELVES





Drawer Dressers





CABINETS



Dining - Living Room Furniture



CERTIFICATIONS

ISO 9001:2015

ISO CBO - Certificate of Approval PT. Cahaya Bintang Olympic by LRQA-ISO 9001:2015

WOOD CERTIFICATIONS

1. Mahogany Certificate - Certificate VLK No. P2T/07/16.04/VIII/2013
2. MDF - Certificate of Conformity SPF 21.22 CARB Certificate
3. PB - Certificate of Conformity
4. Rubber Wood - Certificate No VLK 00583
5. SVLK CBO - Registration Certificate By Mutu Certification International
6. Timber Legality Certification : LVLK-003/MUTU/LK-471
7. Certificate LVLK BRIK-QS No. BRIK-VLK-0062

EXPORTED COUNTRIES



EXPANSIONPLAN



SOUTHEAST ASIA
EUROPE
USA

Future goals

Increasing engagement and sales with existing customers

Capturing New Horizons in 2nd Semester 2024, by increasing 30% Market Expansion through Customer Acquisition






PT Cahaya Bintang Olympic

THANK YOU

Fadilah N.A. (Export Marketing Manager)

 +62 81554111715

 fadilah.cbo@gmail.com

 cahayabintangolympic.com

 Lamongan, East Java, 62291

