



Company Profile

Din Sweaters Ltd. factory situated at Ashulia, Savar, Dhaka. It produces Pullover, Cardigan, Muffler, Scarf made with Acrylic, Wool, Cotton as many types of fancy yarns. Din Sweaters Ltd. has the most upgrade generation of Stoll Machines (CMS 502 HP+).

Name ☐ Din Sweaters Ltd.

Factory ☐ 248, Motalibe Mansion, Minnat Ali Road, B-Bangla,
Gouripur, Ashulia, Savar, Dhaka

Chairman ☐ Md. Din Islam

Managing Director ☐ Mohammed Ariful Islam

amfori@BSCI ☐ DBID 407720

Membership ☐ Bangladesh Knitwear Manufacturer & Exporters
Association-**BKMEA**

Bank ☐ Standard Bank Ltd, Panthapath Branch, Dhaka
Swift Code: **SDBLBDDH118**

IRC Registration No ☐ 260326120559921

ERC Registration No ☐ 260326210508020

Fire License No ☐ D D/ Dhaka/25676/2020

EPB No ☐ BD06353

BIN No ☐ 002277336-0403

REX No ☐ BDREX02937

amfori  **BSCI**
Trade with purpose

DBID: 407720



Machineries



Stoll Flat Knitting Machines CMS 502 HP+ Multi Gauge E3, 5.2

“Save time on production with the highest fabric quality”-this is the principle of Stoll Multi Gauge machines. Din Sweaters offers best quality product knitted with the best machines in the industry.







Machineries List & Production Capacity

ITEM	Qty
CMS 502 HP+ Multi Gauge (3,5 & 7), Brand-Stoll Germany	32 Set
Fine gauge on process, Brand-Chinese	30 Set
Winding Machines including part opening	04 Set
Dial Linking Machines	42 Heads
Boiler-500kg	01 Set
Dryer-250 LBS	01 Set
Washing-250 LBS	01 Set
Hydro- 36"	01 Set
Steam Iron	18 Pcs
Monthly Estimated Production Capacity	52,000 Pcs

The Project Profile has been prepared on the basis of two shift of each day, 26 days in a month and monthly production capacity multi gauge (3, 5, 7gg) around 35000 pieces & fine gauge (12gg) 17,000 pieces knitting dependent on style.

Legal Requirements with COC & Welfare Program Maintained by Compliance dept.:

- ❖ **Working Hours** : Workers have a holiday on Friday as the weekly holiday. Factory maintains time records through time cards.
- ❖ **Child Labor** : Factory does not engage worker below 18 years old. Factory management verifies the age before recruitment with the assistance of a doctor and maintains all age related documents.
- ❖ **Health & Safety**: This is a major concern of our factory we check on a regular basis in order to ensure that all electric lines and equipment's are safe. Our factory has a fire evacuation plans and every month regular fire drills are carried out.
- ❖ **Festival Bonus** : Workers are given bonuses on the occasions of Eid-UL-Fiter and Eid-UL-Azha.
- ❖ **Worker Group Insurance** : All the workers of Din Sweaters Ltd is covered under a group insurance scheme with the assistance of BKMEA (Bangladesh Knitwear Manufacturer & Exporters Association).



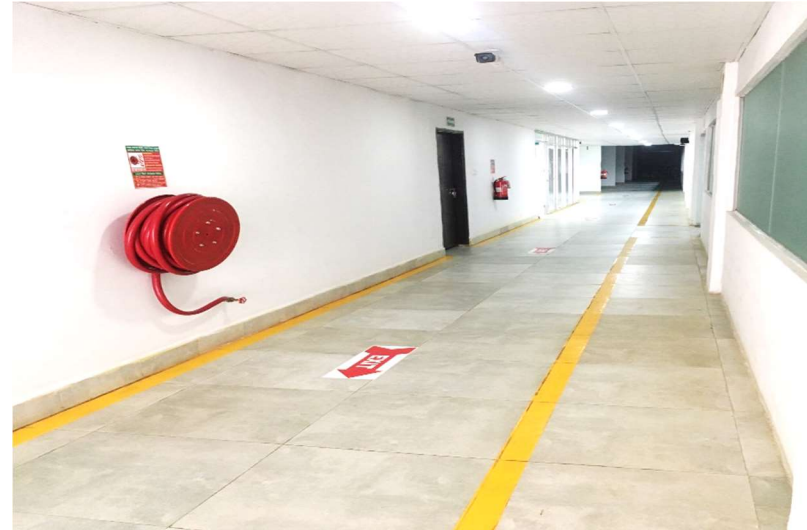
From the beginning, Din Sweaters Ltd. promised to our associate employees and workers to provide a safe and healthy work environment.



amfori  BSCI
Trade with purpose

DBID: 407720

amfori  BSCI
Trade with purpose
DBID: 407720



Contact US

Firoj Hossen, Marketing Director

Phone: +88-017-1420-2454

Factory Address:

248, Motalibe Mansion, Minnat Ali Road, B-Bangla,
Gouripur, Ashulia, Savar, Dhaka

web: www.din-bd.com

Email: arif@din-bd.com, info@din-bd.com, din.sweaters@gmail.com

amfori  **BSCI**
Trade with purpose

DBID: 407720