



COMPANY PROFILE



"Life Without Friction"
www.eiffellubricants.com

BURJ EIFFEL INT. LUBRICANTS IND. LLC WAS ESTABLISHED IN THE YEAR 2004. WITH EXTENSIVE TECHNICAL EXPERTISE AND RELENTLESS EFFORTS THE COMPANY HAS MADE A NAME SYNONYM TO "QUALITY". SINCE THEN IT HAS GROWN FROM STRENGTH TO STRENGTH AND HAS ESTABLISHED ITSELF AS AN ORGANISATION FOCUSED ON QUALITY, INNOVATION AND CUSTOMER CENTRICITY. THE COMPANY IS A LEADING LUBRICANT & GREASE MANUFACTURER IN THE REGION, WHOSE PRODUCTS ARE EXPORTED TO MORE THAN 45 COUNTRIES ACROSS THE MIDDLE EAST, EUROPE, FAR EAST, AMERICA AND AFRICAN REGION AND IS AN EMERGING FORCE IN THE LOCAL LUBRICANT AND GREASE MARKET.



LUBRICANTS

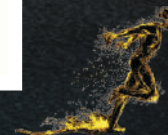
Life Without Friction





LUBRICATING THE WORLD







CEO'S MESSAGE

▶

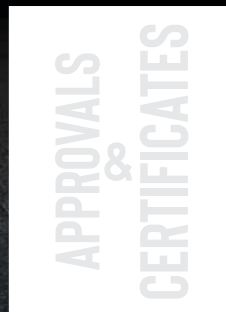
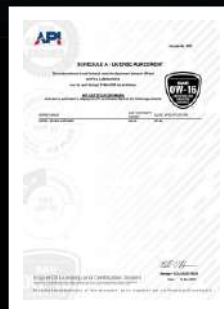
EIFFEL LUBRICANTS, A COMPANY SET APART BY THE IMPECCABLE STANDARD AND QUALITY OF ITS PRODUCTS HAS BEEN A MANUFACTURER OF LUBRICANTS AND GREASES FOR MORE THAN A DECADE. SELECTING THE CORRECT OIL WAS PREVIOUSLY A STRAIGHTFORWARD DECISION, YET WITH TIME AND BREAKTHROUGHS IN AUTOMOTIVE INDUSTRY HAVE UNCOVERED THE COMPLEX SCIENCE OF LUBRICATION AND THE VARIOUS ASPECTS THAT NEED TO BE CONSIDERED: THE ADVANCEMENT OF MULTIGRADE OILS, PROGRESSIVELY BETTER PERFORMING BLENDS, THE UNCEASING IMPROVEMENT OF ENGINES AND THE STRINGENT MEASURES BY GOVERNMENT TO ENSURE THE SAFETY OF OUR ENVIRONMENT ... YEAR AFTER YEAR. WE AT EIFFEL LUBRICANTS SEE THIS PROGRESSIONS AS A WELLSPRING OF INSPIRATION TO FURTHER DEVELOP OUR PRODUCTS AN INCLINATION FOR NEW IDEAS JOINED WITH HANDS ON INVOLVEMENT AND PROFICIENCY IN THE MANUFACTURING OF LUBRICANTS AND GREASES, MAKE EIFFEL LUBRICANTS AN EXCEPTIONAL ORGANIZATION THAT PUTS ENTHUSIASM AND DEDICATION IN THE PURSUIT TO EXHIBIT THROUGH SUBSTANTIAL OUTCOMES THAT **NOT ALL LUBRICANTS ARE EQUAL.**





LUBRICANTS
"Life Without Friction"

APPROVALS & CERTIFICATES





LUBRICANTS

"Life Without Friction"

ABOUT US

OUR FACILITIES

WE HAVE MULTIPLE STATE OF THE ART FACILITIES FOR BLENDING AND FILLING OF LUBRICANTS & GREASES, WITH AN INSTALLED CAPACITY OF BLENDING AND FILLING OF MORE THAN 40,000 MT OF LUBRICANTS, 16,000 MT OF GREASES AND 6,000 MT OF VISCOSITY IMPROVERS PER ANNUM.

OUR PHILOSOPHY:

IN THIS HIGHLY COMPETITIVE AND VOLATILE MARKET, WE STRIVE TO OFFER PRODUCTS AND SERVICES WHICH ARE UNIQUE AND DIFFERENTIATE US FROM COMPETITION. WE TREAT OUR CUSTOMERS AS BUSINESS PARTNERS AND BELIEVE THAT IN THEIR SUCCESS LIES OUR GROWTH. WE CONTINUOUSLY IMPROVE AND ENHANCE OUR OFFERINGS TO STAY A STEP AHEAD OF THE COMPETITION AND DELIVER IMPECCABLE QUALITY AND VALUE TO OUR CUSTOMERS.

TECHNOLOGY:

WE HAVE A COMPREHENSIVE RANGE OF LUBRICANTS BLENDED FROM THE FINEST BASE STOCKS PROCURED FROM WORLD CLASS SAUDI ARAMCO, EXXON MOBIL AND EUROPEAN REFINERIES & TECHNOLOGICALLY ADVANCED AND SUPERIOR ADDITIVES INDUSTRY GIANTS AFTON, INFINIUM, AND LUBRIZOL.

WE ALSO CARRYOUT THIRD PARTY BLENDING AND FILLING OF REPUTED BRANDS WHO EXPORT THESE PRODUCTS FROM OUR PLANT TO VARIOUS COUNTRIES.

OUR PRODUCTS MEETS THE SPECIFICATION OF MAJOR OEMs & HIGHEST STANDARDS OF API, MIL, EUROPEAN AND JAPANESE MANUFACTURERS WHICH CLEARLY INDICATES OUR COMMITMENT TO ADHERE TO LATEST TECHNOLOGICAL DEVELOPMENTS IN THE INDUSTRY. WE HAVE EQUIPMENT BUILDER

APPROVALS FROM VOLVO, RENAULT, MACK, MERCEDES BENZ, MAN, PORSCHE AND VOLKSWAGEN.





WHAT
MAKES
US
DIFFERENT





LUBRICANTS
"Life Without Friction"



SUPPORT:

- SPECIALIZED TECHNICAL CONSULTING.
- INTERNAL ENGINEERING DEPARTMENT.
- PROBLEM SOLVING SKILLS.
- TECHNICAL TRAINING FOR SALES STAFF OF DISTRIBUTORS.
- OPTION FOR TAILOR MADE PRODUCTS.
- PARTICIPATION IN LOCAL EVENTS AND CONDUCTING SEMINARS TO PROMOTE MARKET AWARENESS.



PRODUCTION:

- BEST BASE OILS AND ADDITIVES. (0% RECYCLED BASE OILS)
- STRINGENT QUALITY CONTROL MEASURES ARE TAKEN FOR RAW MATERIALS TO ASSURE THE TOP QUALITY OF OUR PRODUCTS.
- TESTED AND BALANCED FORMULAS FOR PRODUCTION.
- QUALITY CHECKS ON ALL FINISHED PRODUCTS TO ENSURE THAT YOU GET THE FINEST PRODUCTS.



INNOVATION:

- DIRECT CONTACT WITH OEMS.
- STATE OF THE ART LABORATORY FOR CONTINUOUS RESEARCH AND DEVELOPMENT.
- CONTINUOUS ADDITION OF NEW PRODUCTS TO STAY AT FOREFRONT IN THE MARKET.
- HIGHLY EXPERIENCED QUALITY ASSURANCE STAFF.





LAB ANALYSIS





LAB
ANALYSIS

WHERE THE LUBRICANTS OF THE FUTURE ARE DESIGNED

The LAB represents the heart of the company : it is here where our team of experts work together to offer the market the absolute best products in which we take pride.



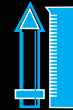
RESEARCH
& Development

THE EIFFEL LUBRICANTS RESEARCH & ANALYSIS LABORATORY IS ONE OF THE BEST EQUIPPED AND MOST SPECIALISED IN UAE FOR THE ADVANCED TESTING AND ANALYSING OF LUBRICANTS AND GREASES. THIS ALLOWS OUR KNOWLEDGE AND EXPERIENCE TO GROW AT AN EXPONENTIAL PACE WITHIN A CONTINUOUSLY EVOLVING MARKET.



TECHNICAL
Assistance

AT EIFFEL LUBRICANTS, WE SOLVE PROBLEMS. TECHNICAL ASSISTANCE IS PROVIDED BY A TEAM OF HIGHLY SKILLED AND EXPERT STAFF. EXPERIENCE AND EXPERTISE HAVE SHOWN THAT PREVENTION IS THE BEST MEASURE, WHICH IS WHY WE AT EIFFEL LUBRICANTS DEDICATE SPACE AND TIME FOR ANALYSIS AND PREVENTIVE ACTIONS, WITH THE AIM OF PREVENTING DOWNTIME AND TROUBLESOME MAINTENANCE COSTS.



SPECIALISED
consulting services

BY MANUFACTURING LUBRICANTS FOR MORE THAN A DECADE WE HAVE GAINED THE ABILITY TO OFFER OUR CUSTOMERS SPECIALISED CONSULTING SERVICES, ASSISTANCE DURING THE SELECTION OF PRODUCTS AND LUBRICATION PLANS AND TAILORED FORMULAS FOR EVERY SPECIFIC REQUIREMENTS.





LAB EQUIPMENTS

Perfect Blend, Great Performance

Eiffel's state-of-the-art R&D center in U.A.E., along with our in depth understanding of the market, have created products that have the perfect blend to globally enhance engine

VISCOMETER @ 100, ASTM D 445-21

VISCOMETER @ 40, ASTM D 445-21

INDUCTIVELY COUPLED PLASMA, ASTM D 4951

FOURIER TRANSFORM INFRA RED SPECTRUM

COLD CRANKING SIMULATOR, ASTM D 5293

FLASH POINT, ASTM D 92

AUTOMATIC PENETROMETER, ASTM D 217

DROPPING POINT, ASTM D566

MECHANICAL GREASE WORKER, ASTM D 217

DENSITOMETER, ASTM D 4052

MANUAL PENETROMETER, ASTM D 217

OIL SEPARATION FROM LUBRICATING GREASE, ASTM 6184

FOUR BALL MACHINE FOR BEARING, ASTM D2596, ASTM D 2266

ROLL STABILITY GOR GREASE, ASTM D 1831-21





MORE THAN
1 000 PRODUCTS
(IN EVERY PACKAGING SOLUTION)

- 🔹 ENGINE OILS
- 🔹 GEAR AND DIFFERENTIAL LUBRICANTS
- 🔹 AUTOMOTIVE TRANSMISSION LUBRICANTS
- 🔹 UNIVERSAL USE LUBRICANTS
- 🔹 HYDRAULIC OILS

- 🔹 INDUSTRIAL OILS
- 🔹 GREASE
- 🔹 ADDITIVES AND COOLANTS





LUBRICANTS

"Life Without Friction"

FIELDS OF APPLICATION

PROVIDING INNOVATIVE SOLUTIONS FOR EVERY SECTOR.

IEFFEL LUBRICANTS IS ACTIVE IN A BROAD RANGE OF SECTORS: AUTOMOTIVE, HEAVY DUTY VEHICLES, MOTORCYCLES, AGRICULTURE, EARTH MOVING, INDUSTRIAL AND MARINE SEGMENTS.

IN TODAY'S EVOLVING MARKET EVERY SECTOR COMES WITH ITS OWN UNIQUE CHALLENGES, IEFFEL LUBRICANTS UNIQUE TRAIT LIES IN PRODUCTION OF LUBRICANTS THAT GENERATE REAL TIME BENEFITS AND TECHNOLOGICAL INNOVATION.



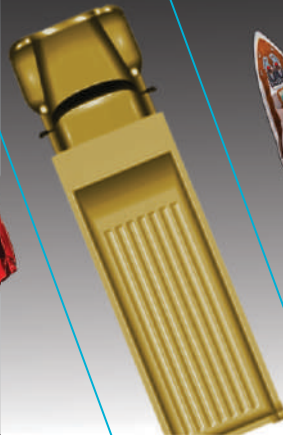
MOTOR CYCLE



AUTOMOTIVE



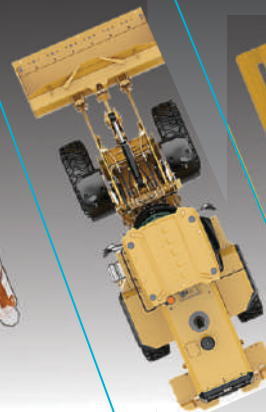
HEAVY DUTY
VEHICLE



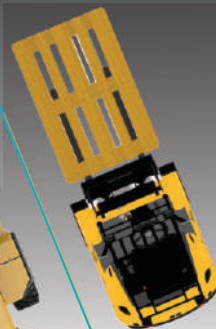
MARINE



EARTH MOVING &
AGRICULTURE



INDUSTRIAL





LUBRICANTS
"Life Without Friction"

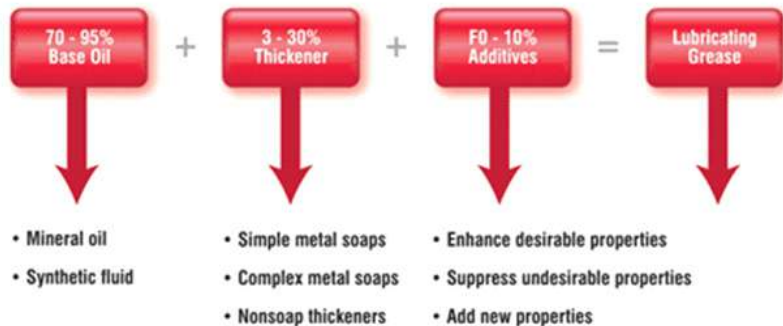
GREASE

GREASE MANUFACTURING:

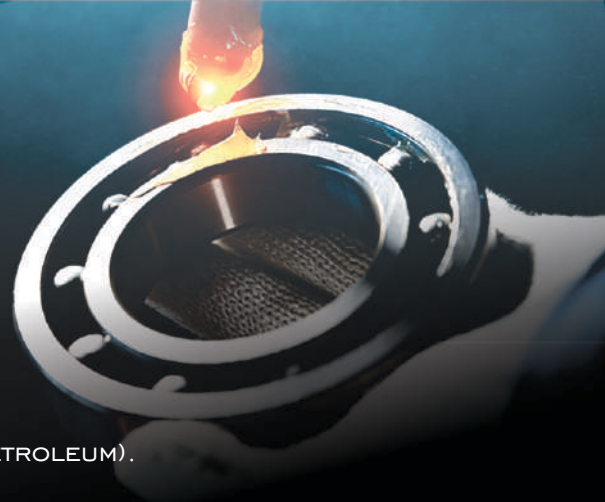
THE AMERICAN SOCIETY FOR TESTING AND MATERIALS (ASTM) DEFINES LUBRICATING GREASE AS: "A SOLID TO SEMIFLUID PRODUCT OF DISPERSION OF A THICKENING AGENT IN LIQUID LUBRICANT. OTHER INGREDIENTS IMPARTING SPECIAL PROPERTIES MAY BE INCLUDED" (ASTM D 288, STANDARD DEFINITIONS OF TERMS RELATING TO PETROLEUM).

GREASE ANATOMY:

AS THIS DEFINITION INDICATES, THERE ARE THREE COMPONENTS THAT FORM A LUBRICATING GREASE. THESE COMPONENTS ARE OIL, THICKENER AND ADDITIVES. THE BASE OIL AND ADDITIVE PACKAGE ARE THE MAJOR COMPONENTS IN GREASE FORMULATIONS, AND AS SUCH, EXERT CONSIDERABLE INFLUENCE ON THE BEHAVIOR OF THE GREASE. THE THICKENER IS OFTEN REFERRED TO AS A SPONGE THAT HOLDS THE LUBRICANT (BASE OIL PLUS ADDITIVES). BY ADDING THE PROPER GREASE TO YOUR MAINTENANCE ROUTINE, YOU GUARANTEE YOUR FACILITY IS OPERATING AT PEAK PERFORMANCE.



NLGI#	ASTM - Worked Penetration	Food Analogy
000	445-475	Ketchup
00	400-430	Applesauce
0	355-385	Brown Mustard
1	310-340	Tomato Paste
2	265-295	Peanut Butter
3	220-250	Vegetable Shortening
4	175-208	Frozen Yogurt
5	130-160	Smooth Paté
6	85-115	Cheddar Cheese Spread



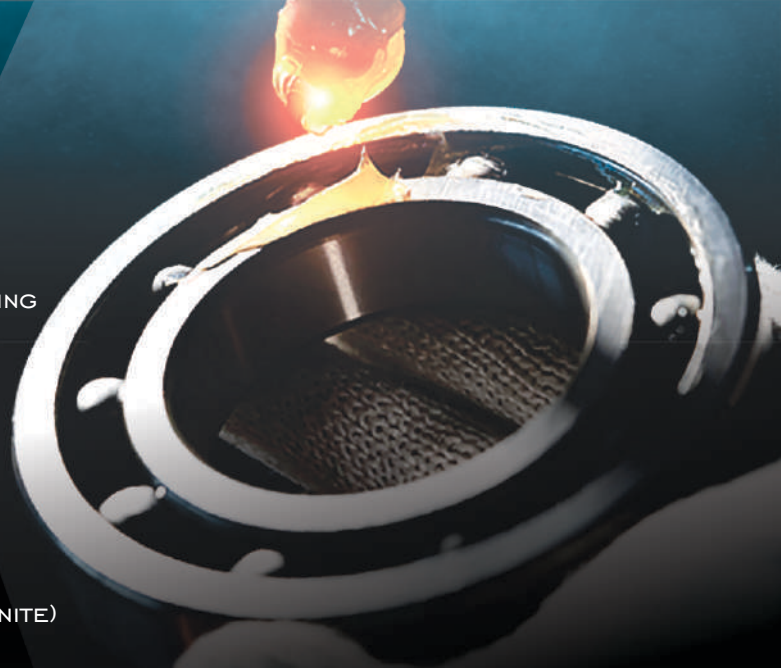


GREASE

AT BURJ EIFFEL INT. LUBRICANTS IND. LLC WE ARE MANUFACTURING FULL RANGE OF LUBRICATING GREASES FOR AUTOMOTIVE AND INDUSTRIAL APPLICATIONS

GREASE PRODUCTS:

1. EIFFEL EXTREME PRESSURE GREASE EP SERIES(LITHIUM)
EP-O, EP-OO, EP-OOO, EP-1, EP-2, EP-3
2. EIFFEL XTREME PROTECT GREASE EP SERIES(LITHIUM COMPLEX)
EP-2, EP-3
3. EIFFEL MULTI PURPOSE GREASE MP SERIES(LITHIUM)
MP2, MP3
4. EIFFEL EXTREME PRESSURE GREASE HT-EP SERIES(BENTONITE)
EP-1, EP-2, EP-3
5. EIFFEL PROTECT GREASE OGL SERIES(GRAPHITE)
OGL-OO, OGL-OOO, OGL-1, OGL 1.5, OGL-3
6. EIFFEL PROTECT MOLY GREASE EP SERIES(MOLYBDENUM DISULFIDE)
EP-O, EP-OO, EP-1, EP-2, EP-3
7. EIFFEL GREASE CA-MP SERIES
MP2, MP3,
8. EIFFEL GREASE CA-EP SERIES
EP2, EP3
9. EIFFEL EXTREME PROTECT GREASE CS-2(CALCIUM SULPHONATE)



PEAK PERFORMANCE



I. EIFFEL EXTREME PRESSURE GREASE EP SERIES(LITHIUM) EP-0, EP-00, EP-000, EP-1, EP-2, EP-3

Eiffel Protect Grease EP series

High Performance Extreme Pressure Greases



Product Data Sheet

Product Description

Eiffel Protect Grease EP series are high performance greases, formulated with lithium based thickeners and extreme pressure additive system to provide extra protection against wear, rusting and water washout. They are available in NLGI grades ranging from 000 to 3, with base oil viscosities ISO VG 150, 320 and 460. They are suitable for most types of Automotive and Industrial applications, including heavy-duty applications where high unit pressures are present. EP 0, 1, 2 & 3 greases are suitable for operating temperatures range from -20°C to 130°C, while EP 000 & 00 greases are suitable for operating temperatures range from -25°C to 120°C.

Features & Benefits

- **Outstanding load carrying capacity** - reduces wear under heavy or shock loading and vibrations, for good equipment reliability and performance.
- **Excellent corrosion protection** - protects bearing surfaces against corrosion, even when the grease is contaminated with water.
- **Good Oxidation and Thermal stability** - protects against deposit formation at high operating temperatures and oil thickening, thus maintains the life and performance of grease.
- **Excellent resistance to water washout** - resists washout of grease in equipment and provides good lubrication even in presence of water.
- **Superior mechanical stability** - resists grease softening in application, where extended mechanical working and high vibrations leads to subsequent loss of lubrication performance and leakage.

Application

- Eiffel Protect Grease EP series are suitable for most types of Automotive and Industrial applications.
- Eiffel Protect Grease EP 00, EP 0 and EP 1 are suitable for centralized lubrication systems and other applications where low temperature performance and effective leakage control are required.
- Eiffel Protect Grease EP 2 and EP 3 are suitable for multipurpose applications in antifriction and plain bearings, bushings and pins, operating under moderate to severe conditions.

Typical Characteristics

Eiffel Protect Grease EP series	Test Method	Units	EP 000	EP 00	EP 0	EP 1	EP 2	EP 3
NLGI Grade	ASTM D 217	---	000	00	0	1	2	3
Thickener Type	---	---	Lithium	Lithium	Lithium	Lithium	Lithium	Lithium
Penetration, Worked @ 25 °C	ASTM D 217	0.1mm	445-475	400-430	355-385	310-340	265-295	220-250
Viscosity @ 40 °C	ASTM D 465	cSt	460	320	160	160	160	160
Dropping Point	ASTM D 566	°C	-	-	190	190	190	190
4-Ball Wear, Scar test	ASTM D 2266	mm	0.5	0.5	0.4	0.4	0.4	0.4
4-Ball Weld Load	ASTM D 2596	Kg	240	240	250	250	250	250

The above figures are typical of blends with normal production tolerance and do not constitute a specification.

For further information, please contact: sales@eiffellubricants.com



PACK SIZE AVAILABLE

250grams

500grams

1kg

15kg

180kg

2. EIFFEL XTREME PROTECT GREASE EP SERIES(LITHIUM COMPLEX) EP-2, EP-3

Eiffel Xtreme Protect Grease EP series

High Performance Lithium Complex Extreme Pressure Greases



Product Data Sheet

Product Description

Eiffel Xtreme Protect Grease EP series are high performance greases, formulated with lithium complex based thickeners, high viscosity and base oils and extreme pressure additive system to provide excellent protection against wear, rusting and water washout. They are available in NLGI grades ranging from 00 to 3 with base oil viscosity of ISO VG 220. They are suitable for most types of Automotive and Industrial applications, including heavy-duty Marine applications where high temperatures, heavy loads and extreme unit pressures are present. EP 2 & 3 greases are suitable for operating temperatures range from -20°C to 140°C.

Features & Benefits

- **Excellent resistance to water washout & Highly adhesive and cohesive grease structure** - resists washout of grease in equipment and provides good lubrication even in presence of water.
- **Excellent Oxidation and Thermal stability** - protects against deposit formation at high operating temperatures and oil thickening, thus maintains the life and performance of grease.
- **Outstanding load carrying capacity** - reduces wear under heavy or shock loading and vibrations, for good equipment reliability and performance.
- **Excellent corrosion protection** - protects bearing surfaces against corrosion, even when the grease is contaminated with water.
- **Outstanding mechanical stability** - resists grease softening in application, where extended mechanical working and high vibrations leads to subsequent loss of lubrication performance and leakage.

Specifications:

Meets & exceeds the following industry specifications

- DIN 51502: KP2N-20/ KP3N-20
- ISO 6743-9: L-XBEB-2/3

Application

Eiffel Xtreme Protect Greases are suitable for most types of Marine, Automotive & Industrial applications.

- EP 2 and EP 3 are suitable for antifriction and plain bearings, bushings and pins, operating under moderate to severe load conditions & in applications with high moisture ingress.

Typical Characteristics

Eiffel Xtreme Protect Grease	Test Method	Units	EP 2	EP 3
NLGI Grade	ASTM D 217	--	2	3
Thickener Type	--	--	Lithium Complex	Lithium Complex
Penetration, Worked @ 25 °C	ASTM D 217	0.1mm	265-295	220-250
Viscosity @ 40 °C	ASTM D 445	cSt	220	220
Dropping Point	ASTM D 566	°C	230 (min)	230 (min)
4-Ball Wear, Scar	ASTM D 2266	mm	0.4	0.4
4-Ball Weld Load	ASTM D 2596	Kg	315	315

The above figures are typical of blends with normal production tolerance and do not constitute a specification.

For further information, please contact: sales@eiffellubricants.com

PACK SIZE AVAILABLE

250grams

500grams

1kg

15kg

180kg



3. EIFFEL MULTI PURPOSE GREASE MP SERIES(LITHIUM) MP2, MP3

Eiffel Protect Grease MP series

High Performance Multipurpose Greases



Product Data Sheet

Product Description

Eiffel Protect Grease MP series are high performance greases, formulated with lithium based thickeners and an ISO VG 150 mineral base stock to provide added protection against wear, rusting and water washout. They are available in NLGI grades 2 & 3, which are suitable for general purpose automotive applications at moderate temperatures and loads. The suitable operating temperature range is from -20°C to 120°C. It does not contain lead or any other heavy metals which are considered harmful to human health and environment.

Features & Benefits

- **Superior load carrying capacity** - reduces wear under moderate loading and vibrations, for good equipment reliability and performance.
- **Extra protection against rust and corrosion** - protects bearing surfaces against corrosion.
- **Good Oxidation and Thermal stability** - protects against deposit formation at high operating temperatures and oil thickening.
- **Good resistance to water washout** - resists washout of grease in equipment operating in wet conditions.
- **Superior structural stability** - resists grease softening, even during extended mechanical working and high vibrations in equipment.
- **Wide Operating Temperature range**

Application

- Eiffel Protect Grease MP series are suitable for general lubrication under normal operating conditions and loads, for all kinds of application in transport, agriculture and off road equipment.
- Suitable for passenger car, light truck, including all kinds of bearings and joints where temperature and loading conditions are normal.
- In applications where heavy or shock loading is involved, extreme pressure greases are preferred.

Typical Characteristics

Eiffel Protect Grease MP series	Test Method	Units	MP 2	MP 3
NLGI Grade	ASTM D 217	—	2	3
Thickener Type	—	—	Lithium	Lithium
Color	Visual	—	Brown	Brown
Texture	Visual	—	Smooth	Smooth
Penetration, Worked @ 25 °C	ASTM D 217	0.1mm	265-295	220-250
Viscosity @ 40 °C	ASTM D 445	cSt	150	150
Dropping Point	ASTM D 566	°C	180 (min)	180 (min)
4-Ball Wear, Scar test	ASTM D 2256	mm	0.6	0.6
4-Ball Weld Load	ASTM D 2596	Kg	220	220

The above figures are typical of blends with normal production tolerances and do not constitute a specification.

For further information, please contact: sales@eiffellubricants.com

PACK SIZE AVAILABLE

250grams

500grams

1kg

15kg

180kg



4. EIFFEL EXTREME PRESSURE GREASE HT-EP SERIES(BENTONITE) EP-1, EP-2, EP-3

Eiffel Protect Grease HT-EP series

High Temperature Clay based - Extreme Pressure Greases



Product Data Sheet

Product Description

Eiffel Protect Grease HT-EP series are high temperature greases, formulated with bentonite clay based thickener and extreme pressure additive system to provide extra protection against wear, rusting and water washout especially in industrial equipment operating under heavy loads and high temperatures. They are available in NLGI grades ranging from 00 to 3 with base oil viscosity of ISO VG 150 & 320. It retains its consistency at high temperatures and provides good storage stability.

Features & Benefits

- **Outstanding Non-melting capability** – protects bearing at very high operating temperatures where conventional soap-based greases fail to provide satisfactory lubrication.
- **Good extreme pressure & anti-wear properties** - protects bearing surfaces against severe wear, even under high load conditions.
- **Excellent Oxidation and Thermal stability** - protects against deposit formation at very high operating temperatures, thus maintains the life and performance of grease.
- **Excellent resistance to water washout** - resists washout of grease in equipment and provides good lubrication even in presence of water.
- **Excellent retention of consistency** – resists grease softening in application, where very high temperatures and mechanical working leads to subsequent loss of lubrication performance and leakage.

Application

Eiffel Protect Grease HT-EP series are suitable for below applications:

- Drying Ovens
- Jaw Crushers
- Kiln cars
- Steel Mills
- Hot Rolling Mills
- Aluminum, Cement, Glass and Rubber plants

Typical Characteristics

Eiffel Protect Grease	Test Method	Units	HT-EP00	HT-EP0	HT-EP1	HT-EP2	HT-EP3
NLGI Grade	ASTM D 217	--	0	0	1	2	3
Thickener Type	--	--	Bentonite Clay	Bentonite Clay	Bentonite Clay	Bentonite Clay	Bentonite Clay
Penetration, Worked @ 25 °C	ASTM D 217	0.1mm	400-430	355-385	310-340	265-295	220-250
Viscosity @ 40 °C	ASTM D 445	cSt	32	160	160	160	160
Dropping Point	ASTM D 566	°C	-	03>	03>	03>	03>
4-Ball Wear, Scar	ASTM D 2266	mm	0.5	4.0	4.0	4.0	4.0
4-Ball Weld Load	ASTM D 2596	Kg	42	52	52	52	52

The above figures are typical of blends with normal production tolerance and do not constitute a specification.

For further information, please contact: sales@eiffellubricants.com

PACK SIZE AVAILABLE

250grams

500grams

1kg

15kg

180kg



5. EIFFEL PROTECT GREASE OGL SERIES (GRAPHITE) OGL-00, OGL-000, OGL-1, OGL 1.5, OGL-3

Eiffel Protect Grease HT-EP series

High Temperature Clay based - Extreme Pressure Greases



Product Data Sheet

Product Description

Eiffel Protect Grease HT-EP series are high temperature greases, formulated with bentonite clay based thickener and extreme pressure additive system to provide extra protection against wear, rusting and water washout especially in industrial equipment operating under heavy loads and high temperatures. They are available in NLGI grades ranging from 00 to 3 with base oil viscosity of ISO VG 150 & 320. It retains its consistency at high temperatures and provides good storage stability.

Features & Benefits

- **Outstanding Non-melting capability** – protects bearing at very high operating temperatures where conventional soap-based greases fail to provide satisfactory lubrication.
- **Good extreme pressure & anti-wear properties** - protects bearing surfaces against severe wear, even under high load conditions.
- **Excellent Oxidation and Thermal stability** - protects against deposit formation at very high operating temperatures, thus maintains the life and performance of grease.
- **Excellent resistance to water washout** - resists washout of grease in equipment and provides good lubrication even in presence of water.
- **Excellent retention of consistency** – resists grease softening in application, where very high temperatures and mechanical working leads to subsequent loss of lubrication performance and leakage.

Application

Eiffel Protect Grease HT-EP series are suitable for below applications:

- Drying Ovens
- Jaw Crushers
- Kiln cars
- Steel Mills
- Hot Rolling Mills
- Aluminum, Cement, Glass and Rubber plants

Typical Characteristics

Eiffel Protect Grease	Test Method	Units	HT-EP00	HT-EP0	HT-EP1	HT-EP2	HT-EP3
NLGI Grade	ASTM D 217	--	0	0	1	2	3
Thickener Type	--	--	Bentonite Clay	Bentonite Clay	Bentonite Clay	Bentonite Clay	Bentonite Clay
Penetration, Worked @ 25 °C	ASTM D 217	0.1mm	400-430	355-385	310-340	265-295	220-250
Viscosity @ 40 °C	ASTM D 445	cSt	32	160	160	160	160
Dropping Point	ASTM D 566	°C	-	03>	03>	03>	03>
4-Ball Wear, Scar	ASTM D 2266	mm	0.5	4.0	4.0	4.0	4.0
4-Ball Weld Load	ASTM D 2596	Kg	42	52	52	52	52

The above figures are typical of blends with normal production tolerance and do not constitute a specification.

For further information, please contact: sales@eiffellubricants.com

PACK SIZE AVAILABLE

250grams

500grams

1kg

15kg

180kg



6. EIFFEL PROTECT MOLY GREASE EP SERIES(MOLYBDENUM DISULFIDE) EP-0, EP-00, EP-1, EP-2, EP-3

Eiffel Protect Moly Grease EP series

High Performance Lithium-Moly based - Extreme Pressure Greases



Product Data Sheet

Product Description

Eiffel Protect Moly Grease EP series are high performance greases, formulated with lithium based thickeners fortified with Molybdenum Disulfide (MoS₂) solid lubrication, high quality base oils and extreme pressure additive system to provide excellent protection against wear, rusting and water washout. They are available in NLGI grades ranging from 00 to 3 with base oil viscosity of ISO VG 460 & 320. They are suitable for most types of Automotive and Industrial applications, including heavy-duty Marine applications where high temperatures, heavy shock loads and extreme unit pressures are present. Moly Grease EP 1, 2, & 3 greases are suitable for operating temperatures range from -30°C to 130°C, while Moly Grease EP 00 & 0 greases are suitable for operating temperatures range from -25°C to 120°C.

Features & Benefits

- **Good resistance to water washout** - provides good lubrication even in presence of water.
- **Excellent Oxidation and Thermal stability** - protects against deposit formation at high operating temperatures and oil thickening, thus maintains the life and performance of grease.
- **Outstanding shock loads carrying capacity** - reduces wear under heavy or shock loading and vibrations, for good equipment reliability and performance.
- **Excellent corrosion protection** - protects bearing surfaces against corrosion, even when the grease is contaminated with water.
- **Outstanding mechanical stability** - resists grease softening in application, where extended mechanical working and high vibrations leads to subsequent loss of lubrication performance and leakage.

Application

Eiffel Protect Moly Grease EP series are suitable for most types of Marine, Automotive & Industrial applications.

- Eiffel Protect Moly Grease EP 00, EP 0 and EP 1 are suitable for heavily loaded centralized lubrication systems and other applications where low temperature performance and effective leakage control are required.
- Eiffel Protect Moly Grease EP 2 and EP 3 are suitable for antifriction and plain bearings, bushings and pins, operating under moderate to severe load conditions & in applications with high shock loads.

Typical Characteristics

Eiffel Protect Moly Grease	Test Method	Units	EP 00	EP 0	EP 1	EP 2	EP 3
NLGI Grade	ASTM D 217	—	00	0	1	2	3
Thickener Type	—	—	Li-Moly	Li-Moly	Li-Moly	Li-Moly	Li-Moly
Penetration, Worked @ 25 °C	ASTM D 217	0.1mm	400-430	355-385	310-340	265-295	220-250
Viscosity @ 40 °C	ASTM D 445	cSt	460	320	320	320	320
Dropping Point	ASTM D 566	°C	—	190	190	190	190
4-Ball Wear, Scar	ASTM D 2266	mm	0.5	0.4	0.4	0.4	0.4
4-Ball Weld Load	ASTM D 2596	Kg	310	315	315	315	315

The above figures are typical of blends with normal production tolerance and do not constitute a specification.

For further information, please contact: sales@eiffellubricants.com

PACK SIZE AVAILABLE

250grams

500grams

1kg

15kg

180kg



7. EIFFEL GREASE CA-MP SERIES

MP2, MP3,

Eiffel Grease Ca-MP 2 & Ca-MP 3

High Performance Calcium based – Multipurpose Greases



Product Data Sheet

Product Description

Eiffel Grease Ca-MP series are high performance greases, formulated with Calcium based thickeners and an ISO VG 150 mineral base stock to provide added protection against wear, rusting and water washout. They are available in NLGI grades 2 & 3, which are suitable for general purpose automotive applications at moderate temperatures and loads. The suitable operating temperature range is from -20°C to 80°C maximum. It does not contain lead or any other heavy metals which are considered harmful to human health and environment.

Features & Benefits

- **Good resistance to water washout** - resists washout of grease in equipment operating in wet conditions.
- **Superior load carrying capacity** - reduces wear under moderate loading and vibrations, for good equipment reliability and performance.
- **Extra protection against rust and corrosion** - protects bearing surfaces against corrosion
- **Good Oxidation and Thermal stability** - protects against deposit formation at high operating temperatures and oil thickening.
- **Superior structural stability** - resists grease softening, even during extended mechanical working and high vibrations in equipment.

Application

- Eiffel Grease Ca-MP series are suitable for general lubrication under normal operating conditions and loads, for all kinds of application in transport, agriculture, marine and off road equipment.
- Suitable for passenger car, light truck, including all kinds of bearings and joints where temperature and loading conditions are normal.
- Not suitable for applications like rolling element bearings & high shock loads equipment.

Typical Characteristics

Eiffel Grease	Test Method	Units	Ca-MP 2	Ca-MP 3
NLGI Grade	ASTM D 217	--	2	3
Thickener Type	--	--	Calcium	Calcium
Color	Visual	--	Brown	Brown
Texture	Visual	--	Smooth	Smooth
Penetration, Worked @ 25 °C, 60 strokes	ASTM D 217	0.1mm	265-295	220-250
Viscosity @ 40 °C	ASTM D 445	cSt	150	150
Dropping Point	ASTM D 566	°C	90 (min)	90 (min)
4-Ball Wear, Scar test	ASTM D 2266	mm	0.65	0.65
4-Ball Weld Load	ASTM D 2596	Kg	210	210

The above figures are typical of blends with normal production tolerance and do not constitute a specification.

For further information, please contact: sales@eiffellubricants.com



PACK SIZE AVAILABLE

250grams

500grams

1kg

15kg

180kg

8. EIFFEL GREASE CA-EP SERIES EP2, EP3

Eiffel Grease Ca-EP series

High Performance Calcium based – Multipurpose Extreme Pressure Greases



Product Data Sheet

Product Description

Eiffel Grease Ca-EP series are high performance greases, formulated with Calcium based thickeners and an ISO VG 320 mineral base stock to provide added protection against wear, rusting and water washout. They are available in NLGI grades 2 & 3, which are suitable for general purpose automotive applications at moderate temperatures and loads. The suitable operating temperature range is from -20°C to 80°C maximum. It does not contain lead or any other heavy metals which are considered harmful to human health and environment.

Features & Benefits

- **Good resistance to water washout** - resists washout of grease in equipment operating in wet conditions.
- **Superior load carrying capacity** - reduces wear under moderate loading and vibrations, for good equipment reliability and performance.
- **Extra protection against rust and corrosion** - protects bearing surfaces against corrosion.
- **Good Oxidation and Thermal stability** - protects against deposit formation at high operating temperatures and oil thickening.
- **Superior structural stability** - resists grease softening, even during extended mechanical working and high vibrations in equipment.

Application

- Eiffel Grease Ca-EP series are suitable for general lubrication under normal operating conditions and loads, for all kinds of application in transport, agriculture, marine and off road equipment.
- Suitable for passenger car, light truck, including all kinds of bearings and joints where temperature and loading conditions are normal.
- Not suitable for applications like rolling element bearings & high shock loads equipment.

Typical Characteristics

Eiffel Grease	Test Method	Units	Ca-EP 2	Ca-EP 3
NLGI Grade	ASTM D 217	--	2	3
Thickener Type	--	--	Calcium	Calcium
Color	Visual	--	Brown	Brown
Texture	Visual	--	Smooth	Smooth
Penetration, Worked @ 25 °C, 60 strokes	ASTM D 217	0.1mm	265-295	220-250
Viscosity @ 40 °C	ASTM D 445	cSt	320	320
Dropping Point	ASTM D 566	°C	90 (min)	90 (min)
4-Ball Wear, Scar test	ASTM D 2266	mm	0.6	0.6
4-Ball Weld Load	ASTM D 2596	Kg	220	220

The above figures are typical of blends with normal production tolerance and do not constitute a specification.

For further information, please contact: sales@eiffellubricants.com

PACK SIZE AVAILABLE

250grams

500grams

1kg

15kg

180kg





LUBRICANTS
"Life Without Friction"

OUR NOTABLE CLIENTS

GOODYEAR

خاتصاحب سايكس
Khansaheb Sykes

BILAL
GENERAL TRANSPORT

ADMAC

synergy
Fueling The Future

ADEEMA
Group

BELHASA
ENGINEERING & CONTRACTING CO. LLC



LUBRICANTS
"Life Without Friction"

OUR NOTABLE CLIENTS



ELSEWEDY
ELECTRIC

**SUDATRAF
SUDAN**



**NATIONAL
ELECTRICITY
CORP-SUDAN**

Afghan Wireless
Connecting Afghanistan



افغان بیس
ارتباط دهنده افغانستان



PETROBASH MULTI ACTIVITIES Co.LTD
FUCHS SUDAN



LUBRICANTS

"Life Without Friction"

Eiffel Office Address in Dubai:

Office No. 1303, Saheel 1 Bldg Al Nahda 1,
Dubai, UAE

Tel: +971-4-2598745

Fax: +971-4-2598746

Eiffel Manufacturing Plant In Sharjah:

Industrial Area 10, Po Box : 7480,
Sharjah, Uae

Tel: +971 -6-5347815

Fax: +971 -6-5347814

Eiffel Manufacturing plant in UAQ:

PLOT 11 BLOCK 6, UMM AL THAOOB,
UMM AL-QUWAIN, UAE.

P.O BOX: 40498

Helpline: +97142598745

Email: sales@eiffellubricants.com

www.eiffellubricants.com

