







## ALZI SKIN & HAIR ANALYSER AP12

**AP12 is an innovative device for skin and scalp analysis**, ergonomically and compactly designed. With its two easily detachable lenses, you can examine your clients' skin and scalp with great detail and precision. It also features multiple lighting modes to allow for complete and accurate assessment.

Its **11-inch screen UHD LCD** provides a detailed display of the condition of the surface being examined. With the AP12, you can perform analysis accurately and efficiently and provide better service to your customers.

-  Ultraviolet light.
-  White light.
-  Polarised light .
-  Image magnification x50 / x200 .
-  Image and video recording and reproduction.
-  16G memory.



1  
**Skin lens**



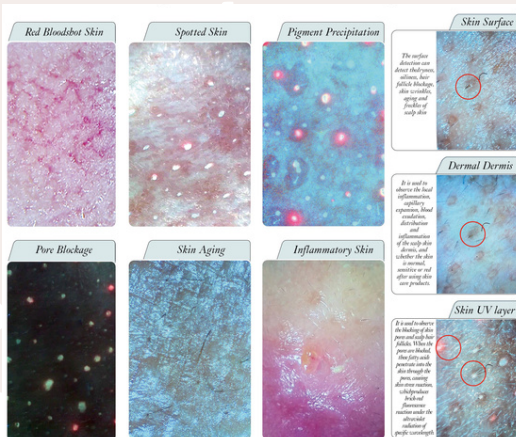
2  
**Scalp lens**



## ASPECTS OF TRI-SPECTRAL ANALYSIS

- **White light** (epidermal skin detection layer): Observation of dry and oily scalp, clogged hair follicles and scalp ageing.
- **Ultraviolet light (ultraviolet layer):** Skin and scalp, early detection of the possibility of scalp infection based on the principle that porphyrin-like substances metabolised by epifolliculitis will turn red under ultraviolet light.
- **Polarised light (mesoderm detection):** lower skin layer and lower scalp layer, detection of scalp redness, pigmentation and allergic inflammation of the scalp.

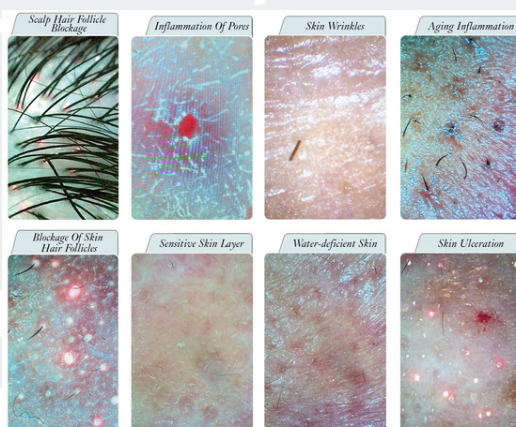
### Lens ALZI SKIN x50



- ✓ Reddening of the skin.
- ✓ Skin blemishes.
- ✓ Wrinkles.
- ✓ Pigment precipitation.
- ✓ Obstruction of the pores.
- ✓ skin ageing
- ✓ Inflamed skin.



### Lens ALZI HAIR x200



- ✓ Obstruction of the follicles.
- ✓ Inflammation of the pores.
- ✓ Blockage of scalp follicles.
- ✓ Sensitive skin layer.
- ✓ Dehydrated scalp skin.
- ✓ Skin ulceration.

