



Singwear®

SPRING 2024 - Part II

Sustainable Innovation 

INDEX

Sample with sustainable yarn

1. Recycle Nylon
2. Lenzing Eco-vero
3. Anti-bacterial Yarn
4. Bio-degradable Elastane

Dyeing effect

1. Natural Dyeing
2. Dip Dyeing
3. Tie Dyeing
4. Acid Wash

Other content

1. Build-in shelf bra
2. Bagged out seam
/Invisible sewing
3. Lurex Yarn



**Features:**

- V-neck line
- Back closure
- Adjustable straps
- Adjusted foam cup

Composition:

Nylon / Elastane



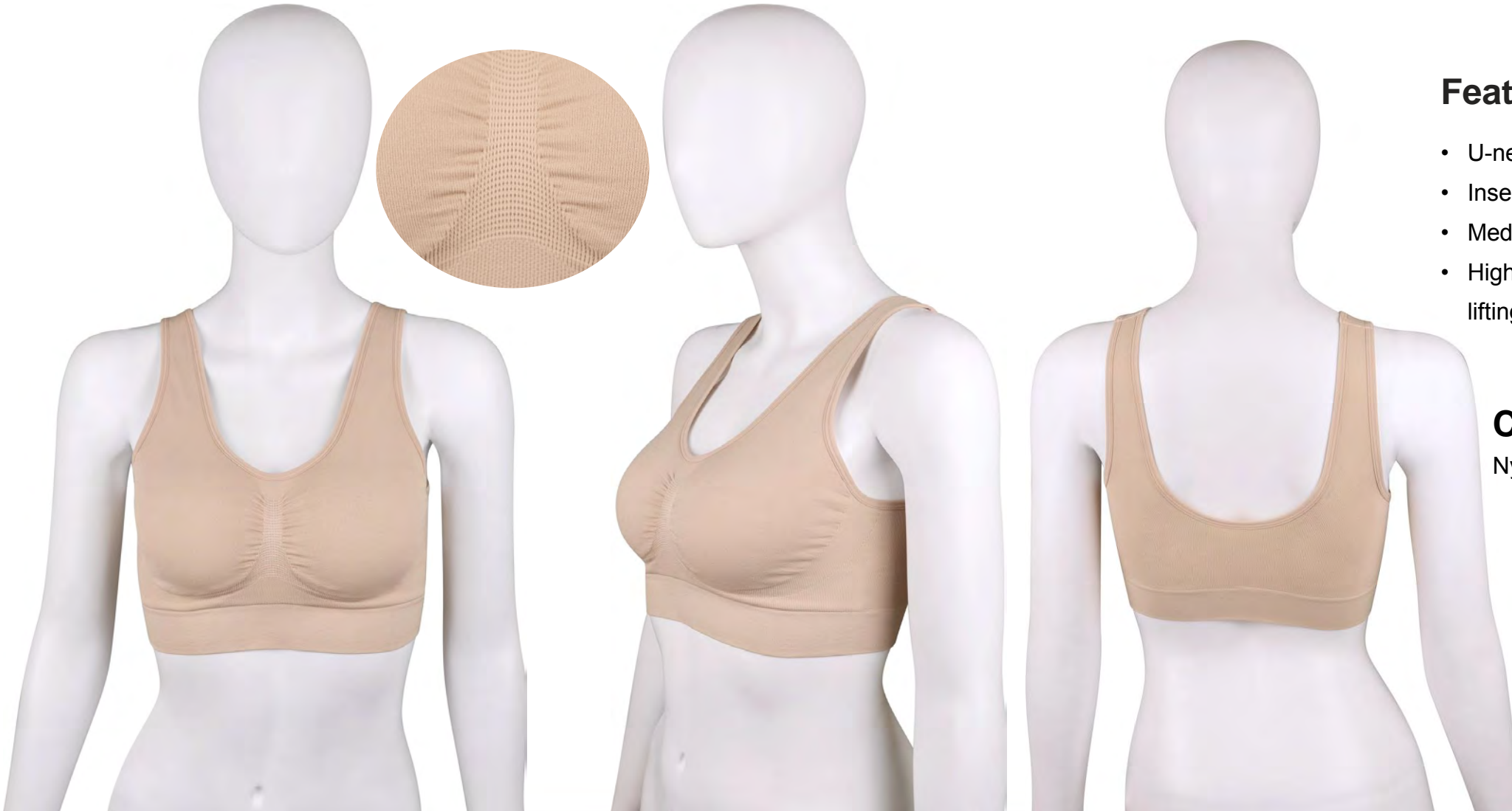
**Features:**

- Push-up bra
- Rib texture
- Adjusted foam cup
- Adjustable straps
- High bottom band with high elastic

Composition:

Recycle Nylon / Nylon / Elastane



**Features:**

- U-neck line
- Insertded foam cup(removable)
- Medium impact
- High elastic pattern provides more lifting without high impact need

Composition:

Nylon / Elastane





Features:

- Bagged out /Invisible sewing
- U-neck line
- Racer back
- Removable foam cup
- Various pattern
- Medium impact

Composition:

Recycle Nylon / Nylon / Polyester/
Elastane



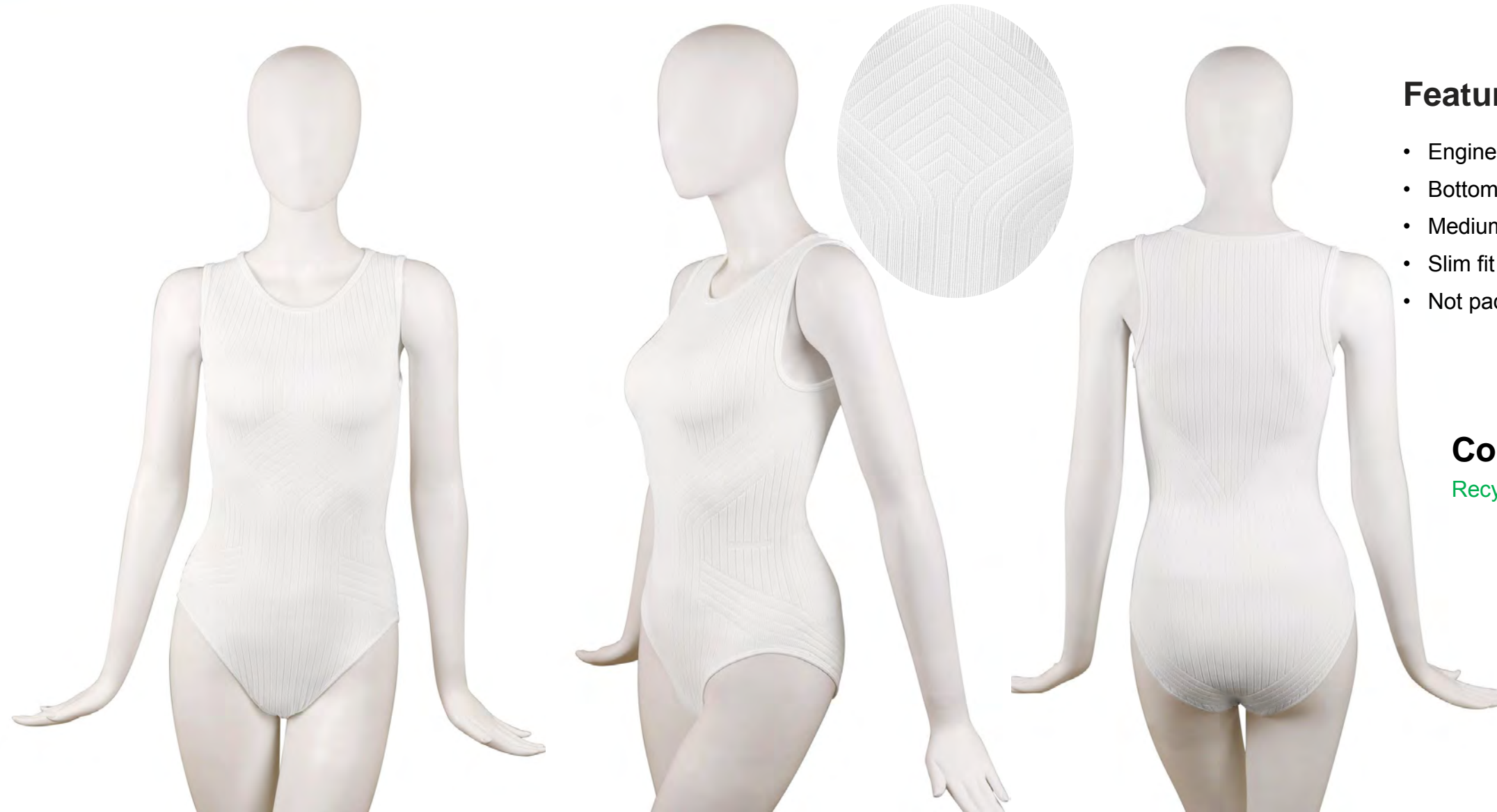
**Features:**

- Rich Engineering rib texture(supportive)
- Gorgeous outlook

Composition:

Recycle Nylon / Nylon / Elastane



**Features:**

- Engineering rib texture(supportive)
- Bottom closure
- Medium impact
- Slim fit
- Not padded

Composition:

Recycle Nylon / Nylon / Elastane





Features:

- U-neck
- Rib texture
- Single layer (non padded)
- 2 hook closure(3 level of adjustment)
- Adjustable straps

Composition:

Recycle Nylon / Nylon / Elastane



**Features:**

- V-neck
- Rib texture
- Single layer (padded bra)
- 2 hook closure(3 level of adjustment)
- Adjustable straps

Composition:

Recycle Nylon / Nylon / Elastane





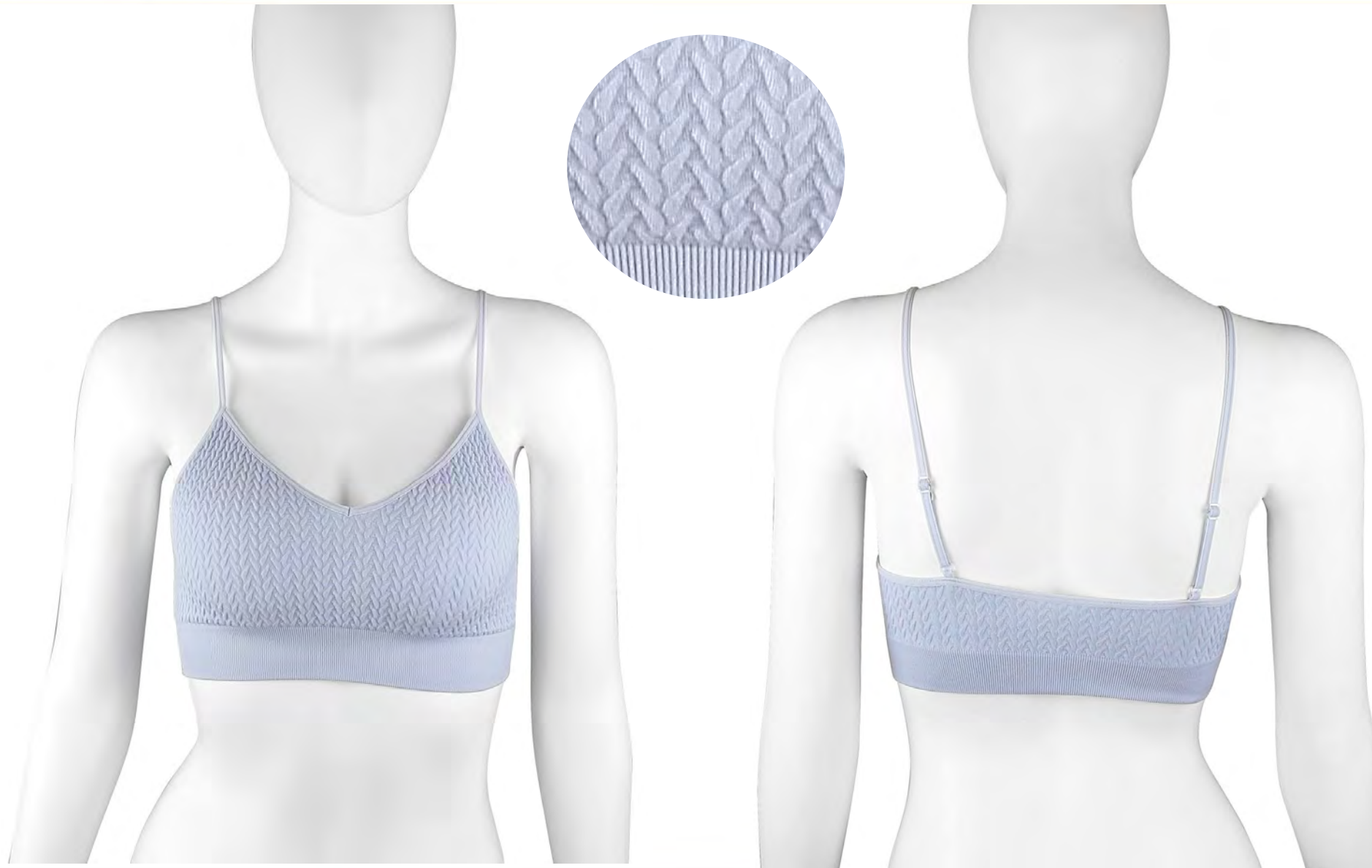
Features:

- Pull-up bra
- Adjustable straps
- Double layer at front & build-in foam cup
- Rib texture (include waist band)

Composition:

Nylon / Elastane





Features:

- Flowery texture detail
- Non padded
- Narrow straps(**adjustable**)
- Square back
- Single layer(**thinner not transparent**)
- Softer hand feel

Composition:

Lenzing Ecovero / Nylon / Elastane





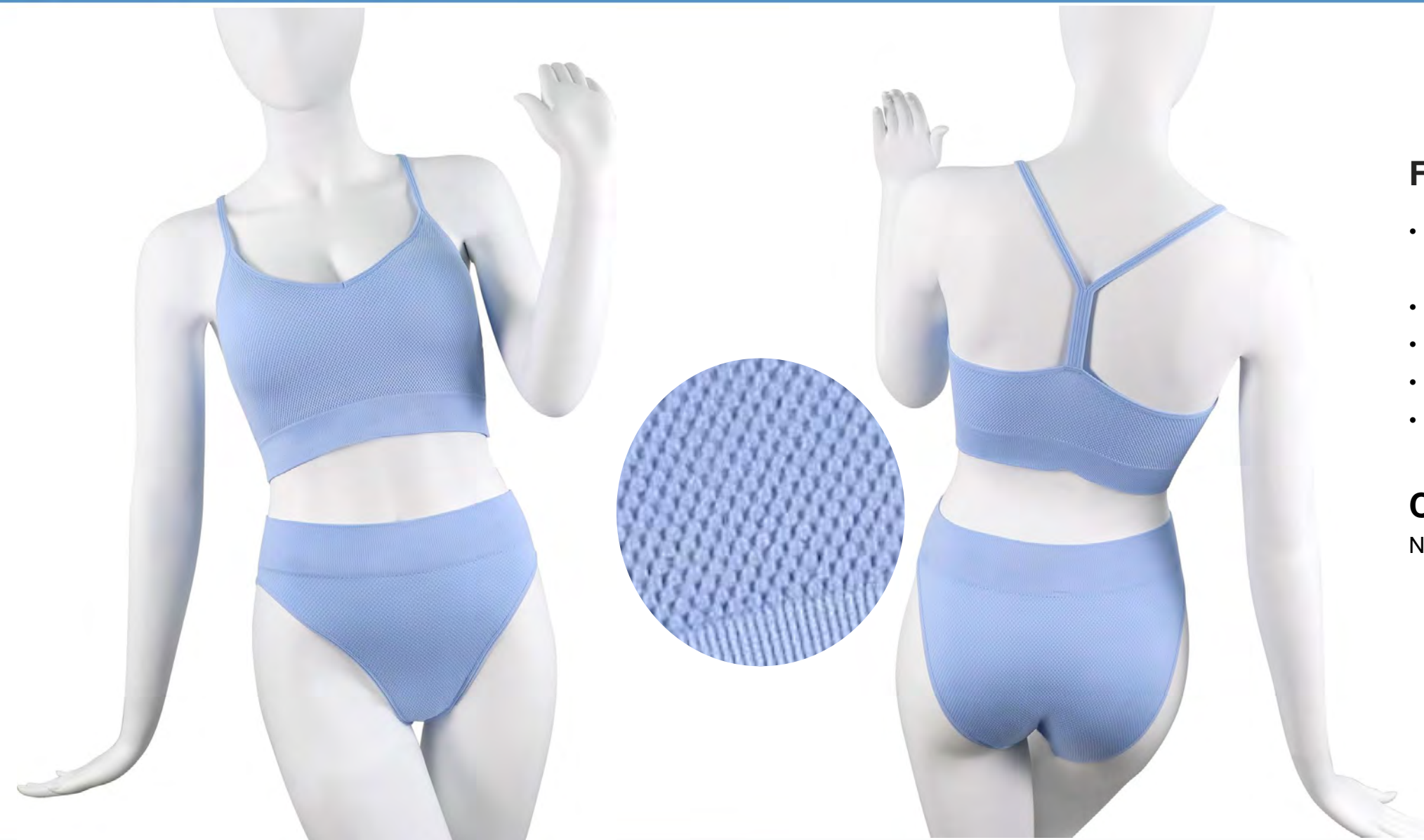
Features:

- Bagged out /Invisible sewing at neck
- U-neck & square back
- Rib texture
- Padded(**removable**)
- Adjustable straps

Composition:

Recycle Nylon / Nylon / Elastane





Features:

- Double layer at front & removable foam cup
- Point pattern texture
- Wider waist band(supportive)
- Racer back
- Medium impact

Composition:

Nylon / Elastane





Features:

- Double layer at front a& removable foam cup
- Rib texture
- Wider waist band(supportive)
- Racer back
- Medium impact

Composition:

Nylon / Elastane



**Features:**

- Double layer at front a& removable foam cup
- Pique texture
- Widther waist band(supportive)
- Racer back
- Medium impact

Composition:

Nylon / Elastane



**Features:**

- Double layer at front & removable foam cup
- Point pattern texture
- U-neck & Racer back
- Medium impact
- Wider waist band(supportive)

Composition:

Nylon / Elastane



**Features:**

- Double layer at front & removable foam cup
- Rib texture
- U-neck & Racer back
- Medium impact
- Wider waist band(supportive)

Composition:

Nylon / Elastane



**Features:**

- Double layer at front & removable foam cup
- Pique pattern
- U-neck & Racer back
- Medium impact
- Wider waist band(supportive)

Composition:

Nylon / Elastane



**Features:**

- Natural Dyeing
- Non padded
- Strapy back detail
- Covered with fishing net layer(top)
- Brife with open hole detail

Composition:

Nylon / Elastane





Features:

- Colorful /Rainbow wavy line
- Rib texture
- Double layer at front & removable foam cup
- Racer back with adjustable straps
- Softer hand feel

Composition:

Nylon / Polyester / Elastane



**Features:**

- Push-up bra
- Strapy back detail
- Heat seal logo
- Padded(not removable)
- Gorgerous pattern detail
- Softer hand feel

Composition:

Nylon / Polyester / Elastane





Features:

- Plain pattern
- Padded(**not removable**)
- Half coverage bra
- Square back with adjustable straps
- Softer hand feel

Composition:

Nylon / Elastane



**Features:**

- Halter top & backless
- Rib texture
- V-neck
- Double layer at front & removable foam cup
- Softer hand feel

Composition:

Nylon / Cotton / Elastane





Features:

- U-neck and back
- Higher bottom band(supportive)
- Softer hand feel
- Texture at side & center provide lifting effect
- Medium impact

Composition:

Lenzing Ecovero / Nylon / Elastane



**Features:**

- Rich pattern texture
- Loose fit
- Softer hand feel
- Single layer(not padded)

Composition:

Nylon / Elastane



**Features:**

- Rib texture
- Knitting logo
- Padded(not removable)
- Back closure with adjustable straps)

Composition:

Nylon / Polyester / Elastane



**Features:**

- Rich pattern texture
- Single layer non padded
- Medium impact

Composition:

Recycle Nylon / Nylon / Elastane



**Features:**

- Point pattern texture
- Single layer
- U-neck front & back
- Elastic texture at center

Composition:

Lenzing Ecovero / Nylon /
Elastane



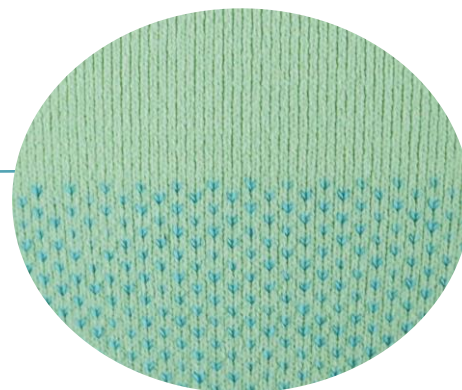
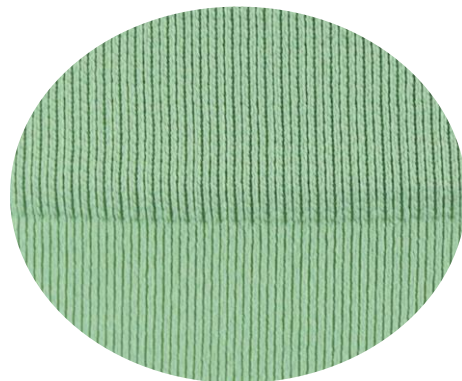
**Features:**

- Plain pattern

Composition:

Recycle Nylon / Nylon / Cotton /
Elastane





Features:

Plain pattern

Softer hand feel

Anti-bacterials Nylon made with

Mugwort plant. able to anti bacteria 99%
of (**E. coli** / **Candida albicans** /
MRSA & ETC).

Composition:

Anti-bacterial yarn /

Nylon / Cotton / Elastane /





Features:

- Rich open hole pattern increase breathability(recommend wear late spring)
- High waist band with medium compression

Composition:

Nylon / Elastane



**Features:**

- Rich various rib texture(supportive)
- Pocket(24cm deep both side)
- High waist band with high elastic
- Medium impact

Composition:

Nylon / Elastane



**Features:**

- Square pattern texture
- Single layer not padded (not transparent)
- Back closure
- High Elastic texture at center
- Medium impact

Composition:

Lenzing Ecovero / Nylon / Elastane





Features:

- Waffle pattern texture
- U-neck & square back
- Adjustable straps
- Double layer at front & removable foam cup
- Softer hand feel

Composition:

Recycle Nylon / Nylon / Elastane





(zoom in for more detail)

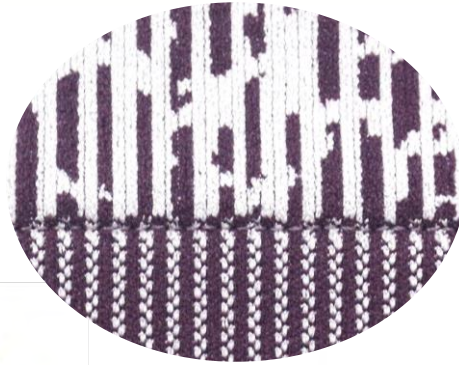
Features:

- Double layer at front & not padded
- Racer back
- Round neck
- Larger armhole

Composition:

Recycle Nylon / Nylon / Elastane /
Lurex Yarn





Features:

- U-neck & racer back
- Gorgeous texture detail(include
- waist band)
- Double layer at front & removable foam cup
- Softer hand feel

Composition:

Nylon / Polyester / Elastane





Features:

- Acid wash effect
- Rib texture
- Adjustable straps
- Double layer at front with removable foam cup

Composition:

Recycle Nylon / Nylon / Elastane





Features:

- Acid Wash
- Rich texture detail
- Single layer
- Racer back (adjustable straps)

Composition:

Nylon / Elastane





Features:

- Rib texture
- Colorful line detail
- Single layer not padded
- V-neck & square back
- Adjustable straps
- Medium impact

Composition:

Recycle Nylon / Nylon / Elastane





(example image of build-in shelf bra layer)



Features:

- Narrow straps(5mm width)
- Build-in shelf bra layer
(6cm height & 36.5cm width)
- Regular fit

Composition:

Bamboo Viscose / Cotton / Nylon /
Elastane





(example image of build-in shelf bra layer)



Features:

- Narrow straps(5mm width)
- Build-in shelf bra layer (6.5cm height & 35.5cm width)
- Regular fit

Composition:

Nylon / Elastane



**Features:**

- Tie Dyeing effect
- Rib texture
- Loose fit
- Non padded

Composition:

Nylon / Elastane





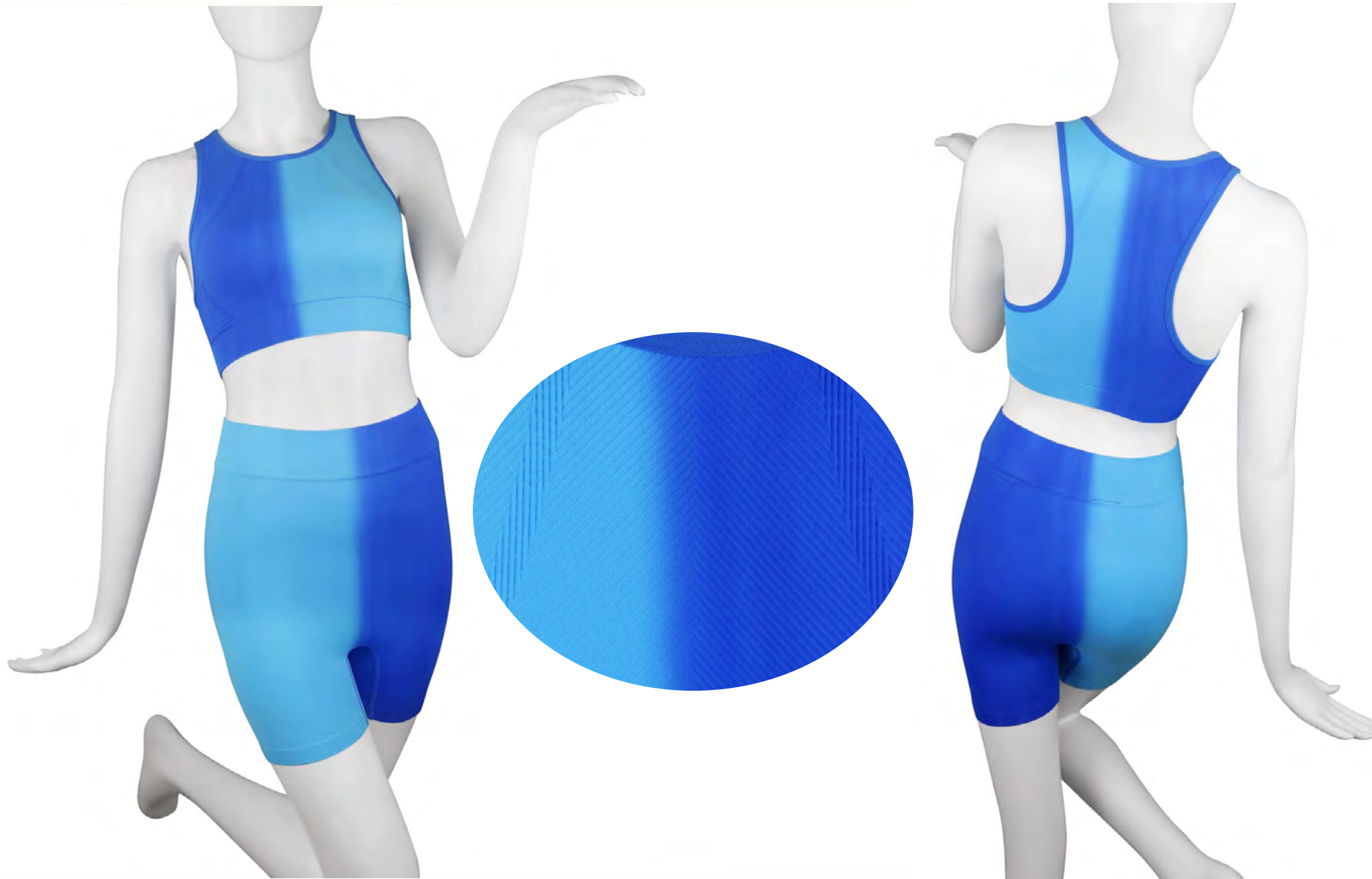
Features:

- Wavy pattern texture
- Single layer non padded
- U-neck & square back
- Slim fit
- Low impact
- Adjustable straps

Composition:

Recycle Nylon / Nylon / Elastane



**Features:**

- Dip Dyeing
- Rib texture
- Racer back
- Larger waist band
- Double layer at front & non padded

Composition:

Recycle Nylon / Nylon / Elastane





Features:

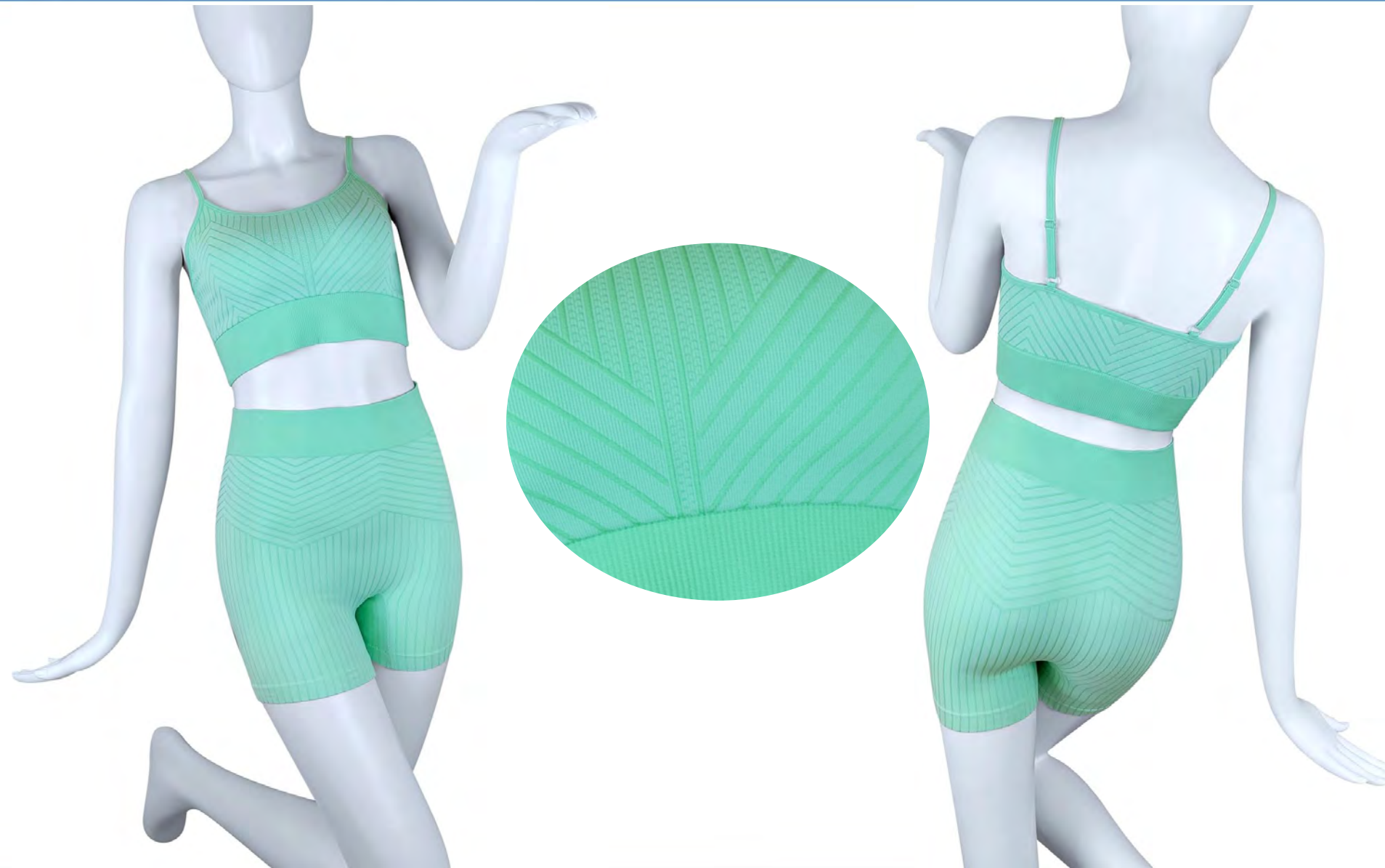
- Heather finish of Lenzing Ecovero
- Round neck & square back
- Padded with High coverage foam cup(removable)
- Adjustable straps
- Elastic texture at gore and side
- Medium impact

Composition:

Lenzing Ecovero / Bio-degradable

Elastane / Elastane





Features:

- Nylon 66
- Rib texture weaved with bright yarn
- U-neck & square back
- Larger waist band
- Single layer(not padded)

Composition:

Nylon / Elastane / Cotton



**Features:**

- Acid Wash effect
- Rib texture
- Larger waist band with knitted logo
- Non padded

Composition:

Recycle Nylon / Nylon / Polyester /
Elastane





Features:

- Natural Dyeing
- Bagged out seam/ Invisible sewing
- Double layer at front & removable foam cup
- 1*1 Rib texture in center front gore

Composition:

Nylon / Elastane



**Features:**

- Rib texture
- Shorts with high waist band of medium compression
- Medium fit & impact

Composition:

Nylon / Elastane





Features:

- Dip Dyeing effect
- Racer back
- Straps with multi Colour
- Shorts with high waist band provide medium compression
- Non padded

Composition:

Nylon / Elastane



Singwear®

Thank You

Hello
March

