



PT. MITRA SYAILENDRA KREASINDO



BUSINESS ——— **PROPOSAL**

We Are Specializing in Trading and Supply of
Commodity from Indonesia with the support of
a Professional Team

2023



About Company

Starting his career in 2017 from CV MKS. supplier needs materials in the area sector Cilegon industry. along with the development of modern technology we participate in self-development, building wider relationships.

With the formation of PT MITRA SYAILENDRA KREASINDO. We hope to be able to build a commitment to serving consumers with the best efforts.

We place the professional competence of the managers, good in skills, expertise, selection of products and services that are served.

With this digitalization era, we are ready to compete in quality as well quantity as well as various other commercial aspects efficiently and effectively with competitors in the field.

We also participate in developing self-sufficiency at the local level and domestically by building joint partnerships for play a role in the development of the company with a broad scope wider globally

VISION & MISSION

Become a Trading Company and
Trusted and professional supplier
at home and abroad



VISION



MISSION

Build a trading business efficiency oriented effectiveness and reach customer needs properly.



**COCONUT & SAWDUST CHARCOAL
BRIQUETTE**

PRODUCT SPECIFICATION



100 %COCONUT SHELL CHARCOAL BRIQUETTES CUBE SHAPE FOR SHISHA (DIAMOND) EUROPEAN STANDARD QUALITY FOB PRICE (NEGOTIABLE)

• CALORIE VALUE 7000 - 7200 KILO CALORIE • TOTAL MOISTURE 7 % • ASH CONTENT 2 – 2.5 % • FIXED CARBON 84 % • BURNING TIME 2 HOURS • WHITE CREAM ASH • EUROPEAN STANDARD • SMDS CERTIFICATE • 10 KG PACKAGING CARTOON (EXCLUDE INNER BOX)



COCONUT SHELL CHARCOAL FOB PRICE (NEGOTIABLE)

• CALORI VALUE 6500 – 7000 KILO CALORI • TOTAL MOISTURE 10 % • ASH CONTENT 3 % • FIXED CARBON 85 % • BURNING TIME 2 HOURS • WHITE CREAM ASH • MIDDLE EAST & ASIA STANDARD • SMDS CERTIFICATE • 50 KG PACKAGING



COCONUT SHELL & SAWDUST BRIQUETTE FOR BBQ FOB PRICE (NEGOTIABLE)

• CALORI VALUE 6500 – 7000 KILO CALORI • TOTAL MOISTURE 10 % • ASH CONTENT 3 % • FIXED CARBON 85 % • BURNING TIME 2 HOURS • WHITE CREAM ASH • MIDDLE EAST & ASIA STANDARD • SMDS CERTIFICATE • 10 KG PACKAGING MASTER BOX WITH INNER PLASTIC

AGRICULTURAL PRODUCTS

MEK





FRESH AVOCADO

PRODUCT DESCRIPTION :

OFFERING FRESH AVOCADO FOR GRADE A (HIGH QUALITY). THE FLESH HAS A THICK SIZE AND SOFTER FLESH TEXTURE. THE AVOCADO BUTTER HAS A FAIRLY DISTINCTIVE TASTE. SWEETER THAN REGULAR AVOCADO, BUT HAS A LITTLE SAVORY TASTE. WHEN IT IS COMPLETELY RIPE, THE AVOCADO SKIN WILL CHANGE FROM GREEN TO BROWN. THIS THICK AVOCADO BUTTER FLESH MAKES IT LESS ROTTEN THAN OTHER TYPES OF AVOCADO. THIS IS BECAUSE THE TEXTURE OF THE MEAT IS MORE SOLID AND NOT RUNNY. WHEN IT'S ALREADY PERFECT RIPENESS, THE SEEDS ARE SEPARATED FROM THE FLESH. THE CULTIVATION TYPE IS CONVENTIONAL.

PRICE OF PRODUCT (USD PRICE OR FOB PRICE) :

NEGOTIABLE

PRODUCT ORIGIN :

INDONESIA

KEY SPECIFICATIONS/SPECIAL FEATURES :

- > CULTIVATION TYPE: CONVENTIONAL
- > WEIGHT: 200 TO 500 GRAMS PER PIECE. CUSTOMIZED SIZES ARE WELCOME
- > GRADE: A (HIGH QUALITY)
- > MATURITY: 70% TO 85% OR NEGOTIABLE
- > COLOR: GREEN
- > TASTE: SWEETER THAN REGULAR AVOCADO, BUT HAS A LITTLE SAVORY TASTE
- > SHAPE: ROUND SLIGHTLY OVAL
- > SPECIES: P. AMERICANA
- > SEASONALITY: ALL YEAR SUPPLY
- > PEAK SEASON: NOVEMBER TO FEBRUARY
- > LOW SEASON: MARCH TO OCTOBER
- > PLACE OF ORIGIN: INDONESIA
- > PORT OF LOADING: TANJUNG PRIOK, JAKARTA / SOEKARNO-HATTA INTERNATIONAL AIRPORT
- > PAYMENT TERM: T/T 50% DOWN PAYMENT AND 50% AFTER COPY BILL OF LADING OR 100% L/C AT SIGHT
- > DELIVERY TIME: SHIPMENT WITHIN 2 TO 3 WEEKS (FOR THE FIRST-TIME BUYERS)
- > DOCUMENTS: ORIGINAL BILL OF LADING/AIRWAY BILL, COMMERCIAL INVOICE & PACKING LIST, PHYTOSANITARY CERTIFICATE, CERTIFICATE OF ORIGIN

MINIMUM ORDER SIZE AND PACKAGING DETAILS :

- > PACKING WITH CORRUGATED CARDBOARD BOX/PLASTIC CRATE. 4 TO 10 KG PER CARTON/CRATE, ACCORDING TO BUYER REQUIREMENT.
- > MINIMUM ORDER QUANTITY BY SEA IS 20FT REEFER CONTAINER
- > MINIMUM ORDER QUANTITY BY AIR IS 1 MT



FRESH CAVENDISH BANANA

PRODUCT DESCRIPTION :

OFFERING FRESH CAVENDISH BANANA FOR GRADE A. THE TASTE IS SWEET FRUIT TASTE SLIGHTLY SOUR, FRAGRANT, SOFT TEXTURE. THE SHAPE TENDS TO BE CURVED AND BLUNT AT THE EDGES. THE WEIGHT IS APPROXIMATELY 140 TO 150 GRAMS PER PIECE, THICK SKIN. CUSTOMIZED SIZES ARE WELCOME. THE CULTIVATION TYPE IS CONVENTIONAL.

PRICE OF PRODUCT (USD PRICE OR FOB PRICE) :

NEGOTIABLE

PRODUCT ORIGIN :

INDONESIA

KEY SPECIFICATIONS/SPECIAL FEATURES :

- > CULTIVATION TYPE: CONVENTIONAL
- > WEIGHT: APPROXIMATELY 140 TO 150 GRAMS PER PIECE, THICK SKIN. CUSTOMIZED SIZES ARE WELCOME
- > GRADE: A
- > MATURITY: 70 TO 80% OR NEGOTIABLE
- > COLOR: FRESH GREEN, YELLOW ON RIPENING; YELLOWISH-WHITE FLESH
- > TASTE: SWEET FRUIT TASTE SLIGHTLY SOUR, FRAGRANT, SOFT TEXTURE
- > CLUSTER: THE CLUSTER MUST BE 5 TO 7 PIECES ONLY, ACCORDING TO BUYER REQUIREMENT
- > SHAPE: TENDS TO BE CURVED AND BLUNT AT THE EDGES
- > SCIENTIFIC NAME: MUSA ACUMINATA
- > SEASONALITY: ALL YEAR SUPPLY
- > PLACE OF ORIGIN: INDONESIA
- > PORT OF LOADING: TANJUNG PRIOK, JAKARTA / SOEKARNO-HATTA INTERNATIONAL AIRPORT
- > PAYMENT TERM: T/T 50% DOWN PAYMENT AND 50% AFTER COPY BILL OF LADING OR 100% L/C AT SIGHT
- > DELIVERY TIME: SHIPMENT WITHIN 2 TO 3 WEEKS (FOR THE FIRST-TIME BUYERS)
- > DOCUMENTS: ORIGINAL BILL OF LADING/AIRWAY BILL, COMMERCIAL INVOICE & PACKING LIST, PHYTOSANITARY CERTIFICATE, CERTIFICATE OF ORIGIN

MINIMUM ORDER SIZE AND PACKAGING DETAILS :

- > PACKING WITH PERFORATED CARTONS OF STABLE CORRUGATED BOARD WITH PERFORATED PLASTIC FILM LINING. 5 TO 18.5 KG PER CARTON, ACCORDING TO BUYER REQUIREMENT. BEFORE BEING PACKED IN THE CARTON BOX, THE BANANAS ARE WASHED WITH CLEAN WATER AND FUNGICIDE LIQUID
- > MINIMUM ORDER QUANTITY BY SEA IS 20FT REEFER CONTAINER
- 1.---> MINIMUM ORDER QUANTITY BY AIR IS 2 MT



FRESH MANGOSTEEN

Product Description :

Offering Fresh Mangosteen for Grade AAA (High Quality). The taste is sweet juicy and mildly fragrant. The shape is globular. The weight is about 60 to 110 grams per piece (Medium Size). 115 to 165 gram per piece (Large Size). Customized weight is welcome. The cultivation type is conventional.

Price of Product (USD price or FOB price) :

Negotiable

Product Origin :

Indonesia

Key Specifications/Special Features :

- > Cultivation Type: Conventional
- > Weight: 60 to 110 gram per piece (Medium Size). 115 to 165 grams per piece (Large Size). Customized weights are welcome
- > Grade: AAA (High Quality)
- > Maturity: 70 to 95% or Negotiable
- > Maturity Stage:
 - > Maturity Stage-1 (mostly at 104 days after anthesis day after harvest (DAA), fruit skin color was yellowish-green with a few red specks)
 - > Maturity Stage-2 (at 106 DAA, fruit skin color was reddish yellow with red specks spread evenly near sepals)
 - > Maturity stage-3 (at 108 DAA, fruit skin color was reddish yellow with red specks all over)
 - > Maturity Stage-4 (at 110 DAA, fruit skin color was evenly red)
- > Color: Thick skin with dark purple color; white flesh
- > Taste: Sweet juicy and mild fragrant
- > Shape: Globular
- > Scientific Name: *Garcinia Mangostana* L.
- > Seasonality: All year supply
- > Peak Season: November to March
- > Low Season: April to October
- > Place of Origin: Indonesia
- > Port Of Loading: Tanjung Priok, Jakarta / Soekarno-Hatta International Airport
- > Payment Term: T/T 50% Down Payment and 50% after copy Bill of Lading OR 100% L/C At Sight
- > Delivery Time: Shipment within 2 to 3 weeks (for the first-time buyers)
- > Documents: Original Bill of Lading/Airway Bill, Commercial Invoice & Packing List, Phytosanitary Certificate, Certificate of Origin

Minimum Order Size and Packaging Details :

- > Packing with a vented plastic crate or corrugated cardboard box. 5-10 kg per carton, according to buyer requirement. Before being packed in the carton box, the mangosteens are washed with clean water
- > Minimum Order Quantity by Sea is 20ft reefer container
- > Minimum Order Quantity by Air is 1 MT



FRESH RAMBUTAN

PRODUCT DESCRIPTION :

OFFERING FRESH RAMBUTAN FOR GRADE AAA (HIGH QUALITY). THE TASTE IS SWEET. THE SHAPE IS OVATE. THE WEIGHT IS APPROXIMATELY 20 TO 30 GRAMS PER PIECE. CUSTOMIZED SIZES ARE WELCOME. THE CULTIVATION TYPE IS CONVENTIONAL.

PRICE OF PRODUCT (USD PRICE OR FOB PRICE) :

NEGOTIABLE

PRODUCT ORIGIN :

INDONESIA

KEY SPECIFICATIONS/SPECIAL FEATURES :

- > CULTIVATION TYPE: CONVENTIONAL
- > WEIGHT: 20 TO 30 GRAMS PER PIECE. CUSTOMIZED SIZES ARE WELCOME
- > GRADE: AAA (HIGH QUALITY)
- > MATURITY: 70 TO 80% OR NEGOTIABLE
- > COLOR: BRIGHT RED SKIN WITH GREEN HAIR; WHITE FLESH
- > TASTE: SWEET
- > SHAPE: OVATE
- > SCIENTIFIC NAME: NEPHELIUM LAPPACEUM L.
- > SEASONALITY: ALL YEAR SUPPLY
- > PEAK SEASON: NOVEMBER TO FEBRUARY
- > LOW SEASON: MARCH TO OCTOBER
- > PLACE OF ORIGIN: INDONESIA
- > PORT OF LOADING: TANJUNG PRIOK, JAKARTA / SOEKARNO-HATTA INTERNATIONAL AIRPORT
- > PAYMENT TERM: T/T 50% DOWN PAYMENT AND 50% AFTER COPY BILL OF LADING OR 100% L/C AT SIGHT
- > DELIVERY TIME: SHIPMENT WITHIN 2 TO 3 WEEKS (FOR THE FIRST-TIME BUYERS)
- > DOCUMENTS: ORIGINAL BILL OF LADING/AIRWAY BILL, COMMERCIAL INVOICE & PACKING LIST, PHYTOSANITARY CERTIFICATE, CERTIFICATE OF ORIGIN

MINIMUM ORDER SIZE AND PACKAGING DETAILS :

- > PACKING WITH A CORRUGATED CARDBOARD BOX. 2 TO 12 KG PER CARTON, ACCORDING TO BUYER REQUIREMENT. BEFORE BEING PACKED IN THE CARTON BOX, THE RAMBUTANS ARE WASHED WITH CLEAN WATER
- > MINIMUM ORDER QUANTITY BY SEA IS 20FT REEFER CONTAINER
- 1. ---> MINIMUM ORDER QUANTITY BY AIR IS 1 MT



BIOMASS ENERGY



WOOD PELLET

Wood pellet diameter varies from 6 - 8 mm and length 10-40 mm. It has 4800 Kcal/kg of Gross Calorific Value and <7% of moisture. We provide wood pellet non EN Plus

Please contact us for more information on our Lab Test Report.



WOOD CHIPS

Wood Chip is a type of renewable alternative fuel that is more environmental friendly (Bio energy) and to be used as raw material for producing wood pulp..



RICE HUSK PELLET

Wood Pellet and Rice husk pellet is a kind of biomass material pellet. Both made from raw material wood, sawdust and rice husk or rice hull. Pellet make with presser process with pellets machine that works with the high pressure. They can be used as fuel for power generation, burner machine, commercial or residential heating and cooking. Caloric value up to 3700 kal/g and have excellent year-round availability.

AESTHETIC BATHROOMS



*Syailendra
Kreasi*
MEK

CHECK MORE
INFORMATION :



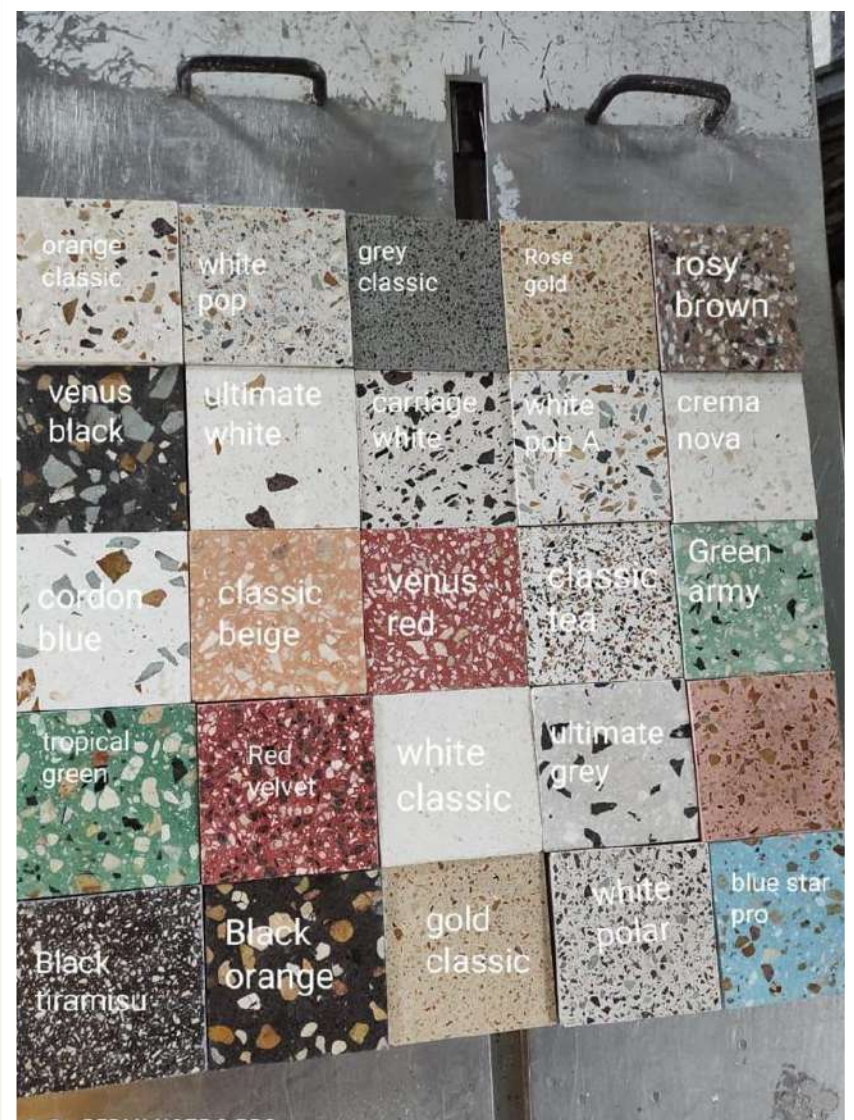
*Syalendra
Kreasi*





*Syalendra
Kreasi*





Syailendra Kresni



*Syailendra
Kreasi*



*Syailendra
Kreasi*
MEK

CHECK MORE
INFORMATION :



*Syailendra
Kreasi*
MEK



*Syailendra
Kreasi*
MEK

Mitra Syailendra Kreasindo

SEA OF PARADISE

INSPIRING LIFE



dried seafood

We are one of the largest producers in the world for Chirimen (ちりめん), a species of Baby Anchovy fish, that is naturally processed by sun drying. Other products are Seasoned dried Shimaaji (しまあじ), dried Himego (ひめご), and dried Flying Fish Roe (とびこ).

All raw material procurement, handling and processing steps are managed by our facilities along the Northern Coast of Java Island (Dried Anchovy), West Coast of Sulawesi Island and West Coast of Papua Island (Dried Flying Fish Roe).



Anchovy
(*Stolephorus commersonii lacepede*)



Dried Indiana Anchovy
Himego
(*Stolephorus indicus*)



Dried Trevally Smooth
Shimaaji
(*Selaroides leptolepis*)



Flying Fish
(*Parexocoetus brachypterus*)



frozen fish

KML has the ability to produce a wide variety of Sea Caught and Farm Raised fish from the abundant Indonesian waters and extensive network of farm. The advantage we have is our ability to do direct procurement of all these raw material resources.



Yellowfin Tuna
(*Thunus albacares*)

Red Snapper
(*Lutjanus malabaricus*)



Loin



Saku



Cube



Steak



Chunk



Ground

KML also produce value-added products **Super Frozen Tuna**. Tuna caught, processed and frozen at -45°C, that's reflected in the naturally vibrant, deep red color the Tuna recovers upon defrosting.



Super Frozen - Saku



Super Frozen - Slice



Super Frozen - Hazai

Pinjalo
(*Pinjalo pinjalo*)



Red Bass
(*Lutjanus bohar*)



Grouper
(*Epinephelus* sp)



Emperor
(*Lethrinus* sp)



Barramundi
(*Lates calcarifer* sp)



Sweet Lips
(*Plectorhynchus* sp)



King Fish
(*Scomberomorus* Sp)



Parrot Fish
(*Scaridae* sp)



Skip Jack
(*Katsuwonus pelamis*)



Barracuda
(*Sphyraena* sp)



Farm Raised



Cat Fish
(*Clarias fuscus*)



Milk Fish
(*Chanos chanos*)



Tilapia
(*Oreochromis* sp)



Pangasius
(*Pangasius* sp)

frozen cephalopods

Our leading Cephalopods product is Octopus. We collect raw material directly from the source through our procurement network of processing plants where it is inspected and immediately processed. Our plants can also produce value added cooked and raw octopus to fit your requirement.



Octopus
(*Octopus vulgaris*)



Flower Shape



Ball Shape



Cut Raw



Whole Cooked



Leg Cooked



Cut Cooked



Slice Cooked



Baby Octopus



Squid Loligo
(*Loligo vulgaris*)



Fillet Block



Sushi - Fillet



Sushi - Sugata



Sushi - Tentacle



Cuttle Fish
(*Sepia sp*)



Whole Cleaned



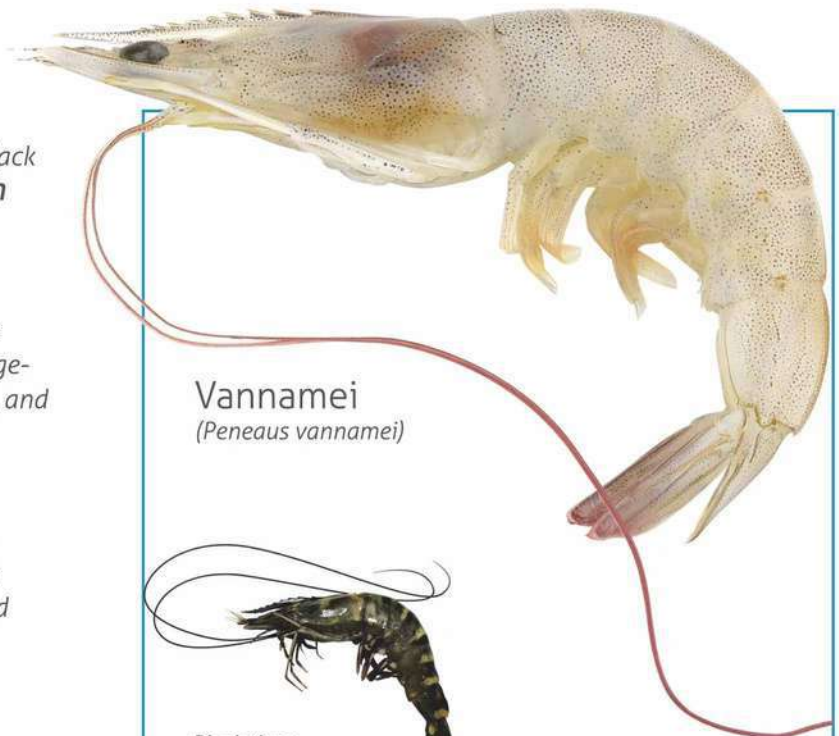
Ring Cleaned

frozen shrimp

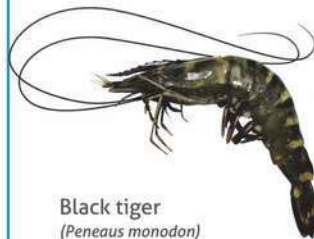
The Frozen shrimp we produce are **Farm Raised** White Vannamei and Black Tiger. We also produce wild **Sea Catch** shrimp including White, Pink, Flower, Banana, Black Pink, Krosok, etc.

Product forms including Raw and value added Cooked. Our procurement management system starts at the farm and sea, and gives us extra control of the freshness, quality and safety of each batch

All products are processed in company owned facilities in compliance with the highest quality processing standard and distributed worldwide.



Vannamei
(*Peneaus vannamei*)



Black tiger
(*Peneaus monodon*)



White Shrimp
(*Peneaus indicus*)



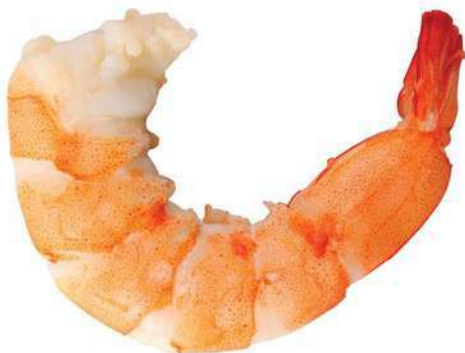
Krosok
(*Peneaus esculentus*)



Pink
(*Peneaus affinis*)



Flower
(*Peneaus spp*)



Cooked Peeled Deveined Tail On (CPDTO)



Raw Headless Shell On (Raw HSLO)



Cooked Ez Peel



Raw Ez Peel



Raw Peeled Undeveined (Raw PUD)



Raw Peeled Deveined (Raw PD)



Nobashi



Butterfly Peeled Deveined Tail On



Skewer Peeled Deveined Tail On (Skewer PDTO)



Skewer Peeled Deveined (Skewer PD)

pasteurized crab meat

Our Fresh Pasteurized and ready to eat Crab meat is produced from the wild caught Blue Swimming Crab species obtained from Indonesian waters. Through our commitment of total quality management in the procurement system, the company is able to produce a full range of high quality Crab meat products that are served in Pasteurized Steel Can and Pasteurized Plastic Cup.

Canning



Colossal



Jumbo



Super Lump



Regular



Special



Claw Meat



Blue Swimming Crab
(Portunus Pelagicus)

Plastic Cup



Colossal



Jumbo



Super Lump



Regular



Special



Claw Meat

Crab Cakes



Premium



Special



Claw Meat

worldwide seafood

KML also implements the global sourcing procurement system that enables the company to collect Fish raw material accross the world.

Finish Products are exported worldwide to well known supermarkets and food service distributors. Our Finish Product is also available to be labeled or packed under KML brands or Customer's brand.



Snow Crab
(*Chionoecetes opilio*)



Frozen Leg Meat



Frozen Leg Butterfly



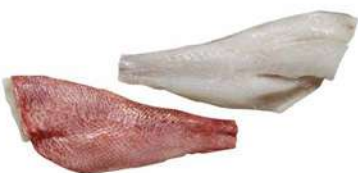
Frozen Block



Frozen Claw Meat



Red Fish
(*Sebastes norvegicus*)



Natural Cut



Mackerel
(*Scomber scombrus*)



Natural Cut
(Salted & Shimesaba)



Portion Cut
(Salted & Shimesaba)



Capelin
(*Malotus villosus*)



Dried Frozen Female



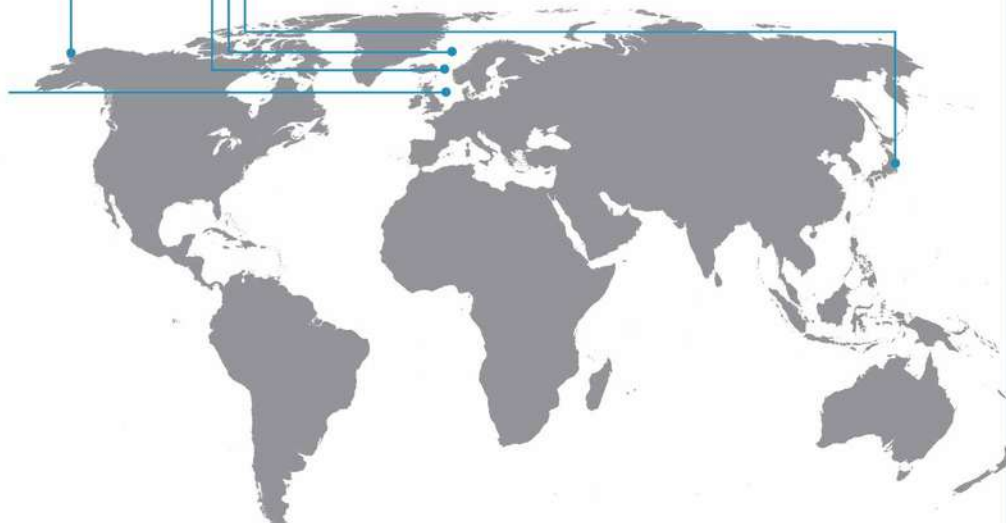
Chum Salmon
(*Oncorhynchus keta*)



Portion Cut



Slice Cut - Kiri



fish meat pasta (surimi)

We produce a full range of Surimi based products. With our fully automated production lines and wide range of ingredients, we can produce any number of shapes and flavor profiles to satisfy your requirement.

Block Frozen Surimi is the base ingredient. We control the quality and supply of raw material through our own catching boats, then process the Block Frozen Surimi and the finished products in our facilities.

Raw Material



Golden Treadfin Bream
(*Nemipterus virgatus*)



Big Eye Snapper
(*Priacanthus macracanthus*)



Sulphur Goatfish
(*Upeneus sulphureus*)



Ponyfish
(*Pentapion longimanus*)



Frozen Block Surimi

GEL STRENGTH

SA Grade (700-Up)

AA Grade (500-Up)

A Grade (300-500)

MOISTURE

74 - 77

BRIGHTNESS

76 - 80

WHITENESS

> 40

Fish Powder



Fish Oil



MODEL: SMK9
18-22 Pcs/Kg



MODEL: SMK10



MODEL SMK11



II - BAKED TYPE (NO OIL)

MODEL: BMK3
40-50 Pcs/Kg



MODEL: BMK5
40-50 Pcs/Kg



MODEL: BMK4
40-50 Pcs/Kg



III - FRIED TYPE (WITH OIL)

MODEL: FMK3S
25-30 Pcs/Kg



MODEL: FSMK3S
50-60 Pcs/Kg



MODEL: FSMK3M
40-50 Pcs/Kg



MODEL: FSMK5
10-12 Pcs/Kg



MODEL: FSMK5M
100-200 Gram/Piece



MODEL: FSMK5B
150-250 Gram/Piece

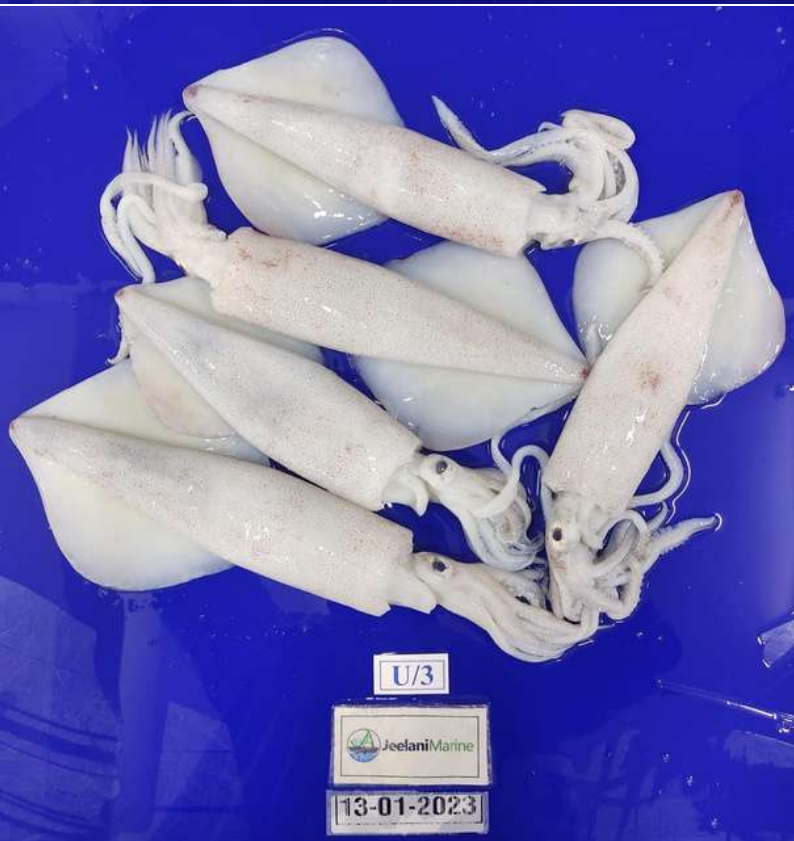


MODEL: FSMK9
40-50 Pcs/Kg



MODEL: FSMK9S
65-75 Pcs/Kg









frozen vegetable

KELOLA is expanding to the Frozen Vegetable business as an additional assortment of Food Products produced. Edamame, Okra and Sweet Potato are the main products that come into some specification of finish products offered to the customer.

Edamame (枝豆)



Edamame



Mukimame



Edatsuki



Okra



Okra - Slant Cut



Okra - Slice Cut



Green Bean



Green Bean - Medium Cut



Green Bean - Small Cut



Sweet Potato (スイートポテト)



Diamond Cut



Slice Cut



Stick Cut



Powder



Frozen Block Pasta



Ubiyaki - Casava



Ubiyaki - Banana



Ubiyaki - Coconut

ROSE WATER

- 2023 / 2024 -



Written By
skgroup.id

+62 812 1991 4274 | +43 699 19266 791

info_msk@skgroup.id | msk@skgroup.id

ABOUT US

Hydrosols, also known as hydrolate, floral water or distillates, are water processed by plant steam which has various benefits



Picture 1.1

Uses of rosewater

Rose water was first created in Persia during the Sasanid Empire.

After the Romans discovered the various uses of rose water for the body, rose water became a valuable trading commodity at that time.

One of the famous female figures who likes to use rose water for her beauty care is Queen Cleopatra.

For facial and body skin care, she is used to bathing using pure rose water. This custom was later imitated by women in Egypt, who used rose water to cleanse their skin and to keep their skin youthful.





Picture1.2

ABOUT OUR PROJECT

Hydrosols are essential waters consisting of water left over from the steam distillation of plants or herbs. They dissolve in water and have a lighter scent than essential oils. They are considered as ideal additives to water-soluble toners, masks, lotions, shampoos and other cosmetics. They are usually used as a spray for linen and iron. Hydrosol can be used directly on the skin without dilution.

OUR MISSION

- Rose Hydrosol is considered a superior additive in soap making and for facial and skin care. Add this Rose Essential Hydrosol to handmade lotions, soaps, hair care products, linen sprays, facial products and more. Apply into the aqueous phase of the formula.

OVERVIEW

Rose hydrosol is the aromatic water that remains after steam distillation of roses. While hydrosols have the same properties as essential oils, they are much more concentrated. Thanks to its high concentration of antioxidants, rose hydrosol has many potential benefits for the skin.

MSK

FLOWER



Sample Product

Located in the Java area of Indonesia
production: 2400 - 3000 liters/month
packaging: 20 liters



we can accept any refining process other than rose raw materials according to your request, with the availability of the raw materials you specify



Certificate of Analysis



Result of Analysis | Page 2 of 3

RESULT OF ANALYSIS

Laporan Hasil Pengujian : SIG.LHP.VII.2021.083737

No.	Parameter	Unit	Result		Limit Of Detection	Method
			Simple	Duplo		
1	Etanol	mg / L	Not detected	Not detected	2.8	18-6-4/MU/SMM-SIG (GC Head space)
2	As	mg / L	Not detected	Not detected	0.008	18-13-1/MU/SMM-SIG (ICP OES)
3	Hg	mg / L	Not detected	Not detected	0.004	18-13-1/MU/SMM-SIG (ICP OES)
4	Cd	mg / L	Not detected	Not detected	0.00011	18-13-1/MU/SMM-SIG (ICP OES)
5	Pb	mg / L	Not detected	Not detected	0.009	18-13-1/MU/SMM-SIG (ICP OES)
6	Tembaga	mg / L	Not detected	Not detected	0.04	18-13-1/MU/SMM-SIG (ICP OES)
7	ALT	colony / mL	2.2×10^6	1.3×10^6	-	ISO 21149 : 2017
8	Kapang Khamir	colony / mL	<10	<10	-	ISO 16212 : 2017
9	Staphylococcus aureus	/ 0.1 mL	Negative	Negative	-	ISO 22718 : 2015
10	Pseudomonas aeruginosa	/ 0.1 mL	Negative	Negative	-	ISO 22717 : 2015

PT. Saraswanti Indo Genetech
Jl. Rasamala No. 20, Taman Yasmin, Bogor Jawa Barat 16113.
Tel. +62 251 7532348 Hotline. +62 821 11 516 516.
www.siglaboratory.com

The results of these tests relate only to the sample(s) submitted.
This report shall not be reproduced except in full context,
without the written approval of PT. Saraswanti Indo Genetech

MSK

FLOWER

Certificate of Analysis



Result of Analysis | Page 3 of 3

RESULT OF ANALYSIS

Laporan Hasil Pengujian : SIG.LHP.VII.2021.083737

No.	Parameter	Unit	Result		Limit Of Detection	Method
			Simplo	Duplo		
11	Escherichia coli	/ mL	Negative	Negative	-	18-7-34/MU/SMM-SIG
12	Candida Albicans	/ 0.1 mL	Negative	Negative	-	ISO 18416 : 2015
13	Berat Jenis	g / mL	0.9997	0.9996	-	SNI 01-2891-1992 point 17.2
14	Indeks Bias	-	1.3332	1.3332	-	18-11-82/MU/SMM-SIG
15	Rasa	-	Tidak berasa	Tidak berasa	-	SNI 01-2891- 1992 point 1.2
16	Warna	-	Tidak berwarna	Tidak berwarna	-	SNI 01-2891- 1992 point 1.2
17	Bau	-	Normal	Normal	-	SNI 01-2891- 1992 point 1.2
18	pH	-	4.12	4.11	-	SNI 01 - 2891 - 1992, point 16
19	Optical Rotation	%	+0.190	+0.190	-	18-11-114/MU/SMM-SIG

Bogor, 07 Juli 2021
PT. Saraswanti Indo Genetech



Dwi Yulianto Laksono, S.Si
GM Laboratorium

PT. Saraswanti Indo Genetech
Jl. Rasamala No. 20, Taman Yasmin, Bogor Jawa Barat 16113.
Tel. +62 251 7532348 Hotline. +62 821 11 516 516.
www.siglaboratory.com

The results of these tests relate only to the sample(s) submitted.
This report shall not be reproduced except in full context,
without the written approval of PT. Saraswanti Indo Genetech

MSK

FLOWER

Certificate of Analysis



Result of Analysis | Page 2 of 3

RESULT OF ANALYSIS

Laporan Hasil Pengujian : SIG.LHP.VII.2021.088887

3.11. Other Information / Keterangan lain	: -
3.11.1. No Notifikasi	: -
3.11.2. No Pengajuan	: -
3.11.3. No Registrasi	: -
3.11.4. No Principal Code	: -
3.12. Date of Received / Diterima	: July 14, 2021
3.13. Date of Analysis/ Tanggal Uji	: July 15, 2021 - July 21, 2021
3.14. Type of Analysis/ Jenis Uji	: Terlampir
IV. Result / Hasil Uji	

Next page 3 / Halaman selanjutnya 3

PT. Saraswanti Indo Genetech
Jl. Rasamala No. 20, Taman Yasmin, Bogor Jawa Barat 16113.
Tel. +62 251 7532348 **Hotline**. +62 821 11 516 516.
www.siglaboratory.com

The results of these tests relate only to the sample(s) submitted.
This report shall not be reproduced except in full context,
without the written approval of PT. Saraswanti Indo Genetech

MSK

FLOWER

Certificate of Analysis



Result of Analysis | Page 3 of 3

RESULT OF ANALYSIS

Laporan Hasil Pengujian : SIG.LHP.VII.2021.088887

No.	Parameter	Unit	Result	Limit Of Detection	Method
1	ALT	colony / mL	<10	-	ISO 21149 : 2017

Bogor, 21 Juli 2021
PT. Saraswanti Indo Genetech



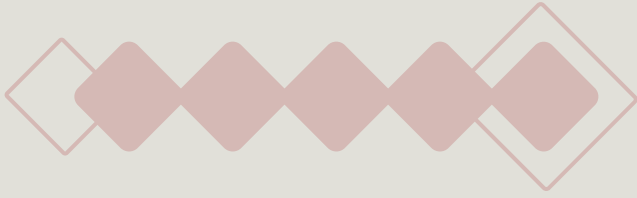
Dwi Yulianto Laksono, S.Si
GM Laboratorium

PT. Saraswanti Indo Genetech
Jl. Rasamala No. 20, Taman Yasmin, Bogor Jawa Barat 16113.
Tel. +62 251 7532348 Hotline. +62 821 11 516 516.
www.siglaboratory.com

The results of these tests relate only to the sample(s) submitted.
This report shall not be reproduced except in full context,
without the written approval of PT. Saraswanti Indo Genetech

MSK

FLOWER



Contac Us :

PT. MITRA SYAILENDRA KREASINDO
MANUFACTURER - EXPORT - DISTRIBUTION



+43 699 - 1926 - 6791 (Rita)

+62 812 - 1991 - 4274 (elan)

+62 812 - 8787 - 5168 (amir)



msk@skgroup.id

info_msk@skgroup.id

MSK

FLOWER





Let's Connect With Us!

PT. MITRA SYAILENDRA KREASINDO

- 📞 RITA +43 699 1926 6791
- 📞 ANNAS +62 821 113 44423
- 📞 AMIR +62 812 8787 5168
- 📞 ELAN +62 812 1991 4274
- 📞 ZUL +62 813 5282 2349
- ✉️ INFO_MSK@SKGGROUP.ID

📍 Jl. Bagendung Link. Pabuaran No.13, RT/RW.01/06,
Ciwedus, Kec. Cilegon, Kota Cilegon, Banten 42418

THANK YOU

Hopefully we can work together
to produce even more valuable
business relationship.

we have registered in

