



[www.detaymold.com](http://www.detaymold.com)

MOLD MAKER

# Hakkımızda & About us

Detay Kalıp 2006 yılında plastik, metal enjeksiyon ve kompozit kalıpları ( smc, bmc ) imalatı konusunda çeşitli firmalara hizmet vermek için İkitelli OSB' de kurulmuştur. Firmamız bu tarihten itibaren gelişen teknolojiyi yakından takip ederek, koşulsuz müşteri memnuniyetini hep ön planda tutarak ve kaliteden ödün vermeyerek müşteri portföyünü genişletmeye başlamıştır. Genişlemenin sonucu olarak 2020 yılında artan üretim hacmi ve genişleyen enjeksiyon makineleri parkuru sebebiyle Hadımköy bölgesinde 3000 m2 kapalı, toplam 6000 m2'lik yeni üretim tesisine taşınmıştır. Firmamız genel olarak beyaz eşya, otomotiv, elektrikli küçük ev aletleri, savunma sanayi sektörlerine kozmetik görünüş parçaları başta olmak üzere, plastik ve metal tüm parçalarının 500mmx500mm'den 2000mmx1200mm'ye ( 1ton- 14ton ) kadar kalıp imatları yapmaktadır. Ayrıca 170ton - 1080ton arası çeşitli tonajlardaki plastik enjeksiyon makinelerimiz ile müşterilerimize hizmet vermekteyiz.

Firmamız tasarımdan üretime kadar uygun fiyat politikası ile kalite, estetik ve müşteri memnuniyetini ön planda tutarak, kalifiye ve eğitimli çalışan kadrosu ile Türkiye ve dünyanın önde gelen firmalarına sürekli hizmet vermeyi amaçlamaktadır.

“DETAY MOLD” has been established 2006, in European Istanbul OSB İkitelli Industrial Area; in order to produce plastic injection items , molding technologies and compound mold service (SMC, BMC) for certain corporations. From our establishing on, we have been following up the advancements in modern technology meanwhile focusing on customer satisfaction and with no loss in quality and accordingly our customer portfolio has grown up. In general terms, our company manufactures and modifies molds mainly the cosmetic/ fairing parts, overall plastic and metal parts for automotive, White household items and small electrical appliances sectors, with the dimension range varying between 500mmx500mm to 2000mmx1200mm (1 ton - 14 tons). Our company policy is to offer reasonable prices from design to manufacture. Our company's priority is quality, customer satisfaction and esthetics in production through trained and qualified staff. We offer products to leading corporations from all over the world and Turkey. We give professional services at our facilities and manufacture molds by using state of the art machinery, production line and assembly line.

UNSER SERVICE  
OUR SERVICES



**CAD / CAM DESIGN**

**CNC MACHINING**

**MILLING**

**MOLD ASSEMBLY**

**POLISHING**

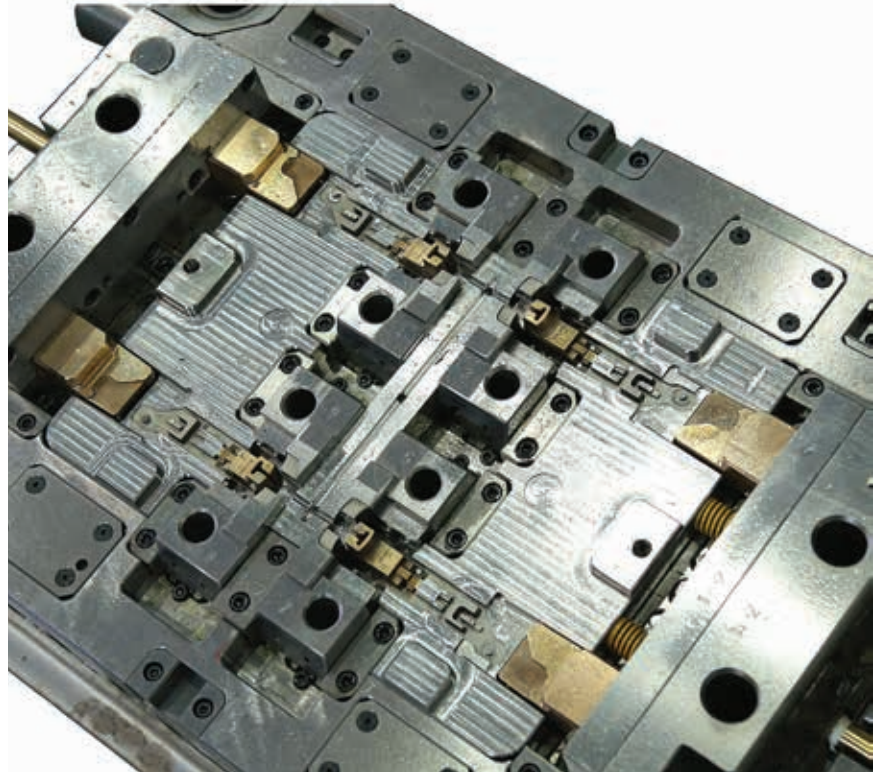
**MEASUREMENT CONTROL**

**MOLD TRIAL**

**PLASTIC PRODUCTION**

**MOUNTING LINE**

**PRIVATE MOLD PRODUCTION**



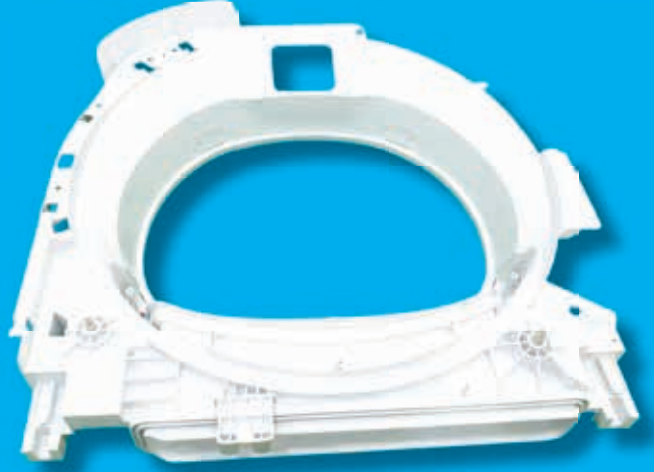
# Beyaz Eşya White Goods



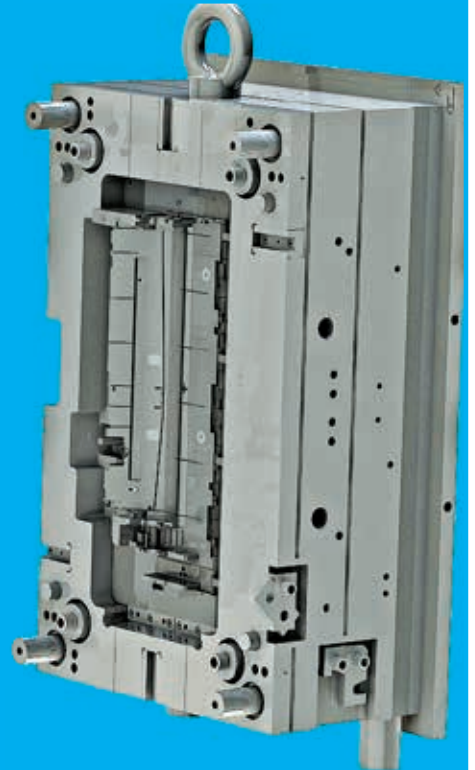
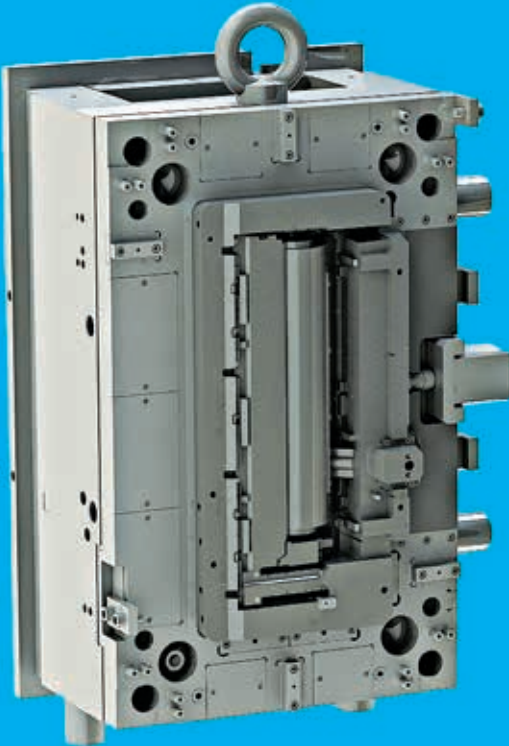
**DETAY**<sup>®</sup>  
MOLO

# White Goods MOLD PRODUCTS

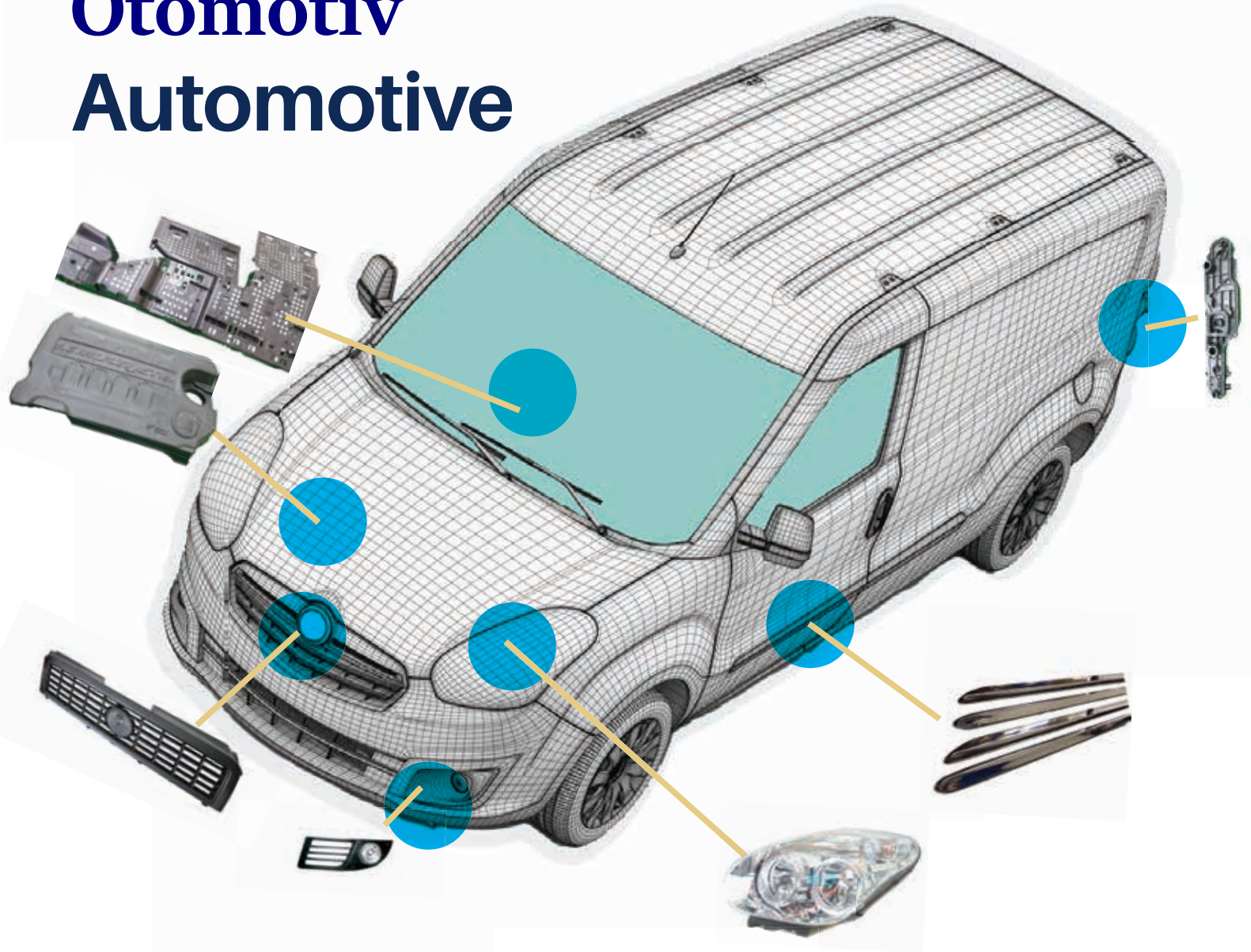
Firmamız uzun yıllardır birçok kompleks yapılı kalıp imalatı yapmıştır. Beyaz eşya sektöründe kalıp ve parçaların kaliteli olarak üretilmesi konusunda da deneyimli kadromuzla hizmet vermekteyiz.

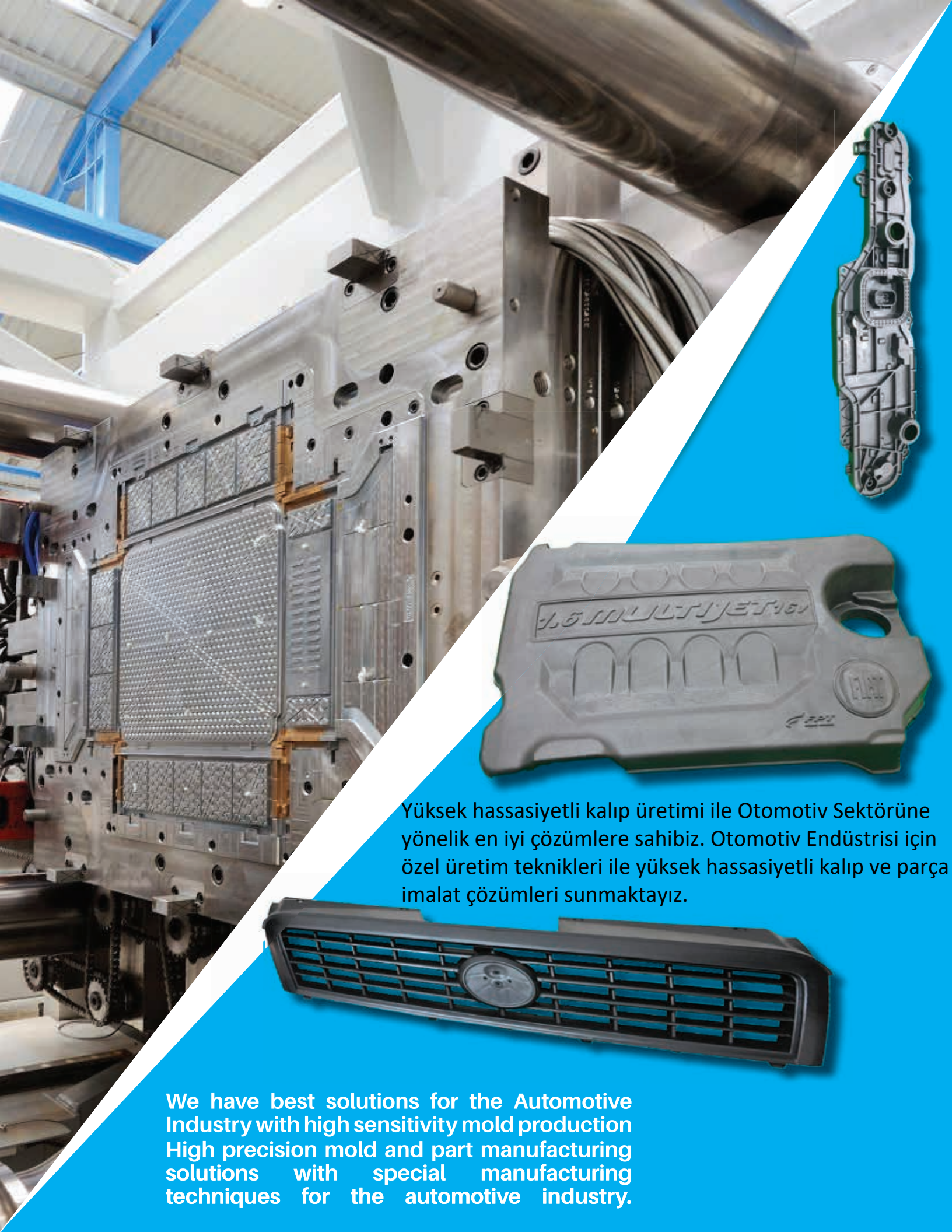


We have built many creations and manufacturing of Complicated molds since many years, we have very good experience to produce molds and manufacturing different kinds of parts with a high level quality in the white goods sector.



# Otomotiv Automotive





Yüksek hassasiyetli kalıp üretimi ile Otomotiv Sektörüne yönelik en iyi çözümlere sahibiz. Otomotiv Endüstrisi için özel üretim teknikleri ile yüksek hassasiyetli kalıp ve parça imalat çözümleri sunmaktayız.

We have best solutions for the Automotive Industry with high sensitivity mold production High precision mold and part manufacturing solutions with special manufacturing techniques for the automotive industry.

# Küçük Ev Aletleri Small Home Appliances





**FOR HIGHER PRODUCTIVITY**

# Machine Park

## Makina Parkumuz

*DetayMold latest technology products, good quality, achieved through precise and accurate production processes.*

MAKİNAADI	MENŞEİ	MARKA	YIL	X,Y,Z
Cnc Vertical Mavchining	Taiwan	HARTFORDMVP 1000	2015	1150X600X560
Cnc Vertical Mavchining	Taiwan	HARTFORD VMC 1600	2015	1700X800X750
Double Column Cnc Vertical	Taiwan	HARTFORDVMC 2200	2016	2200X1400X950
Lathe	Taiwan	SHANG YANG	2017	1,5 Meter
Milling	Taiwan	FIRST	2014	4 Number
Milling	Taiwan	JETCO	2015	5 Number
EDM Machine	Taiwan	EXCELENT PNC 540	2015	1370X720X450
EDM Machine	Taiwan	EXCELENT CNC 850	2015	1650X1000X600
Radial Drill	Taiwan	WDM	2013	ZQ3040X10/1
Surface Grinding	Taiwan	JOINT	2016	300X600
Crane	Germany		2015	15 & 10 Ton
Plastic Injection Machine	Taiwan	TSP	2020	1080 Ton
Plastic Injection Machine	Taiwan	TSP	2019	700 Ton
Plastic Injection Machine	Taiwan	TSP	2020	450 Ton
Plastic Injection Machine	Taiwan	TSP	2020	500 Ton
Plastic Injection Machine	Taiwan	TSP	2020	500 Ton
Plastic Injection Machine	Taiwan	TSP	2020	320 Ton
Plastic Injection Machine	Taiwan	TSP	2019	220 Ton
Plastic Injection Machine	Taiwan	TSP	2020	170 Ton
Chiller	Turkiye	I-TECH	2019	100.000Kcal
Chiller	Turkiye	I-TECH	2020	400.000Kcal
Crusher	Taiwan	TSP	2019	60's



# We manufacture for the world we manufacture in Turkey.

As “Detay Mold” we continue with our working and operations at around the world and in Turkey.



GERMANY  
ROMANIA  
FRANCE  
RUSSIA  
POLAND  
AFRICA  
MIDDLE EAST



CERKEZKOY  
BURSA  
BOLU  
MANISA  
ADAPAZARI



ADANA  
ANKARA  
GAZIANTEP  
ESKISEHIR  
KOCAELI

SOCem **ed** S.A.  
mold  
engineering  
solutions

**DETAY**  
MOLD

A Partnership for Success

# Customers **Kundschaft**



# HIGH PRECISION MOLDS STACK MOLDS 2K MOLDS PROTOTYPE MOLDS OVERMOULDING



## FABRIC

Yeşilbayır Mahallesi  
29 Mayıs Caddesi No:27/1  
Arnavutkoy / İstanbul / Türkiye

Phone : +90 212 671 90 10  
Fax : +90 212 671 90 11

info@detaymold.com  
sales@detaymold.com

## SOCM,Luis Febra /Portugal

M +351 918 530 752  
luis.febr@socem.pt  
Rua do Brejo,6  
2445-719 Martingança / Portugal  
socem@socem.pt  
www.socem.pt